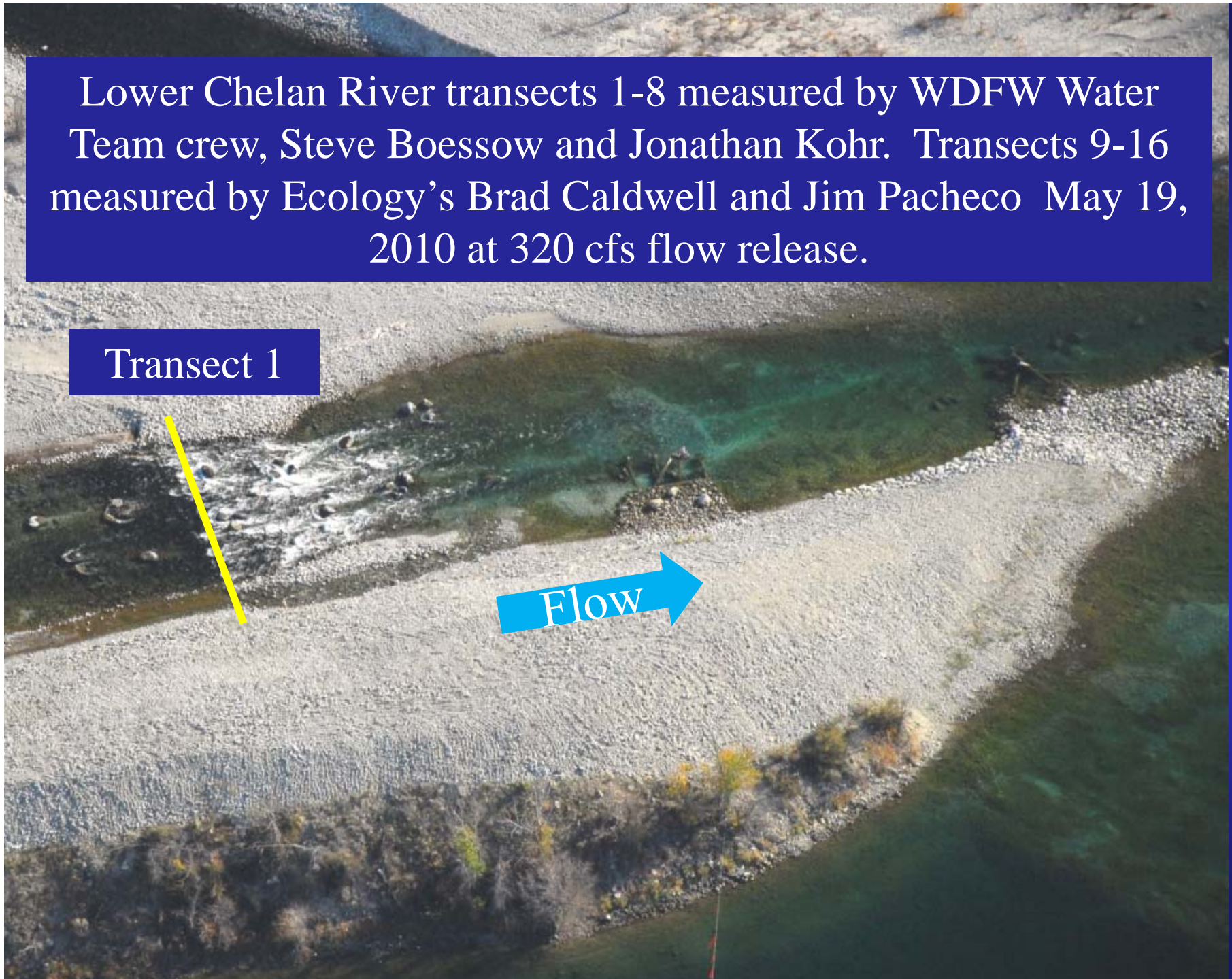


Lower Chelan River transects 1-8 measured by WDFW Water Team crew, Steve Boessow and Jonathan Kohr. Transects 9-16 measured by Ecology's Brad Caldwell and Jim Pacheco May 19, 2010 at 320 cfs flow release.

Transect 1

Flow





Transect 4

Transect 1

Transect 2

Transect 3

Flow



Transect 5

Transect 6

Transect 7

Transect 4

Flow

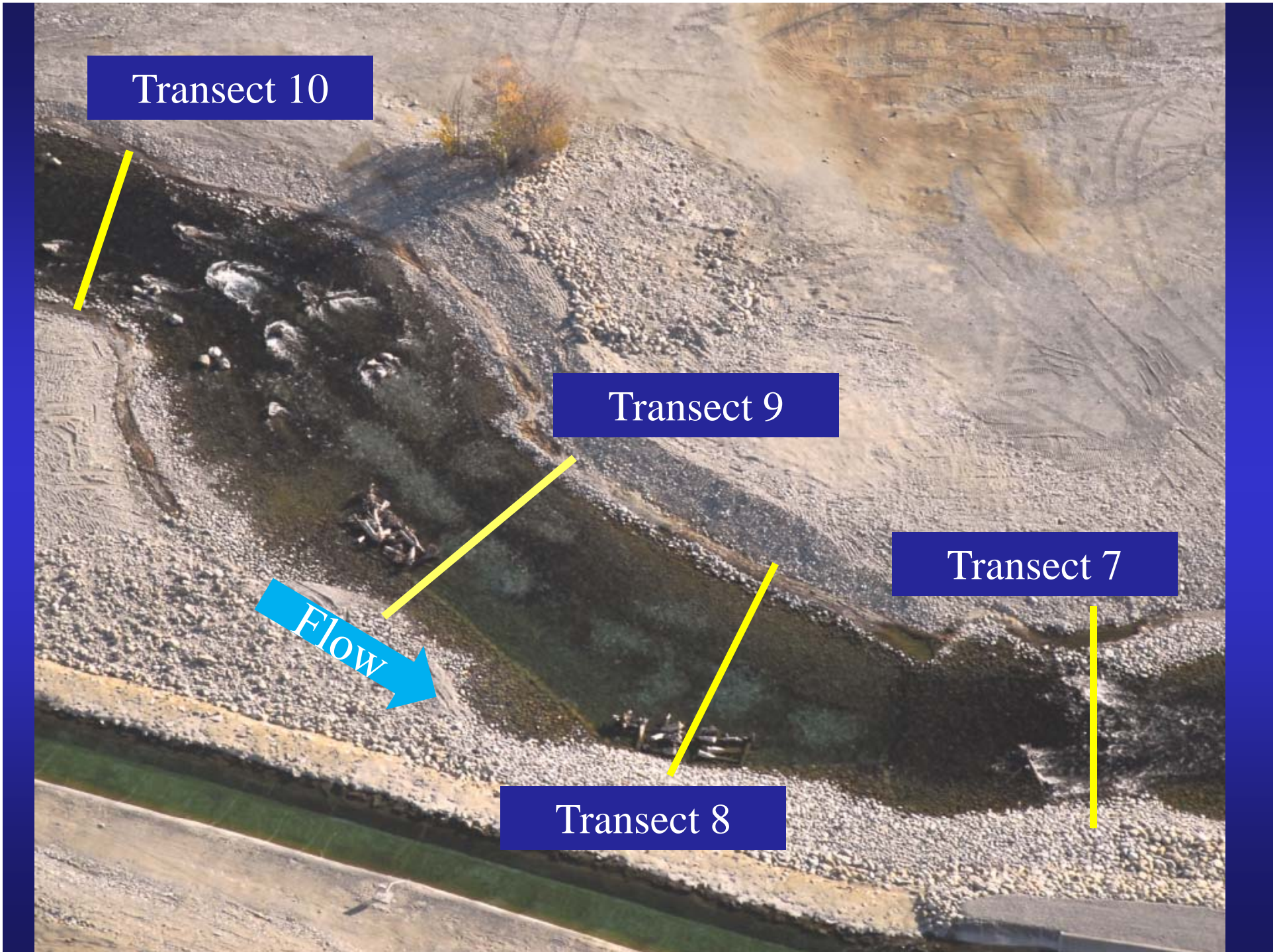
Transect 10

Transect 9

Transect 7

Flow

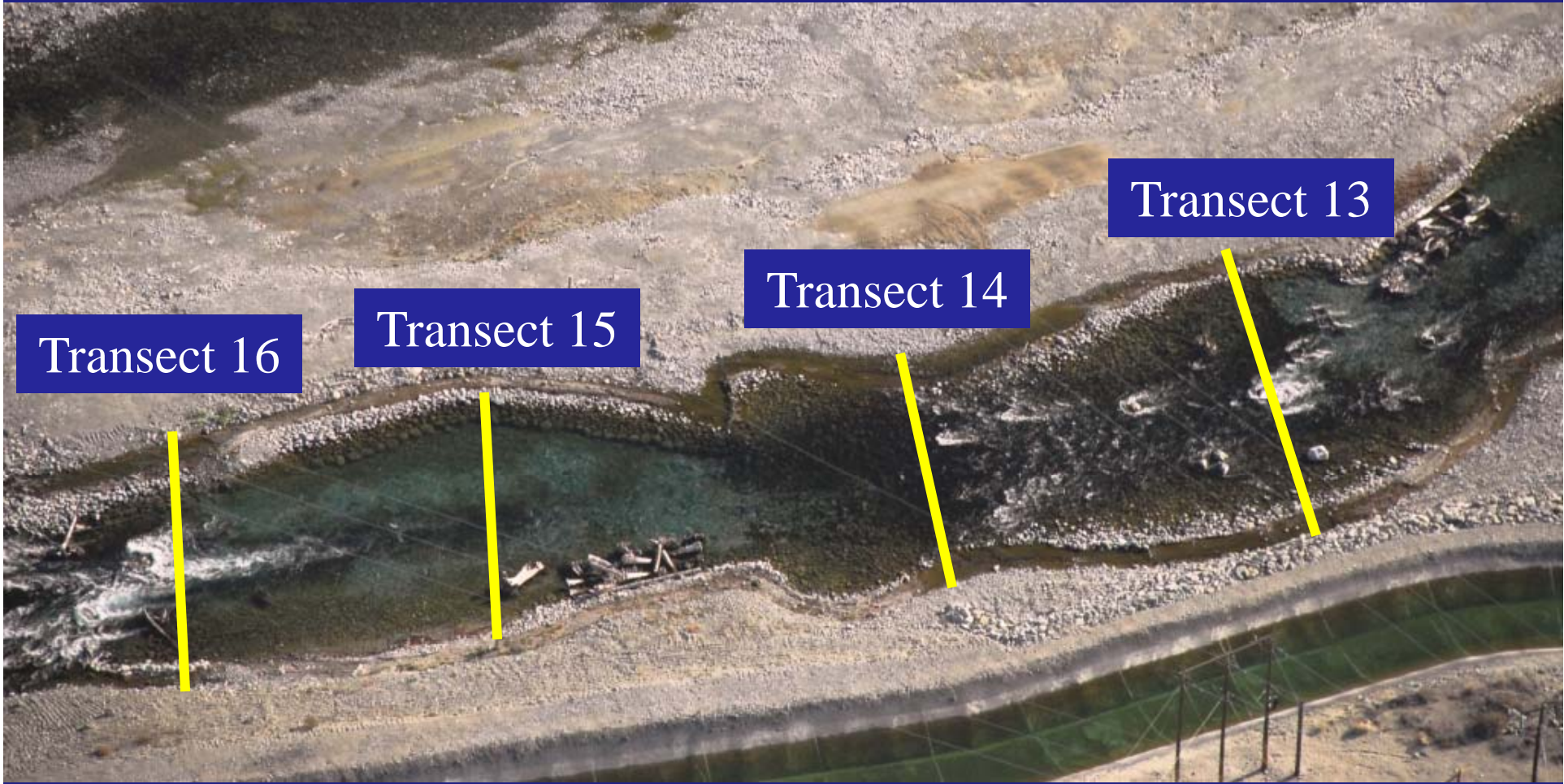
Transect 8



Transect 11

Transect 10

Transect 12

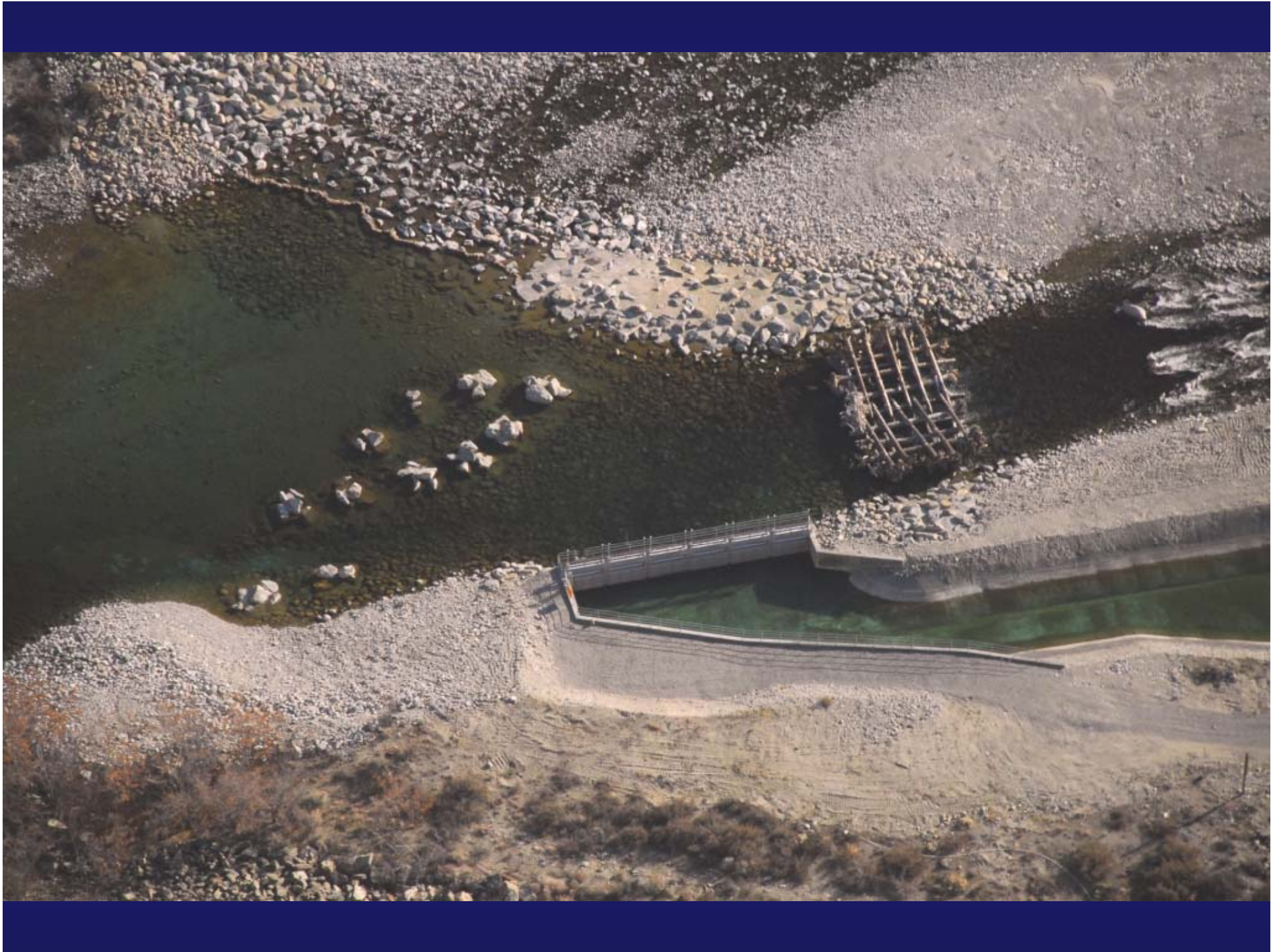


Transect 13

Transect 14

Transect 15

Transect 16



Transect widths

- T1 – 92.6'
- T2 – 79.6'
- T3 – 87.5'
- T4 – 68.7
- T5 – 88.4
- T6 – 68.1
- T7 – 86'
- T8 – 76'

Transect widths

- T9 – 96'
- T10 – 79'
- T11 – 85'
- T12 – 62'
- T13 – 99'
- T14 – 64'
- T15 – 84'
- T16 – 72'



Steve Hays sampling DNA from lower Chelan River canyon reach resident rainbow trout.