

- Water Standards -

Standard Number: **W112**

**CHELAN COUNTY
PUBLIC UTILITY DISTRICT**
Owned By The People We Serve



PRESSURE REDUCING VAULT

Originator: **RCS**

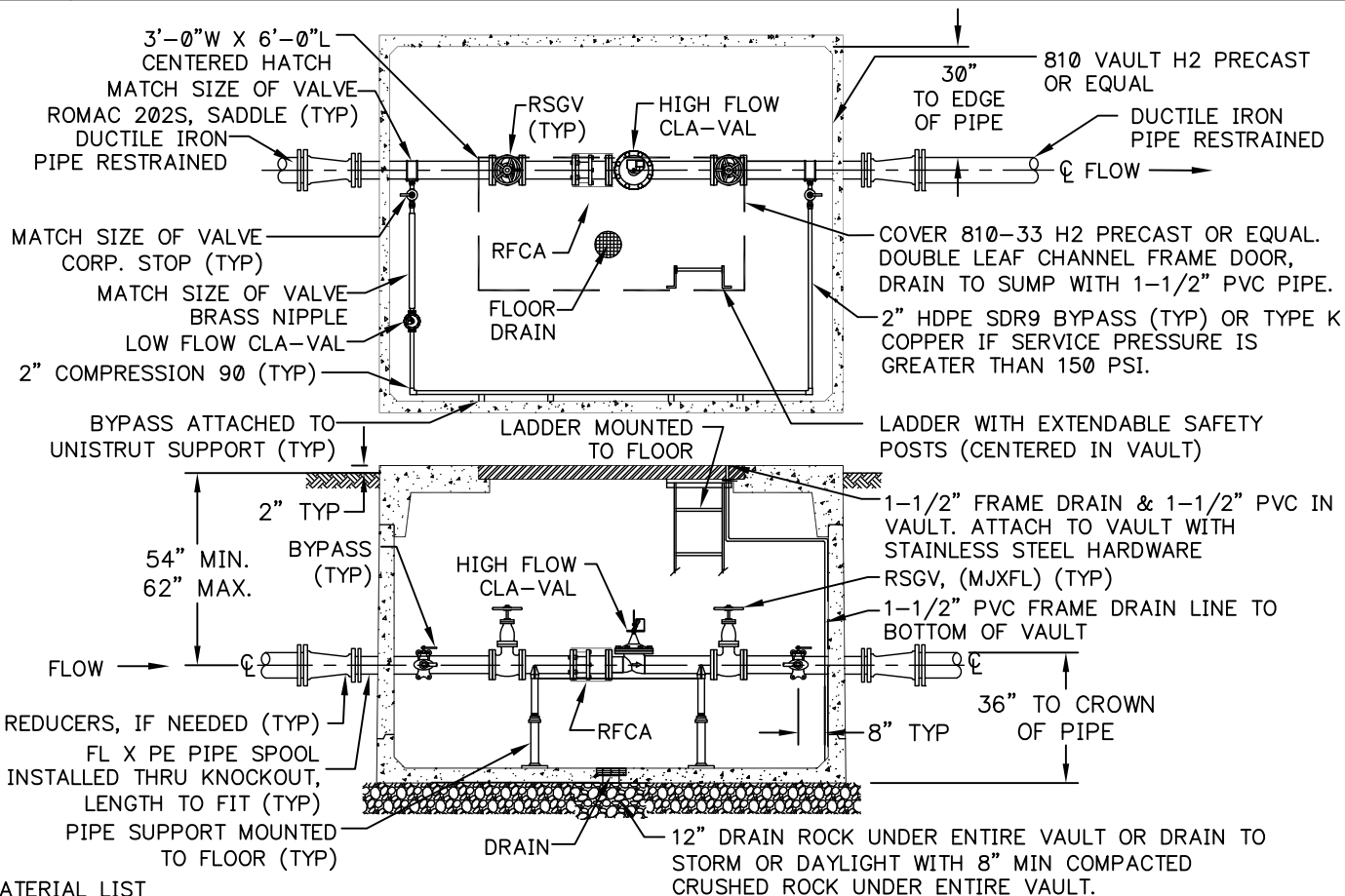
Standards Approval:
Ron Slabaugh

Date: **3/12/2019**

Page 1 of 1

Rev #: Revision Description:

4 2019 UPDATES



MATERIAL LIST

- (FT) DUCTILE IRON PIPE, CLASS 53, DIAMETER AS DETERMINED BY DISTRICT.
- (1) 810 VAULT WITH DOUBLE LEAF SPRING ASSISTED DIAMOND PLATE LOCKING COVER ALUMINUM.
- (1) 1-1/2" PVC FRAME DRAIN TO BOTTOM OF VAULT.
- (1) ALUMINUM SAFETY LADDER WITH EXTENDABLE SAFETY POSTS MIN. 1-INCH DIAMETER RUNG WITH MIN. 12-INCH WIDTH BETWEEN RUNGS AND 18-INCH WIDTH BETWEEN SIDE BARS.
- (2) 2" SERVICE SADDLES, ROMAC 202S.
- (2) 2" CORPORATION STOPS—BRASS MIP X COMP, FORD FB100-6-Q, OR EQUAL.
- (2) 2" 90—BRASS COMP X COMP, FORD L44-77-Q OR EQUAL.
- (2) QUICK JOINT COUPLINGS FOR CONNECTION TO LOW FLOW CLA-VAL (REDUCERS MAY BE REQUIRED.)
- (FT) 2" HDPE SDR9 OR TYPE K COPPER SERVICE LINE.
- (1) PRESSURE REDUCING VALVE FOR LOW FLOW, CLA-VAL MODEL 90-01 (SIZE ACCORDING TO DISTRICT DETERMINATION FOR LOW FLOW)
- (6) 2" POLY INSERTS—CTS STAINLESS STEEL MINIMUM QUANTITY 2-3/8" LENGTH BRASS, BETTER FOR PRESSURE
- (4) 2" UNISTRUT CLAMPS (MINIMUM QUANTITY WITH TWO CLOSE TO LOW FLOW CLA-VAL) SIZE OF VALVE
- (2) RESILIENT SEAT GATE VALVES AWWA C509 WITH WHEEL OPERATORS, KENNEDY OR EQUAL, DIAMETER ACCORDING TO INSTALLED MAIN SIZE.
- (2) DUCTILE IRON PIPE SPOOL, FL X PE, LENGTH TO FIT
- (1) RFCA, ROMAC OR EQUAL, DIAMETER ACCORDING TO INSTALLED MAIN SIZE.
- (2) FLANGE REDUCERS (SIZE FROM MAIN DIAMETER TO DIAMETER OF HIGH FLOW CLA-VAL) NO REDUCERS IN VAULT.
- (1) PRESSURE REDUCING/PRESSURE SUSTAINING VALVE FOR HIGH FLOW, FLANGE ENDS, CLA-VAL 92 SERIES, EPOXY LINED, STAINLESS STEEL TRIM (SIZE AND FEATURES ACCORDING TO DISTRICT DETERMINATION FOR HIGH FLOW)
- (2) PIPE SUPPORTS MOUNTED TO FLOOR W/ STAINLESS STEEL HILTI ANCHOR BOLTS, SADDLE SIZE ACCORDING TO PIPE DIAMETER.
- (1) CUBIC YARD MINIMUM 1-1/2" DRAIN ROCK (REQUIRED WHEN DRAIN TO SUBGRADE).
- (1) CUBIC YARD MINIMUM 5/8" MINUS CRUSHED ROCK.