

- Water Standards -

Standard Number: **W107**

**CHELAN COUNTY
PUBLIC UTILITY DISTRICT**
Owned By The People We Serve



3" SINGLE WATER SERVICE

Originator: **RCS**

Standards Approval:
Ron Slabaugh

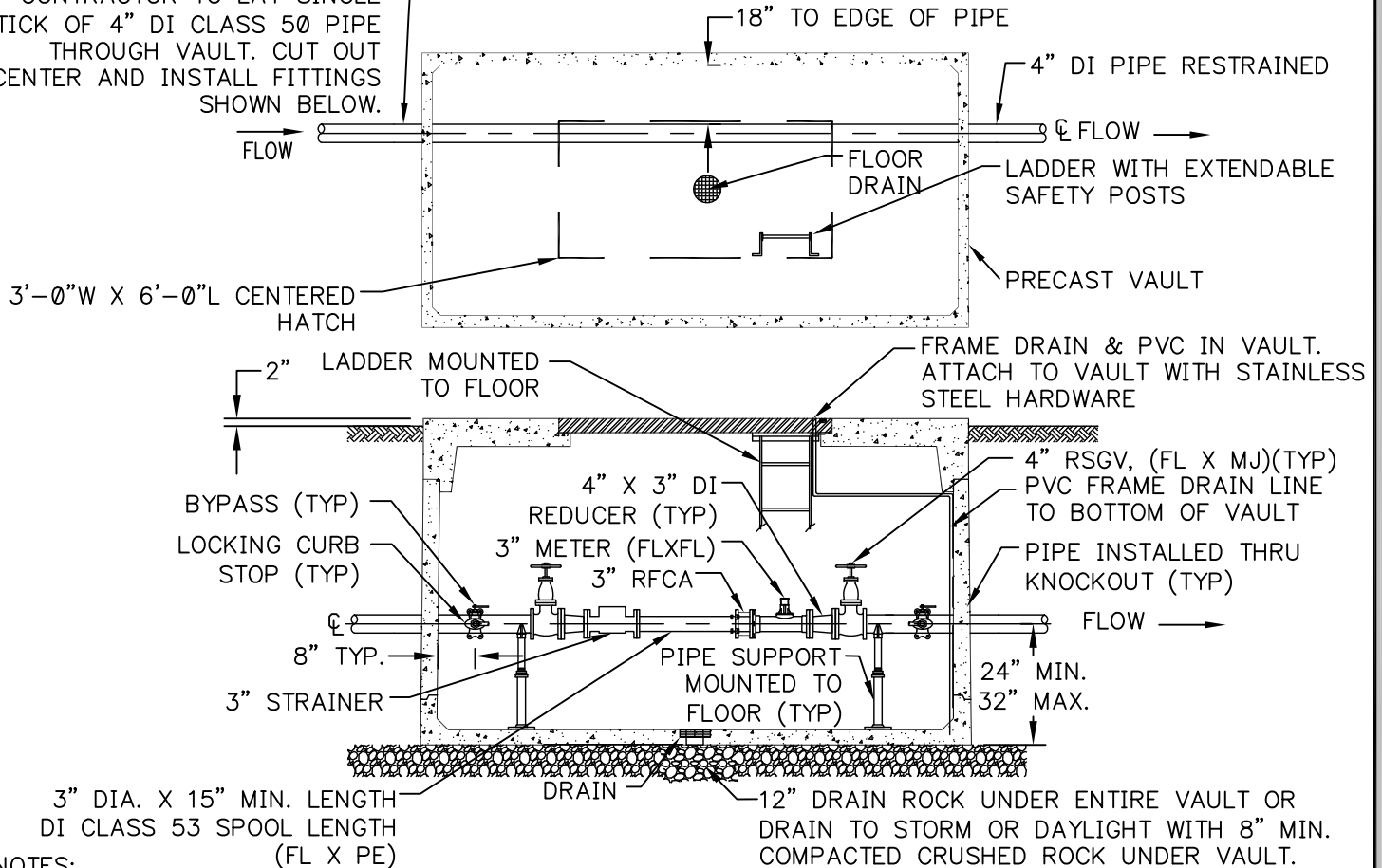
Date: **3/12/2019**

Page 1 of 1

Rev #: Revision Description:

5 2019 UPDATES

CONTRACTOR TO LAY SINGLE STICK OF 4" DI CLASS 50 PIPE THROUGH VAULT. CUT OUT CENTER AND INSTALL FITTINGS SHOWN BELOW.



NOTES:

1. THE DISTRICT WILL PROVIDE THE 3" WATER METER WITH STRAINER. CONTRACTOR TO PROVIDE ALL OTHER MATERIALS. MATERIAL COSTS BORNE BY THE CUSTOMER.

MATERIALS LIST

- (FT) 4" DUCTILE IRON FLANGED PIPE, CLASS 53, DIAMETER ACCORDING TO INSTALLED METER SIZE.
- (1) 612 H2 PRECAST VAULT WITH ALUMINUM, H-20 LOADING, DOUBLE LEAF, SPRING ASSISTED, DIAMOND PLATE, AND RECESSED PADLOCK HASP COVER, OR EQUAL
- (1) 1-1/2" PVC FRAME DRAIN TO BOTTOM OF VAULT.
- (1) ALUMINUM SAFETY LADDER WITH EXTENDABLE SAFETY POSTS MINIMUM 1 INCH DIAMETER RUNG WITH MINIMUM 12-INCH WIDTH BETWEEN RUNGS AND 18-INCH WIDTH BETWEEN SIDE BARS.
- (2) 2" SERVICE SADDLES, ROMAC 202S.
- (2) 2" LOCKING CURB STOPS-BRASS MIP X COMP, FORD B84-666-Q-W, OR EQUAL.
- (2) 2" 90-BRASS COMP X COMP, FORD L44-77-Q OR EQUAL.
- (FT) 2" HDPE SDR9 ASTM D2737 SERVICE LINE.
- (6) 2" POLY INSERTS-CTS STAINLESS STEEL MINIMUM 2-3/8" LENGTH.
- (2) 2" UNISTRUT CLAMPS (MINIMUM).
- (2) 4" RESILIENT SEAT GATE VALVES AWWA C509 WITH WHEEL OPERATORS, KENNEDY OR EQUAL.
- (1) 4" RESTRAINED FLANGE COUPLING ADAPTOR, ROMAC OR EQUAL.
- (2) 4" X 3" REDUCER (FL)
- (2) PIPE SUPPORTS MOUNTED TO FLOOR WITH STAINLESS STEEL HILTI ANCHOR BOLTS, 4" SADDLE SIZE.
- (1) CUBIC YARD MINIMUM 1-1/2" DRAIN ROCK (REQUIRED WHEN DRAIN TO SUBGRADE).
- (1) CUBIC YARD MINIMUM 5/8" MINUS CRUSHED ROCK.