

Plain & Lake Wenatchee Reliability Improvement Project - Alternative 1 Proposal

This phase of the proposed project is to build a new transmission line segment from Plain Substation to Lake Wenatchee Substation.

This phase of the proposed project is to reroute the transmission line starting from where it crosses the Chumstick Hwy, then proceeding up the Chumstick and over to Plain Substation.

This phase of the proposed project is to rebuild the existing transmission line in the same alignment from Anderson Canyon Switchyard to Sunitsch Canyon (where the transmission line crosses Chumstick Hwy.)

Proposed decommissioned 115 kV transmission line segments after project completion

LEGEND

- ▲ Substations and Switchyards
- ● ● New Transmission (Plain to Lake Wenatchee)
- ● ● New Transmission (Sunitsch Cyn to Plain)
- Potential New Transmission Route
- ○ ○ To Be Decommissioned
- ● ● Rebuild (Anderson Cyn to Sunitsch Cyn)
- Existing Transmission Lines
- Existing Distribution Lines



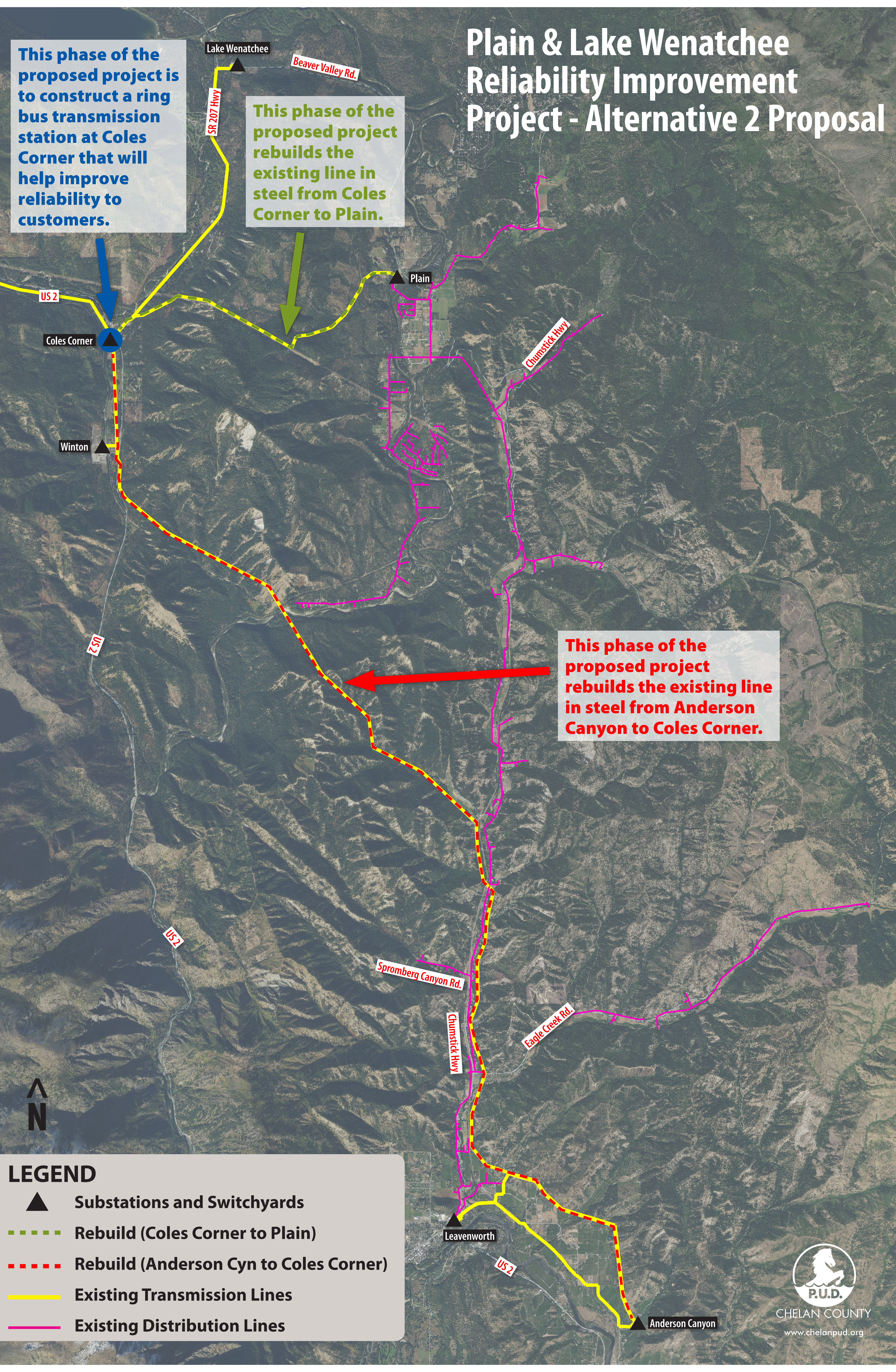
CHELAN COUNTY
www.chelanpud.org

Plain & Lake Wenatchee Reliability Improvement Project - Alternative 2 Proposal

This phase of the proposed project is to construct a ring bus transmission station at Coles Corner that will help improve reliability to customers.

This phase of the proposed project rebuilds the existing line in steel from Coles Corner to Plain.

This phase of the proposed project rebuilds the existing line in steel from Anderson Canyon to Coles Corner.



LEGEND

- ▲ Substations and Switchyards
- Rebuild (Coles Corner to Plain)
- - - Rebuild (Anderson Cyn to Coles Corner)
- Existing Transmission Lines
- Existing Distribution Lines