



CHELAN COUNTY PUD

Stormwater Management Program (SWMP) Plan

For Eastern Washington NPDES Phase II Secondary Permittee



CHELAN COUNTY

Chelan County PUD
327 N. Wenatchee Ave
Wenatchee, WA 98801



Chelan PUD
FINAL Stormwater Management Program (SWMP) Plan
SWMP Plan for the Eastern Washington Secondary Permittee
PERMIT COVERAGE NO. WAR04-6208

Updated February 2018

THIS PAGE IS INTENTIONALLY LEFT BLANK.

PREFACE

This document was originally prepared by PACE Engineers, Inc. in March 2015 to meet the requirements of the Eastern Washington NPDES Phase II Secondary Permit with the collaborative efforts and input from the following Chelan PUD staff:

- Jennifer Burns, Environmental/Cultural Program Manager
- Greg Jones, Facilities Manager
- Ray Heit, Park Superintendent
- Tim Randall, Surveyor

THIS PAGE IS INTENTIONALLY LEFT BLANK.

TABLE OF CONTENTS

SECTION 1: BACKGROUND

1.1	Introduction.....	1
1.2	Stormwater Management Program Components.....	2
1.3	Summary of Stormwater Program Definition Process	3

SECTION 2: CHELAN PUD'S NPDES PHASE II PERMIT STORMWATER MANAGEMENT PROGRAM

2.1	Public Education and Outreach (S6.D.1)	4
2.2	Public Involvement and Participation (S6.D.2)	4
2.3	Illicit Discharge Detection and Elimination (IDDE) (S6.D.3)	5
2.4	Construction Site Stormwater Runoff Control (S6.D.4)	7
2.5	Post-Construction Stormwater Management for New Development and Redevelopment (S6.D.5)	8
2.6	Pollution Prevention and Good Housekeeping for Municipal Operations (S6.D.6)	9
2.7	Total Maximum Daily Loads (TMDLs).....	10

Figures 1 through 7:

- Figure 1. Overview of all facilities
- Figure 2. Wenatchee Headquarters Property. The property is located at 327 N. Wenatchee Ave.
- Figures 3a, 3b, and 3b Riverfront Park. Properties extend along Riverfront Drive from Pybus Market to 5th Street.
- Figures 4a and 4b. Walla Walla Point Park. Properties extend from along Walla Walla Street from 9th Street to the Town Toyota Center.
- Figures 5a to 5b. Wenatchee Confluence State Park. Properties are located on the north and south sides of the Wenatchee River at the Confluence with the Columbia River. (Figure 4) The Park entrance is located at 333 Old Station Road.
- Figure 6. Horan Road Pump House and Storage Building Site. The property is location on the north side of the Wenatchee River at 2310 Horan Road.
- Figure 7. Hawley Street Facility (Figure 6) located at 1150 Hawley St.

Appendix A: Notification of Coverage under the Eastern Washington Phase II Municipal Stormwater General Permit No. WAR04-6208.

THIS PAGE IS INTENTIONALLY LEFT BLANK.

ABBREVIATIONS AND ACRONYMS

AKART – All Known, Available, and Reasonable methods of prevention, control and Treatment
BMPs – Best Management Practices
Ecology – Washington State Department of Ecology
EPA – Federal Environmental Protection Agency
CESCL – Certified Erosion and Sediment Control Lead
CWA – Clean Water Act
GIS – Geographic Information System
IDDE – Illicit Discharge Detection and Elimination
MS4 – Municipal Separate Storm Sewer System
NPDES – National Pollution Discharge Elimination System
O&M – Operation and Maintenance
Permit – NPDES Phase II Permit for Eastern Washington
PUD – Chelan County Public Utility District
SWMP – Stormwater Management Program
TMDL – Total Maximum Daily Load
WMC – Wenatchee Municipal Code

REFERENCES

- Stormwater Management Program Self-Assessment Questionnaire (*January 2015*)
- Department of Ecology's Eastern Washington Phase II Municipal Stormwater General Permit
<http://www.ecy.wa.gov/programs/wq/stormwater/municipal/phaseiiEwa/5YR/EWAPhaseIIPermit2014.pdf> <accessed February 3, 2015>
- Department of Ecology's Construction Stormwater General Permit:
<http://www.ecy.wa.gov/programs/wq/stormwater/construction/> <accessed February 3, 2015>
- Email correspondence with Chelan PUD Staff, <January and February 2015>
- Wenatchee Municipal Code: <http://www.codepublishing.com/WA/wenatchee.html> <accessed February 3, 2015>

THIS PAGE IS INTENTIONALLY LEFT BLANK.

SECTION 1: BACKGROUND

1.1 INTRODUCTION

The 1972 amendments to the Federal Water Pollution Control Act, also known as the Clean Water Act (CWA), provide the regulatory and legal basis for the National Pollution Discharge Elimination System (NPDES) Permit program and implement other regulatory and non-regulatory tools to protect the quality of waters within the United States. The major CWA requirements related to stormwater management are NPDES Permits, stormwater permitting, the 303(d) listings of the Columbia River, and the Army Corps of Engineers Section 404 permits for capital projects.

The Federal Environmental Protection Agency (EPA) NPDES Permit provides the basic structure for regulating the discharge of pollutants from point sources to waters of the United States. The CWA allows the EPA to delegate the NPDES Permit Program to the Washington State government through the Department of Ecology (Ecology) to conduct permitting, administrative, and enforcement aspects of the NPDES Permit Program.

As authorized by the Clean Water Act, the NPDES permit program controls water pollution by regulating point sources that discharge pollutants into waters of the United States. In 1990, the U.S. Environmental Protection Agency (EPA) developed Phase I of the NPDES Stormwater Program, which requires a stormwater permit for medium and large municipal separate storm sewer systems (MS4s)¹ located in incorporated places or counties with populations of 100,000 or more, and for construction activity that disturbs 5 or more acres of land. Phase II of the NPDES Stormwater Program, which was introduced in 1999, requires a permit for stormwater discharges from certain regulated small MS4s and for construction activity that disturbs between 1 and 5 acres of land. For both Phase I and Phase II jurisdictions, the EPA rules require operators of MS4s to develop and implement a stormwater management program that:

- Reduces the discharge of pollutants to the “maximum extent practicable.”
- Protects water quality.

The NPDES Phase II Permit applies to cities and counties with a population of less than 100,000 or located within a federally designed urbanized area that operates an MS4. The City of Wenatchee has therefore been designated an NPDES Phase II Permittee. Public Utility District No. 1 of Chelan County (Chelan PUD) is a Secondary Permittee to the City of Wenatchee. Chelan PUD is required to comply with specific rules, regulations, and ordinances of the City of Wenatchee, for those properties located within the City limits and the City’s Urban Growth Area, all of which are described in this document and in Figures 1 through 7. The City of Wenatchee has been regulated under the Phase II NPDES permit since January 17, 2007.

The official issuance date of the Permit by Ecology to the Chelan PUD was January 1, 2015. See Appendix A for a copy of the *Notification of Coverage under the Eastern Washington Phase II Municipal Stormwater General Permit No. WAR04-6208*.

¹ An MS4 is any system that collects, conveys and discharges stormwater.

A stormwater management program involves planning, public education and involvement, illicit discharge detection and maintenance programs, and passing appropriate ordinances to reduce stormwater pollution. The Washington State Department of Ecology (Ecology) first issued a Phase II NPDES permit for Eastern Washington in 2007, modified it in 2009, and reissued it unmodified on August 1, 2012. At legislative direction, it became effective through July 31, 2014. Ecology also reissued an updated permit for 2014-2019 on August 1, 2012, to become effective on August 1, 2014. On January 1, 2015, the Chelan PUD petitioned Ecology via a Notice of Intent to come under the requirements of the Secondary Permit of the Eastern Washington NPDES Phase II Permit.²

The geographic extent of the Chelan PUD coverage area includes the following properties and can be viewed in Figures 1 through 7.

- Figure 1. Overview of all facilities
- Figure 2. Wenatchee Headquarters Property. The property is located at 327 N. Wenatchee Ave.
- Figures 3a, 3b, and 3c. Riverfront Park. Properties extend along Riverfront Drive from Pybus Market to 5th Street.
- Figures 4a and 4b. Walla Walla Point Park. Properties extend from along Walla Walla Street from 9th Street to the Town Toyota Center.
- Figures 5a to 5b. Wenatchee Confluence State Park. Properties are located on the north and south sides of the Wenatchee River at the Confluence with the Columbia River. (Figure 4) The Park entrance is located at 333 Old Station Road.
- Figure 6. Horan Road Pump House and Storage Building Site. The property is location on the north side of the Wenatchee River at 2310 Horan Road.
- Figure 7. Hawley Street Facility (Figure 6) located at 1150 Hawley St.

The current Phase II NPDES permits can be accessed on the Ecology website at the following link (see page 30 for the start of the Secondary Permittee requirements):

<http://www.ecy.wa.gov/programs/wq/stormwater/municipal/phaseiiEwa/ewph2permit.html>.

1.2 STORMWATER MANAGEMENT PROGRAM COMPONENTS

The Secondary Permit of the NPDES Phase II Permit is written with six major stormwater program elements. Chelan PUD's Stormwater Management Program (SWMP) is the mechanism for implementation and enforcement of these elements. The six major stormwater program elements are:

1. Public Education and Outreach

² Department of Ecology's Eastern Washington Phase II Municipal Permit Stormwater Permit (See pages 30 through 38).

<http://www.ecy.wa.gov/programs/wq/stormwater/municipal/phaseiiEwa/5YR/EWAPhaseIIPermit2014.pdf>

2. Public Participation and Involvement
3. Illicit Discharge Detection and Elimination
4. Construction Site Stormwater Runoff Control
5. Post-Construction Stormwater Management for New Development and Redevelopment
6. Pollution Prevention and Good Housekeeping for Municipal Operations

The purpose of the SWMP is to reduce the total discharge of pollutants into the local receiving waters, improve water quality, and satisfy the state requirement to apply “All Known, Available, and Reasonable methods of prevention, control, and Treatment” (AKART).

The SWMP outlines the details of each of the six major stormwater program elements. By complying with the SWMP, the Chelan PUD fulfills the requirements of S6.D.C.2.b. This Plan provides written documentation to the Department of Ecology on how the Chelan PUD will comply with the various requirements of the Permit. The SWMP also documents the status of the PUD’s current and future activities for compliance with the Permit.

1.3 SUMMARY OF STORMWATER PROGRAM DEFINITION PROCESS

The **Chelan PUD** is required to complete a SWMP that addresses the regulatory requirements of the NPDES Phase II Secondary Permit that apply to the identified PUD facilities within the City of Wenatchee and within the urban growth boundary. In January of 2015, a workshop was conducted by PACE Engineers, Inc., with four³ **Chelan** PUD staff to discuss and organize information pertaining to required elements in the SWMP. A *Stormwater Management Program Self-Assessment Questionnaire* was used to discuss and document the PUD’s current stormwater program activities. The results of the questionnaire and workshop are documented in this SWMP. The document presents existing activities and planned future activities specific to achieving compliance with the stormwater NPDES Phase II Municipal Stormwater General Permit No. WAR04-6208.

³ PUD Staff in Attendance: Jennifer Burns, Greg Jones, Ray Heit, and Tim Randall

THIS PAGE IS INTENTIONALLY LEFT BLANK.

SECTION 2: CHELAN PUD'S NPDES PHASE II PERMIT STORMWATER MANAGEMENT PROGRAM

2.1 PUBLIC EDUCATION AND OUTREACH (S6.D.1)

Regulatory Requirements

Chelan PUD is required to implement the following stormwater public education and outreach activities:

- Label stormwater inlets owned and operated by Chelan PUD by four years after the initial date (1/1/19) of permit coverage at:
 - Maintenance Yards
 - Parking Lots
 - Sidewalks
 - Pedestrian Access Points
- *Chelan PUD is not required to implement the requirements of S.6.D.1.b regarding the distribution of public education and outreach materials because they are not a public port, college, or university.*

Status of Existing Activities

- Chelan PUD has completed labelling stormwater inlets in maintenance yards, parking lots, sidewalks, and pedestrian access points.

Future Activities

- Chelan PUD is planning to inspect and relabel stormwater inlets that have missing or damaged labels.
- *Optional Activity: Chelan PUD may also participate in the Salmon Festival for additional public education and outreach; however, this is not required by the Permit.*

2.2 PUBLIC INVOLVEMENT AND PARTICIPATION (S6.D.2)

Regulatory Requirements

Chelan PUD is required to implement the following public involvement and participation activities:

- Complete an annual report, submit to Ecology by March 31, 2016 and post on Chelan PUD's website by May 31, 2016.
- Complete all subsequent annual reports, submit to Ecology by March 31 and post on Chelan PUD's website annually by May 31.

- Make the latest updated version of the SWMP available on Chelan PUD's website annually by May 31.

Status of Existing Activities

- Chelan PUD has developed a SWMP, posted on website, and submitted an annual report to Ecology by May 31 since permit issuance in 2015.

Future Activities

- The PUD will complete all subsequent annual reports, submit to Ecology by March 31 and post on PUD's website annually by May 31.
- The PUD will make the latest updated version of the SWMP available on Chelan PUD's website by May 31.

2.3 ILLICIT DISCHARGE DETECTION AND ELIMINATION (IDDE) (S6.D.3)

Regulatory Requirements

Chelan PUD is required to develop, implement and enforce an Illicit Discharge Detection and Elimination (IDDE) program to eliminate illicit discharges for small MS4s located at regulated facilities. Chelan PUD is required to implement the following IDDE activities on all facilities with MS4s:

- From the start of the Permit, comply with all IDDE rules, regulations and ordinance of the City of Wenatchee. If the Wenatchee Municipal Code is updated during the Permit cycle, Chelan PUD will comply with the most current version of the code.
- Develop and implement IDDE policies within one year from the initial date (1/1/16) of the Permit. Develop and implement IDDE procedures and enforcement plan to ensure compliance with the City of Wenatchee's IDDE policies within 18 months (7/1/16) of the initial date of the Permit.
- Develop a map of the MS4 with all known outfalls, receiving waters, and delineation of drainage basins to each known outfall for the following properties no later than 4.5 years (7/1/19) from the initial date of the Permit.
 - Wenatchee Headquarters Property
 - Riverfront Park
 - Walla Walla Point Park
 - Wenatchee Confluence State Park
 - Hawley Street Facility

Note: The Horan Pump House and Storage Building Site is excluded from the IDDE requirements because there is no MS4 on the site.

Figures 1 through 7, following Section 2, show the locations of the properties.

- Conduct field inspection and visually inspect outfalls for illicit discharges. Visually inspect one-third of known MS4 outfalls annually, beginning no later than two years (1/1/17) from the initial date of permit coverage. Within two years of Permit coverage, implement procedures for identifying and removing any illicit discharges. Keep records of all inspections and follow-up activities.
- Develop and implement a spill response plan within 4.5 years (7/1/19) of the initial date of Permit coverage for each site listed above that has a MS4.
- Provide staff training to all staff that have a role in preventing illicit discharges. All staff shall be trained no later than two years (1/15/17) from the initial date of the Permit coverage.

Status of Existing Activities

- Chelan PUD has developed and implemented an IDDE policy and ensures compliance with the City of Wenatchee's IDDE policies.
- Chelan PUD has mapped all known outfalls, receiving waters and associated drainage basins using Geographic Information System (GIS) software at all six Permit properties previously listed. Table 1 provides a summary of stormwater facilities.

Table 1: Stormwater Facility Inventory	
Facility Type	Total
Catch Basins and Manholes	114
Storm Pipe	2.57 miles
Conveyance Ditches	0.69 miles
Drywells	2
Major Stormwater Management Facility	1
Surface discharges to the Wenatchee River	2
Surface discharges to the Columbia River	12

- Chelan PUD conducts field inspections and visually inspects outfalls for illicit discharges.
- Chelan PUD currently has a spill response plan in place for the Hawley Street Facility. Site operations staff are trained on the plan.
- Chelan PUD inspects storm drains at least one time per year and cleans them as necessary.

Chelan PUD has developed annual training for staff that have a role in preventing illicit discharges.

Future Activities

- Keep records of field inspections and respond and resolve any identified illicit discharges.
- Develop a spill response plan for five of the six sites listed previously (depending on the nature of the activities performed by the PUD on these sites, some sites may have the same spill response plan). Hawley Street Facility already has a spill response plan in place.

2.4 CONSTRUCTION SITE STORMWATER RUNOFF CONTROL (S6.D.4)

Regulatory Requirements

The Chelan PUD is required to develop, implement, and enforce a Construction Site Runoff Control Program, and to implement the following Construction Site Runoff Control activities:

- From the start of the Permit, comply with all Construction Site Runoff Control rules, regulations and ordinances of the City of Wenatchee. See the Wenatchee Municipal Code (WMC) *Chapter 12.10: Construction and Post Construction Stormwater* for additional information on the City's rules and regulations regarding Construction Site Runoff Control.⁴ If the Wenatchee Municipal Code is updated during the Permit cycle, the PUD will comply with the most current version of the code.
- Obtain coverage under the General NPDES Permit for Stormwater Discharge Associated with Construction Activities.⁵
- Coordinate with the City of Wenatchee on construction projects owned and operated by the City that discharge into the Chelan PUD's MS4.
- Provide training to relevant Chelan PUD staff on erosion and sediment control Best Management Practices (BMPs) and Construction runoff requirements of the Permit.
- Coordinate with Ecology and the City of Wenatchee to provide access for inspection of construction sites or other land disturbances during the active grading and/or construction phase of a project.
- Construction site requirements are limited to compliance with local regulation and the state general stormwater permit for construction activities with additional coordination for potential construction stormwater runoff to the PUD MS4 facilities.

Status of Existing Activities

⁴ Wenatchee Municipal Code: <http://www.codepublishing.com/WA/wenatchee.html>

⁵ Department of Ecology's *Construction Stormwater General Permit*:
<http://www.ecy.wa.gov/programs/wq/stormwater/construction/>

- Chelan PUD currently implements the requirements of the *2004 Department of Ecology's Stormwater Management Manual for Eastern Washington* for all proposed construction projects.
- Chelan PUD's Project Manager assures that construction permits are obtained by either Chelan PUD staff or the Contractor hired to complete a project. Chelan PUD takes responsibility for notifying adjacent property owners of a proposed project.
- Several Chelan PUD staff have been certified as Certified Erosion and Sediment Control Leads (CESLC).

Future Activities

- Continue to comply with all Construction Site Runoff Control rules, regulations, and ordinances of the City of Wenatchee.
- Continue to coordinate with the City of Wenatchee on construction projects owned and operated by the City that discharge into Chelan PUD's MS4.
- Provide additional training to relevant Chelan PUD staff on erosion and sediment control Best Management Practices (BMPs) and construction runoff requirements of the Permit, as needed.
- As requested, coordinate with Ecology and the City of Wenatchee to provide access for inspection of construction sites or other land disturbances during the active grading and/or construction phase of a project.

2.5 POST-CONSTRUCTION STORMWATER MANAGEMENT FOR NEW DEVELOPMENT AND REDEVELOPMENT (\$6.D.5)

Regulatory Requirements

Chelan PUD is required to develop, implement and enforce a Post-Construction Stormwater Management for Development and Redevelopment Program. Chelan PUD is required to implement the following Construction Site Runoff Control activities:

- Comply with all Post-Construction Stormwater Management rules, regulations and ordinance of the City of Wenatchee. See the Wenatchee Municipal Code (WMC) *Chapter 12.10: Construction and Post Construction Stormwater* for additional information on the City's rules and regulations regarding Post-Construction Stormwater Management for New Development and Redevelopment.⁶ If the Wenatchee Municipal Code is updated during the Permit cycle, Chelan PUD will comply with the most current version of the code.
- Coordinate with the City of Wenatchee regarding projects owned or operated by the City that discharge into Chelan PUD's MS4.

⁶ Wenatchee Municipal Code: <http://www.codepublishing.com/WA/wenatchee.html>

Status of Existing Activities

- Chelan PUD currently trains staff on ongoing maintenance needs for newly constructed facilities.

Future Activities

- Continue to comply with all Post-Construction Stormwater Management rules, regulations and ordinance of the City of Wenatchee. This may require coordination with City staff.
- Continue to Coordinate with the City of Wenatchee regarding projects owned or operated by the City that discharge into Chelan PUD's MS4. This may require coordination with City staff.

2.6 POLLUTION PREVENTION AND GOOD HOUSEKEEPING FOR MUNICIPAL OPERATIONS (S6.D.6)

Regulatory Requirements

Chelan PUD is required to develop and implement a Pollution Prevention and Good Housekeeping Program for Municipal Operations. Chelan PUD is required to implement the following Operation and Maintenance (O&M) activities:

- Develop and implement an O&M Plan to minimize stormwater pollution prevention from activities conducted by Chelan PUD. The O&M Plan should address:
 - *Stormwater collection and conveyance systems*
 - *Roads and parking lots*
 - *Vehicle fleets*
 - *External building maintenance*
 - *Parks and open space*
 - *Other facilities that could have a negative impact on stormwater runoff.*
- As needed, from the start date (1/15/15) of the Permit, all facilities should be covered by the *General NPDES Permit for Stormwater Discharges Associated with Industrial Activities* or another NPDES Permit. The Permit authorizes surface water discharges associated with the activity.
- The O&M Plan is required to include sufficient documentation and records to assure that the PUD's stormwater management program is complying with the details of the O&M Plan.
- Within three years of initial date (1/1/18) of the Permit, the PUD is required to train all employees who construct, operate, or maintain stormwater facilities as part of their major job function. The training include the following topics:
 - The importance of protecting water quality
 - The requirements of the Permit

- O&M requirements
- Inspection procedures
- Ways to perform job while minimizing impacts to water quality
- Record keeping procedures for IDDE and spills

Status of Existing Activities

- Chelan PUD has developed and implemented an Operation and Maintenance (O&M) plan that addresses:
 - Stormwater collection and conveyance systems
 - Roads and parking lots
 - Vehicle fleets
 - External building maintenance
 - Parks and open space
 - Other facilities that could have a negative impact on stormwater runoff.
- Chelan PUD has an Asset Management Plan and system that can be used for planning and coordinating major stormwater maintenance and capital needs.
- Chelan PUD has an existing preventative maintenance program that includes stormwater maintenance activities.
- Chelan PUD has developed a training program for all employees who construct, operate, or maintain stormwater facilities as part of their major job function.

Future Activities

- As needed for new facilities, require coverage under the General NPDES Permit for Stormwater Discharge Associated with Industrial Activities,
- Develop a formal procedure for maintaining documentation and records to ensure compliance with the Stormwater O&M Plan.

2.7 TOTAL MAXIMUM DAILY LOADS (TMDLS)

Regulatory Requirements⁷

- There is a temperature TMDL and a pH and DO TMDL on the Wenatchee River; however, neither of these TMDLs is listed in Appendix 2 of the Permit.

Status of Existing Activities

- Not Applicable.

⁷ Department of Ecology's Eastern Washington Phase II Municipal Stormwater Permit Appendix 2 – Total Maximum Daily Loads (TMDL)
<http://www.ecy.wa.gov/programs/wq/stormwater/municipal/phaseiiEwa/5YR/Appx2EWAPhaseII2014.pdf>

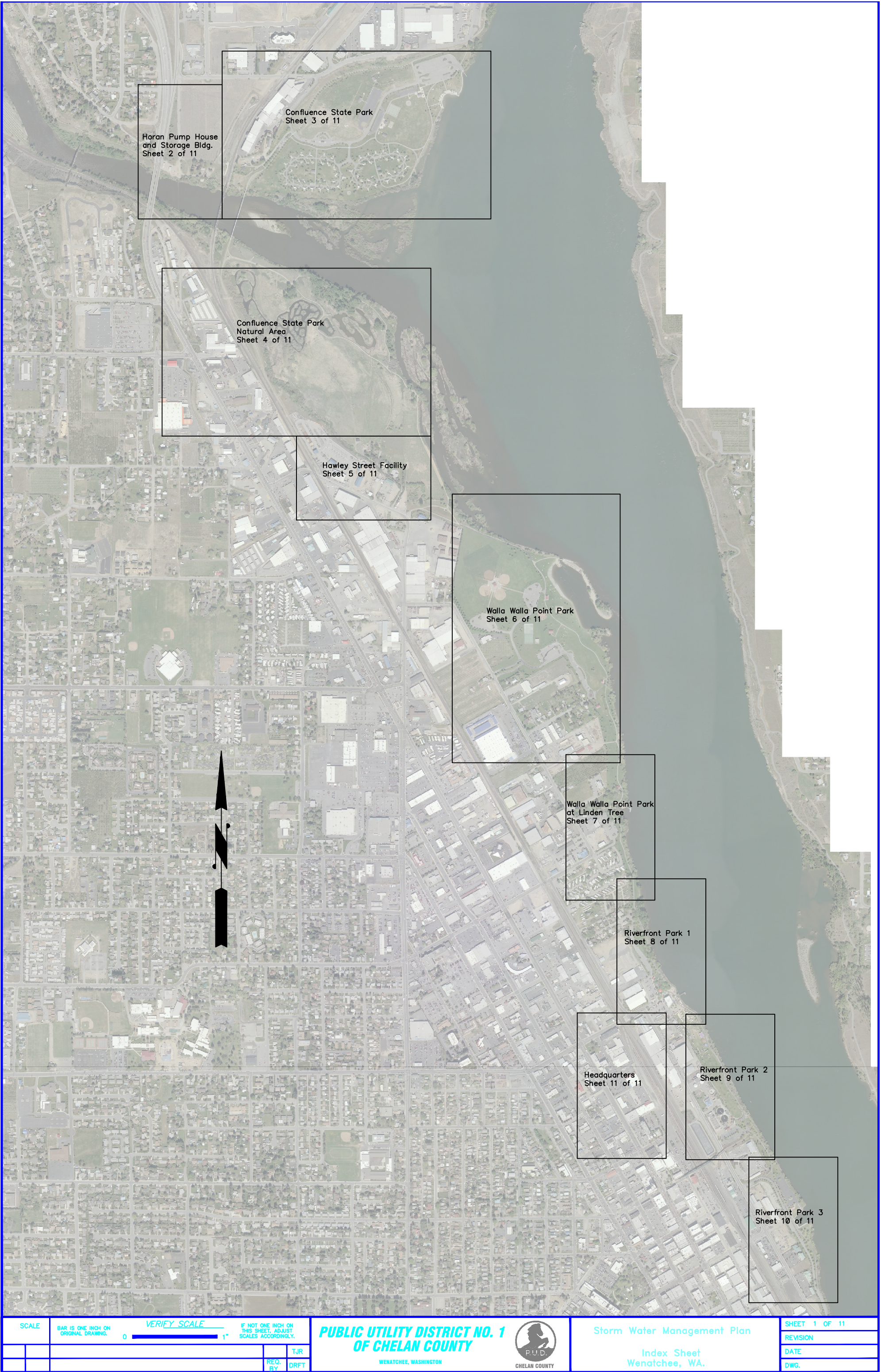
Future Activities

- Not Applicable at this time.

FIGURES

- Figure 1. Overview of all facilities
- Figure 2. Wenatchee Headquarters Property. The property is located at 327 N. Wenatchee Ave.
- Figures 3a, 3b, and 3b Riverfront Park. Properties extend along Riverfront Drive from Pybus Market to 5th Street.
- Figures 4a and 4b. Walla Walla Point Park. Properties extend from along Walla Walla Street from 9th Street to the Town Toyota Center.
- Figures 5a to 5b. Wenatchee Confluence State Park. Properties are located on the north and south sides of the Wenatchee River at the Confluence with the Columbia River. (Figure 4) The Park entrance is located at 333 Old Station Road.
- Figure 6. Horan Road Pump House and Storage Building Site. The property is location on the north side of the Wenatchee River at 2310 Horan Road.
- Figure 7. Hawley Street Facility (Figure 6) located at 1150 Hawley St.

THIS PAGE IS INTENTIONALLY LEFT BLANK.



SCALE		VERIFY SCALE		IF NOT ONE INCH ON THIS SHEET, ADJUST SCALES ACCORDINGLY.		PUBLIC UTILITY DISTRICT NO. 1 OF CHELAN COUNTY		Storm Water Management Plan		SHEET 1 OF 11	
BAR IS ONE INCH ON ORIGINAL DRAWING.		0		1"		TJR		Index Sheet Wenatchee, WA.		REVISION	
						REG. BY				DATE	
						DRFT				DWG.	

FIGURE 1. OVERVIEW SHOWING LOCATION OF ALL FACILITIES



- SCALE

BAR IS ONE INCH ON
ORIGINAL DRAWING.

VERIFY SCALE

0

IF NOT ONE INCH ON
THIS SHEET, ADJUST
SCALES ACCORDINGLY

**PUBLIC UTILITY DISTRICT NO. 1
OF CHELAN COUNTY**

WENATCHEE, WASHINGTON



STORMWATER MANAGEMENT PLAN
HEADQUARTERS
WENATCHEE, WA

SHEET 11 OF 11

REVISION

DATE _____

DWG

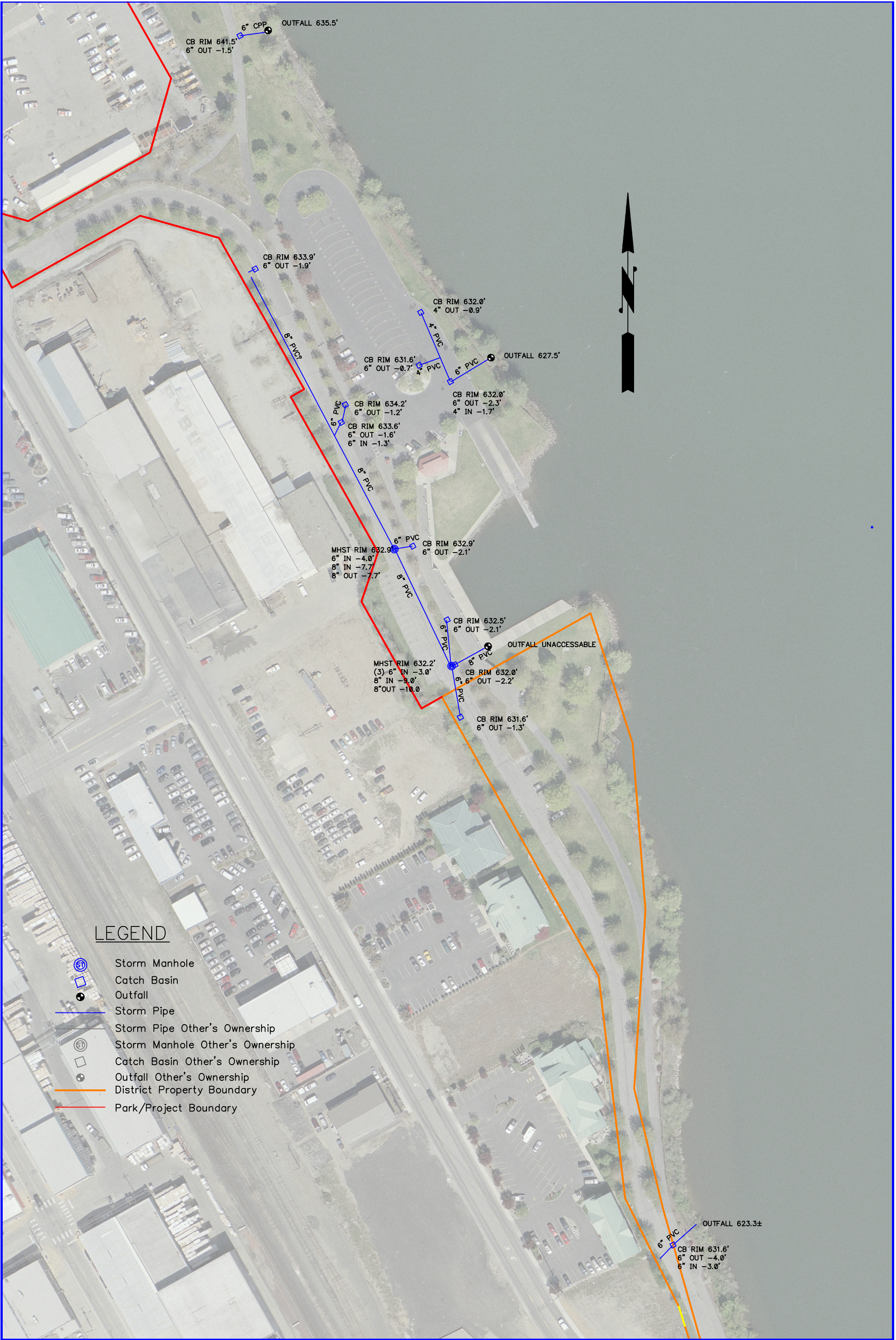


LEGEND

- Storm Manhole
- Catch Basin
- Outfall
- Storm Pipe
- Storm Pipe Other's Ownership
- Storm Manhole Other's Ownership
- Catch Basin Other's Ownership
- Outfall Other's Ownership
- District Property Boundary
- Park/Project Boundary

SCALE 3/5/15	BAR IS ONE INCH ON ORIGINAL DRAWING.	VERIFY SCALE 0 1"	IF NOT ONE INCH ON THIS SHEET, ADJUST SCALES ACCORDINGLY.	PUBLIC UTILITY DISTRICT NO. 1 OF CHELAN COUNTY WENATCHEE, WASHINGTON		Storm Water Management Plan Riverfront Park 1 Wenatchee, WA.	SHEET 8 OF 11
							REVISION
							DATE
							DWG.

FIGURE 3A. RIVERFRONT PARK - 5TH STREET ENTRANCE



LEGEND

- Storm Manhole
- Catch Basin
- Outfall
- Storm Pipe
- Storm Pipe Other's Ownership
- Storm Manhole Other's Ownership
- Catch Basin Other's Ownership
- Outfall Other's Ownership
- District Property Boundary
- Park/Project Boundary

FIGURE 3C. RIVERFRONT PARK - BOAT LAUNCH AREA AT PYBUS MARKET



SCALE 3/5/15		BAR IS ONE INCH ON ORIGINAL DRAWING.		VERIFY SCALE 0 1"		IF NOT ONE INCH ON THIS SHEET, ADJUST SCALES ACCORDINGLY.		PUBLIC UTILITY DISTRICT NO. 1 OF CHELAN COUNTY WENATCHEE, WASHINGTON				Storm Water Management Plan Walla Walla Point Park South at Linden Tree Wenatchee, WA.		SHEET 7 OF 11	
														REVISION	
														DATE	
														DWG.	

FIGURE 4A. WALLA WALLA POINT PARK - LINDEN TREE PARKING ACCESS



SCALE		VERIFY SCALE		IF NOT ONE INCH ON THIS SHEET, ADJUST SCALES ACCORDINGLY.		PUBLIC UTILITY DISTRICT NO. 1 OF CHELAN COUNTY		Storm Water Management Plan Walla Walla Point Park		SHEET 6 OF 11	
BAR IS ONE INCH ON ORIGINAL DRAWING.		0		1"		WENATCHEE, WASHINGTON		Wenatchee, WA.		REVISION	
						TJR				DATE	
						DRFT				DWG.	

FIGURE 4B. WALLA WALLA POINT PARK - BALL FIELDS AND SWIMMING AREA



LEGEND

- Storm Manhole
- Catch Basin
- Outfall
- Storm Pipe
- Storm Pipe Other's Ownership
- Storm Manhole Other's Ownership
- Catch Basin Other's Ownership
- Outfall Other's Ownership
- District Property Boundary
- Open Channel

SCALE 1"=200'		BAR IS ONE INCH ON ORIGINAL DRAWING.		VERIFY SCALE 0 1"		IF NOT ONE INCH ON THIS SHEET, ADJUST SCALES ACCORDINGLY.		PUBLIC UTILITY DISTRICT NO. 1 OF CHELAN COUNTY WENATCHEE, WASHINGTON		Storm Water Management Plan Confluence State Park Wenatchee, WA.		SHEET 3 OF 11	
								FOR				REVISION	
								REC. BY				DATE	
								DRFT				DWG.	

FIGURE 5A. WENATCHEE CONFLUENCE STATE PARK - CAMPING AND BOAT LAUNCH



SCALE 1"=200'		BAR IS ONE INCH ON ORIGINAL DRAWING.		VERIFY SCALE 0 1"		IF NOT ONE INCH ON THIS SHEET, ADJUST SCALES ACCORDINGLY.		PUBLIC UTILITY DISTRICT NO. 1 OF CHELAN COUNTY WENATCHEE, WASHINGTON				Storm Water Management Plan Confluence Natural Area Confluence State Park Wenatchee, WA.		SHEET 4 OF 11	
								FOR						REVISION	
								REQ. BY		DRFT				DATE	
														DWG.	

FIGURE 5B. CONFLUENCE STATE PARK - NATURAL AREA



LEGEND

District Property Boundary


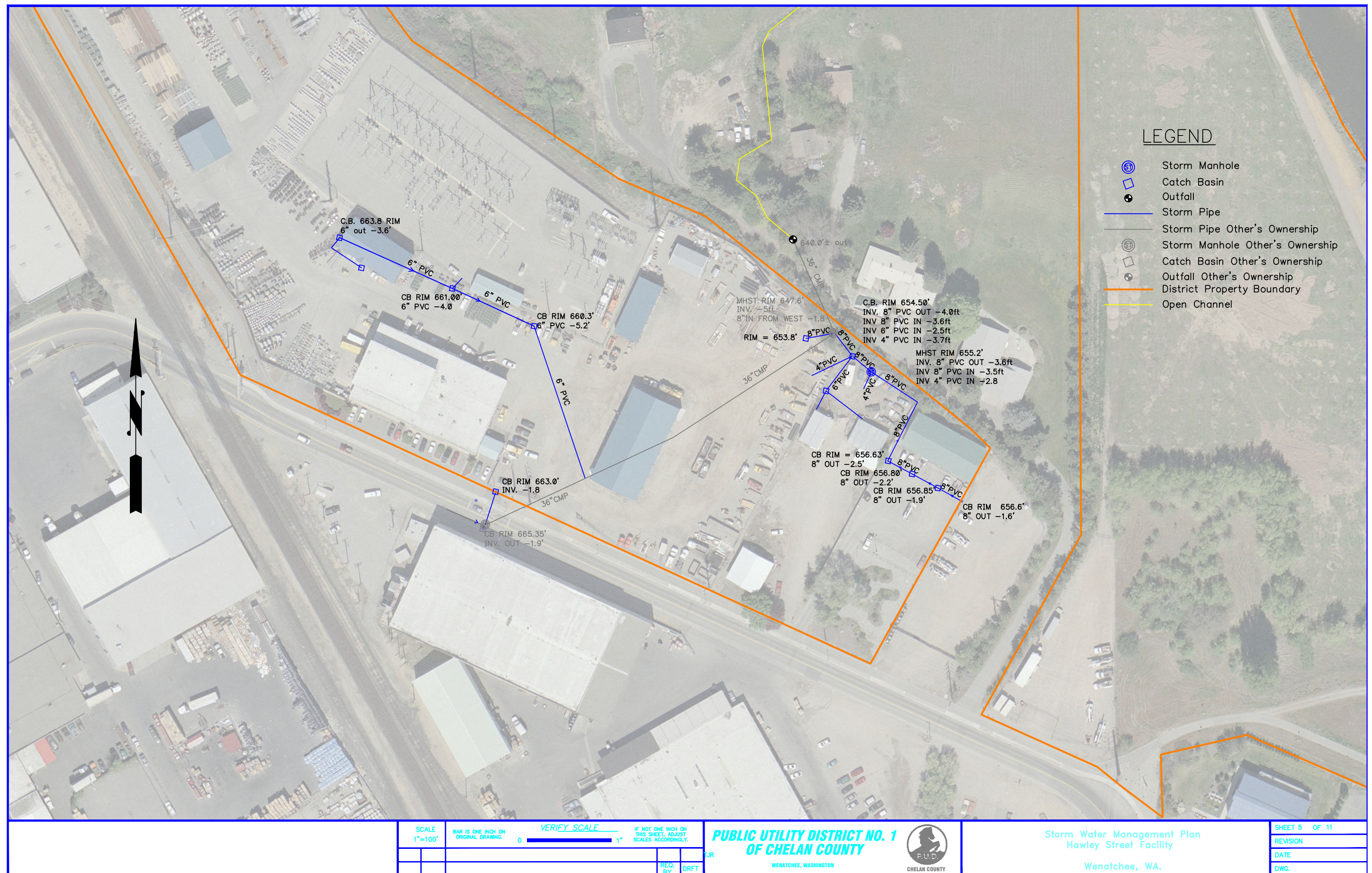
SCALE 3/5/15	BAR IS ONE INCH ON ORIGINAL DRAWING.	VERIFY SCALE 0 1"	IF NOT ONE INCH ON THIS SHEET, ADJUST SCALES ACCORDINGLY.	PUBLIC UTILITY DISTRICT NO. 1 OF CHELAN COUNTY WENATCHEE, WASHINGTON		Storm Water Management Plan Horan Road Pump House and Storage Building Wenatchee, WA.	SHEET 2 OF 11
				TJR			REVISION
				REQ. BY	DRFT		DATE
							DWG.

FIGURE 6. HORAN PUMP HOUSE AND STORAGE FACILITY



APPENDIX A

NOTIFICATION OF COVERAGE UNDER THE EASTERN WASHINGTON PHASE II MUNICIPAL STORMWATER GENERAL PERMIT NO. WAR04-6208

THIS PAGE IS INTENTIONALLY LEFT BLANK.



STATE OF WASHINGTON
DEPARTMENT OF ECOLOGY

15 W Yakima Ave, Ste 200 • Yakima, WA 98902-3452 • (509) 575-2490

December 8, 2014

Mr. Keith Truscott
Natural Resources Director
PUD No. 1 of Chelan County
PO Box 1231
Wenatchee, WA 98807-1231

RE: Notification of Coverage under the Eastern Washington Phase II Municipal Stormwater General Permit No. WAR04-6208

Dear Mr. Truscott:

On August 1, 2012, the Department of Ecology (Ecology) reissued the **National Pollutant Discharge Elimination System and State Waste Discharge General Permit for Discharges from Small Municipal Separate Storm Sewers in Eastern Washington (The Eastern Washington Phase II Municipal Stormwater Permit)**. The permit became effective on August 1, 2014.

Ecology received a notice of intent (NOI) from PUD No. 1 of Chelan County for permit coverage under the Eastern Washington Phase II Municipal Stormwater Permit on October 14, 2014. Ecology found the NOI complete and hereby grants the requested coverage effective as of January 1, 2015. Most of the permit timelines will be based on this effective date.

Your permit coverage number is **WAR04-6208**. Please use this number on all correspondence related to your permit. Your permit coverage may be amended at any time throughout this permit cycle in the event that you develop an agreement with another entity (or entities) to become co-permittees.

Geographic area of coverage under the permit:

As described in S1.A.3, the geographic extent of coverage for your permit will be established at the time coverage is granted. For your permit, the area of coverage is:

Those areas under control of PUD No. 1 of Chelan County that are in the Census Defined Urbanized Area surrounding the City of Wenatchee including the Unincorporated Urban Growth Area of Chelan County surrounding the City of Wenatchee. The areas that have been identified include:

- 1) Headquarters at 327 N Wenatchee Ave;
- 2) Hawley Street Facility at 1150 Hawley St.;
- 3) Riverfront Park on Riverfront Drive;
- 4) Walla Walla Point Park at 1351 Walla Walla Ave;
- 5) Confluence Park at 333 Old Station Road;
- 6) The property at 2310 Horan Road, which has two buildings.



1. For Secondary Permittees required to obtain coverage under this permit, the minimum geographic area of coverage includes all areas identified under S1.A.1. and S1.A.2., above. At the time of permit coverage, Ecology may establish a geographic area of coverage specific to an individual Secondary Permittee.
2. For all Counties required to obtain coverage under this permit, the geographic area of coverage is the urbanized areas and the unincorporated urban growth areas associated with permitted Cities within the urbanized areas that are under the jurisdictional control of the County. The geographic area of coverage also includes any urban growth areas that are contiguous to permitted urbanized areas that are under the jurisdictional control of the County.

Permit and Response to Comments:

The permit, fact sheet, and response to comments can be found on Ecology's website at: <http://www.ecy.wa.gov/programs/wq/stormwater/municipal/phaseiiEwa/ewph2permit.html>. If you have difficulty accessing this information on-line, or would like a hard copy, please contact your regional contact, Terry Wittmeier (contact information provided on page 3).

Fees:

State law authorizes Ecology to assess annual fees to fund the operation of the Water Quality Wastewater Discharge Permit Program. RCW 90.48.465 (Water Pollution Control Act) gives Ecology the authority to establish fees that will fund the administration of wastewater and/or stormwater discharge permits. If you have questions regarding permit fees, please Bev Poston, Fee Administrator, at (360) 407-6425.

Appeal Process:

You have the right to appeal Ecology's determination of your coverage under this permit within thirty (30) days upon receipt of this document. Pursuant to Chapter 43.21B RCW, your appeal must be filed with the Pollution Control Hearings Board, and served on the Department of Ecology, within thirty (30) days of the date of your receipt of this document.

Your notice of appeal must be filed with:

The Pollution Control Hearings Board
4224 – 6th Avenue SE, Rowe Six, Bldg. 2
P.O. Box 40903
Lacey, Washington 98504-7608

Your notice of appeal must also be served on:

The Department of Ecology
Appeals Coordinator
P.O. Box 47608
Olympia, Washington 98504-7608

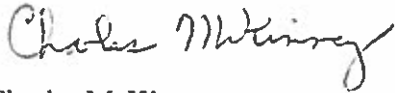
In addition, please send a copy of your notice of appeal to:

Department of Ecology
Kathleen Emmett
P.O. Box 47600
Olympia, Washington 98504-7600

Regional Contact Information:

If you have any questions regarding this letter, permit conditions, or mailing address for submittals, please contact Terry Wittmeier at: 15 W. Yakima Ave, Suite 200, Yakima, WA 98902, (509) 574-3991 or by email at twit461@ecy.wa.gov.

Sincerely,



Charles McKinney
Water Quality Section Manager
Central Regional Office

By Certified Mail 7010 0290 0000 7127 4192

cc: Jennifer Burns, Chelan Co. PUD
Bev Poston, Ecology Permit Fee Unit, HQ
Terry Wittmeier, Central Region Contact