

North Shore Substation

Design Update

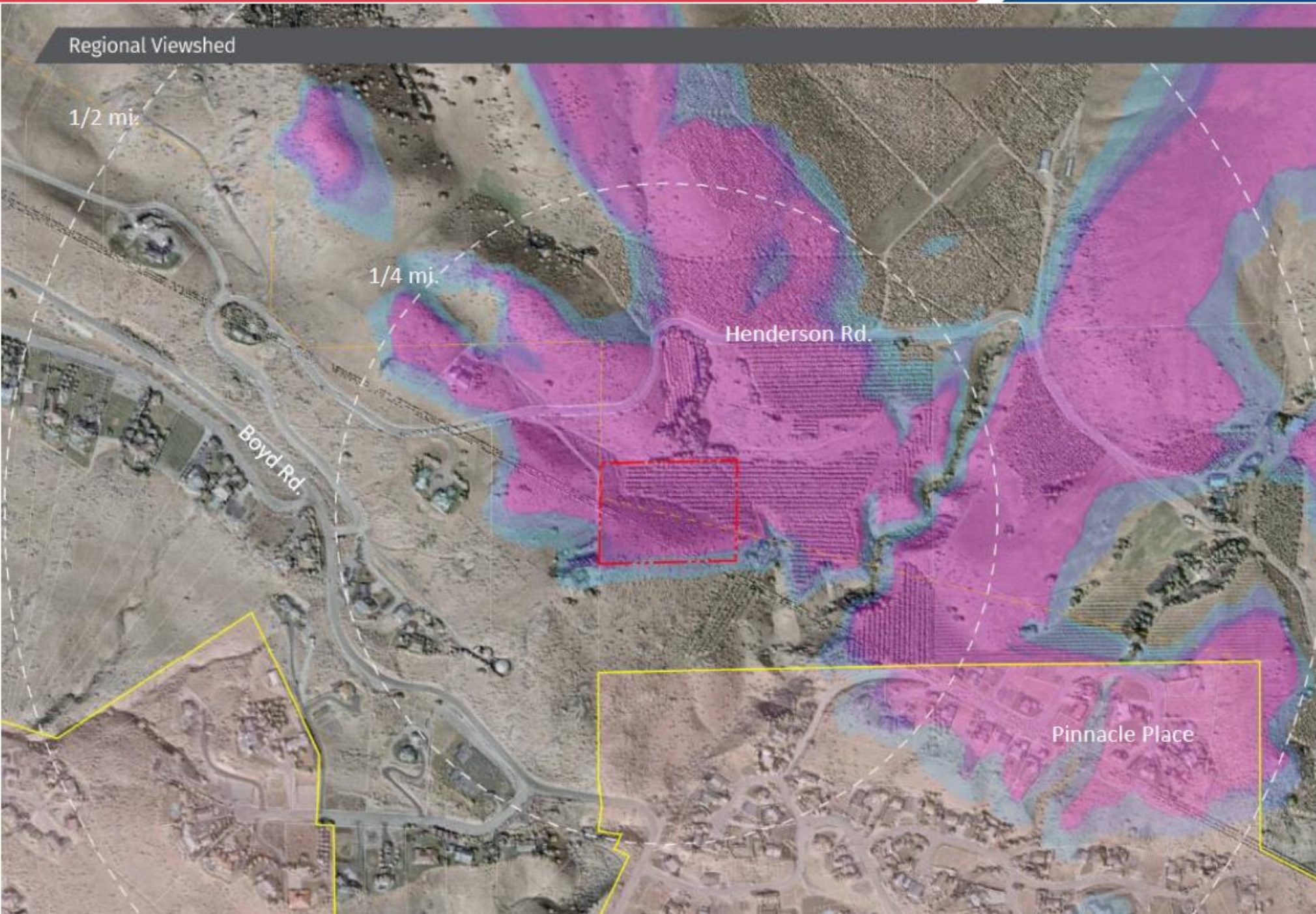
April 13, 2022

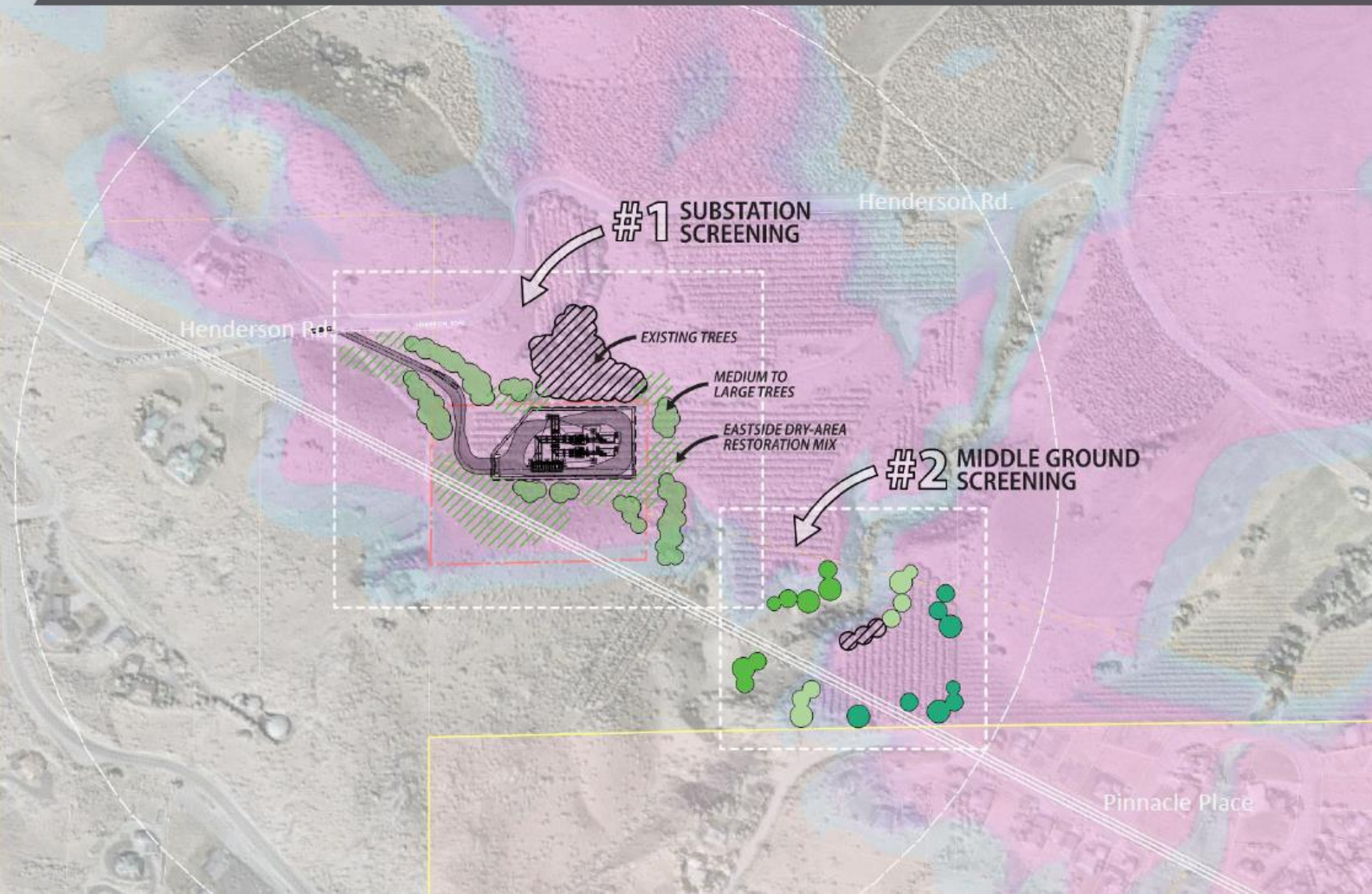


Meeting Purpose

- Recap of Feb. 16 Public Meeting design concepts
- Presentation of next design iteration
- Next steps & construction preview

Regional Viewshed





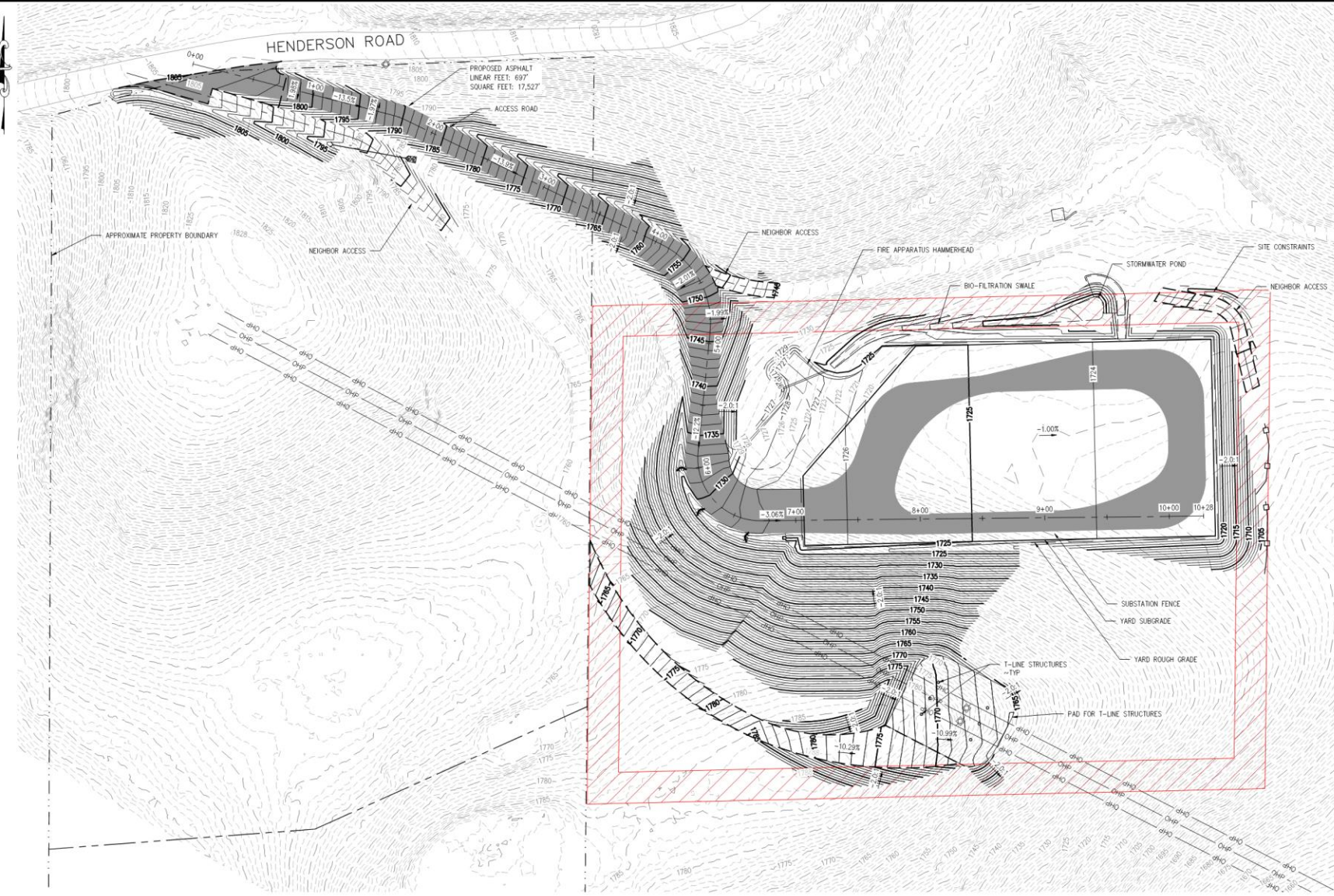
Progress since the Feb. 16 Public Meeting

- Site grading plan complete
- Updated design iteration for landscaping on PUD property
 - This design will be used for Conditional Use Permit application
- Updated design concept for landscaping off PUD property
 - Coordination with private property owners continues, and off-site landscaping may change to meet agreements
 - We will return to stakeholders if there are significant changes to the design as a result of this coordination and will pursue alternative design concepts as needed

Site Grading Plan



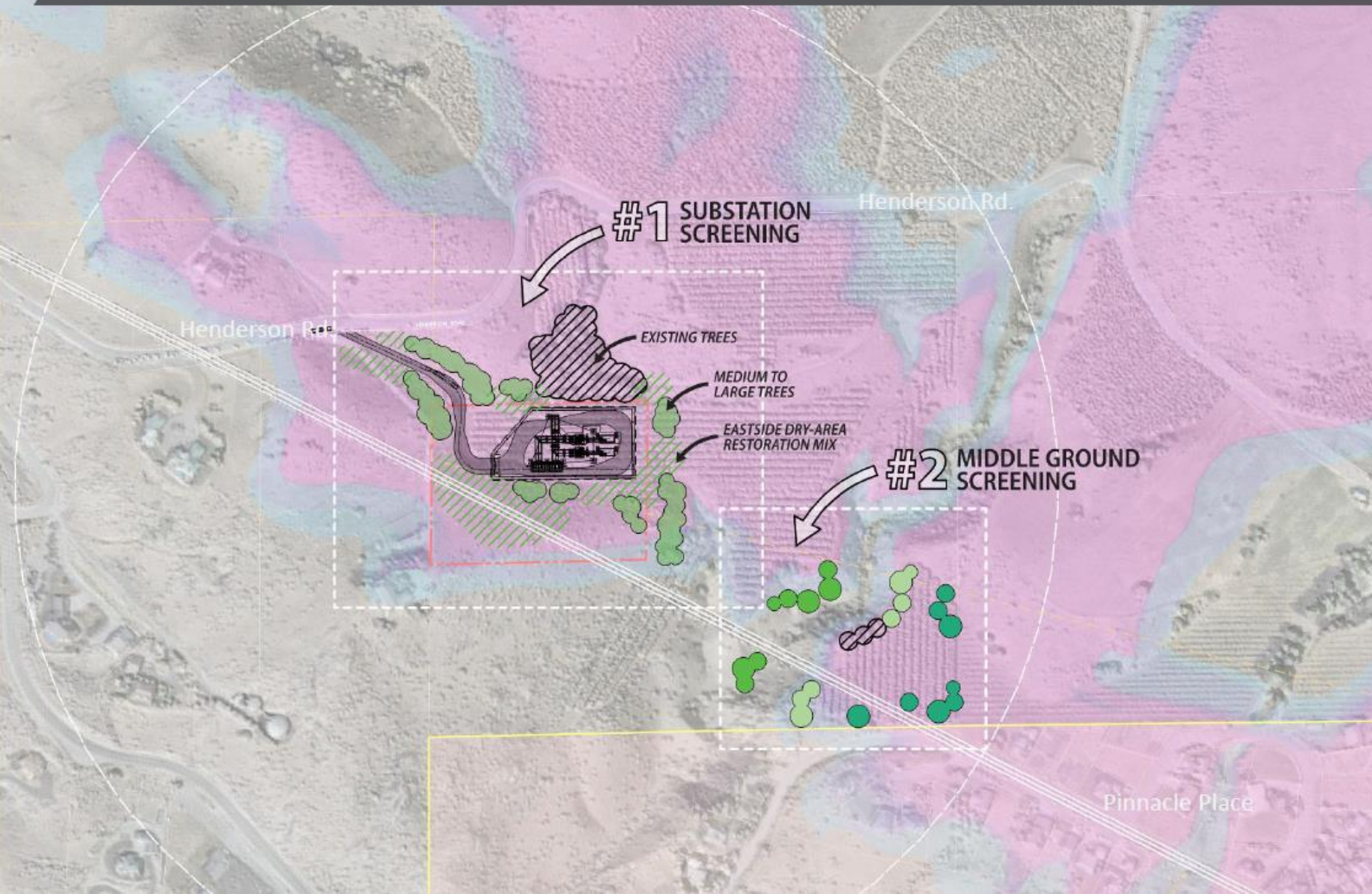
VICINITY MAP



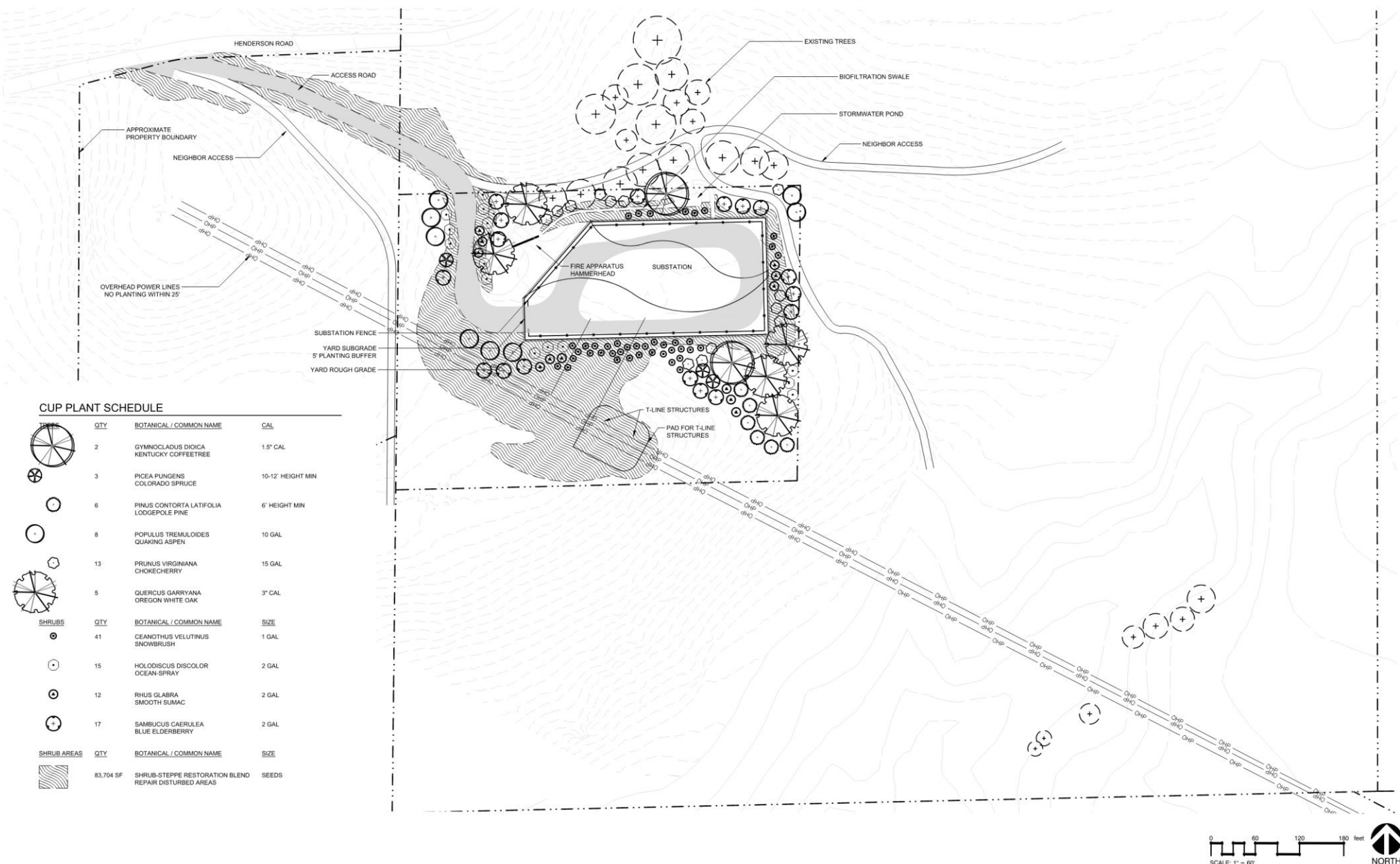
LEGEND

- EXISTING MAJOR CONTOUR LINE
- EXISTING MINOR CONTOUR LINE
- PROPOSED MAJOR CONTOUR LINE
- PROPOSED MINOR CONTOUR LINE
- PROPOSED SUBSTATION BASELINE
- CHAINLINK FENCE
- SILT FENCE
- DITCH CHECK DAM











District Parcel Design



CUP PLANT SCHEDULE

	QTY	BOTANICAL / COMMON NAME	CAL
2	GYMNOCLADUS DIOICA KENTUCKY COFFEETREE	1.5" CAL	
3	PICEA PUNGENS COLORADO SPRUCE	10-12' HEIGHT MIN	
6	PINUS CONTORTA LATIFOLIA LODGEPOLE PINE	6' HEIGHT MIN	
8	POPULUS TREMULOIDES QUAKING ASPEN	10 GAL	
13	PRUNUS VIRGINIANA CHOKECHERRY	15 GAL	
5	QUERCUS GARRYANA OREGON WHITE OAK	3" CAL	
<u>SHRUBS</u>	<u>QTY</u>	<u>BOTANICAL / COMMON NAME</u>	<u>SIZE</u>
	41	CEANOTHUS VELUTINUS SNOWBRUSH	1 GAL
	15	HOLDOISCUS DISCOLOR OCEAN-SPRAY	2 GAL
	12	RHUS GLABRA SMOOTH SUMAC	2 GAL
	17	SAMBUCUS CAERULEA BLUE ELDERBERRY	2 GAL
<u>SHRUB AREAS</u>	<u>QTY</u>	<u>BOTANICAL / COMMON NAME</u>	<u>SIZE</u>
	83,704 SF	SHRUB-STEPPE RESTORATION BLEND REPAIR DISTURBED AREAS	SEEDS



PRIM. LA	CHRIS OVERDORF	CHELAN PUD NO. 1	SCALE	1"=60'-0"	BAR IS ONE INCH ON ORIGINAL DRAWING.	VERIFY SCALE	IF NOT ONE INCH ON THIS SHEET, ADJUST SCALES ACCORDINGLY.
DESIGNER	RACHEL ANDERSEN	2ND ENG.	---	C	03/24/22	CAJ	JFS
PROJ. MGR.	---	REV	DATE	REVISION	REQ. BY	DRFT	

**PUBLIC UTILITY DISTRICT NO. 1
OF CHELAN COUNTY**
WENATCHEE, WASHINGTON



North Shore Substation
PLANTING PLAN

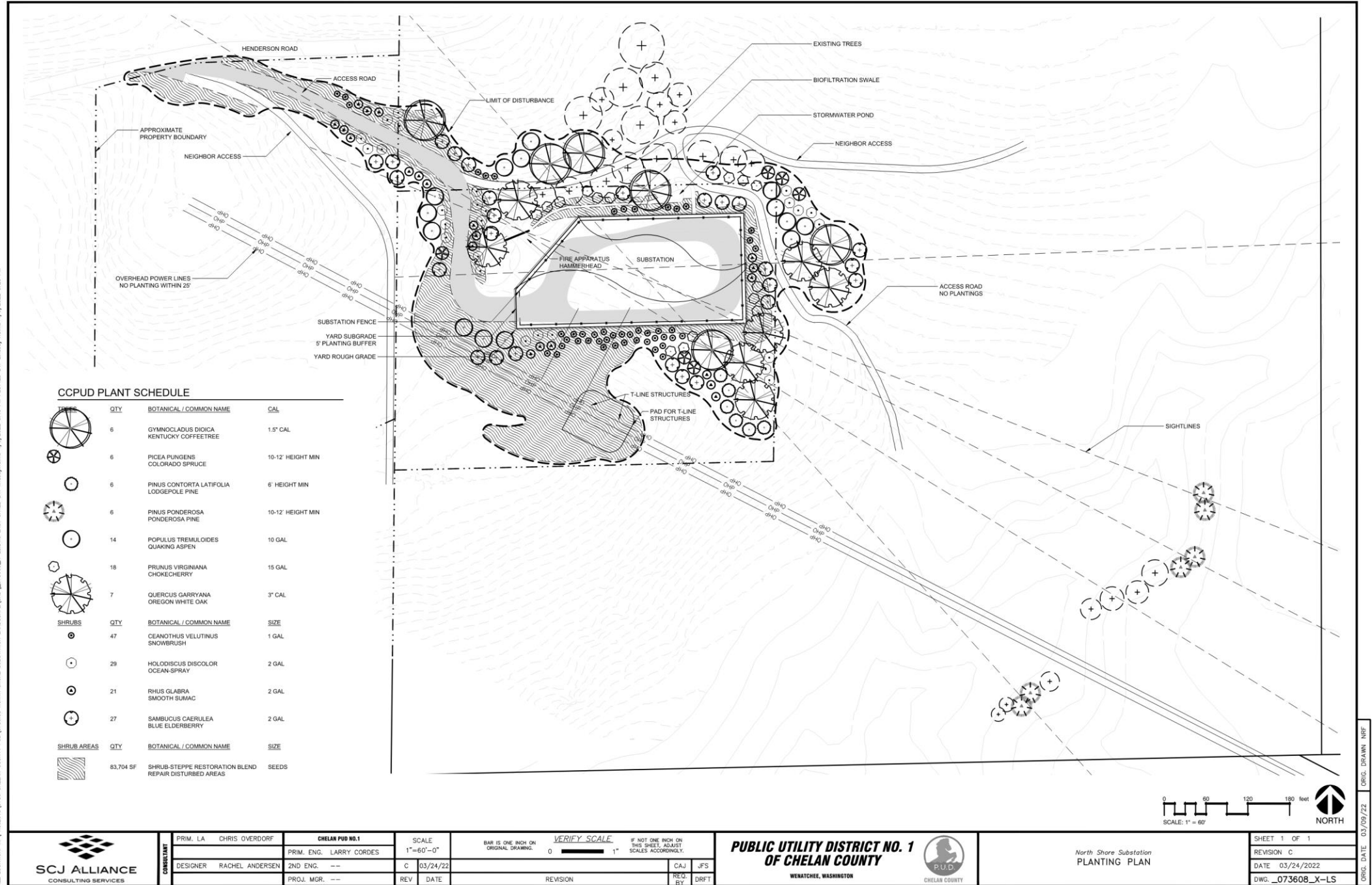
SHEET	1	OF	1
REVISION	C		
DATE	03/24/2022		
DWG.	_073608_X-LS		

ORIG. DATE 03/09/22 ORIG. DRAWN NIF



Aesthetic Design

FILE LOCATION: N:\PROJECTS\0736 CHELAN COUNTY PUD\0736_08 NORTH SHORE SUBSTATION LANDSCAPE\CAD_073608_X-LS.DWG LAST SAVED BY: Lindsay Hawks 4/6/2022 3:20 PM



General Design Concept



PLANT PALETTE



TREE HIGHLIGHT:

● = **PONDEROSA PINE**
(*Pinus ponderosa*)



INSTALL SIZE: ~10'-12' HT
GROWTH RATE: MEDIUM (1'-2'/YR)
MATURE SIZE: 60'-100' HT, 25'-30' W

PLANT PALETTE



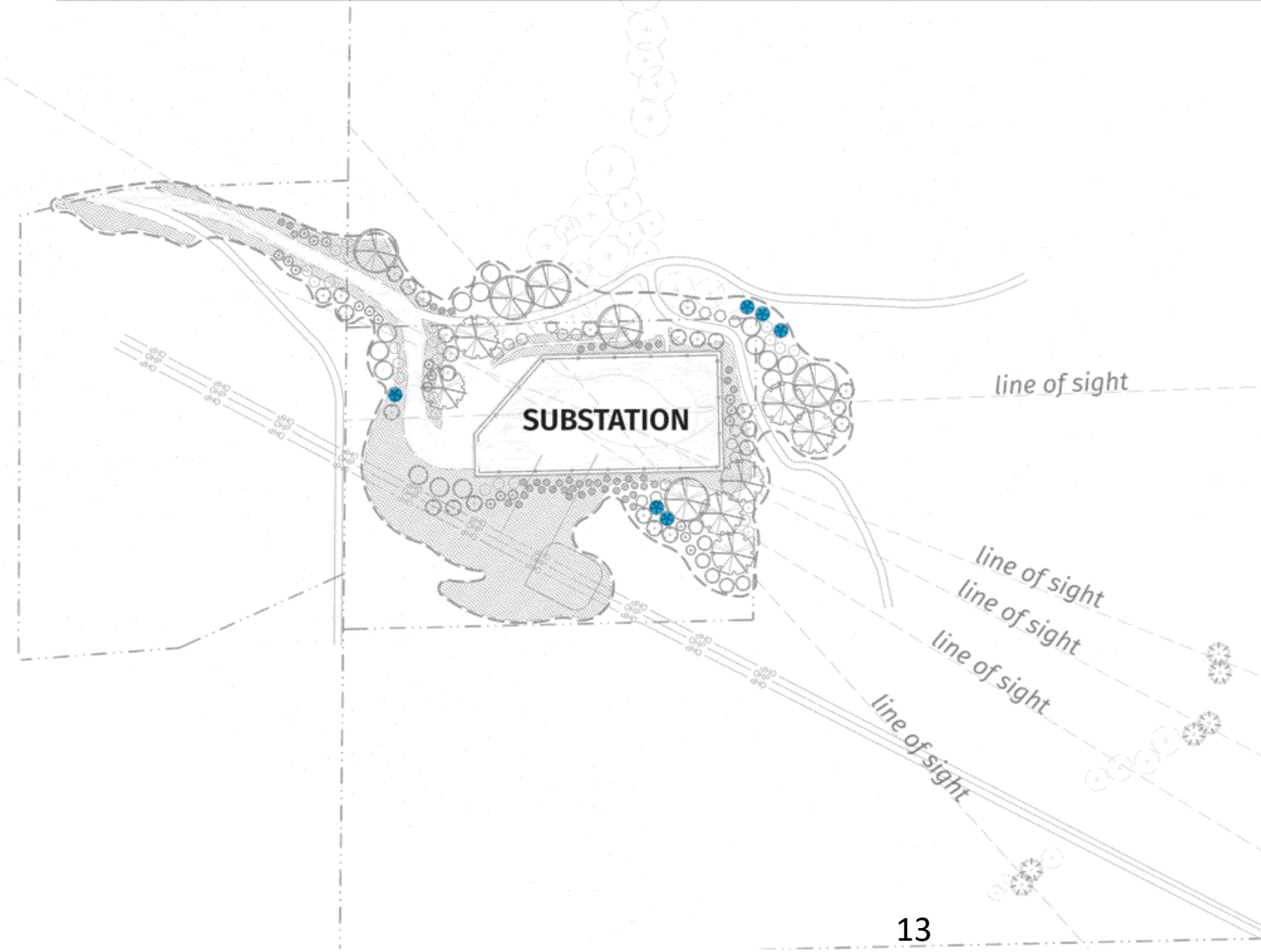
TREE HIGHLIGHT:

- = **LODGEPOLE PINE**
(*Pinus contorta* var. *latifolia*)



INSTALL SIZE: ~6'-8' HT
GROWTH RATE: MEDIUM (1'-2'/YR)
MATURE SIZE: 40'-80' HT, 20'-30' W

PLANT PALETTE



TREE HIGHLIGHT:

● = **BLUE SPRUCE**
(*Picea pungens*)



INSTALL SIZE: ~10'-12' HT
GROWTH RATE: SLOW (6"-1'/YR)
MATURE SIZE: 30'-60' HT, 10-20' W

PLANT PALETTE



TREE HIGHLIGHT:

 = KENTUCKY COFFEE TREE
(*Gymnocladus dioica*)



INSTALL SIZE: 1.5" CAL. | ~10-12' HT
GROWTH RATE: MEDIUM (1'-2'/YR)
MATURE SIZE: 60'-70' HT, 40'-60' W

PLANT PALETTE



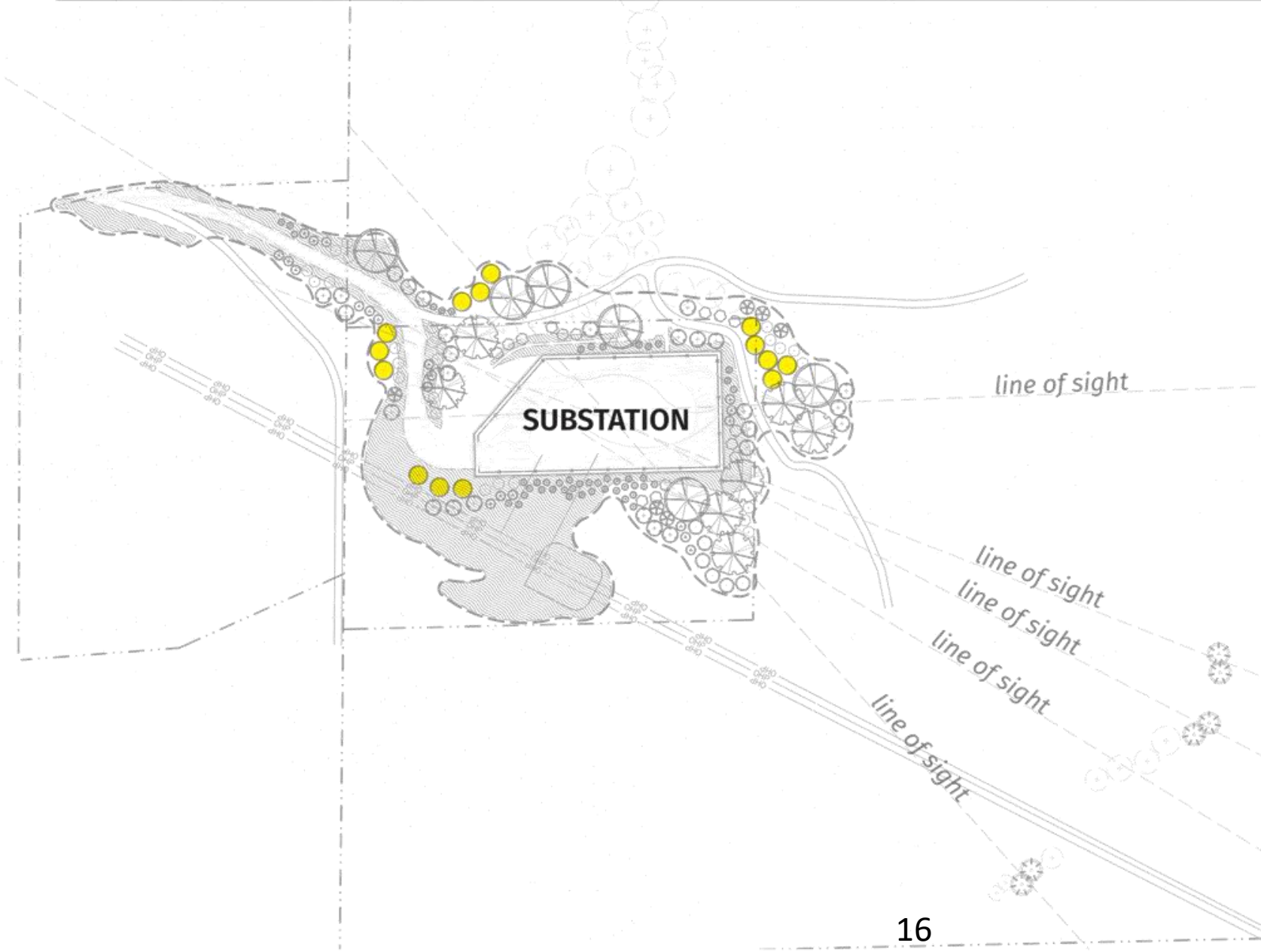
TREE HIGHLIGHT:

 = **OREGON WHITE OAK**
(*Quercus garryana*)



INSTALL SIZE: 3" CAL. | ~12'-16' HT
GROWTH RATE: SLOW (<1'/YR)
MATURE SIZE: 30'-70' HT, 30'-60' W

PLANT PALETTE



TREE HIGHLIGHT:

● = **QUAKING ASPEN**
(*Populus tremuloides*)



INSTALL SIZE: 10 GAL. | ~5'-6' HT
GROWTH RATE: FAST (+2'/YR)
MATURE SIZE: 40'-50' HT, 20'-30' W

PLANT PALETTE



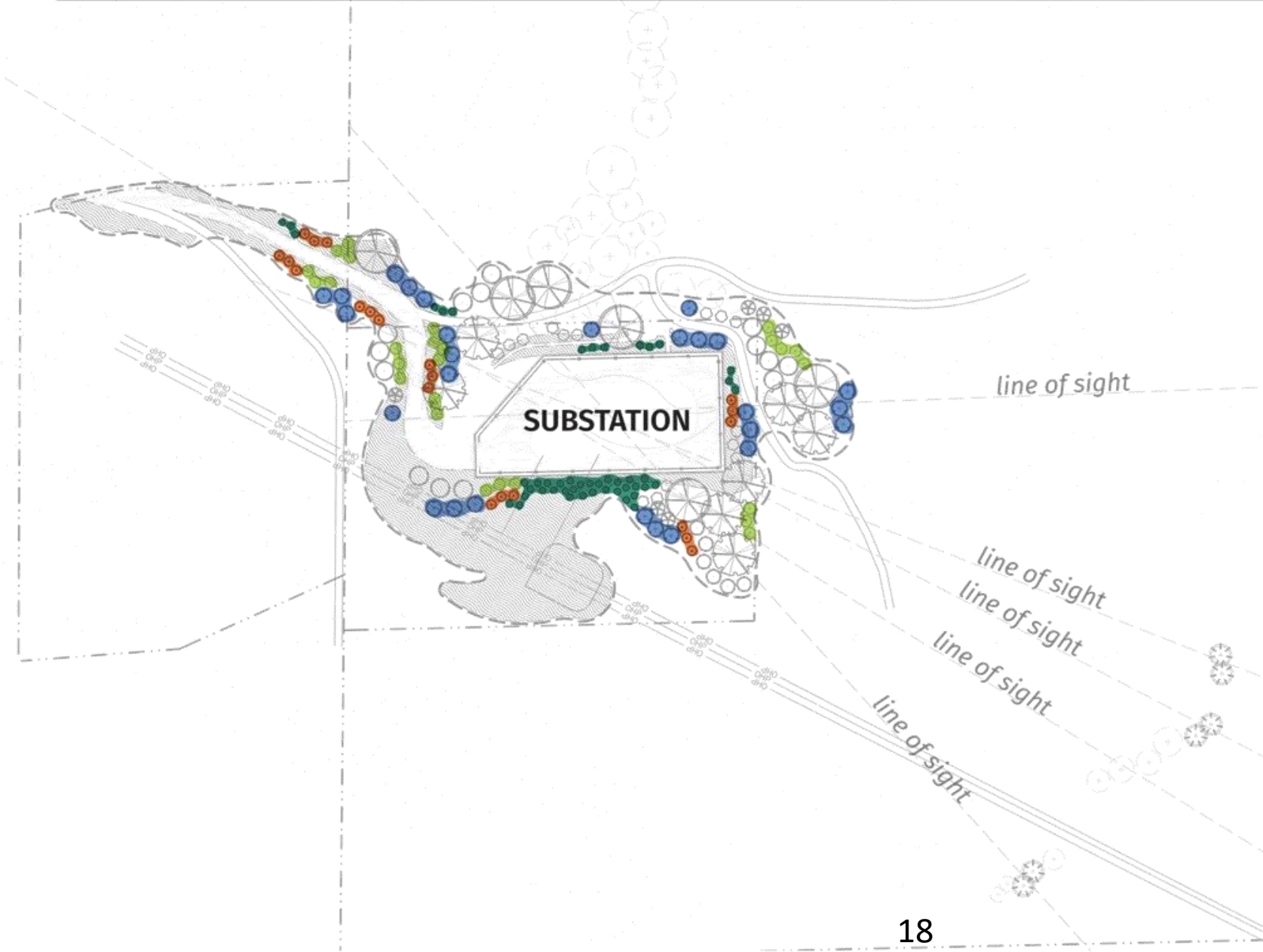
TREE HIGHLIGHT:

● = **CHOKECHERRY**
(*Prunus virginiana*)



INSTALL SIZE: 15 GAL. | ~6'-10' HT
GROWTH RATE: MEDIUM (1'-2'/YR)
MATURE SIZE: 15'-30' HT, 12'-20' W

PLANT PALETTE



Long-term Maintenance

- Irrigation to establish growth
- High-interval, weekly grounds maintenance while landscaping is established
 - Replacement of non-surviving plants
 - Weeding, fertilizing and irrigation system maintenance
- Approximately monthly grounds maintenance after landscaping is established/mature
- Noxious weed removal
- Firewise management

Preparing for Construction

- Site prep work anticipated to begin in August
- Expect increased construction traffic on Boyd and Henderson roads – flaggers or spotters will be present during equipment deliveries
- You may hear typical construction noise during work hours Monday – Friday, 7 am – 6 pm
- Construction equipment will be staged on site
- Dust control continuous during construction, followed by restoration
- Ongoing construction updates

Next Steps

- **April:** Conditional Use Permit application
- **May:** Advertise Construction Contract
- **July:** Construction Contract Award
- **Summer:** Construction outreach to neighbors starts
- **August:** Contractor mobilization/ initiate earthwork
- **September:** Concrete equipment foundations