

098.100 Series



Originator: J. Flader

Standards Approval:
Jeff Flader

Approval: J. Flader

Date: 3/17/2014

Page 1 of 1

Revision: 1

Stds Committee Approval:

Approved

[illegible]



WOOD CROSSARM SPECIFICATIONS
Transmission Standard Practice

098.100

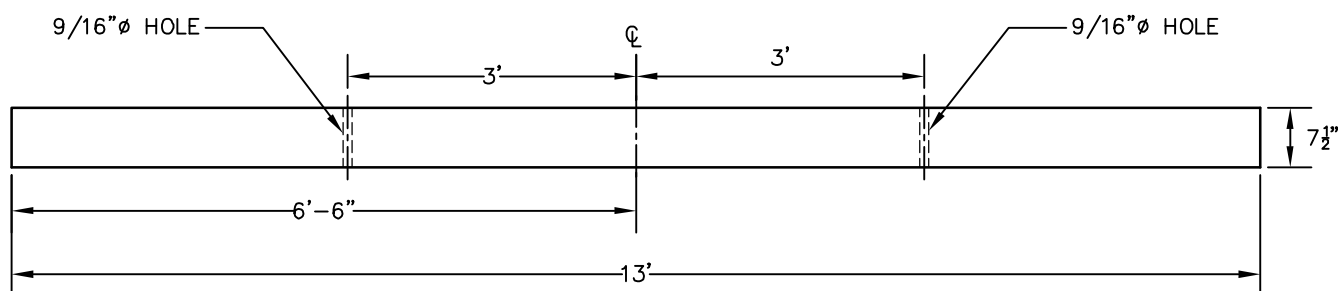
STOCK NO. 006322

Page 9 of 25

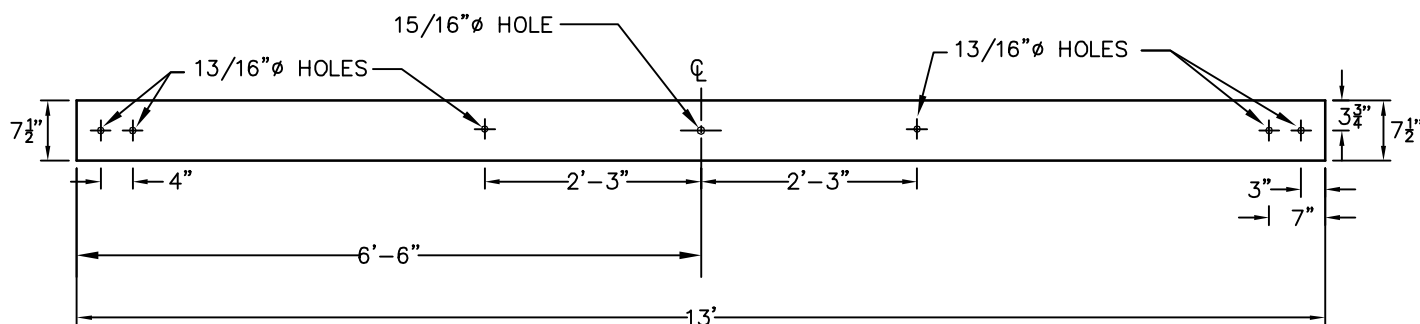
Originator: J. Flader	Standards Approval: Jeff Flader
Approval:	Date: 3/17/2014

Rev #: 1	Revision Description: NEW DRAWING
--------------------	---

TOP



FRONT



CROSSARM: 7 1/2" x 7 1/2" x 13'-0" FOR CDE STRUCTURE
STOCK NO. 006322

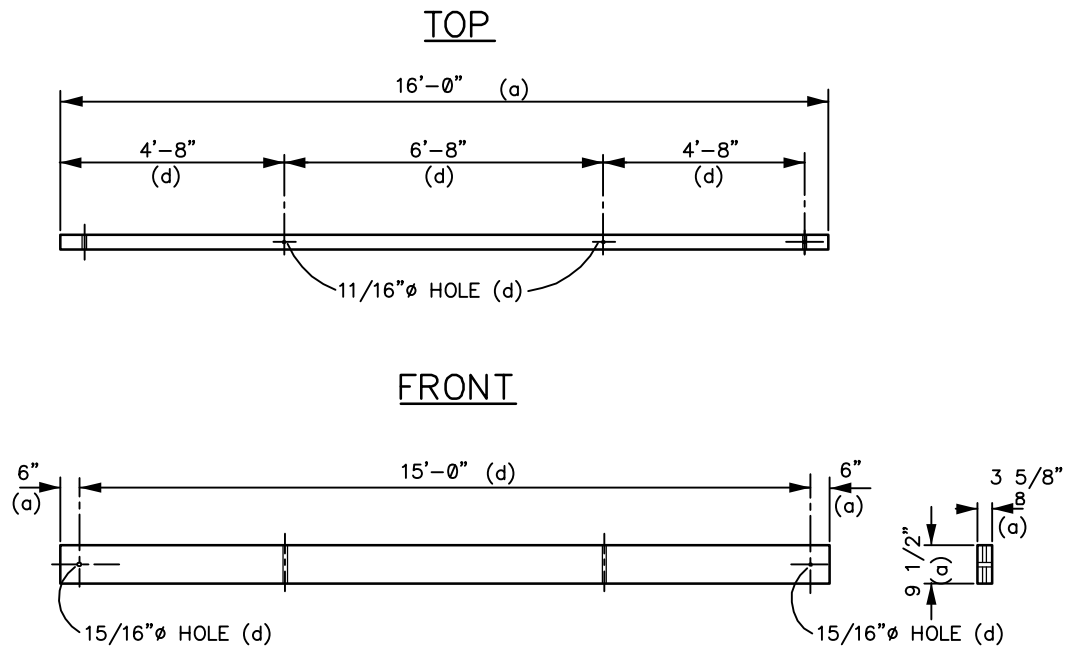


WOOD CROSSARM SPECIFICATIONS
Transmission Standard Practice

098.100
STOCK NO. 80200

Originator: J. Flader	Standards Approval: Jeff Flader
Approval:	Date: 3/17/2014

Rev #:	Revision Description:
1	NEW TITLE BLOCK



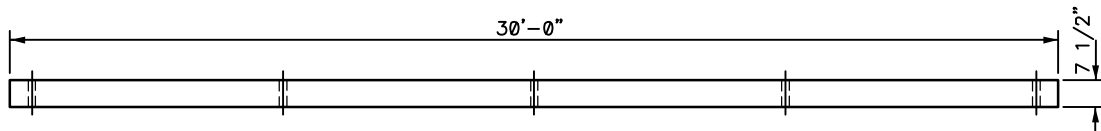
CROSSARM 3 5/8" x 9 1/2" x 16' FOR TYPE G, GA, TPA STRUCTURES
STOCK No.80200



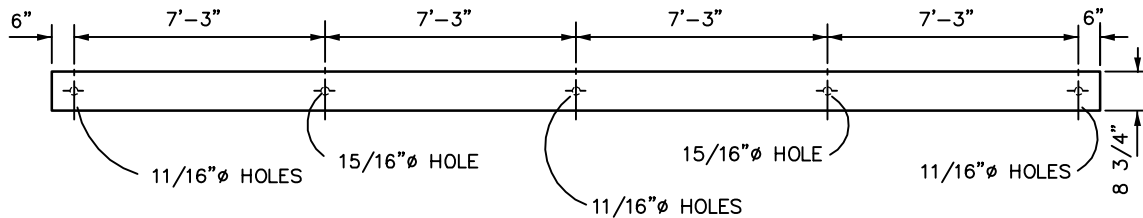
Originator:	JF	Standards Approval:	Jeff Flader
Approval:		Date:	3/17/2014

Rev #:	Revision Description:
1	NEW TITLE BLOCK

TOP



FRONT



CROSSARM 7-1/2" x 8-3/4" x 30' AP
STOCK No.80235



WOOD CROSSARM SPECIFICATIONS

Transmission Standard Practice

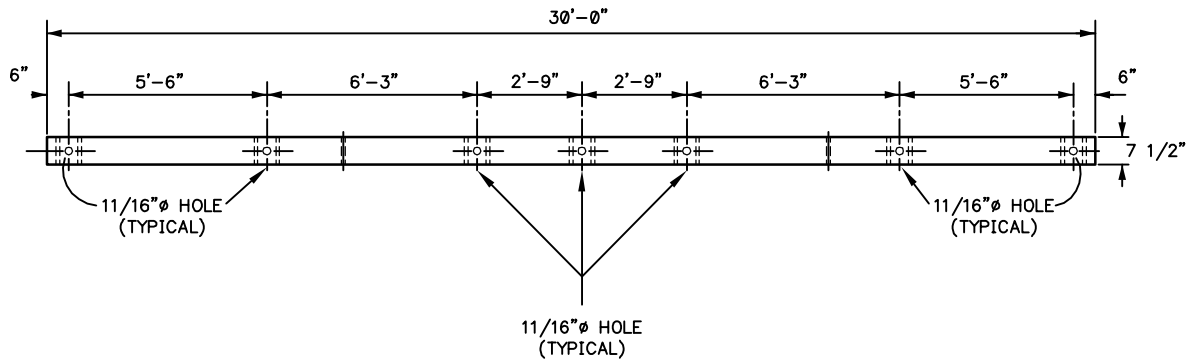
098.100

STOCK NO. 80240

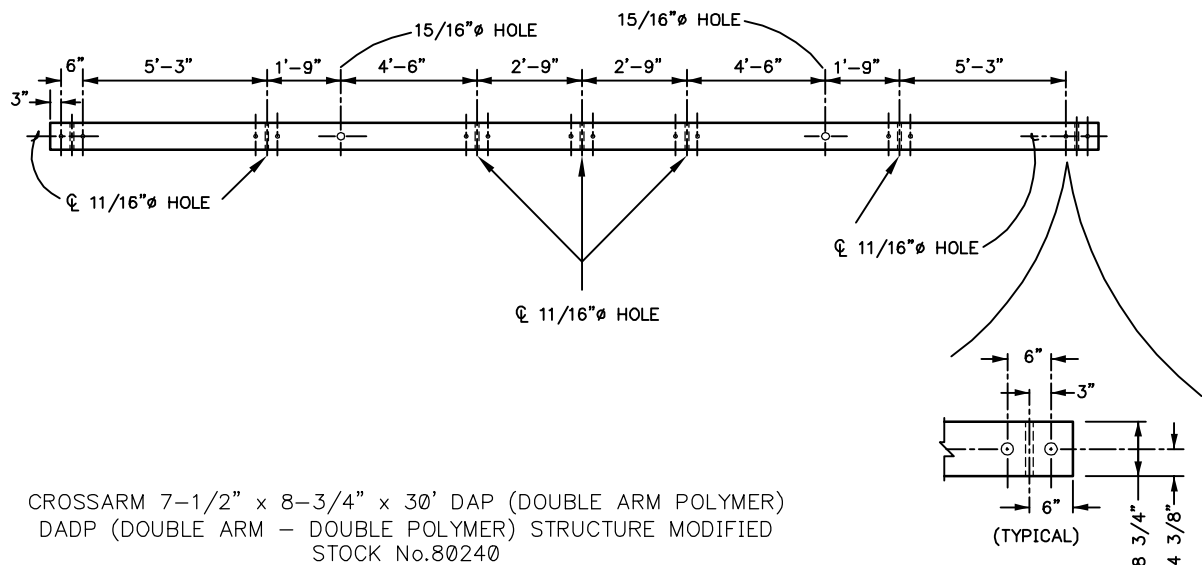
Originator: **J. Flader**
Standards Approval: **Jeff Flader**
Approval: _____ Date: **3/17/2014**

Rev #: **1**
Revision Description: **NEW TITLE BLOCK**

TOP



FRONT





WOOD CROSSARM SPECIFICATIONS
Transmission Standard Practice

098.100

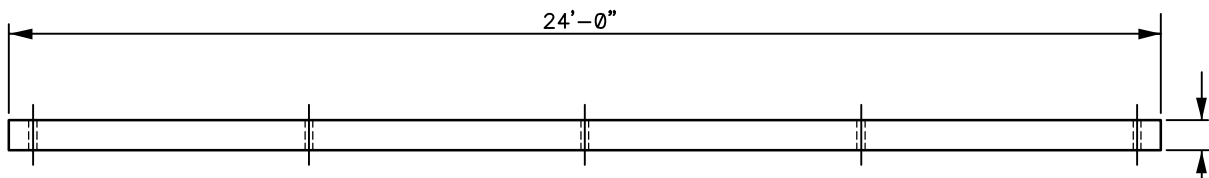
STOCK NO. 80250

Page 14 of 25

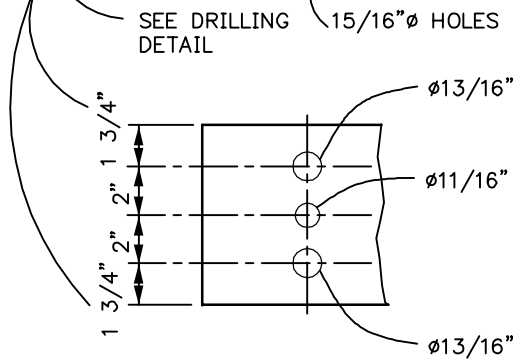
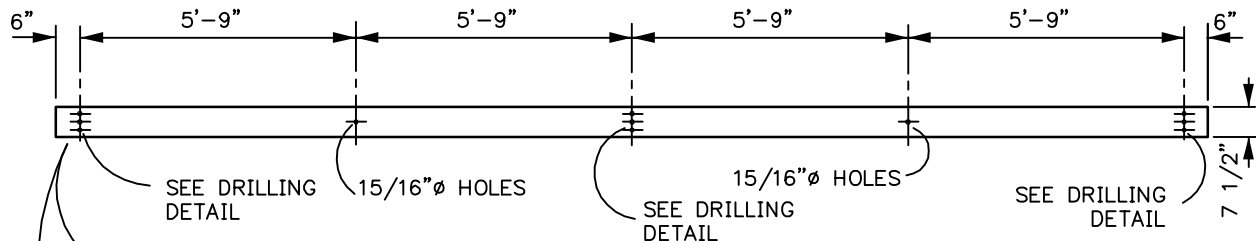
Originator: J. Flader	Standards Approval: Jeff Flader
Approval:	Date: 3/17/2014

Rev #:	Revision Description:
1	NEW TITLE BLOCK

TOP



FRONT



DRILLING DETAIL
TYP. 3 PLACES

CROSSARM 7-1/2" x 7-1/2" x 24' A & E
STOCK No.80250



WOOD CROSSARM SPECIFICATIONS
Transmission Standard Practice

Originator:
J. Flader

Standards Approval:
Jeff Flader

Approval:

Date:
3/17/2014

098.100
STOCK NO. 80260

Page 15 of 25

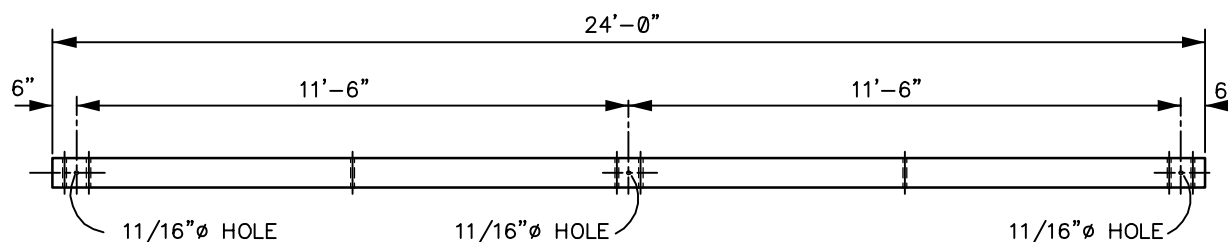
Rev #:

Revision Description:

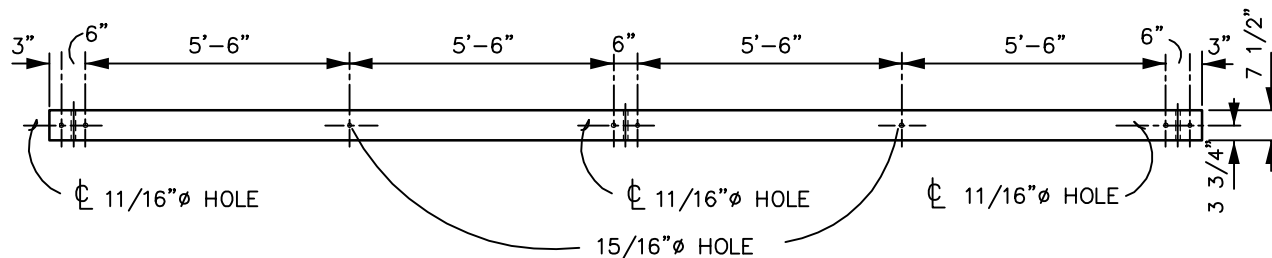
1

NEW TITLE BLOCK

TOP



FRONT



CROSSARM 7-1/2" x 7-1/2" x 24' TYPE DA STRUCTURE
STOCK No.80260



WOOD CROSSARM SPECIFICATIONS
Transmission Standard Practice
098.100-18
STOCK NO. 80300

Originator:
J. Flader

Standards Approval:
Jeff Flader

Approval:

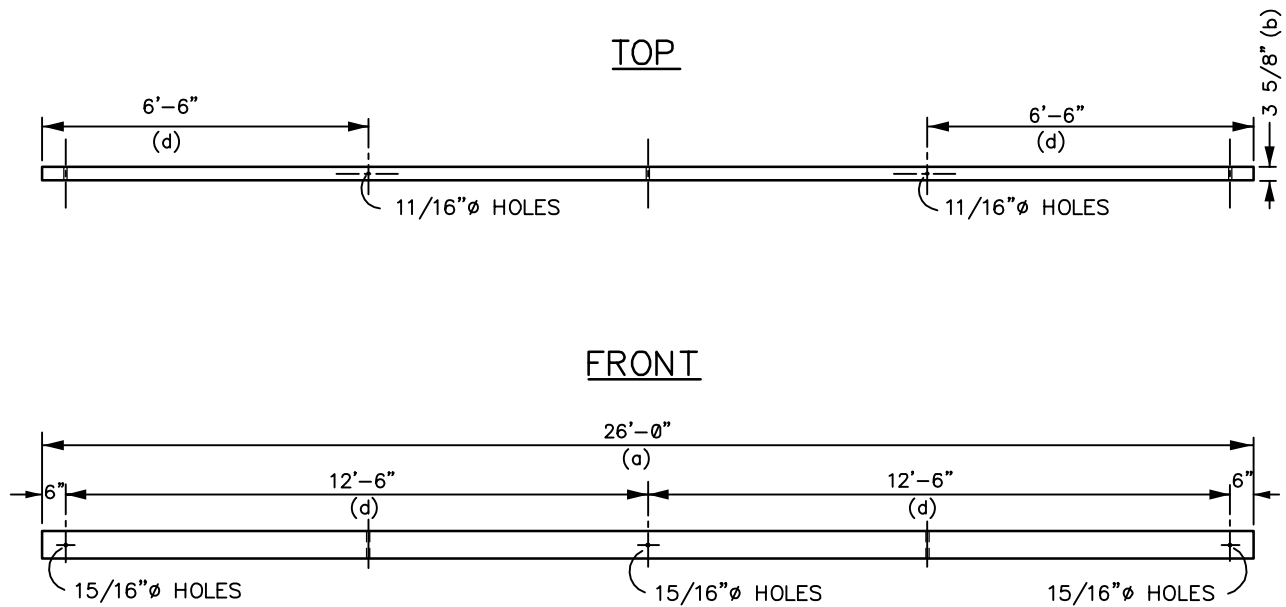
Date:
3/17/2014

Rev #:

Revision Description:

1

NEW TITLE BLOCK



CROSSARM 3-5/8" X 9-1/2" X 26' TYPE D, F, HORIZONTAL SWITCH, T
STOCK No.80300



WOOD CROSSARM SPECIFICATIONS
Transmission Standard Practice

098.100

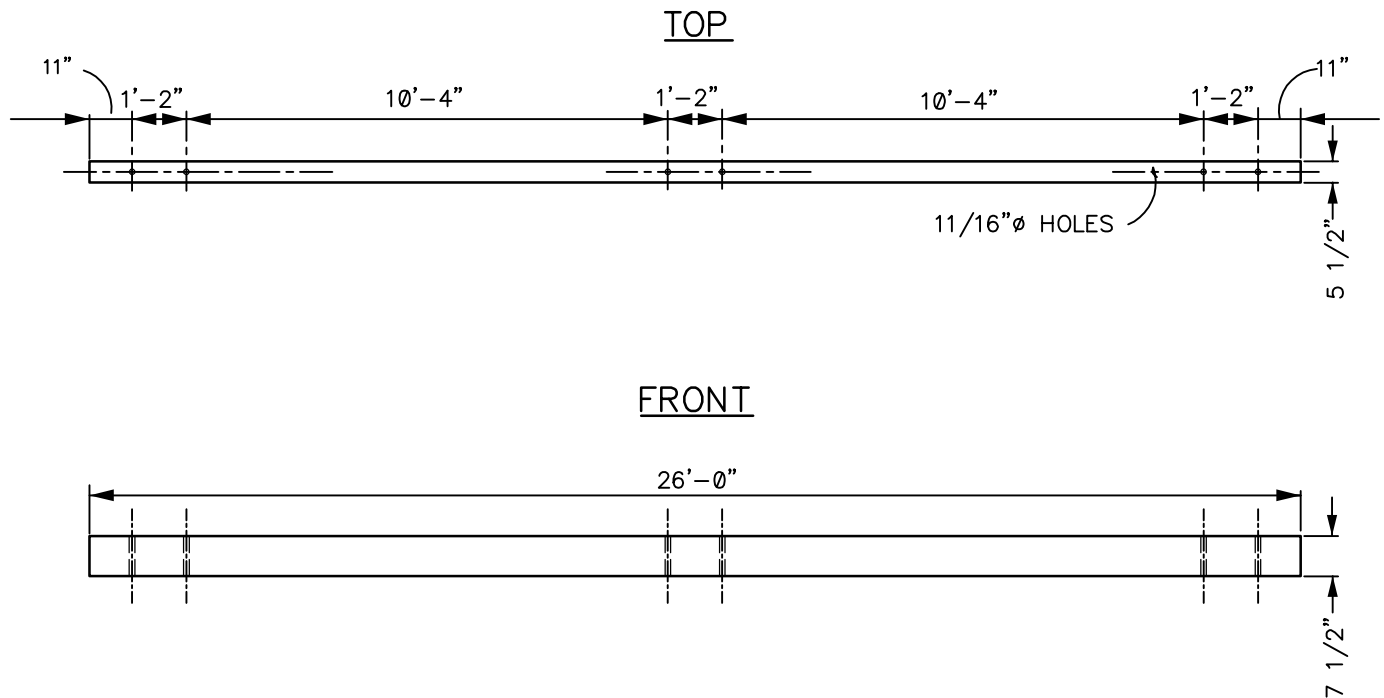
STOCK NO. 80330

Page 1 of 1

Originator: J. Flader	Standards Approval: Jeff Flader
Approval:	Date: 2/27/2018

Rev #: Revision Description:

2



CROSSARM: 5-1/2" x 7-1/2" x 26' FOR 115KV SWITCH PLATFORM
STOCK NO. 80330



WOOD CROSSARM SPECIFICATIONS

Transmission Standard Practice

098.100

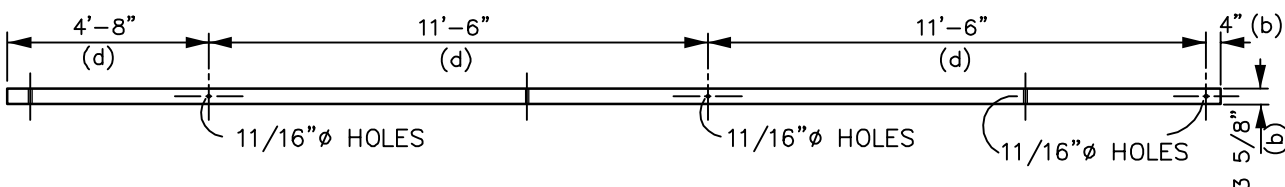
STOCK NO. 80350

Page 21 of 25

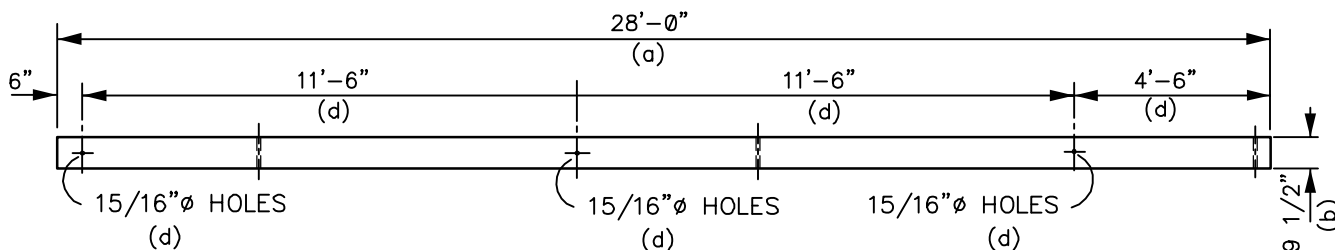
Originator: J. Flader	Standards Approval: Jeff Flader
Approval:	Date: 3/17/2014

Rev #:	Revision Description:
1	NEW TITLE BLOCK

TOP



FRONT



CROSSARM 3-5/8" x 9-1/2" x 28' TYPE G2, G2A & T STRUCTURES
STOCK No.80350



WOOD CROSSARM SPECIFICATIONS
Transmission Standard Practice

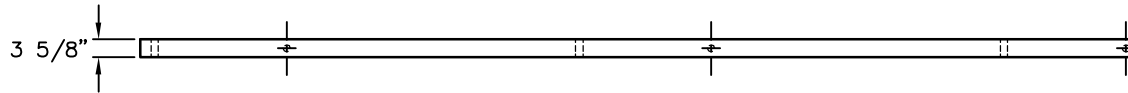
098.100

STOCK NO. 80356

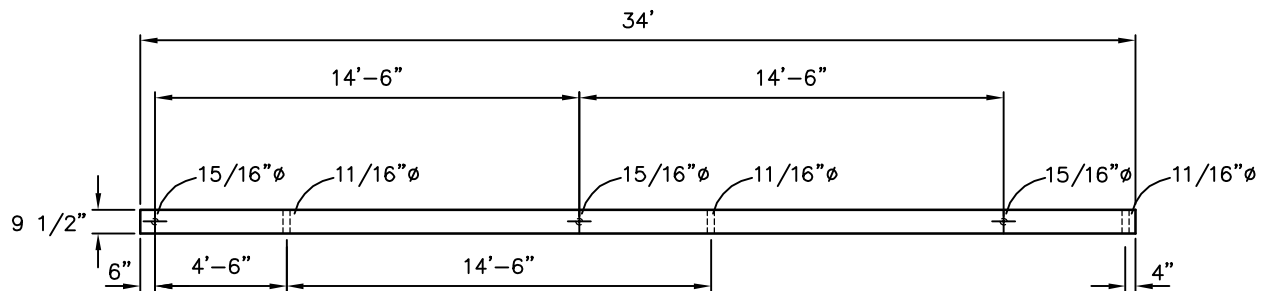
Originator: JF	Standards Approval: Jeff Flader
Approval:	Date: 3/17/2014

Rev #:	Revision Description:
0	NEW DRAWING

TOP VIEW



FRONT VIEW



CROSSARM: 3-5/8" x 9-1/2" x 34'
TYPE G2P & G2AP STRUCTURES
STOCK No. 80356

- Construction Standards -

098.100-25

CHELAN COUNTY
PUBLIC UTILITY DISTRICT
Owned By The People We Serve



WOOD CROSSARM SPECIFICATIONS

Transmission Standard Practice

098.100

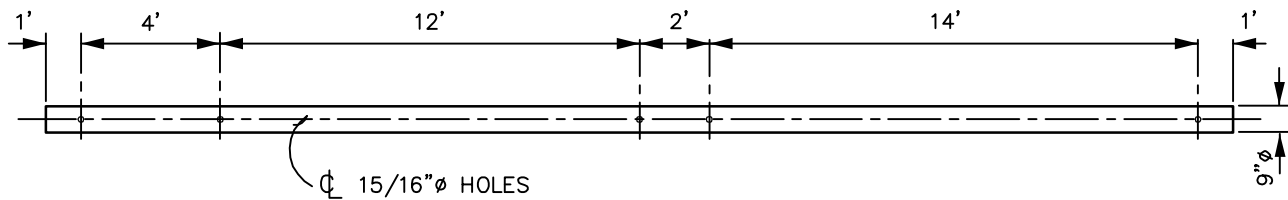
STOCK NO. 80580

Page 25 of 25

Originator: J. Flader	Standards Approval: Jeff Flader
Approval:	Date: 3/17/2014

Rev #:	Revision Description:
1	NEW TITLE BLOCK

FRONT



ROUND CROSSARM 9"Ø x 34"
STOCK No. 80580