



# Wildfire mitigation update

Chad Bowman, Chad Rissman, Rachel Hansen

Oct. 19, 2020



# Why we're here

- New engagement strategy
- Connecting with partners
  - DNR
  - Fire Adapted Communities
  - Cascadia Conservation District
- Potential opportunities

*No action required today*

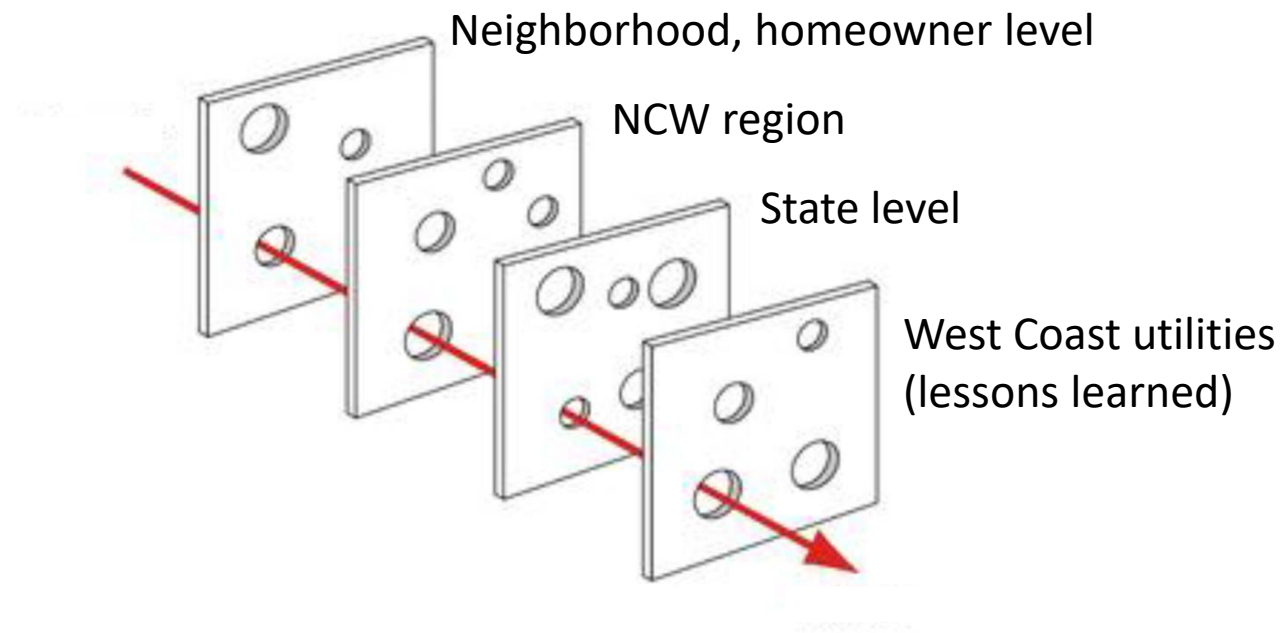




## Background: Recent efforts

- Higher-standard (IWUIC) tree-trimming, inspection
- Disabled auto-reclose during times of high fire risk
- Fire-hardening strategies

# Engagement strategies



# Better data and modeling

HDR study: 2017

Pyrologix/USFS risk assessment: 2018

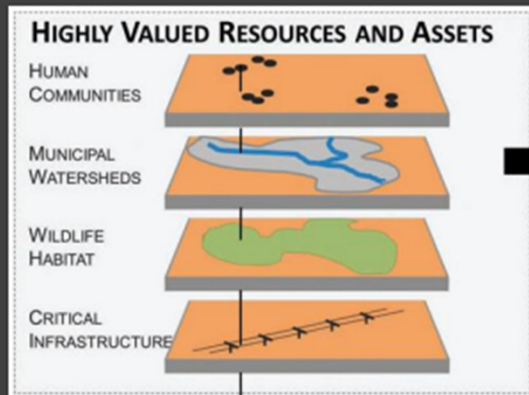
DNR fuel break data: 2020

Reax study (TBA)



# Pyrologix/USFS Study

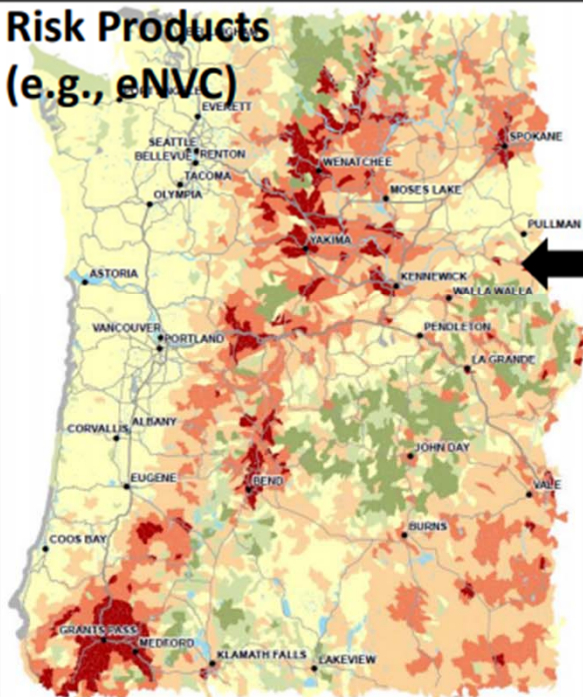
## Flow Chart of the PNW all lands QWRA?



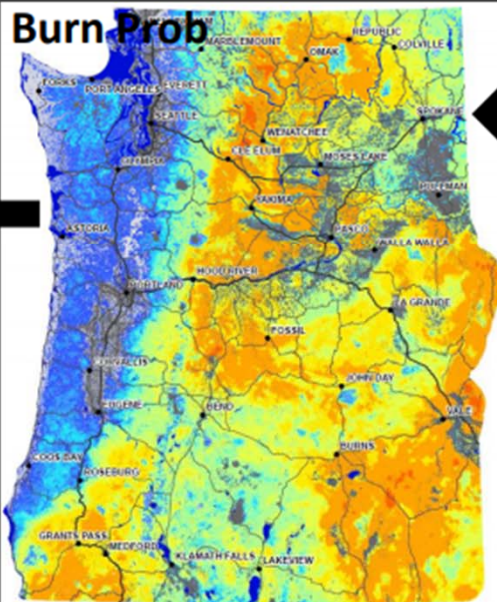
### Response Functions (Resource Specialists)

Sub-HVRA	FIL1	FIL2	FIL3	FIL4	FIL5	FIL6	spark
Cell towers	-10	-20	-40	-60	-80	-90	---
Electric transmission lines	20	20	0	-20	-60	-80	---
FS Repeaters	-10	-20	-40	-60	-80	-90	---
Wooden bridges	-40	-50	-60	-70	-80	-90	---
Other comm sites	-10	-20	-40	-60	-80	-90	---

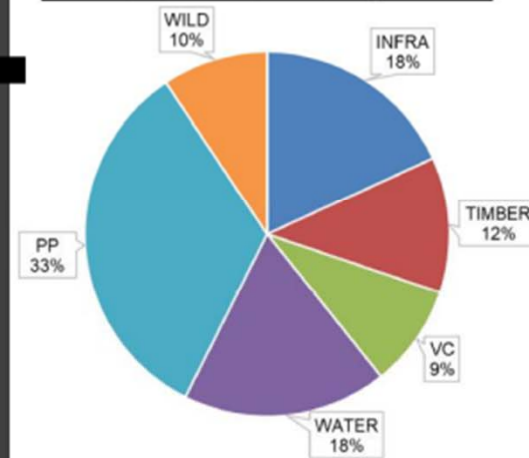
### Risk Products (e.g., eNVC)



### Burn Prob



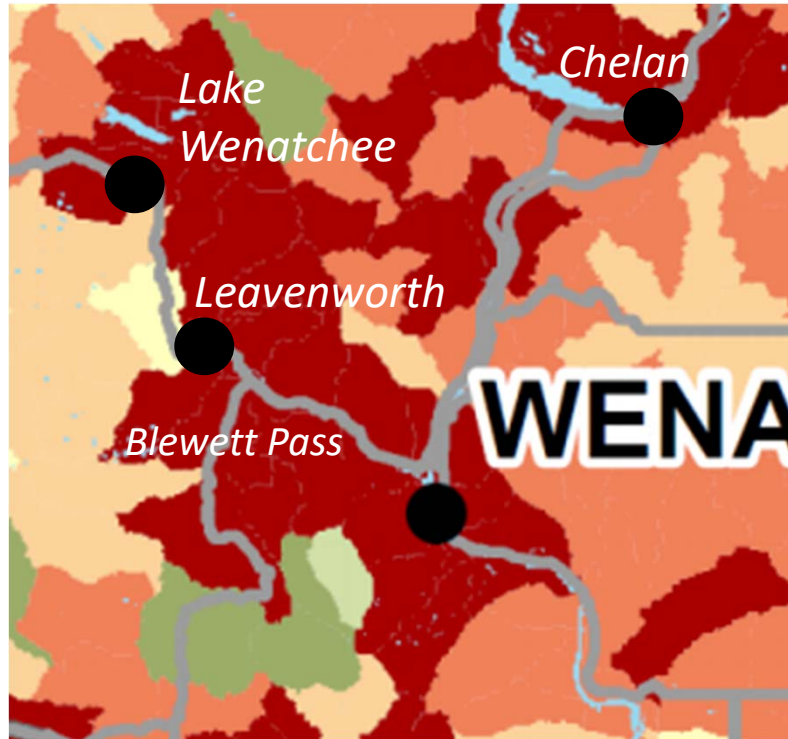
### PNRA Overall Relative Importance



Ranking: (Line Officers)

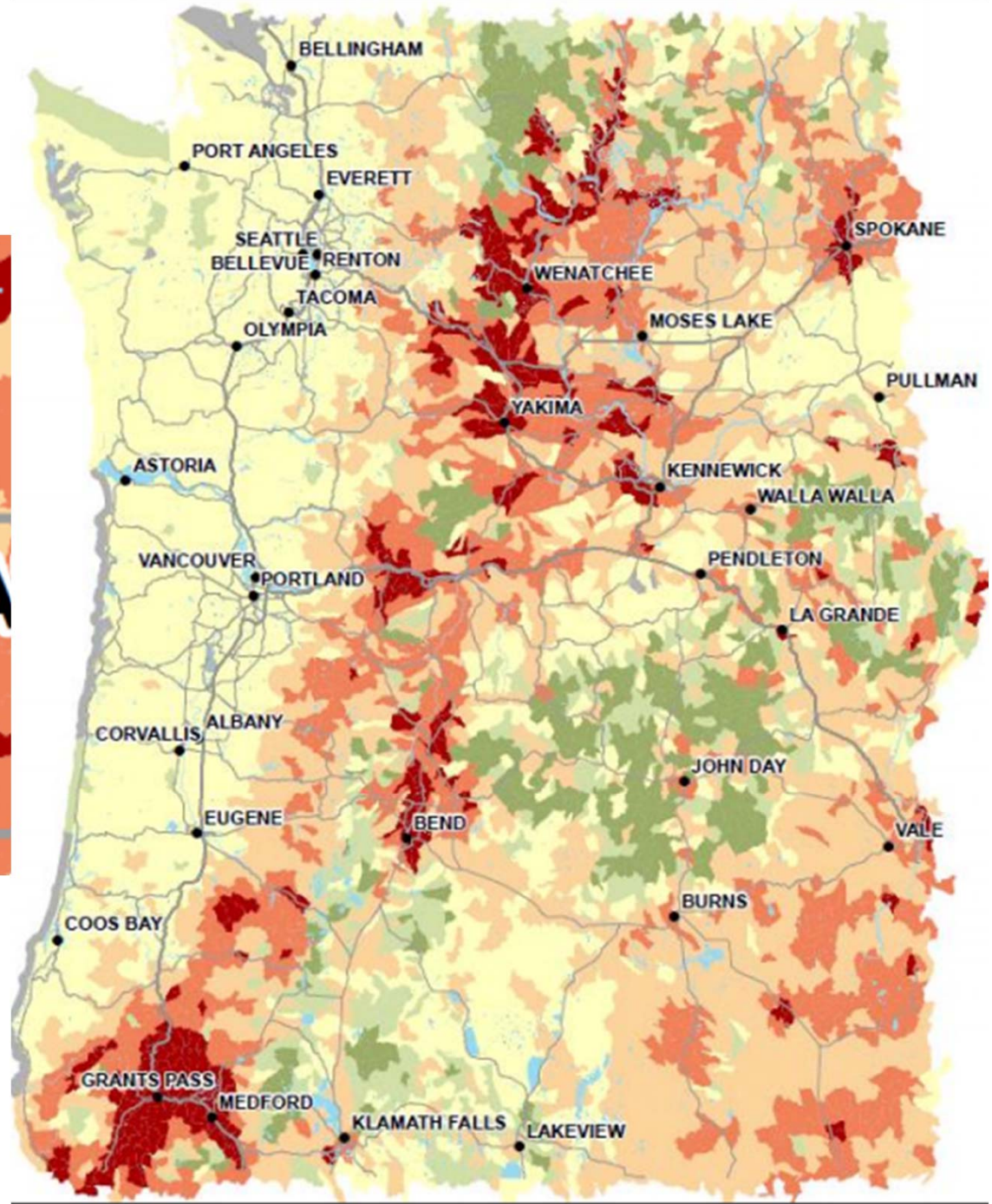


# Pyrologix/USFS Fire Risk Assessment

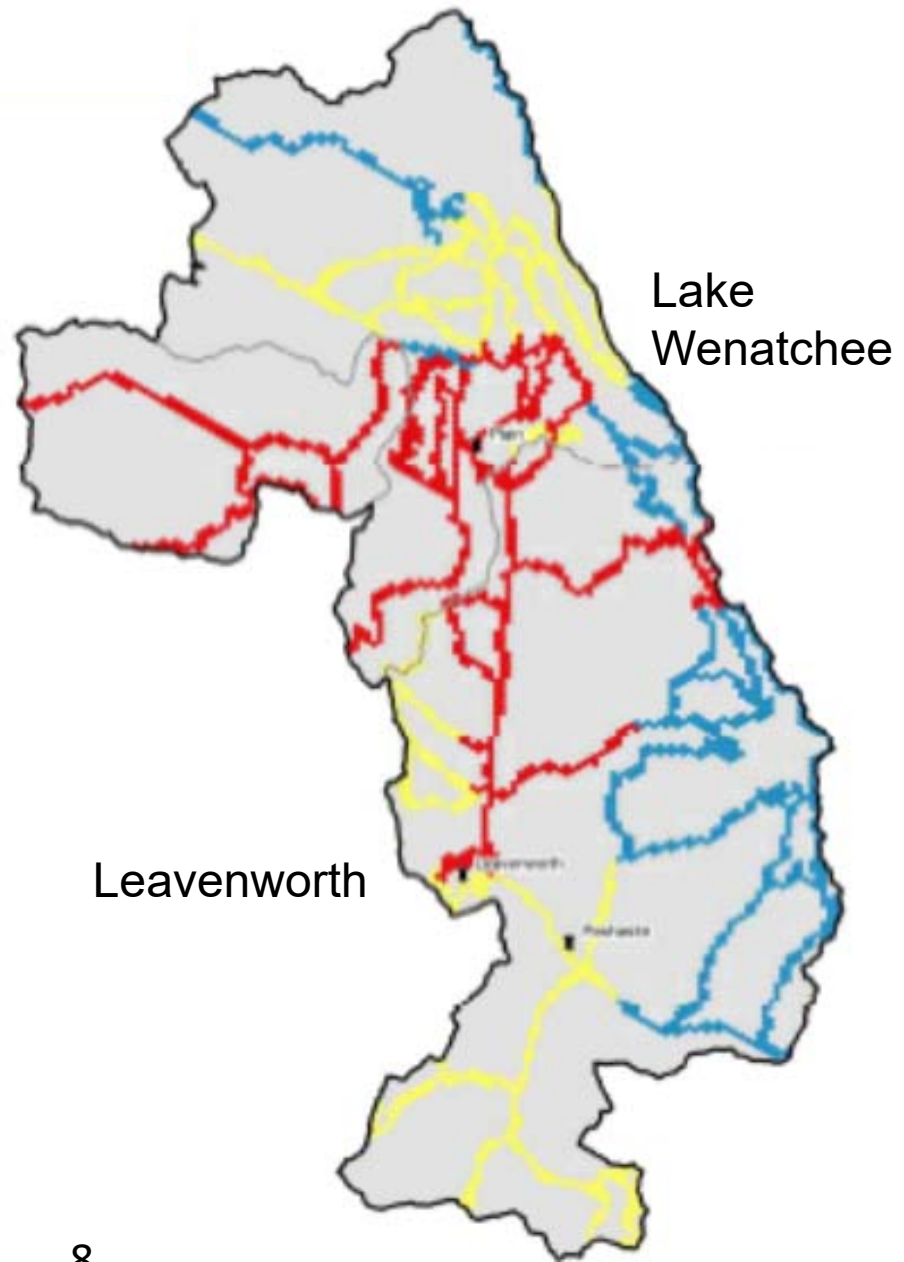


Mean Expected NVC	
Very high	
High	
Moderate	
Low	
Neutral	
Very low benefit	
Low benefit	

Source: Rick Stratton, USFS

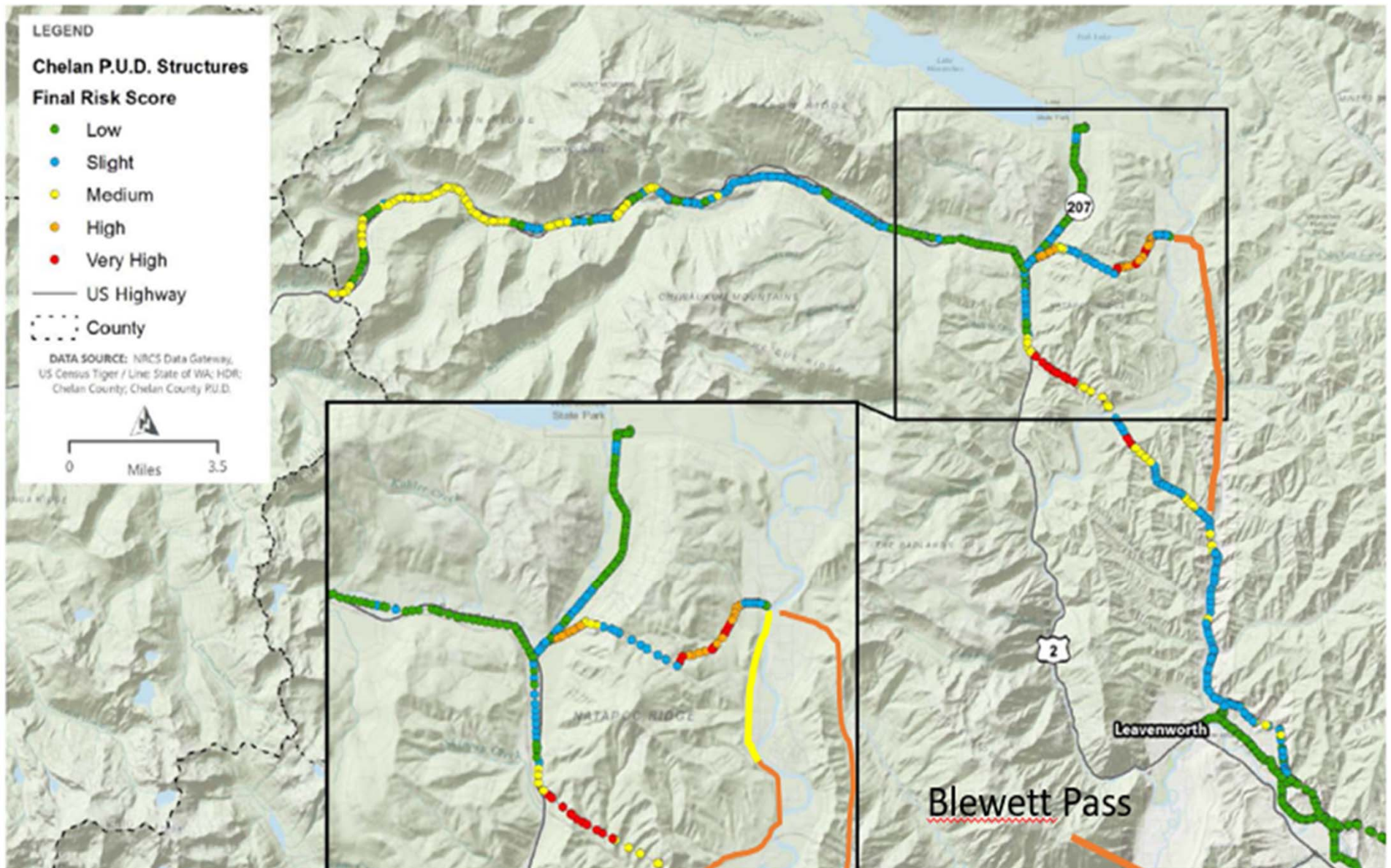


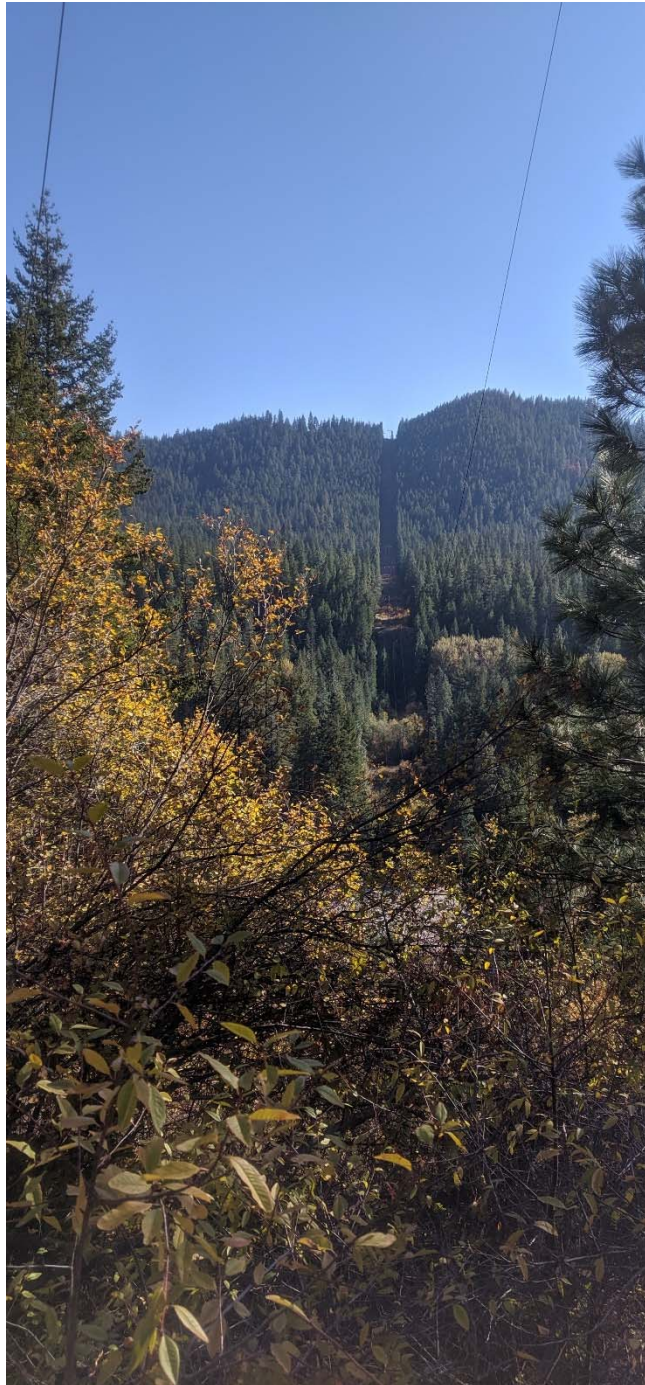
# DNR Fuel Break Study (PODS)





# HDR Risk Assessment





# The Dead Horse Canyon Example

Video: [AC-CC Video](#)



# Fire Adapted Communities



- Potential neighborhood-level partnerships:
  - Lake Wenatchee Fire Adapted Communities Coalition
  - Chumstick Wildfire Stewardship Coalition
- West Coast utility network

# Cascadia Conservation District



*Cascadia Conservation District photo*

## Drafting interlocal agreement

- Potential liaison and outreach
- Community projects overlap with PUD activities
- Pre-application for potential FEMA grants

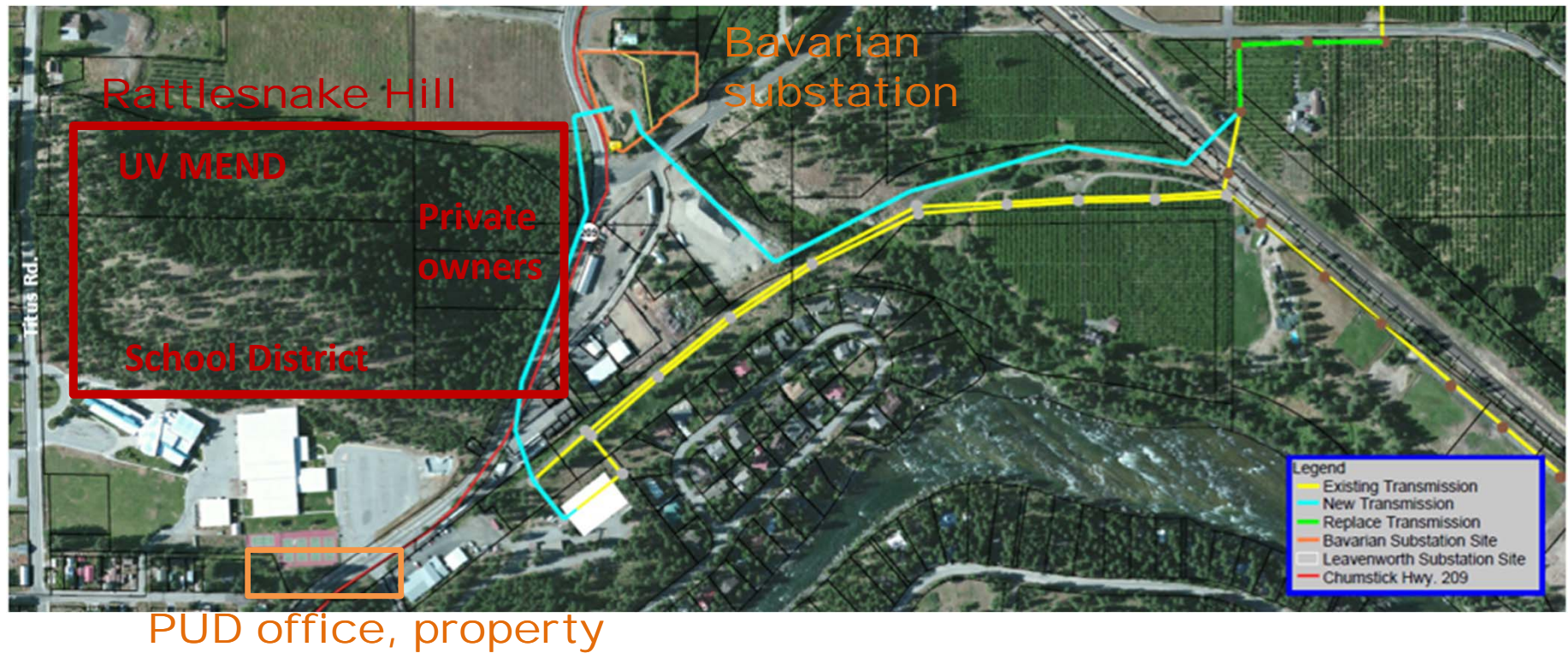


# Distribution Undergrounding Revisit

- Existing FM policy
- Vegetation risks and costs increasing
- Forest health challenges
- ROW challenges
- Fire ignition concerns
- District Defined Qualifiers
  - Agency defined fire risk areas
  - Constructability
  - Cost/benefit
  - Risk reduction



# Opportunity: Rattlesnake Hill







# Exploring Public Safety Protocols

Researching examples and lessons learned to plan for extreme fire weather events