



Upper Valley Transmission Outreach

Rachel Hansen, communications
Steve Wickel, interim director of transmission
Dec. 5, 2022



Why we're here today

- Outreach summary
- Feedback received
- Review of alternative plans
- Next steps

Board action requested

YOU'RE INVITED!

Chelan PUD Informational Drop-in Session



Learn more about an upcoming maintenance and fire-hardening project along the main transmission line between Peshastin and Plain. These improvements will:

- Rebuild wood structures in fire-resistant steel as needed
- Replace aging equipment, including conductor wire
- Improve reliability with switching improvements at Coles Corner substation
- Occur within existing utility easements

CHECK OUT THE PLAN:

chelanpud.org/uppervalleytransmission

Questions? Contact us at customeroutreach@chelanpud.org

Let's talk



Friday, Nov. 4, 3-6 p.m.
Leavenworth PUD auditorium
222 Chumstick Highway

Thursday, Nov. 10, 2:30-5 p.m.
Beaver Valley Lodge
18630 Beaver Valley Road

Mailer summary

Postcard mailed to 2,929 households on Oct. 27

Emailed an electronic version of the postcard to 2,459 customers, 50 percent open rate

Website:

- Service Center
- Fifth Street Redevelopment
- Scam Calls
- In Your Neighborhood
- Growth Forecasting
- Rocky Reach Discovery Center
- Public Power Benefit Program
- Building a Brighter Future
- Lights On
- Advanced Meters
- Wildfire Mitigation Program

[Home](#) / [Learning Center](#) / [In Your Neighborhood](#) / [Upper Valley Transmission Improvements](#)

Upper Valley Transmission Improvements

Chelan PUD is planning a series of improvements along the main transmission line that delivers electricity to Plain, Lake Wenatchee and Stevens Pass. These improvements will:

- Rebuild wood structures in fire-resistant steel as needed
- Replace aging equipment, including conductor wire
- Improve reliability with switching improvements at Coles Corner substation

Improvements are planned along a 16-mile portion of transmission line that runs from Anderson Canyon in Peshastin to Sunitsch Canyon and from Winton to Coles Corner (see map below). The project footprint stays within existing utility easements. The plan also includes replacing wooden transmission poles with fire-resistant steel along an existing 2-mile section over Natapoc Ridge to Plain. In 2019, the PUD presented [two alternatives](#) to the public. Based on customer-owner feedback, a third alternative was developed which achieves maintenance and fire-resiliency goals while staying within existing utility easements.

For more details, here's a [presentation](#) about the project heard by the PUD Board of Commissioners meeting on Oct. 17, 2022.

Chelan PUD is budgeting for further engineering and design work in 2023. Construction is tentatively planned for 2024 and 2025.

We welcome your questions and comments [HERE](#)

Informal drop-in sessions:

Friday, Nov. 4, 3-6 p.m.,
Leavenworth PUD auditorium,
[222 Chumstick Highway](#)

Thursday, Nov. 10, 2:30-5 p.m.,
Beaver Valley Lodge, [18630
Beaver Valley Road](#)

[Sign up for email updates](#)





Feedback

Nov. 4 drop-in session, 3:30-6 p.m.

Leavenworth

- Attendance: 1 elected official, 2 customer-owners
- Concern about aesthetics of galvanized steel poles
- Confusion with transmission lines related to Bavarian substation
- Question about access roads to perform the work

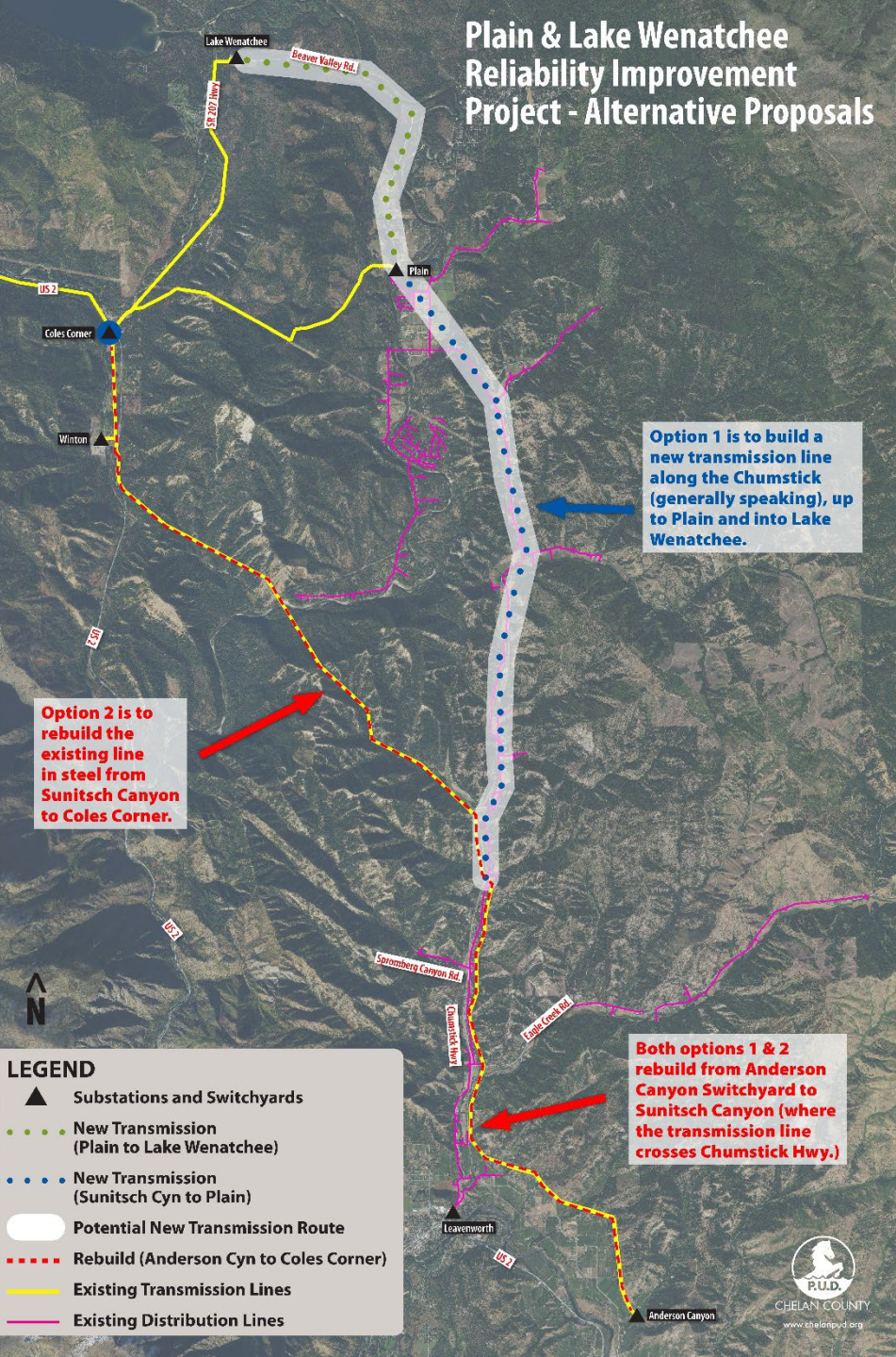


Feedback

**Nov. 10 drop-in session, 2:30-5 p.m.
Plain**

- Attendance: 1, had no concerns

Plain & Lake Wenatchee Reliability Improvement Project - Alternative Proposals



Summary of 2019 proposals

Alt. 1 – Chumstick

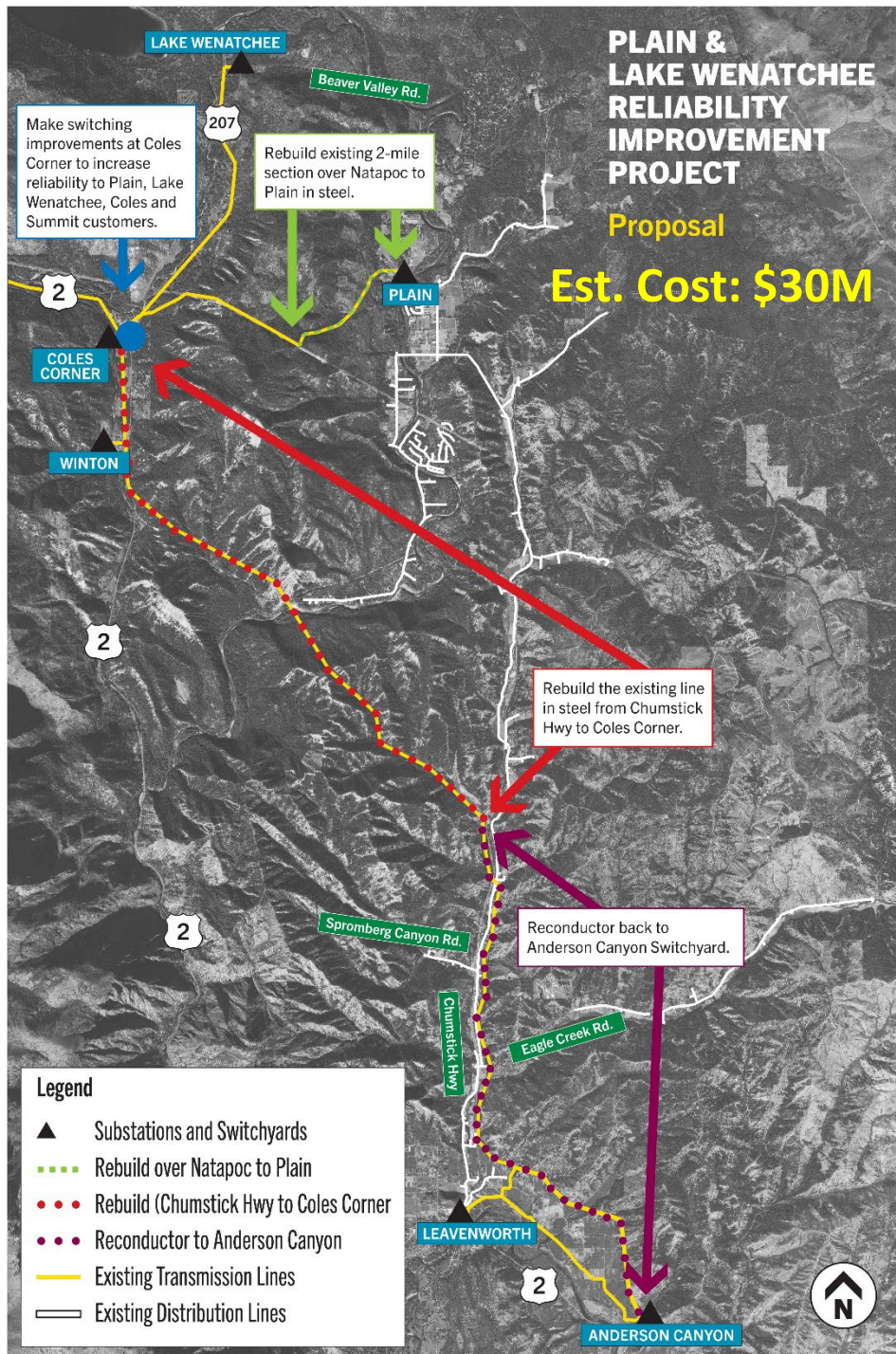
- New alignment
- Steel construction for the entire route
- Looped power supply to all substations
- Estimated Cost: \$40-\$60M (in 2019)
- District preferred option

2019 Customer feedback: Concerns about impact to private property values, aesthetics, cost

Alt. 2 – Existing alignment

- Remain in the existing alignment
- Steel construction for the entire route
- Build a ring-bus at Coles Corner
- Estimated Cost: \$40-\$60M (in 2019)

2019 Customer feedback: Concerns about cost



Alt. 3 – Existing alignment hybrid

- Remain in the existing alignment
- Reconductor from Anderson Canyon to Chumstick Hwy.
- Steel construction through Sunitsch and Deadhorse canyons to Coles Corner
- Make switching improvements to Coles Corner
- Rebuild approximately 2 miles of the Plain Tap with steel poles
- Preferred alternative with stakeholders

Estimated cost: \$30M

Alt. 4 - Do nothing

- Continue existing maintenance regiment
- Does not achieve fire resilience, capacity or reliability improvements

Next steps

Board action: Request approval of alternative 3 for the Plain and Lake Wenatchee Resiliency project

Design and permitting: 2023 – 2024

Construction: 2024 - 2027

Explore federal grant funding opportunities

Proposed motion:

Move that considering the public outreach and input received, we direct staff to move forward with design and implementation of Alternative 3 for the Plain and Lake Wenatchee Resiliency project.