

The background of the slide is a photograph of a forested hillside. In the foreground, a wooden power line tower is visible, with several insulators and wires attached. The tower has some yellow markings on it. The hillside is covered in dense green trees and shrubs. The sky is not visible.

Upper Valley Transmission Outreach

Rachel Hansen, communications
Steve Wickel, interim director of transmission
Oct. 17, 2022

Why we're here

- Project background
- Fire Resilience
- Maintenance needed
- New project alternative
- Outreach
- Next steps

Information only, no Board action



History of McKenzie-Beverly



University of Washington photo

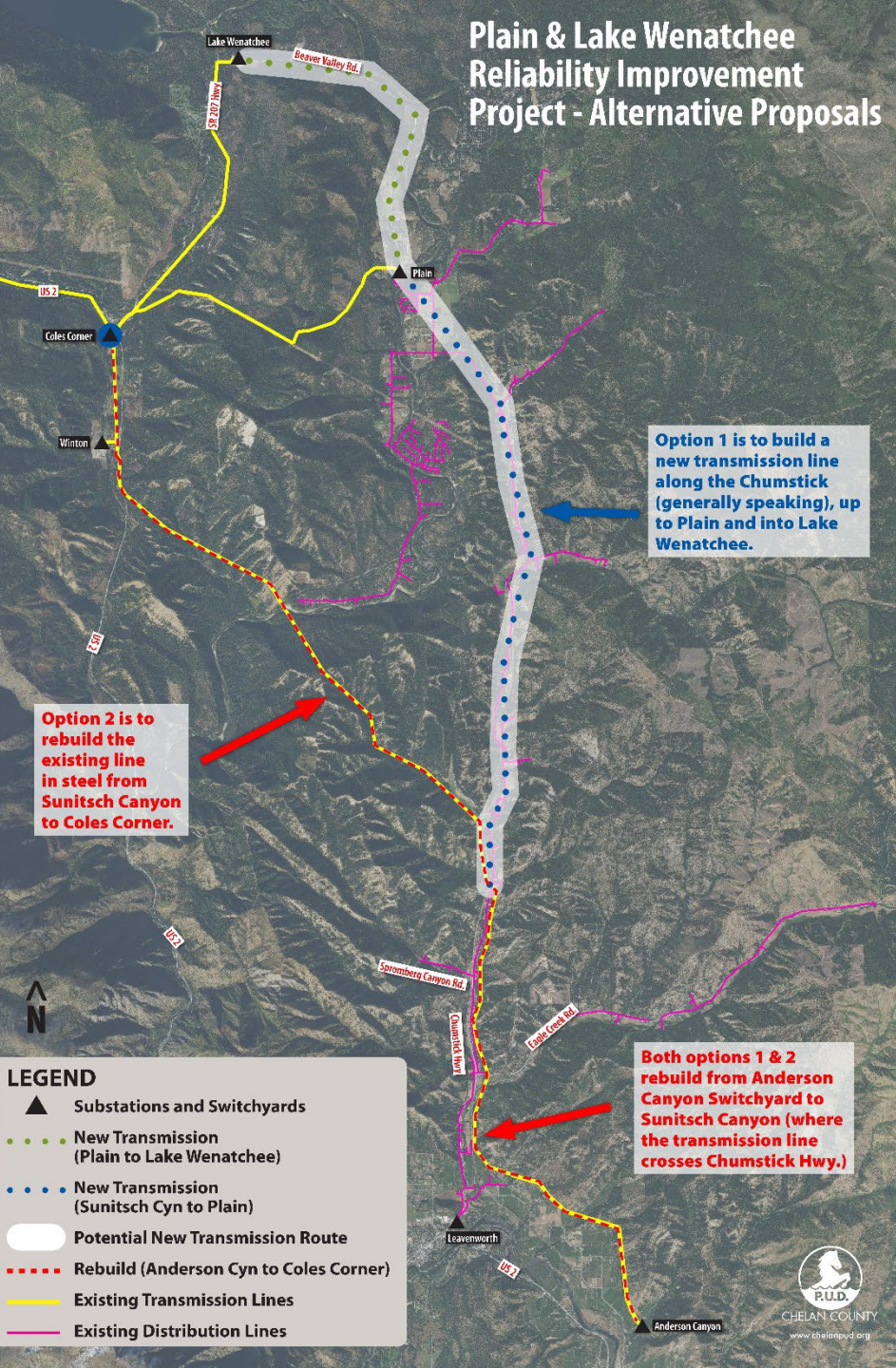
- Constructed in 1920s, Chelan PUD owned and maintained since 1948
- Area of focus: 16 miles between Peshastin and Coles Corner
- 2001: PUD investigates line improvements and reroute, pauses project based on public feedback
- 2015: Strategic Plan indicates customer support for replacing or rerouting transmission lines to protect against fire / weather risks
- 2017: HDR Wildfire Risk Assessment
- 2019: PUD collects feedback on two proposals, pauses project based on public feedback



What's needed

- Fire-hardening: Steel poles
- Replacement of aging equipment
- Equipment upgrades to increase capacity
- Switching improvements to increase reliability

Plain & Lake Wenatchee Reliability Improvement Project - Alternative Proposals



2019 Outreach Effort

Alternative 1 – Chumstick

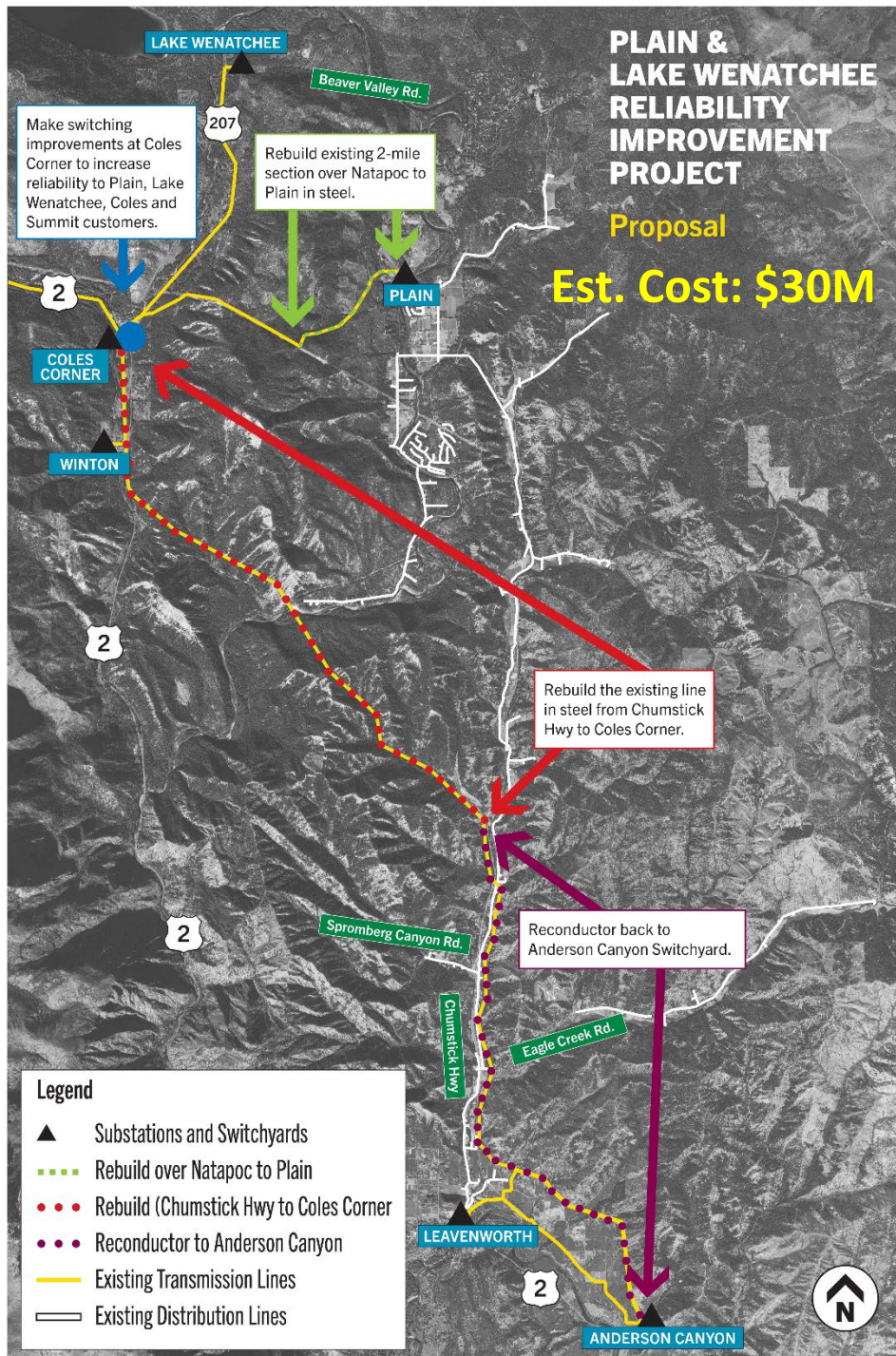
- Rebuild/harden existing line from Anderson Canyon to Chumstick Hwy.
- Relocate transmission line out of Sunitsch and Deadhorse canyons, proposed option along Chumstick Hwy.
- Build new transmission line between Plain and Lake Wenatchee subs, creating loop
- Customer feedback: Concerns about impact to private property values, aesthetics, cost

Estimated Cost: \$40-\$60M (in 2019)

Alt. 2 – Existing alignment

- Rebuild/harden existing line from Anderson Canyon to Chumstick Hwy.
- Rebuild transmission line in its existing alignment through Sunitsch and Deadhorse canyons
- Rebuild existing Plain tap
- Build a ring-bus at Coles Corner
- Customer feedback: Concerns about cost

Estimated Cost: \$40-\$60M (in 2019)



NEW Alternative 3

Developed based on public feedback

- Reconductor existing line from Anderson Canyon to Chumstick Hwy.
 - Some poles will be replaced with steel as needed
 - Achieves increased capacity
- Rebuild transmission line using steel poles in its existing alignment through Sunitsch and Deadhorse canyons to Coles Corner
 - Achieves fire resilience
- Make switching improvements to Coles Corner
 - Achieves improved reliability
- Rebuild approximately 2 miles of the Plain Tap with steel poles
 - Achieves fire resilience

All improvements are within existing utility easements

Estimated Cost: \$30M

Remaining Option: Do nothing

- Continue existing maintenance regiment

Recommended Outreach Activities

Objectives of planned outreach: *What information does staff want to gain through public outreach?*

- Understand level of stakeholder support for improvements outlined in Alternative 3
- Identify additional community concerns or ideas

Outreach Activities:

1. Mailer to all stakeholders intended to:
 - Provide high-level information about proposed project
 - Drive readers to our webpage for more information, to stay informed and provide feedback
2. Host drop-in sessions to provide an opportunity for stakeholders to:
 - Understand project background and current proposed alternative
 - Get questions answered by PUD staff
 - Express support or concern for the project



Next steps

- Outreach: October-November
- Board decision: After public outreach
- Design: Budgeted for 2023
- Construction: 2024 and 2025