

Upper Valley Utility Focus

Chad Rissman
Bill Sanborn



Areas of Focus

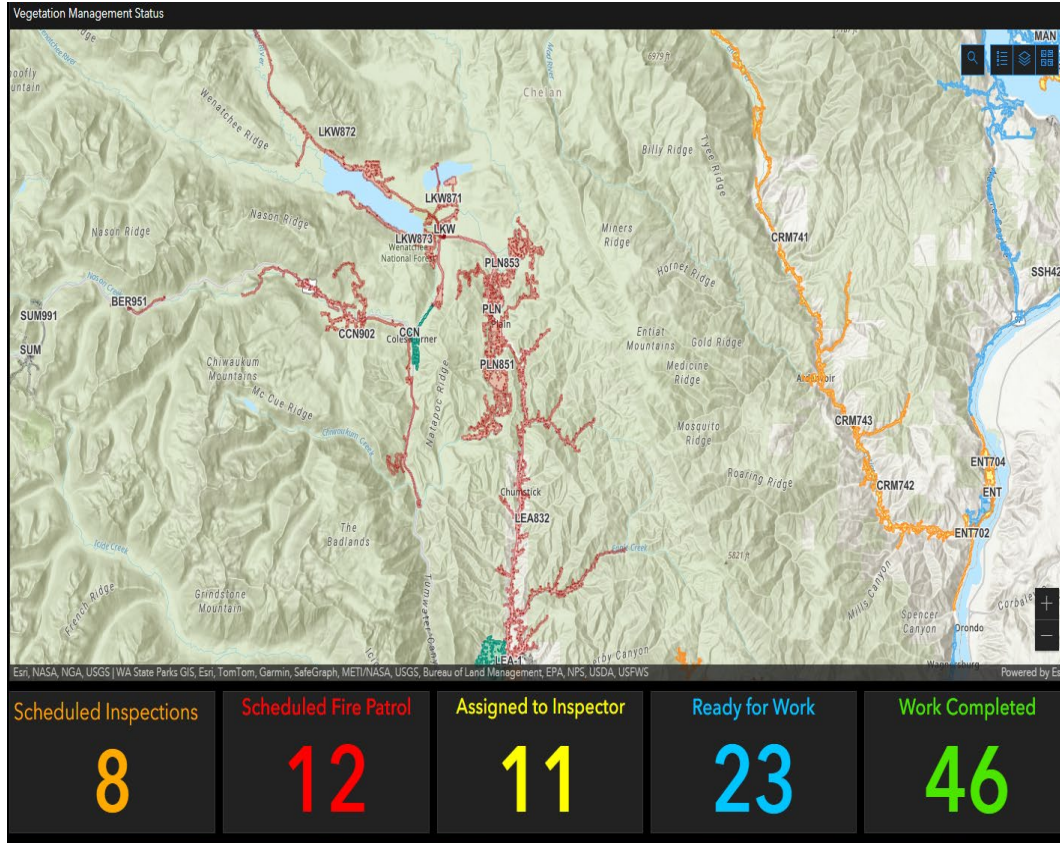
- Wildfire mitigation
- Building capacity for growth
- Fiber/broadband access
- Aging infrastructure
- Reliability and quality improvements

Advancing projects that combine all of the above

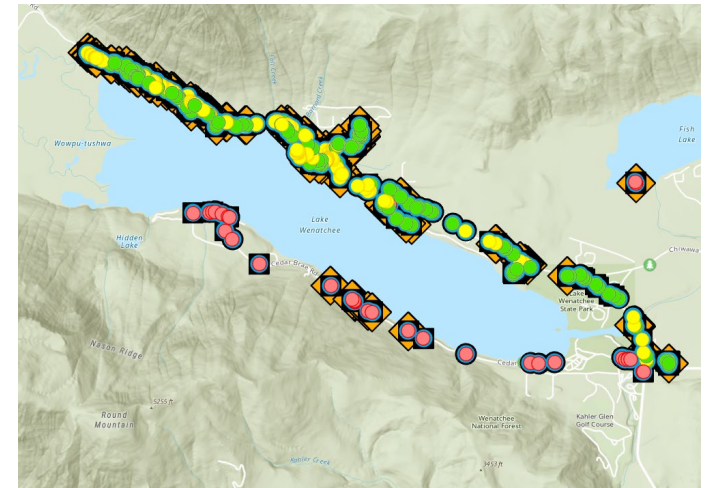
Comprehensive Approaches

1. Enhanced vegetation management
2. Conversions from overhead to underground
3. Balancing reliability and fire risk
4. Reliability (Circuit sectionalizing)
5. Asset refurbishment and replacement
6. Leverage & combine fiber/broadband builds

Enhanced Vegetation Management



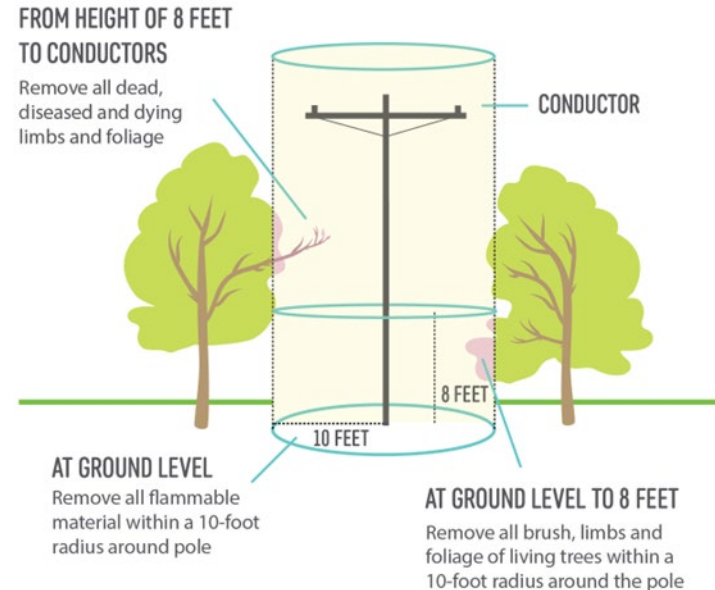
- Work management dashboard
- Tree inspection GIS points
- Prune and removals (4,2,1)
- Community partners
 - Cascadia (private forest)
 - Matching PUD investment



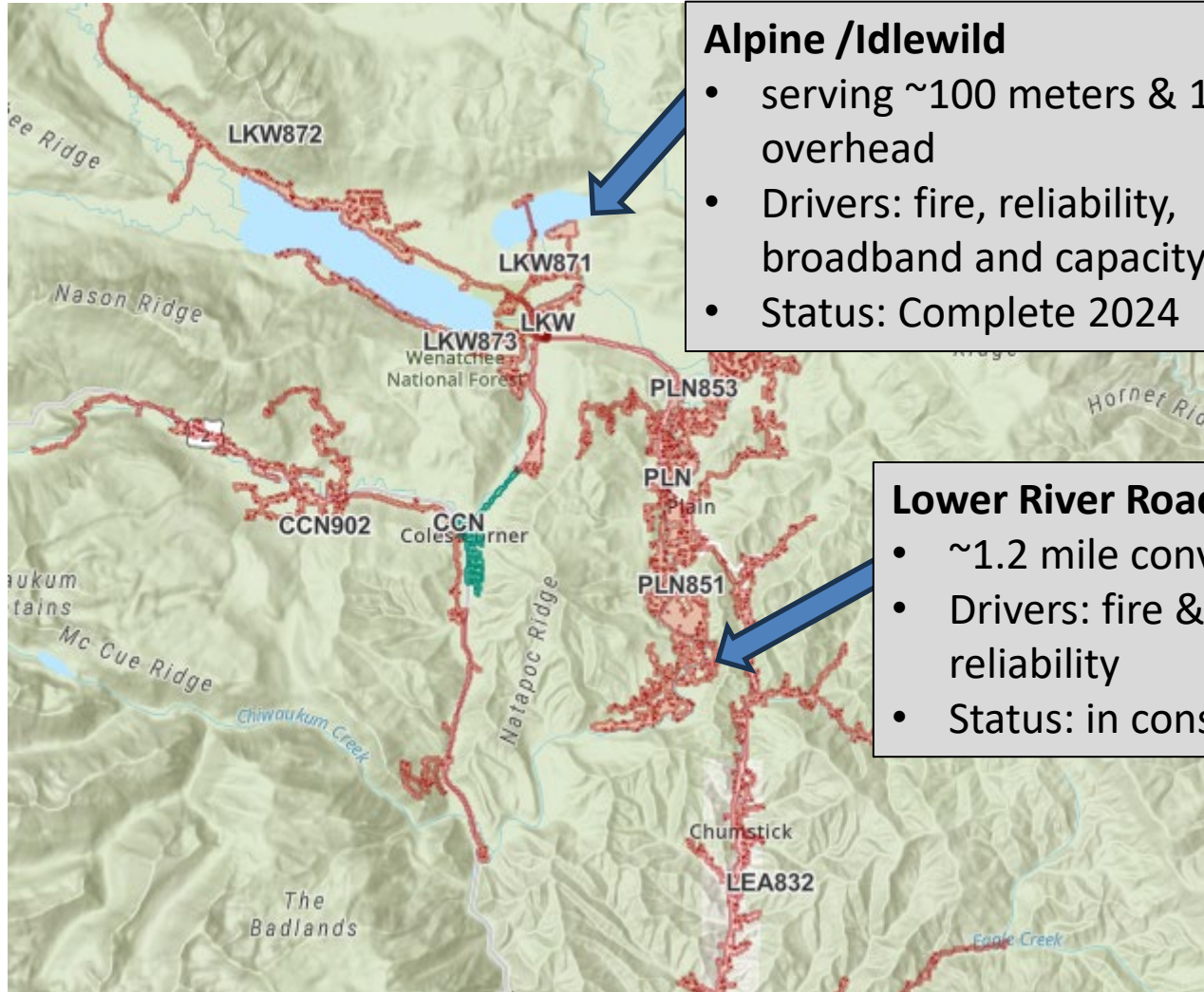
Enhanced Vegetation Management (cont.)



- Pole clearing
 - 10 ft. radius pole base
- Reduce combustible fuels
- Reducing spark emitting devices



Conversions to Underground



Alpine /Idlewild

- serving ~100 meters & 1 mile of overhead
- Drivers: fire, reliability, broadband and capacity
- Status: Complete 2024

Lower River Road

- ~1.2 mile conversion
- Drivers: fire & reliability
- Status: in construction

Automation

- Fire mitigation
- Reliability
- Utilizes fiber optic system

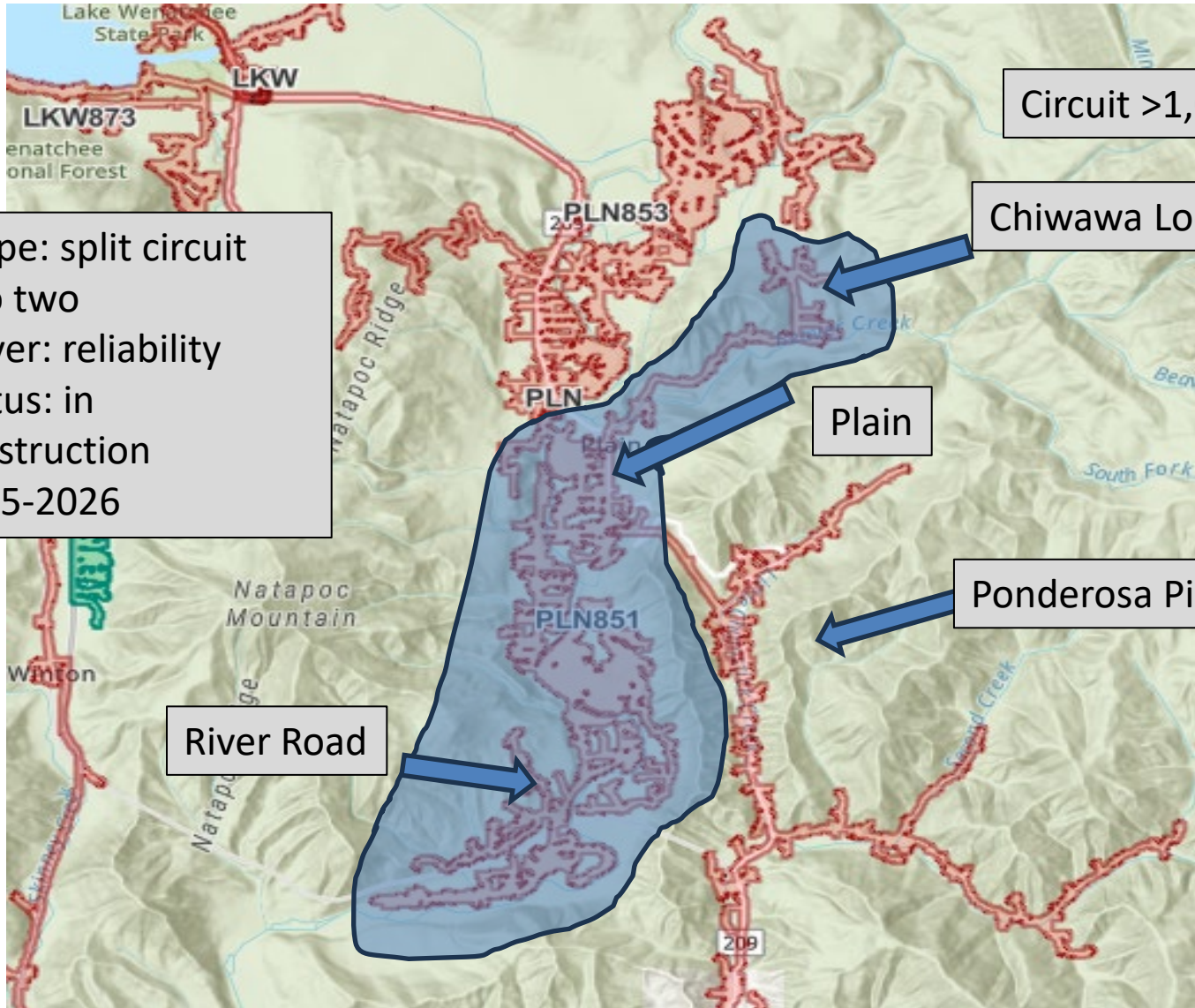


Protection Automation Status		ON 3	Heartbeat		?	
Protection Area	Automation Status 2	Supervisory Status 4	Reclosing Status 7	Fuse Saving	5 Recommended Protection Tier	6 Implemented Protection Tier
Upper Valley	ON 2	4	7			Protection Tier
LEA SW 12140	ON	Remote	Auto	Enabled	3-Enhanced	3-Enhanced
LW 3-871	ON	Remote	Auto	Enabled	3-Enhanced	3-Enhanced
LW SW 2145	ON	Remote	Auto	Enabled	3-Enhanced	3-Enhanced
LW 3-872	ON	Remote	Auto	Enabled	3-Enhanced	3-Enhanced
LW SW 2158	ON	Remote	Auto	Enabled	3-Enhanced	3-Enhanced
LW SW 2176	ON	Remote	Auto	Enabled	3-Enhanced	3-Enhanced
LW 3-873	ON	Remote	Auto	Enabled	3-Enhanced	3-Enhanced
PLN 3-851	ON	Remote	Auto	Enabled	3-Enhanced	3-Enhanced
PLN SW 2505	ON	Remote	Auto	Enabled	3-Enhanced	3-Enhanced
PLN 3-852	ON 1	Remote	Auto	Enabled	3-Enhanced	3-Enhanced
PLN 3-853	ON	Remote	Auto	Enabled	3-Enhanced	3-Enhanced
PLN SW 2126	ON	Remote	Auto	Enabled	3-Enhanced	3-Enhanced



Circuit Sectionalizing

- Scope: split circuit into two
- Driver: reliability
- Status: in construction 2025-2026

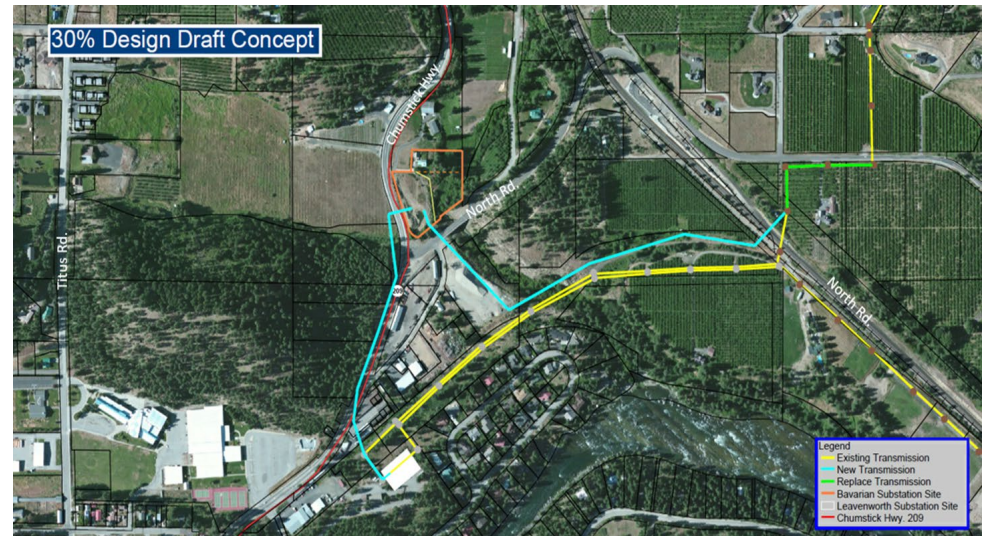


Bavarian Substation

Update

- Permitting
- Major equipment procurement
- Moved construction out to 2026 to further collaborate with tribal interests
- Project is expected to be ~\$10 million
- Transmission component

North Road & Chumstick hwy

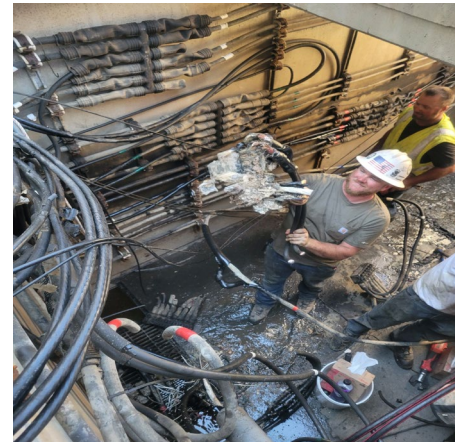
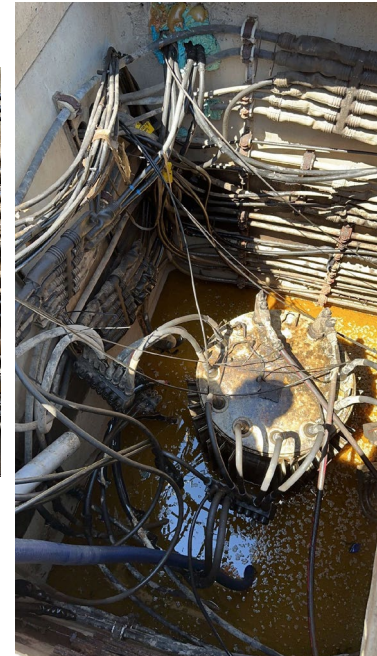
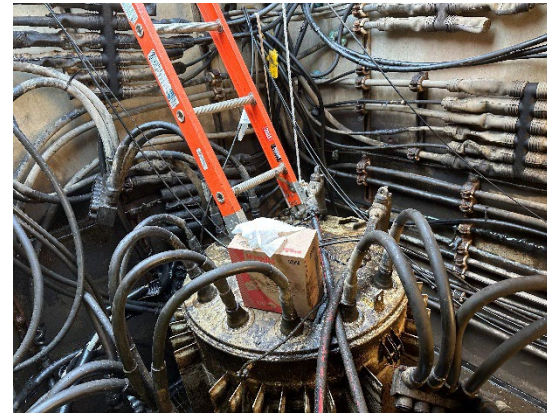


Asset Refurbishment

Plain Substation - 2024



Leavenworth Alley – 2024 & 5



Longer Range Planning

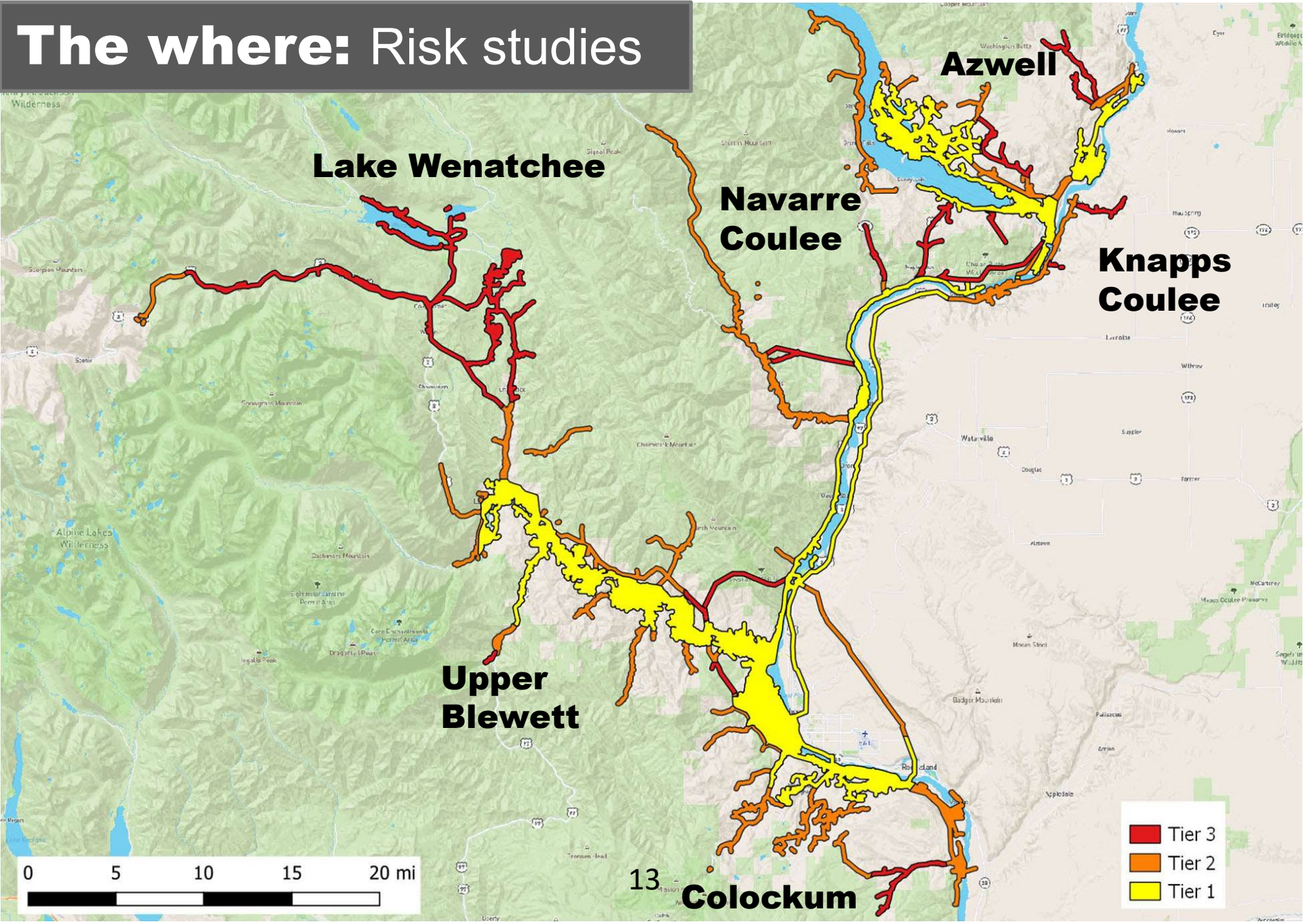
- Deadhorse and Sunitsch Canyon line rebuild
 - Reliability, fire resiliency, aging infrastructure
 - Some right-of-way expansion and prep 2025/26
 - Line rebuild planned for 2027/28
- Coles Corner Switchyard
 - Reliability, aging infrastructure
 - Design 2026
 - Construction 2027/28
- Evaluating additional overhead conversions

Questions?

Learn more at [chelanpud.org/psps](https://www.chelanpud.org/psps)

Customers can send their questions to
<https://www.chelanpud.org/learning-center/wildfire-mitigation-program> or contactus@chelanpud.org

The where: Risk studies



Equipment upgrades

Targeted wildlife guarding

Faster fault detection with more indicators

Remote system control and data acquisition (SCADA) technology to increase reliability in fire-prone areas

