



# Summer Reservoir Readiness

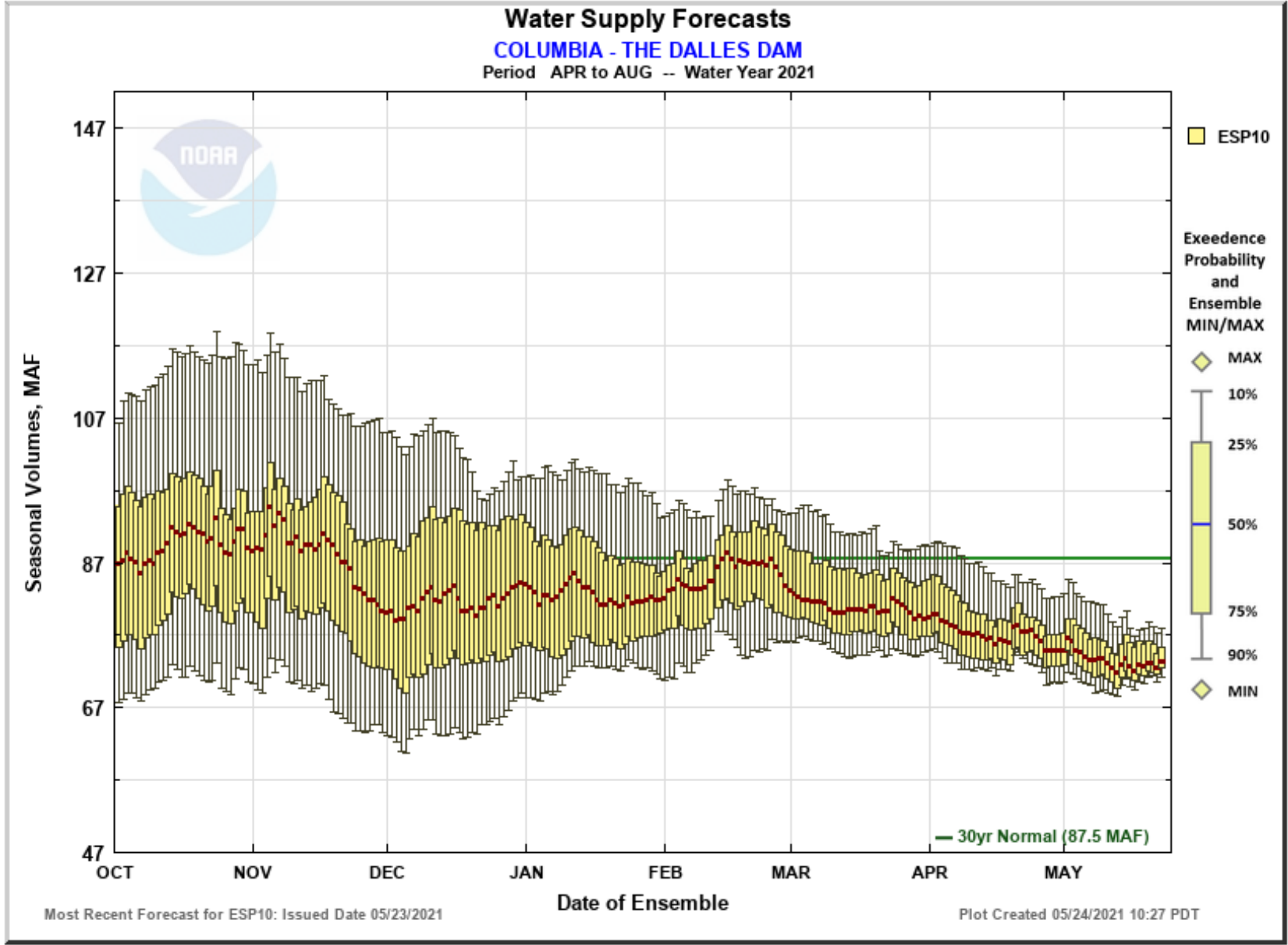
Potential Impacts  
on Reservoir Levels



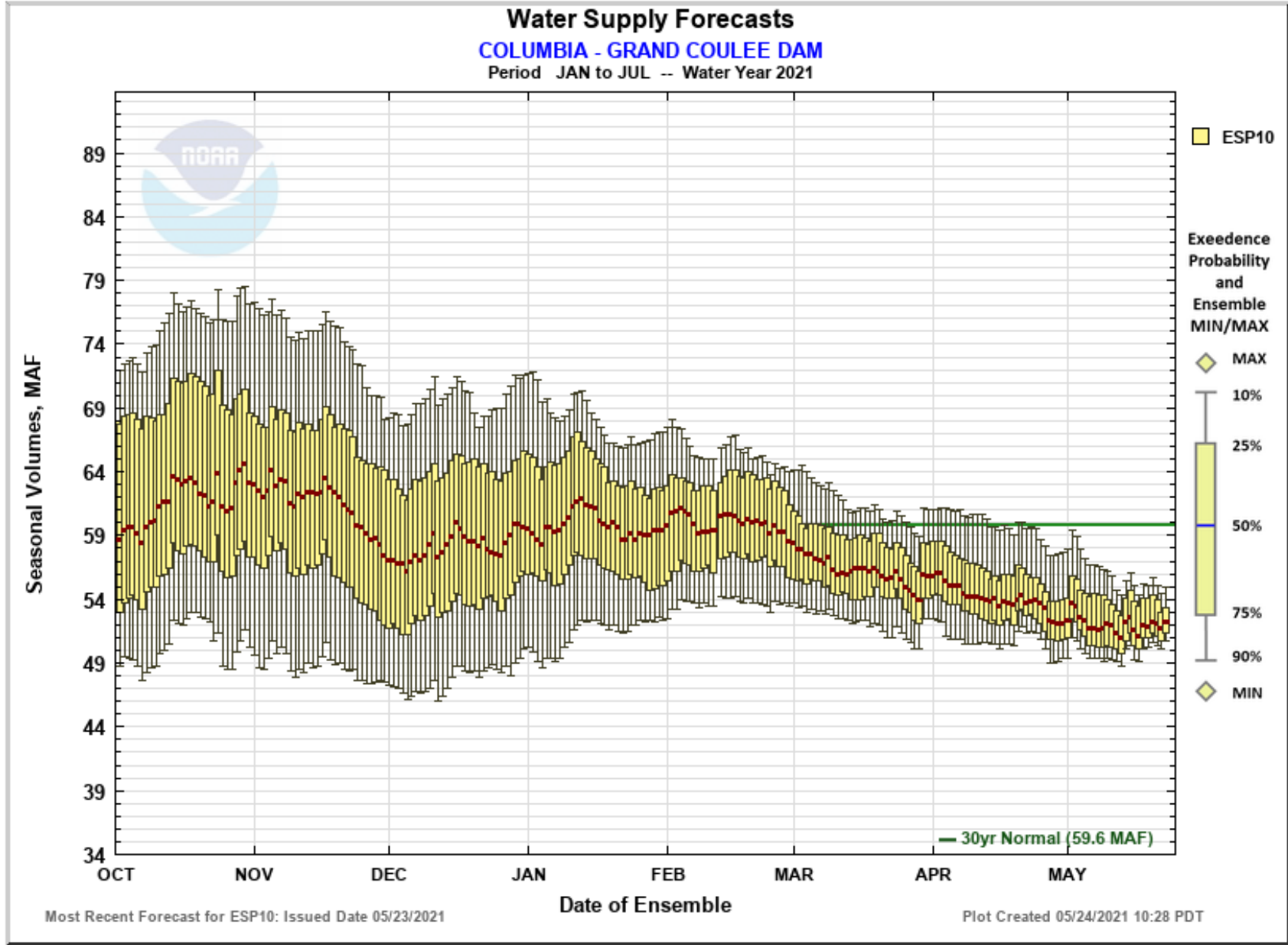
## Why We're Here Today

- Northwest dry spell and runoff volumes
- Westwide hydro conditions
- Energy scarcity and capacity shortfalls
- Reservoir operations
- Communications/Outreach

The Dalles  
84% of  
Average



Grand Coulee 87% of Average

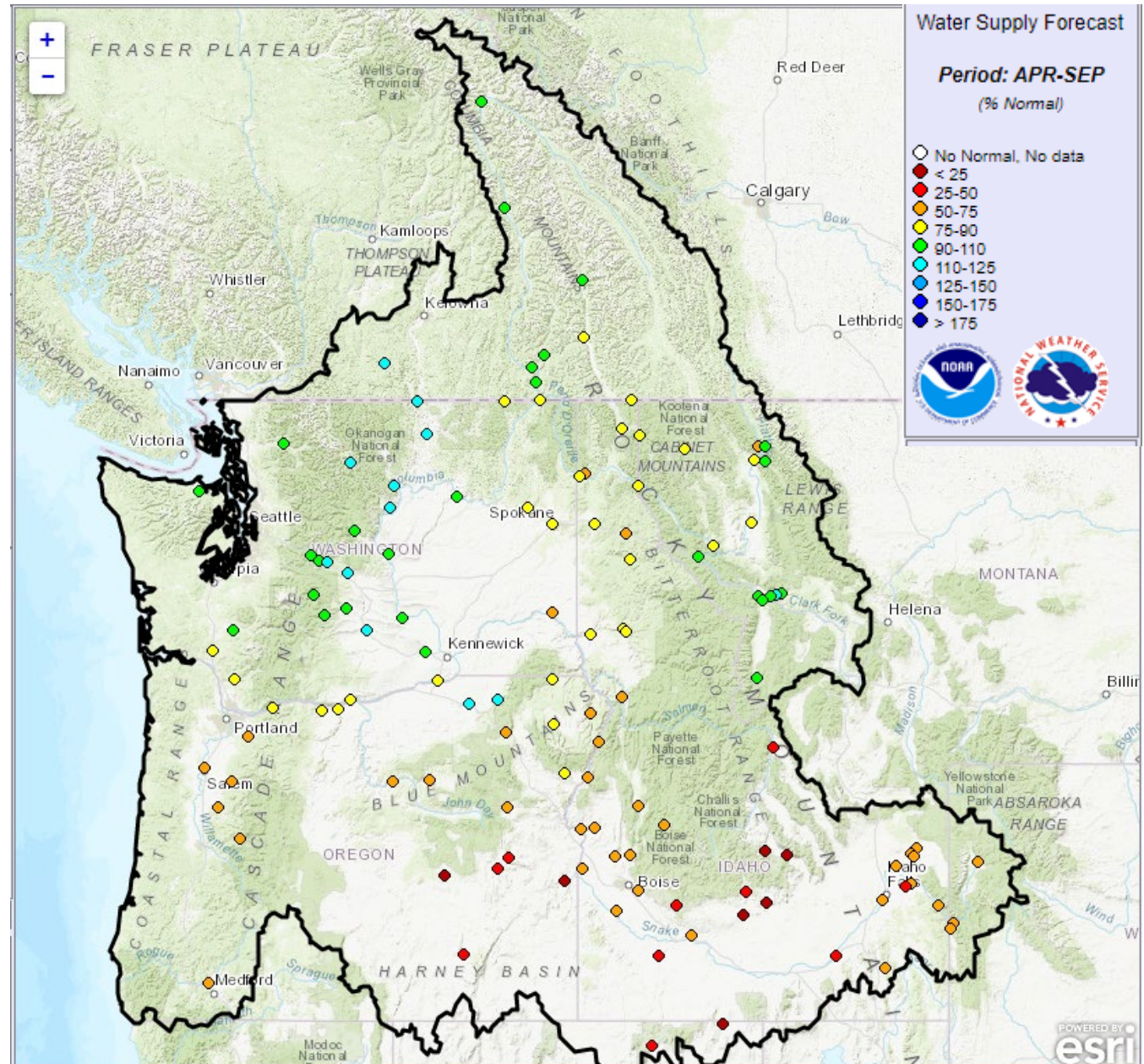




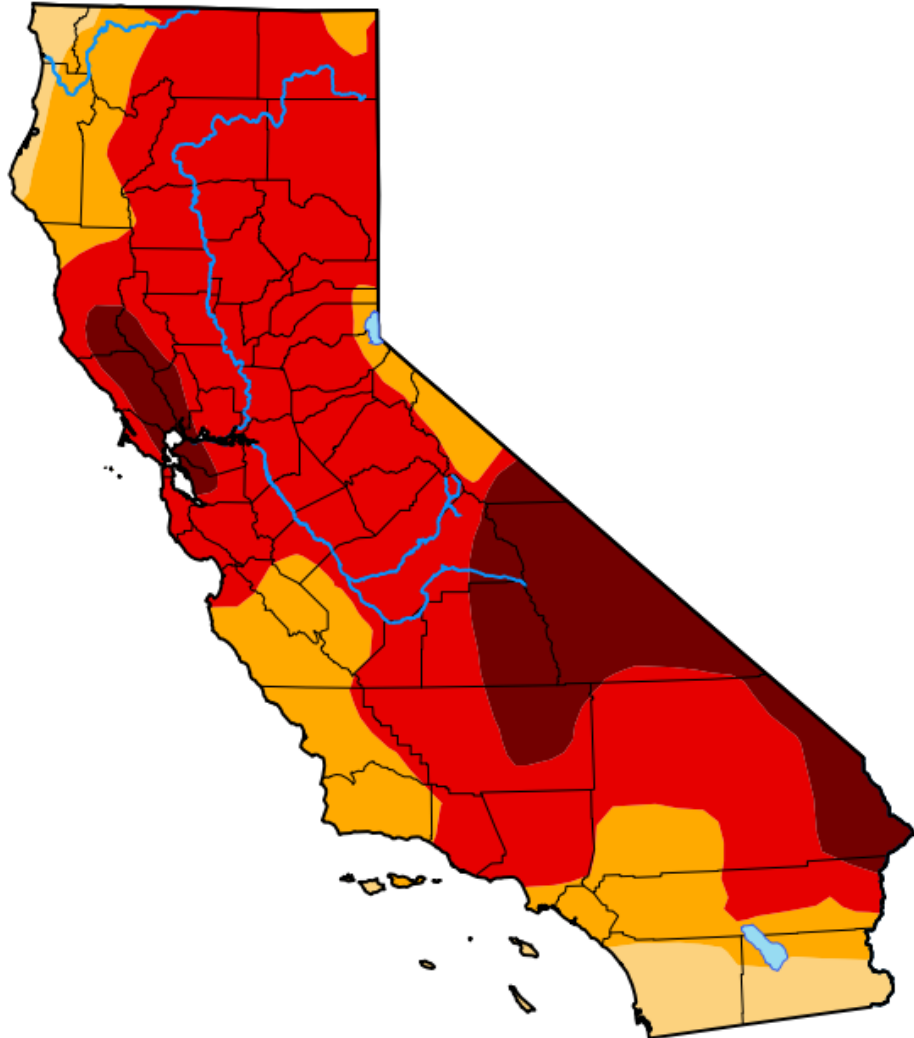
Southern half of  
Columbia Basin hits 3<sup>rd</sup>  
month of dry spell.

4<sup>th</sup> driest March and  
April for Washington

# NW Water Supply % of normal runoff



# U.S. Drought Monitor California



**May 18, 2021**  
 (Released Thursday, May. 20, 2021)  
 Valid 8 a.m. EDT

Drought Conditions (Percent Area)

	None	D0-D4	D1-D4	D2-D4	D3-D4	D4
<b>Current</b>	0.00	100.00	100.00	94.31	73.33	15.91
<b>Last Week</b> <i>05-11-2021</i>	0.00	100.00	100.00	94.31	73.33	13.53
<b>3 Months Ago</b> <i>02-16-2021</i>	0.70	99.30	84.88	57.58	30.99	3.75
<b>Start of Calendar Year</b> <i>12-29-2020</i>	0.00	100.00	95.17	74.34	33.75	1.19
<b>Start of Water Year</b> <i>09-29-2020</i>	15.35	84.65	67.65	35.62	12.74	0.00
<b>One Year Ago</b> <i>05-19-2020</i>	41.80	58.20	46.67	20.84	2.97	0.00

Intensity:

- None
- D0 Abnormally Dry
- D1 Moderate Drought
- D2 Severe Drought
- D3 Extreme Drought
- D4 Exceptional Drought

*The Drought Monitor focuses on broad-scale conditions. Local conditions may vary. For more information on the Drought Monitor, go to <https://droughtmonitor.unl.edu/About.aspx>*

Author:  
 Adam Hartman  
 NOAA/NWS/NCEP/CPC



[droughtmonitor.unl.edu](https://droughtmonitor.unl.edu)

## CA Conditions

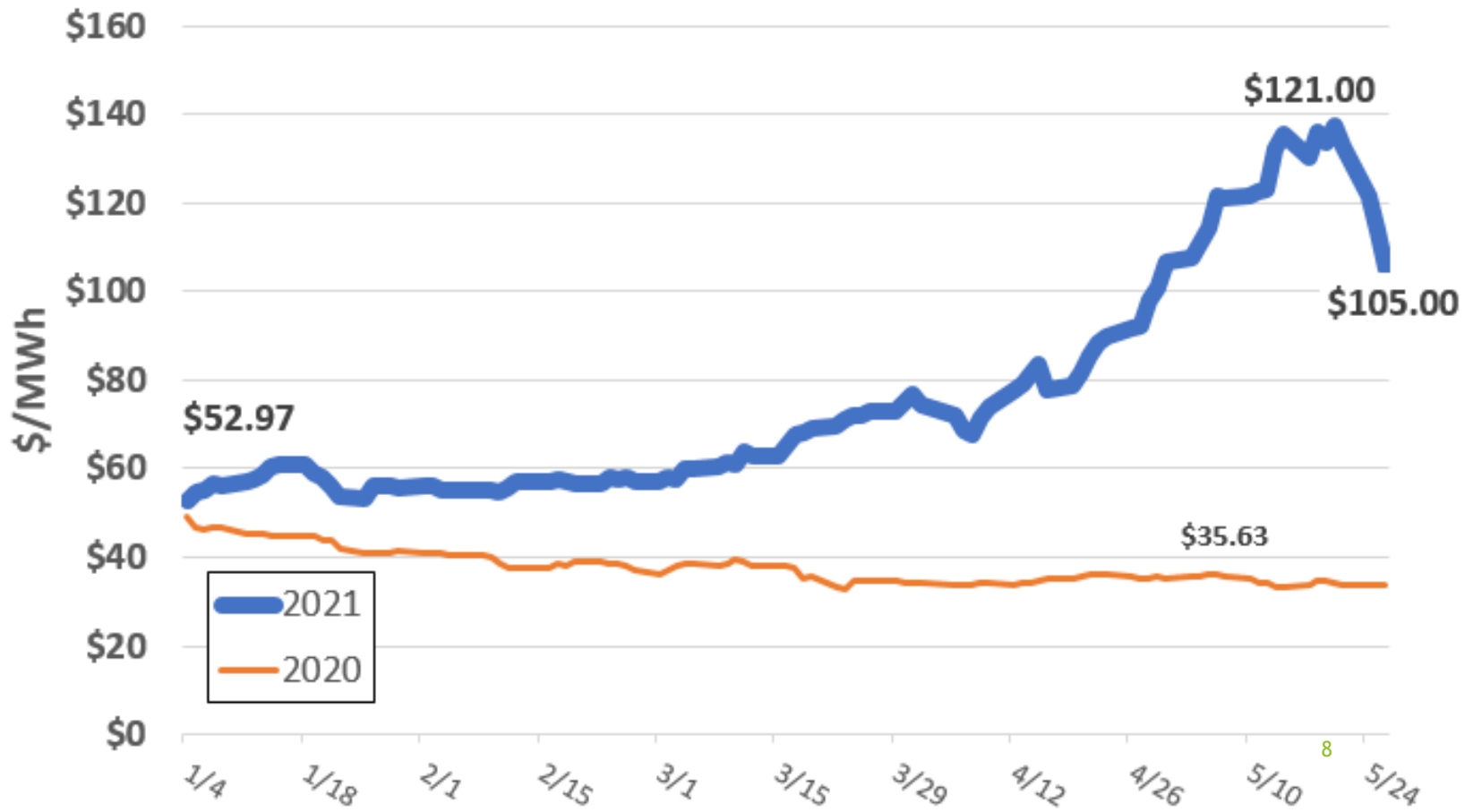
73% of CA in severe or extreme conditions

CA GOV extended emergency drought orders to 41 counties across state

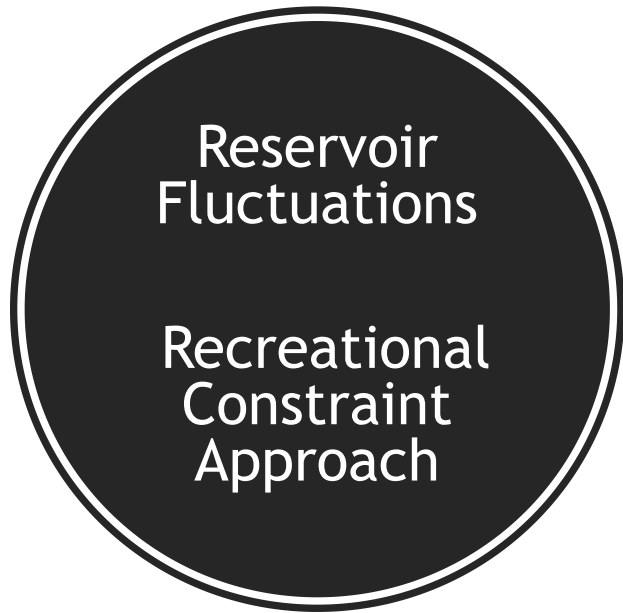


# SUMMER SQUEEZE

## Summer Peak MIDC Energy Price Q3







- Expecting more reservoir fluctuations
- Constraints may be placed on both hydro plants for weekends between July 15- Sept. 15\*
  - RR: 704.0 (1 ft higher than FERC license lower limit)
  - RI: 611.0 (2 ft higher than FERC license lower limit)
- Decision on constraints made prior day-ahead trading for Saturday and Sunday
- Decision to implement constraints based on flows, grid conditions, market conditions, hydraulic capability of project, storage likely to be used
- Was not used in 2020

*\*We will re-evaluate based on recreation, flow levels, and regional energy and capacity needs*

# You check the weather before going camping.

Shouldn't you check river and lake conditions before heading out on the water?

Know before you go. Get our Current app at [chelanpud.org/app](https://chelanpud.org/app)

## 2021 Communications/Outreach

- Connected customer newsletter - Current app, safety/preparedness messages
- Print ads - Foothills, visitors guides
- Radio Interviews - Safety/preparedness
- Video spots - Theaters, social media links
- Updated signage at boat ramps about Current app and safety



# Communications/Messaging

- River are dynamic and conditions can change rapidly
- We have tools for boaters/recreators - Current app, website river information and webcam at Riverfront launch
- Be mindful of potentially low water conditions
- Keep your eyes out on the water. If docking on shore, check conditions every few minutes
- Stay at least 400 feet away from dams on river, and reduce your wake within 100 yards from the shoreline

Download the *Current* app for Columbia River and Lake Chelan conditions



# Summary

- Low water supply in most parts of West
- Already seeing scarcity pricing for summer months
- Expecting reservoir fluctuations - monitor operations and associated customer/recreational user feedback
- Communications/Outreach
- Balancing stakeholder needs with Westwide energy and capacity shortage

