

Stehekin Generation Constraints *Challenges in Meeting Future Load Growth*

Jim White

August 11, 2020



CHELAN COUNTY
POWER

www.chelanpud.org



What is happening

- Situation
 - Increasing growth in Stehekin is leading to an increasing reliance on diesel generation
 - Peak demand nearing generating resources capacity
 - Estimated load growth is expected to outpace current energy supply between 2021 and 2027
- Two Challenges
 - Immediate need – meeting peak demand
 - Mid-term – meeting average energy needs

Stehekin Customer Base

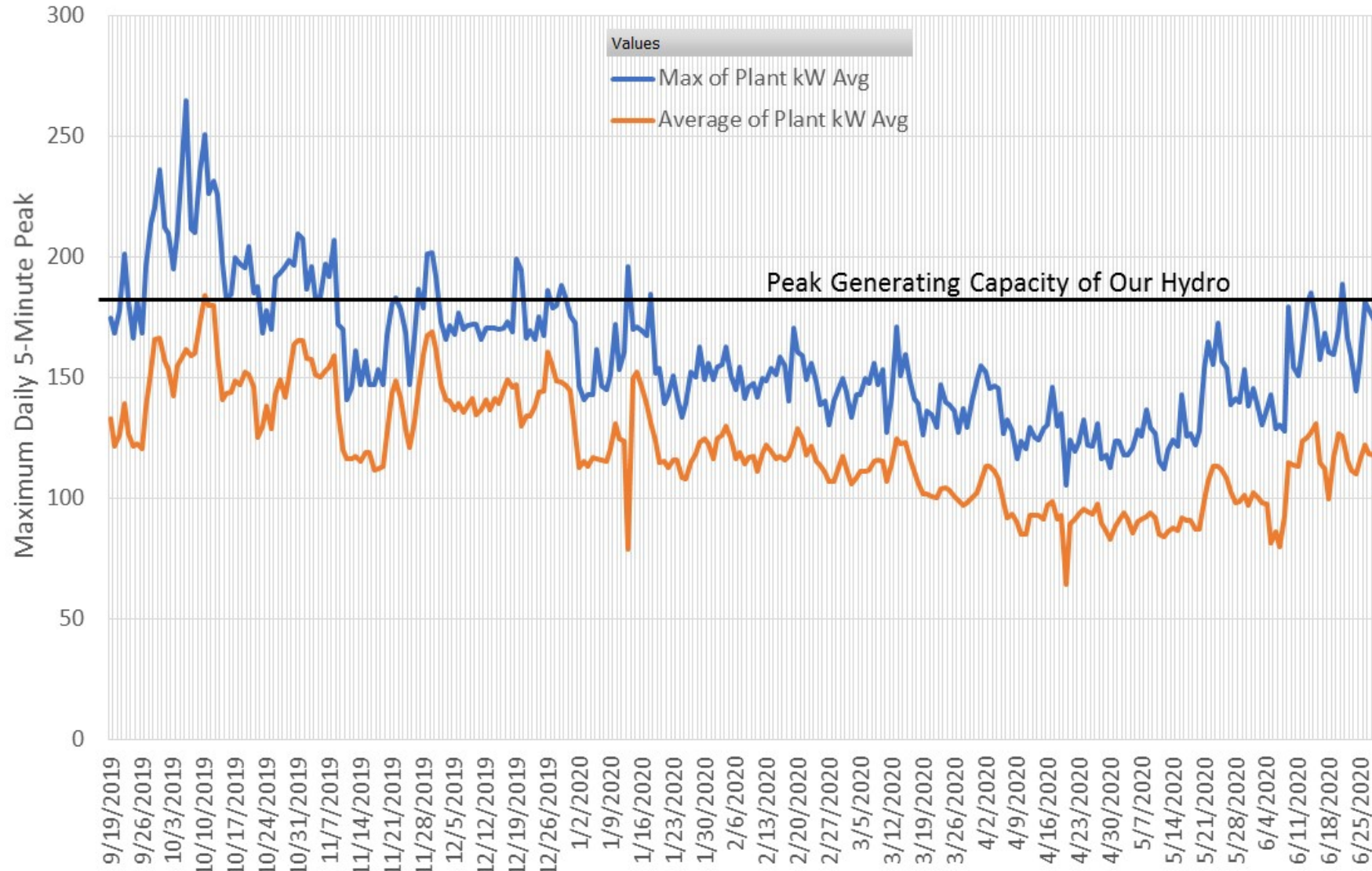


- National Park Service
- Lodge
- Restaurant
- Bakery
- Private Residences
- Seasonal Cabins
- Recreational



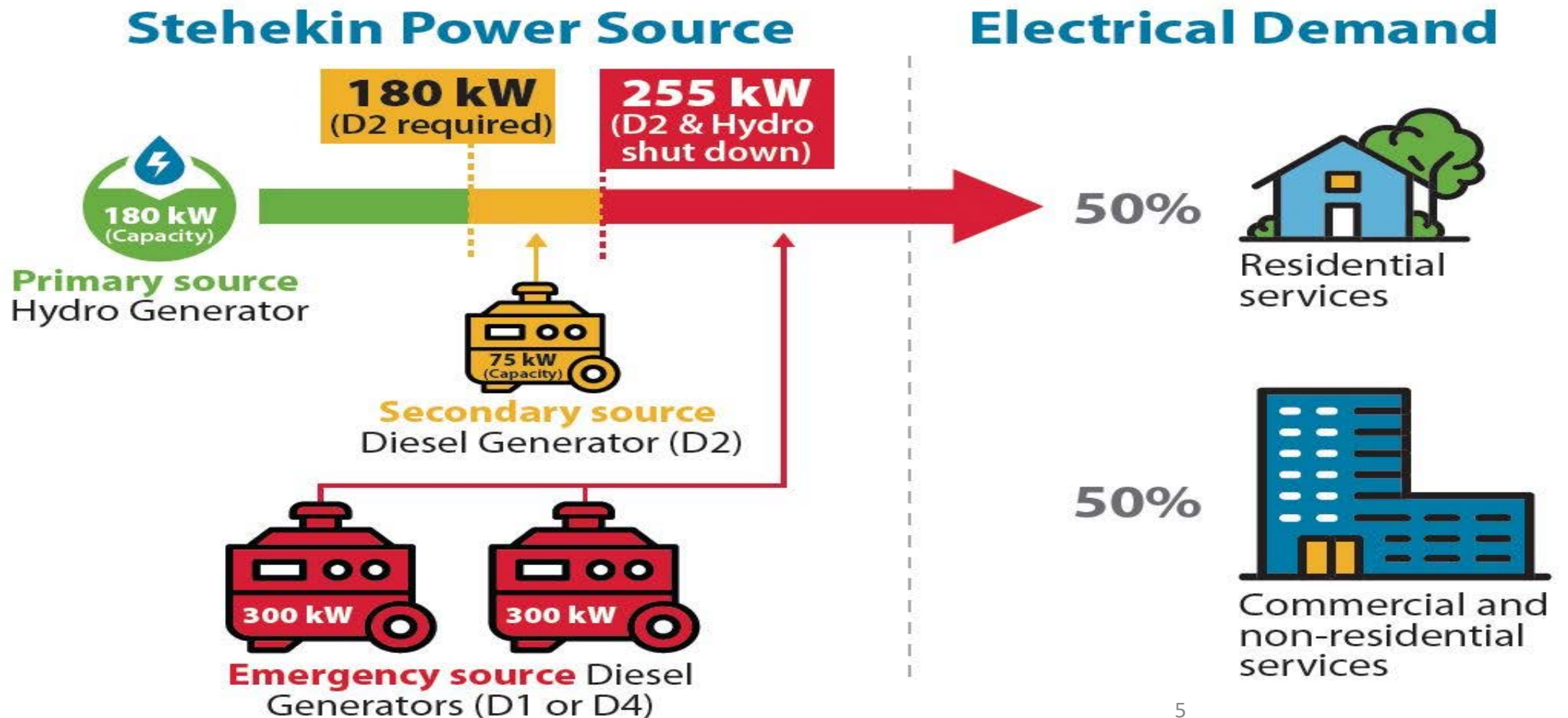
Max of Plant kW Avg Average of Plant kW Avg

Stehekin Daily Five Minute Peak and Average kW

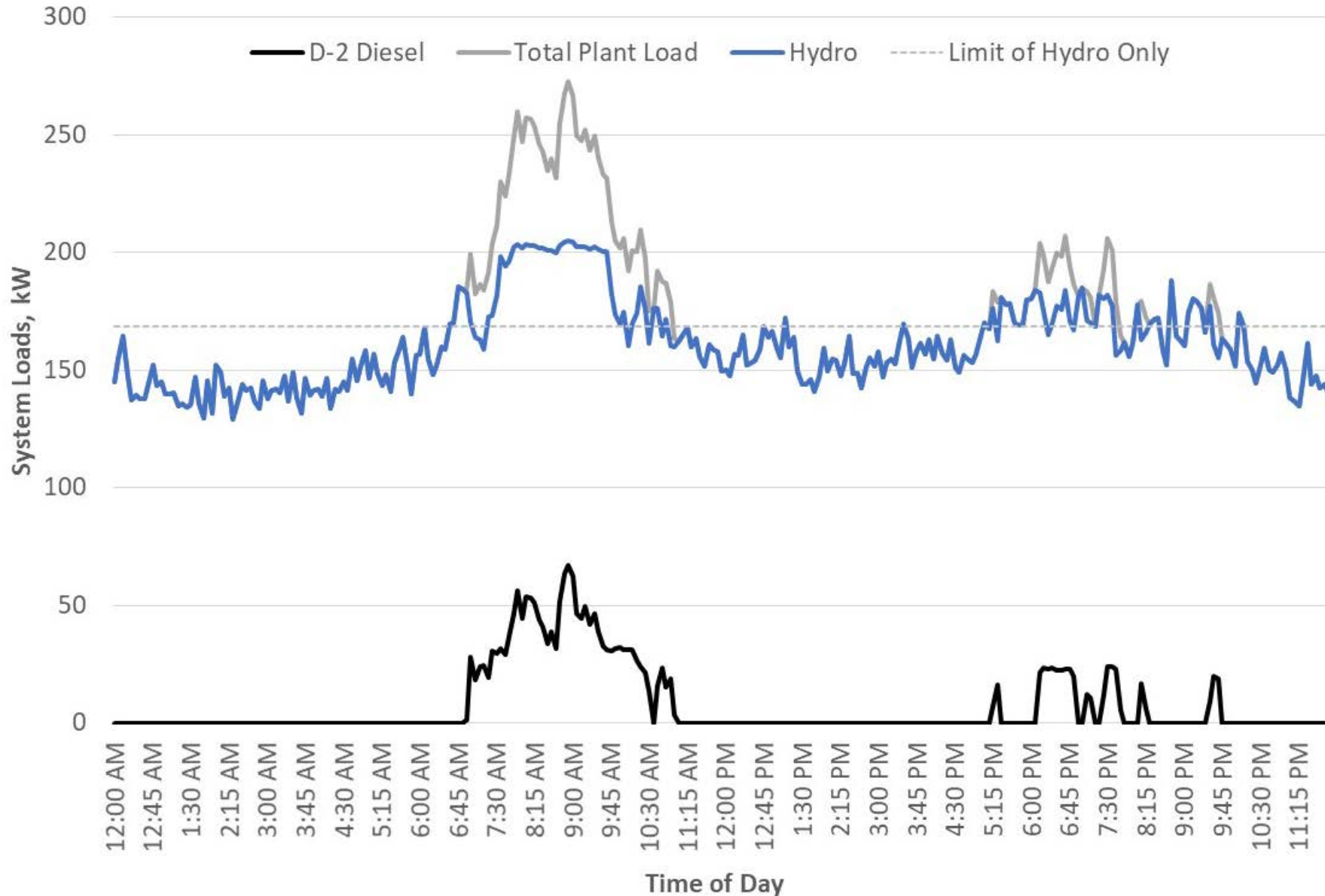


Date ▾

Generation Resources



Peak day resource profile



Conclusions

- Increasing loads are straining our limited generating capacity
- We are looking at a number of options, but
- There are no solutions that provide for uncontrolled growth