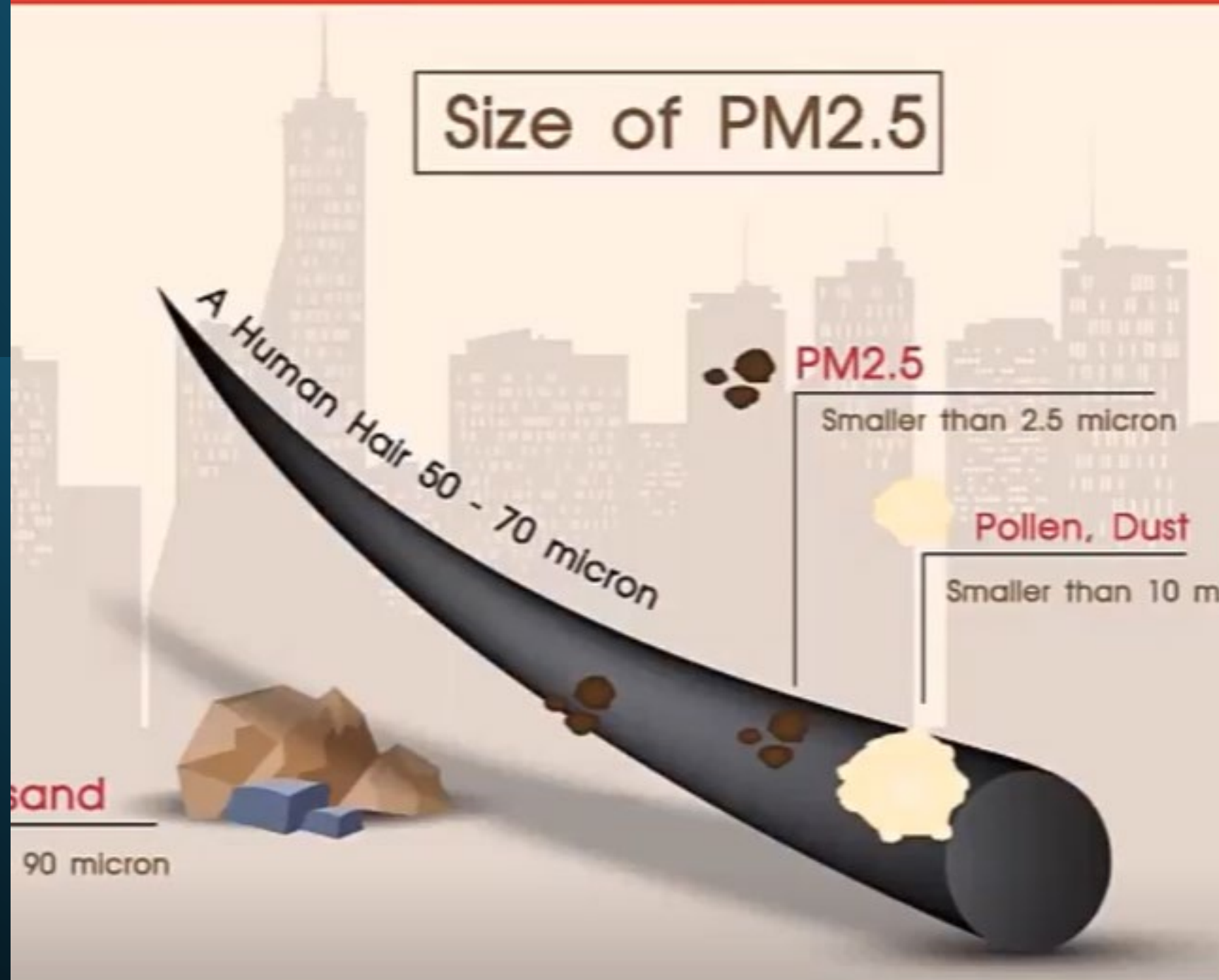




Wildfire Smoke

Mixture of harmful pollutants - PM 2.5 is the most concerning due to size

What is it?



AQI – Air Quality Index

- Calculated based on 1 to 12 hour weighted average
- More weight given to most recent hour

AQI Basics for Ozone and Particle Pollution			
Daily AQI Color	Levels of Concern	Values of Index	Description of Air Quality
Green	Good	0 - 50	Air quality is satisfactory, and air pollution poses little or no risk.
Yellow	Moderate	51 - 100	Air quality is acceptable. However, there may be a risk for some people, particularly those who are unusually sensitive to air pollution.
Orange	Unhealthy for Sensitive Groups	101 -150	Members of sensitive groups may experience health effects. The general public is less likely to be affected.
Red	Unhealthy	151 - 200	Some members of the general public may experience health effects; members of sensitive groups may experience more serious health effects.
Purple	Very Unhealthy	201 - 300	Health alert: The risk of health effects is increased for everyone.
Maroon	Hazardous	301 and higher	Health warning of emergency conditions: everyone is more likely to be affected.

Regulatory Changes

Temporary Emergency Wildfire
Smoke Rules

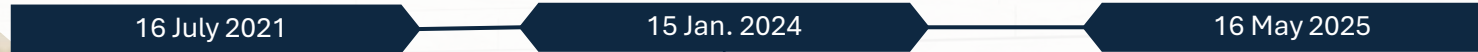
16 July 2021

15 Jan. 2024

Permanent Wildfire Smoke
Rules

Rule updated to align with
EPA's AQI Break Points

16 May 2025



AQI Break Point Changes



Revised AQI Breakpoints for PM_{2.5} (µg/m³)

AQI Range	Old PM _{2.5} Breakpoints (µg/m ³)	New PM _{2.5} Breakpoints (µg/m ³)
0–50	0.0 – 12.0	0.0 – 9.0
51–100	12.1 – 35.4	9.1 – 35.4
101–150	35.5 – 55.4	35.5 – 55.4 (<i>unchanged</i>)
151–200	55.5 – 150.4	55.5 – 125.4
201–300	150.5 – 250.4	125.5 – 225.4
301–400	250.5 – 350.4	225.5 – 275.4
401–500	350.5 – 500.4	275.5 – 325.4
501+	>500.4	325.5 – 999



Entiat City Park

Wenatchee, WA

☀️ 64 °F Sunny 92°/64° MSN ...

Chelan, WA

☀️ 65 °F Sunny 91°/64° MSN W...

Leavenworth, WA

☀️ 56 °F Sunny 94°/56° MSN ...

East Wenatchee, WA

☀️ 65 °F Sunny

Cashmere, WA

☀️ 67 °F Sunny



How to Access AQI – PUD Homepage

Wenatchee-Fifth St

Permanent Monitor

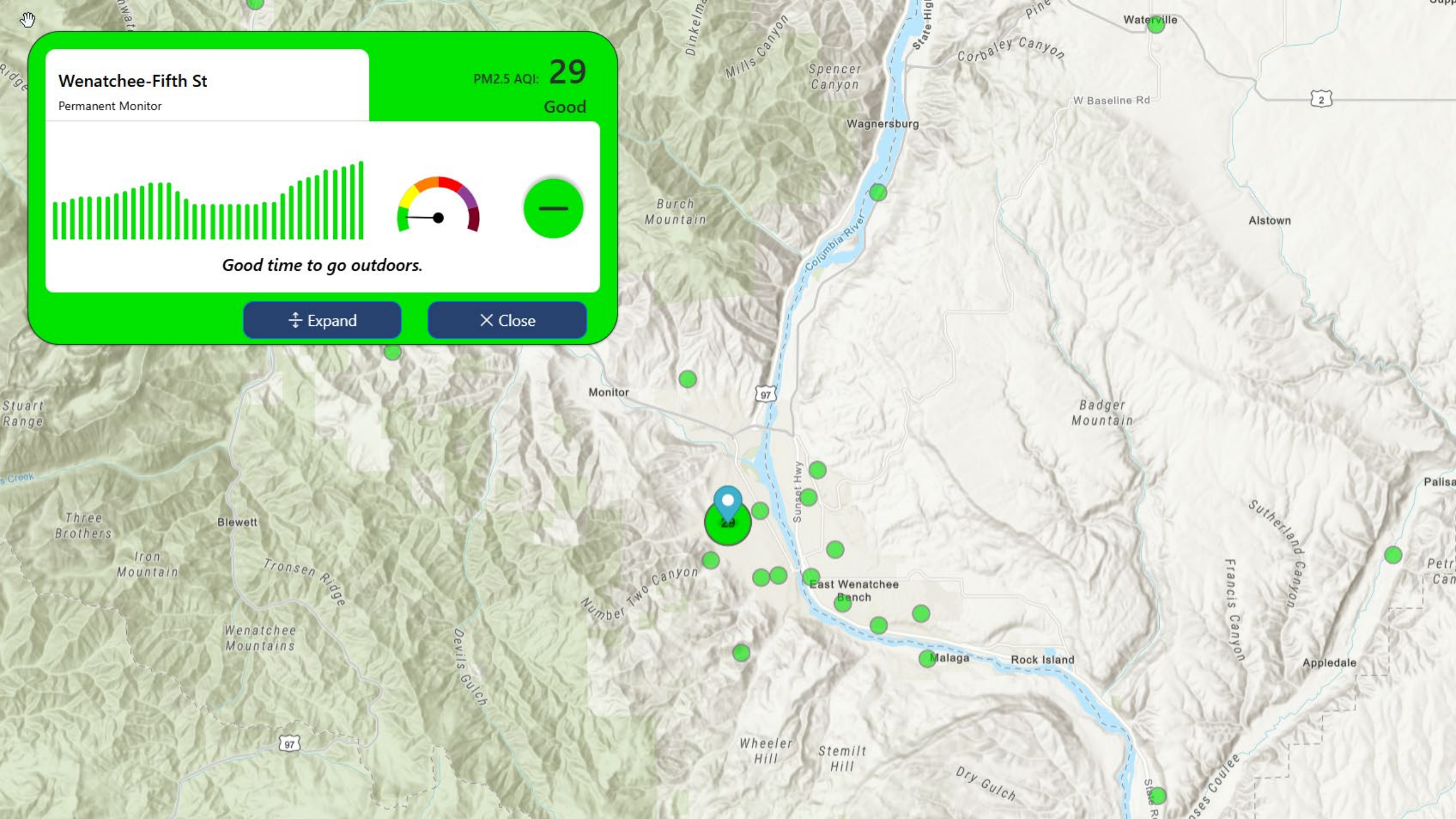
PM2.5 AQI: **29**
Good



Good time to go outdoors.

Expand

Close



District Wildfire Smoke Changes

- Updated Wildfire Smoke Standard
- Updated Employee Training – Monthly Safety Meeting
- Supervisor Specific Training
- Updated Supervisors of Exposed Workers Action Plan
- Updated Wildfire Smoke Map
- Communication Plan and Exposure Control Plan

PM 2.5: Breakpoints	AQI: Breakpoints	Requirements
0.0 – 20.4	0 – 71	<ul style="list-style-type: none"> - Ensure employees receive the wildfire smoke training. - Watch PM2.5 conditions and forecasts. - Ensure employees have two-way communication. - Provide for prompt medical attention without retaliation when needed.
20.5 – 35.4	72 – 100	<p>All of the above and:</p> <ul style="list-style-type: none"> - <u>Notify employees of current or worsening PM2.5 conditions in pre-shift meetings, by cell phone or radio use.</u> - Ensure only trained employees work outdoors. - Consider implementing exposure controls listed in section 7.0 and providing voluntary use N95 respirators.
35.5 – 250.4	101 – 350	<p>All of the above and:</p> <ul style="list-style-type: none"> - Ensure workers with symptoms needing immediate medical attention are moved to a location with clean air. - <u>Directly distribute or maintain a sufficient supply of N95 respirators at the work site and encourage voluntary use.</u> - Implement effective exposure controls listed in section 7.0 whenever feasible.
250.5 – 500.3	351 – 848	<p>All of the above and:</p> <ul style="list-style-type: none"> - Ensure workers experiencing symptoms requiring medical attention be moved to a location that ensures sufficient clean air. - <u>Directly distribute N95 respirators to employees and must encourage voluntary use.</u>
500.4 – 554.9	849 – 956	<p>All of the above and:</p> <ul style="list-style-type: none"> - Ensure the mandatory use of the following respirators: N95 filtering-facepiece respirator; Half-face air-purifying respirator with P100 with an APF of 10.
555 and above	957 or more	<p>All of the above and:</p> <ul style="list-style-type: none"> - <u>Ensure the mandatory use of the following respirators:</u> loose or tight-fitting powered air purifying respirator (PAPR), or Full-facepiece air-purifying respirator with an of APF of 25 or more. <i>Note: During emergency response, required use of respirators must be implemented to the extent feasible.</i>



CHELAN COUNTY

Line Operation Fire Prevention

Safety Training