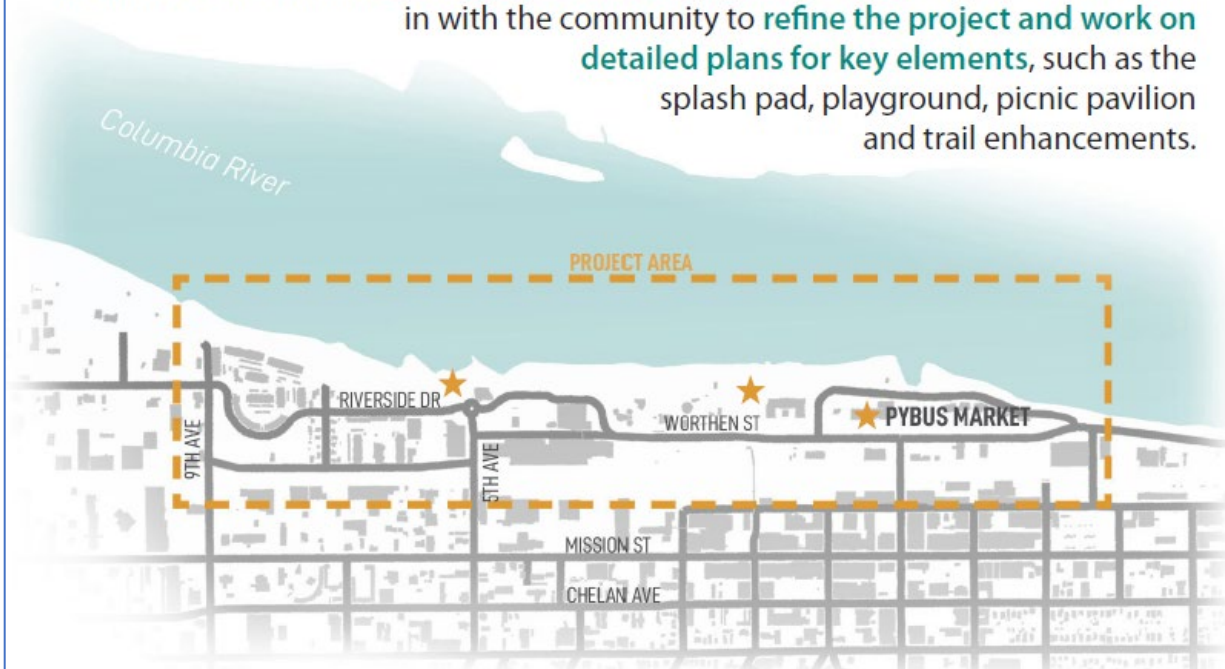


# WENATCHEE RIVERFRONT PARK

## Master Plan Implementation — Open House Opportunities

The Riverfront Park Development Plan was approved by Chelan PUD and the City of Wenatchee this winter. **Design of the first phase is underway**, and we're checking in with the community to **refine the project and work on detailed plans for key elements**, such as the splash pad, playground, picnic pavilion and trail enhancements.



Please join the project team during one of these sessions to provide feedback, ask questions and enjoy refreshments:

**Tuesday, Sept. 13, 4–7 PM**

Pybus Board Room (outside entrance along south side of building)

**Wednesday, Sept. 14, 7–10 AM**

Pybus Board Room (outside entrance along south side of building)

★ Visit us at Pybus or at our two booths during both sessions —  
Along the Loop Trail by the Riverfront Railway and just north of 5th St.





PLAN VIEW - OPTION #1



AERIAL VIEW OF SPLASH PAD AREA LOOKING SOUTH



CLOSE UP OF SPLASH PAD





PLAN VIEW - OPTION #2

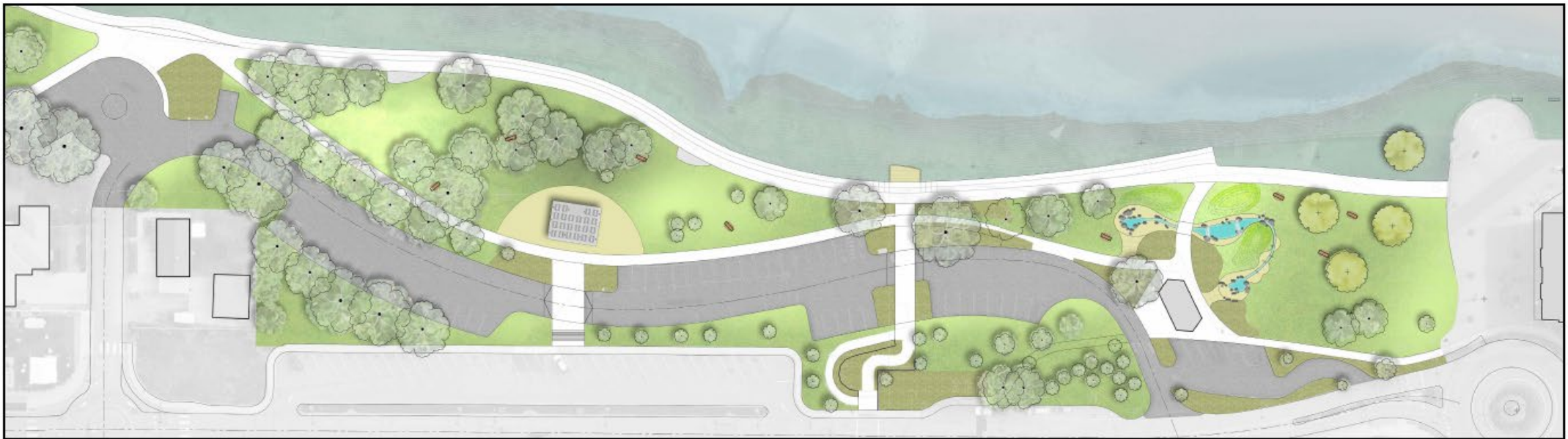


AERIAL VIEW OF SPLASH PAD AREA LOOKING SOUTH



CLOSE UP OF SPLASH PAD





PLAN VIEW - OPTION #3



AERIAL VIEW OF SPLASH PAD AREA LOOKING SOUTH



CLOSE UP OF SPLASH PAD

# WENATCHEE RIVERFRONT PARK | SPLASH PAD

