

# Quarterly load update

May 3, 2021

## Wenatchee Valley home-building boom just keeps on going

Builders, contractors, permit processors busy while first-time home buyers compete with Zoomers

By Nevonne McDaniels  
World staff writer Apr 1, 2021

Stay Informed. Subscribe for only \$2.49/week



CHELAN COUNTY  
**POWER**

[www.chelanpud.org](http://www.chelanpud.org)

# Today's agenda



- Updated load forecast
- Overview of active projects of note
- Lake Chelan - South shore feeder
- Substation build update
- No action requested today <Information only>



# System growth observations moving into Q2 2021

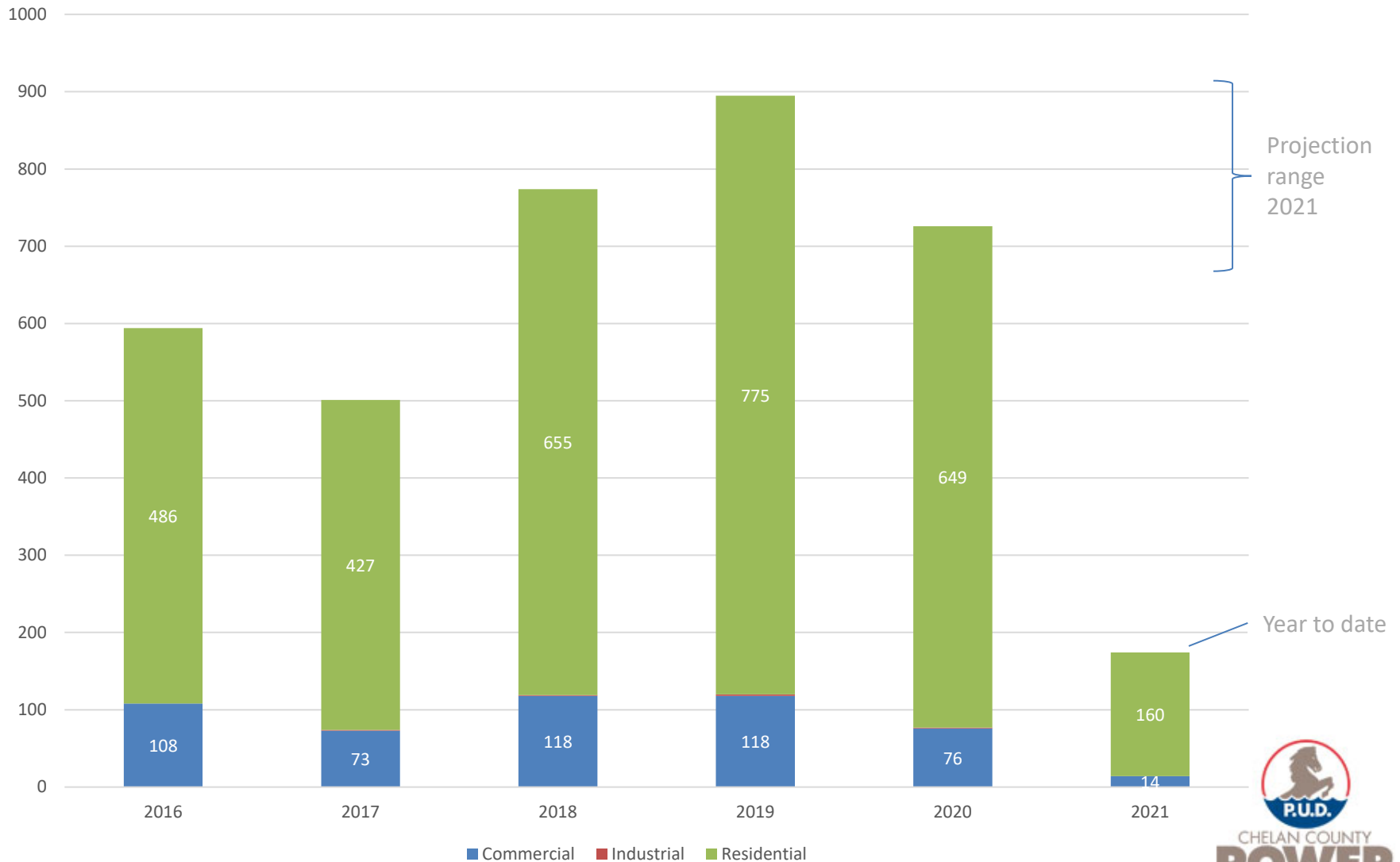


Photo: Triad Development, Wenatchee

- New residential housing remains a primary focus across the county  
Single family, multi-family & low barrier / affordable housing
- Moderate new development in commercial including hotels and retail shops
- Schools, restaurants and bars becoming re-occupied
- Pre-Covid norms emerging

# Electrical system growth

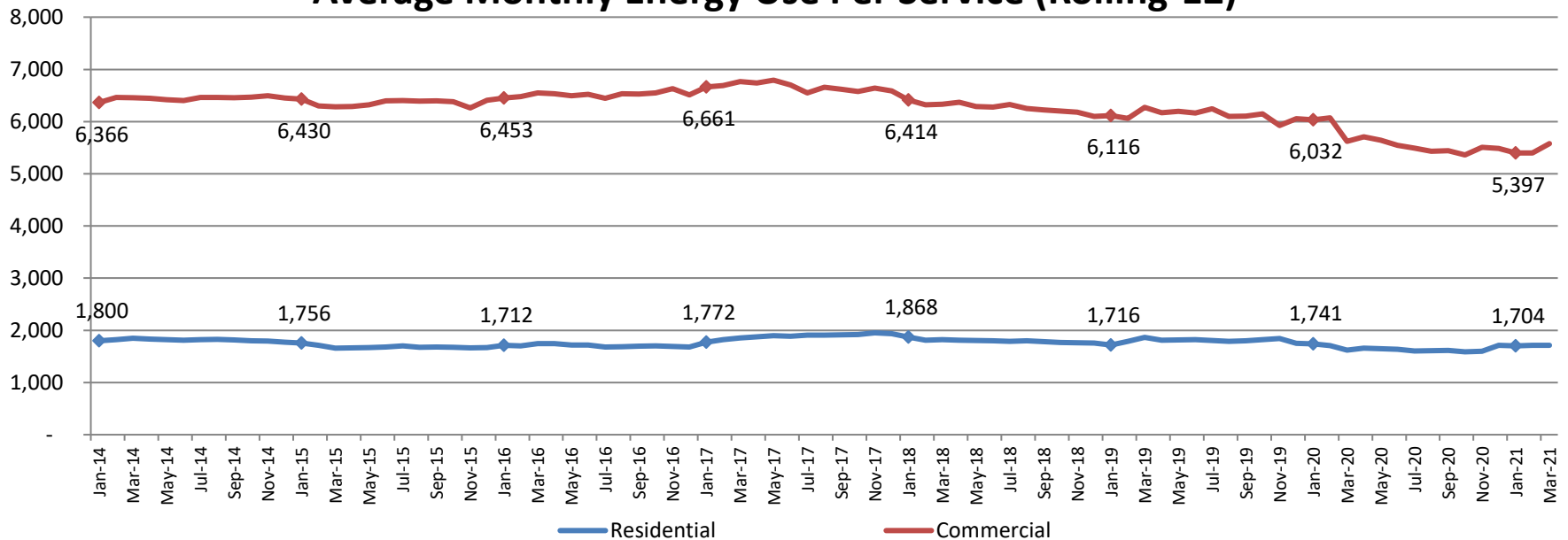
New electric meters by customer class



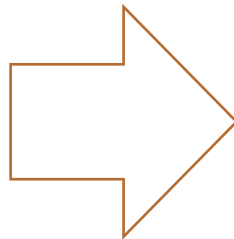
# Electrical system energy

Residential and Commercial

## Average Monthly Energy Use Per Service (Rolling-12)



Contributors to  
reduction in use



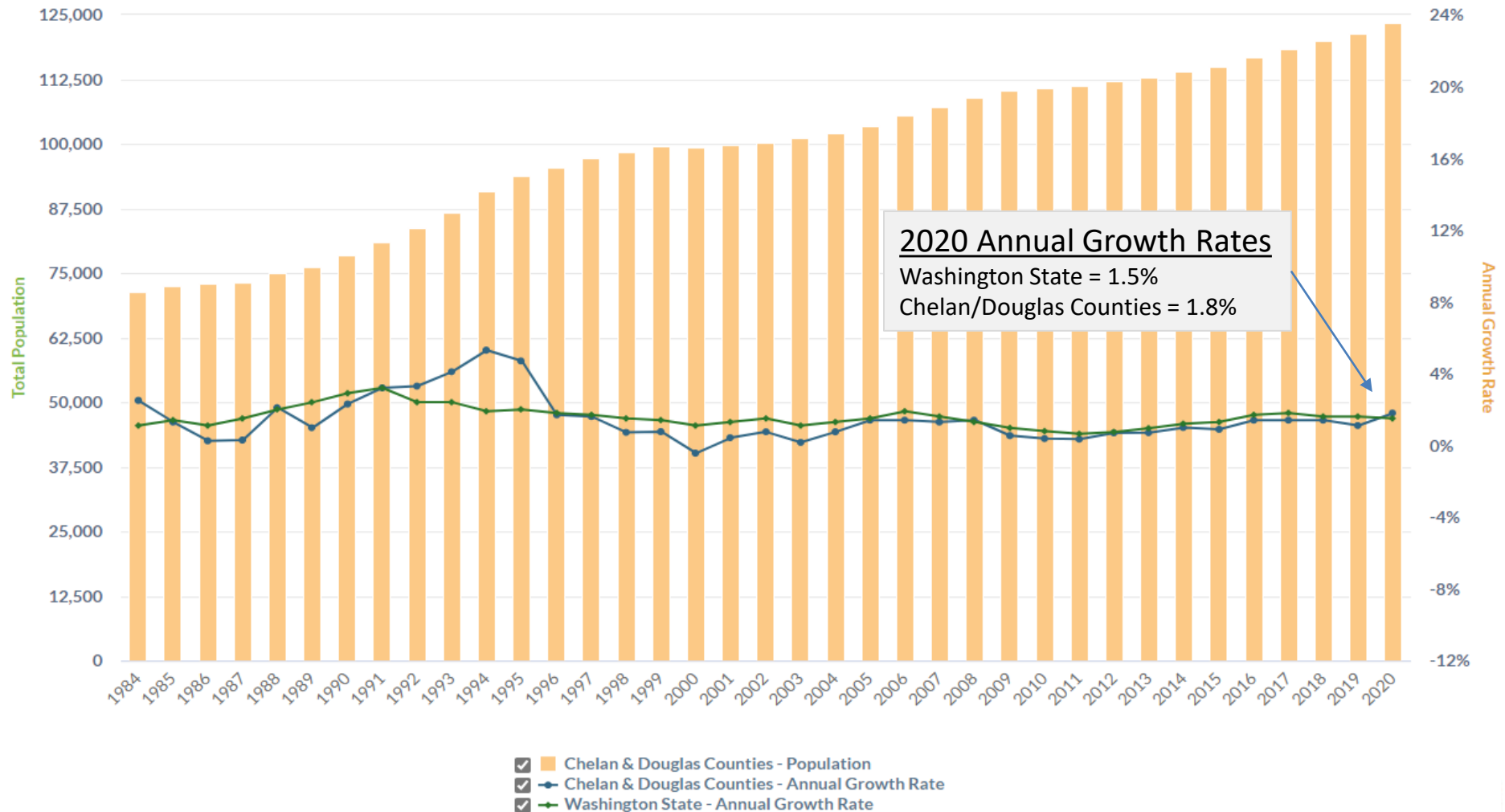
- WA State energy code
- Energy conservation
- Energy efficiency
- Weather temperatures

# Chelan & Douglas counties

Data source: Institute for Public Policy & Economic Analysis (EWU)



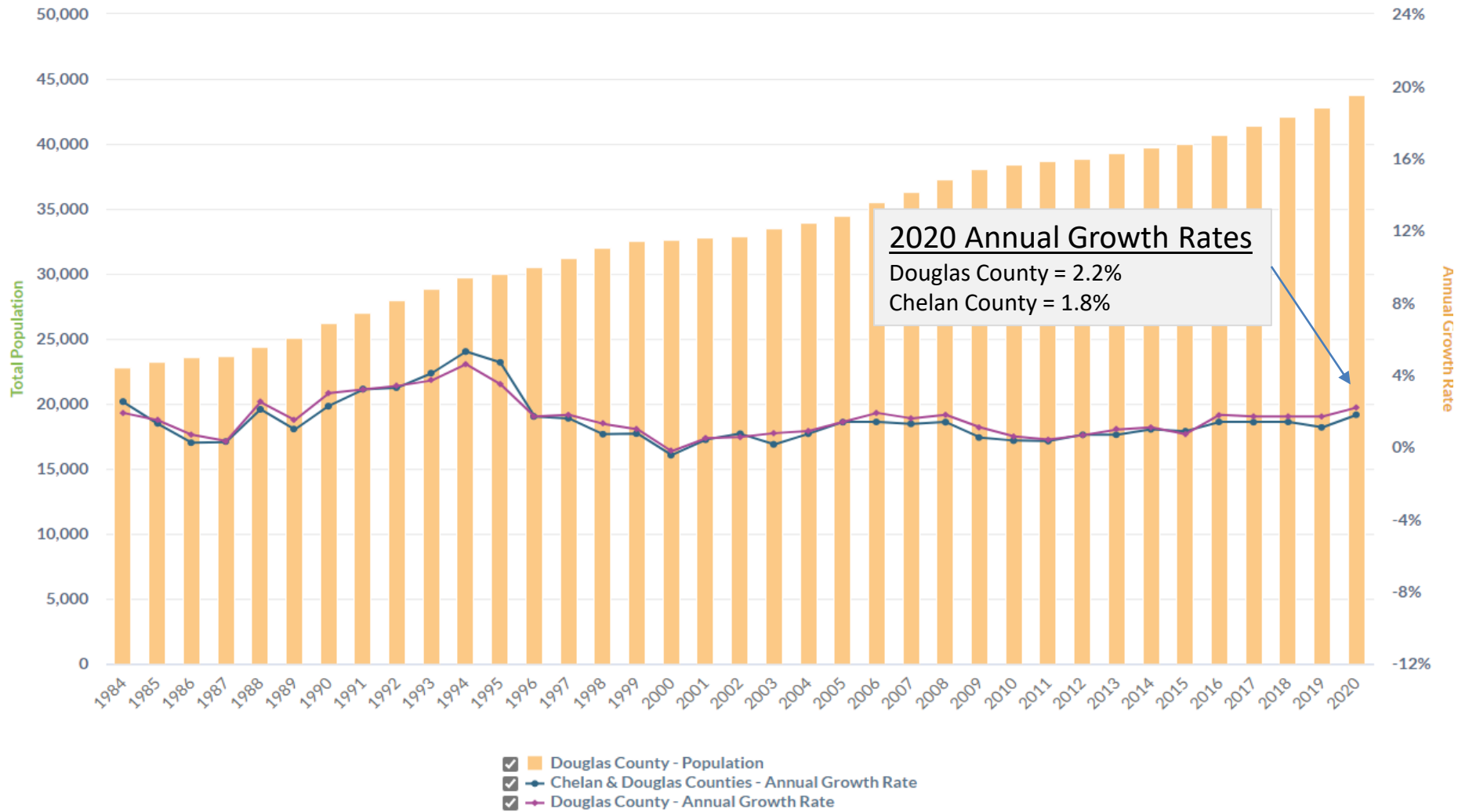
## 0.1.1 Total Population & Annual Growth Rate



# Chelan & Douglas counties

Data source: Institute for Public Policy & Economic Analysis (EWU)

## 0.1.1 Total Population & Annual Growth Rate



# 10 Year Load Forecast

(Net of Energy Conservation Plans)

Date of Forecast	Base Case	High Case	Low Case
Oct 2020	26 aMW * 1.1 %	130 aMW 4.6 %	-1 aMW - 0 %
Jan 2021	26 aMW * 1.1 %	130 aMW 4.6 %	-1 aMW - 0 %
April 2021 Annual Growth Rate	26 aMW * 1.1 %	130 aMW 4.6 %	-1 aMW - 0 %

Current  
Forecast



CHELAN COUNTY  
**POWER**

[www.chelanpud.org](http://www.chelanpud.org)



# New growth impact on the Fiber optic network



- Developers interest in Chelan PUDs fiber network remains high
- In partnership w/retail service providers, we can serve those developments
- District policies ensure fiber duct & vaults are built with electrical system infrastructure
- New developments often occur in areas where fiber exists
- New large developments of >100 units can necessitate offsite system improvements
- System improvements can include, replacing or adding fiber cables, and adding Distribution towers
- County and city development pre-applications processes help identify impacts to fiber, electric and water infrastructure

# Active projects of note:

All energy is shown in estimated  
(Peak) Megawatts

## NEW Large Project Applications Since December of 2020:

Winton Mill composting plant - Cole's corner	0.75 MW
Electrify America car charging stations- Leavenworth	0.80 MW
66 unit farmworker housing - Entiat	0.55 MW
21-lot residential development – Chelan	0.15 MW

---

Peak Demand ~ 2.21 MW

# Ohme substation





# Substation build progress – Hawley Street



# Substation build activity

Station	Next Build Phase	Expected Complete
Hawley	Energize	July 2021
Ohme	Energize	September 2021
North Shore	Outreach and civil design	June 2021
Leavenworth (Bavarian)	Outreach and civil design	June 2021
Wenatchee (upsized)	Finalize project plan	April 2021 (delayed)
Wenatchee Foothills	Siting and utility plans	Q4 2021
Project team restructure	Program team rollout	May 2021

*Please note:*

- Schedules are subject to change (station build team is updating)
- See 2021 District Performance Plan for more details



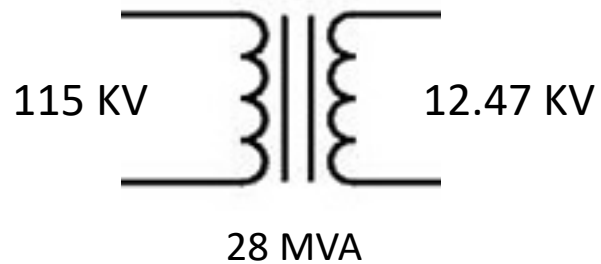
Special topic:

# Electrical demand on the South shore Lake Chelan

Work plan initiative:

## Construction of the South shore 3<sup>rd</sup> feeder

# South shore Substation



# Existing substation arrangement





# South shore Lake Chelan

(Looking south)

## Existing distribution feeder arrangement

Feeder 1 = Knapp's Coulee and Winesap

Feeder 2 = South shore





# South shore Lake Chelan

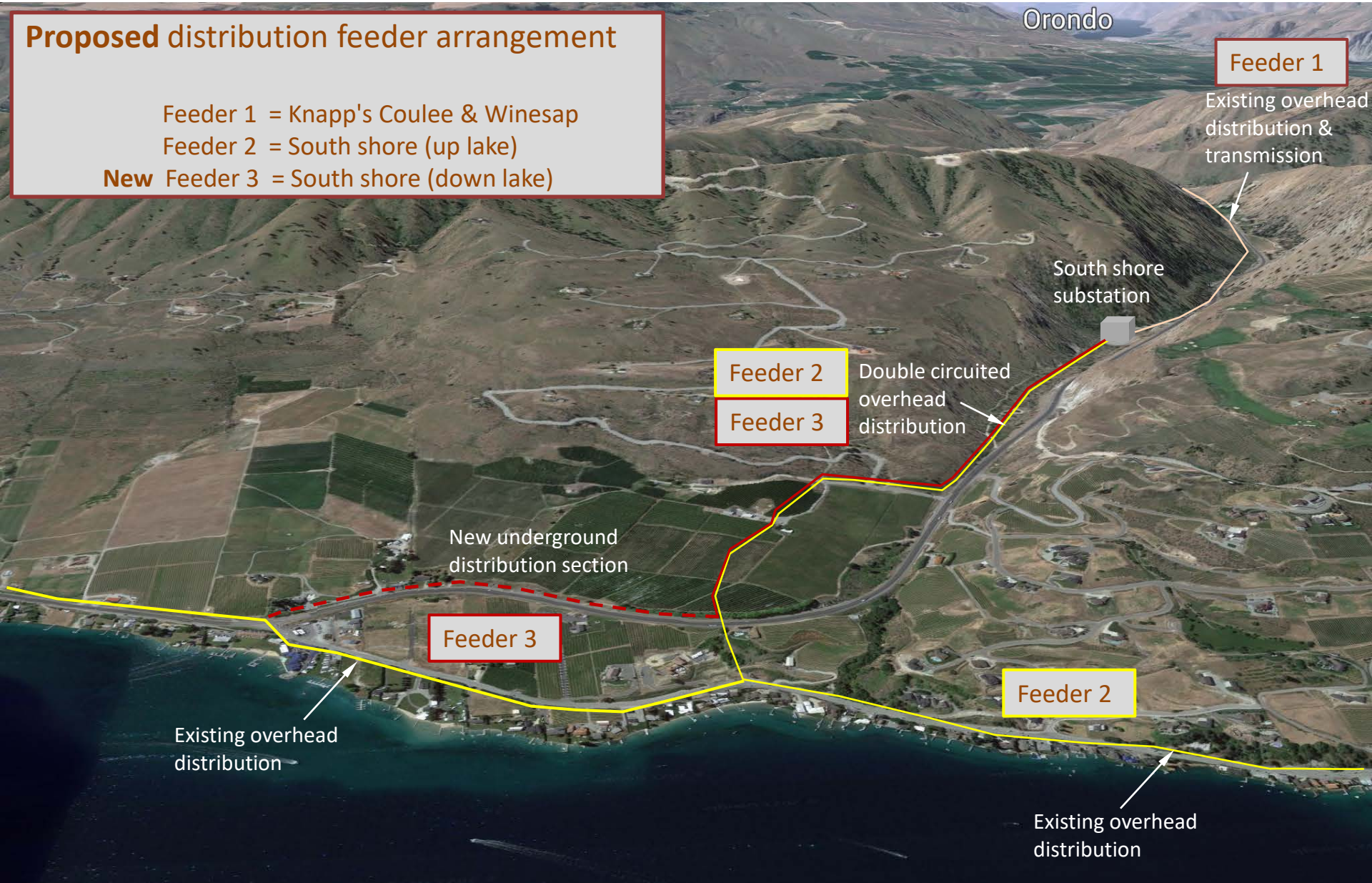
(Looking south)

## Proposed distribution feeder arrangement

Feeder 1 = Knapp's Coulee & Winesap

Feeder 2 = South shore (up lake)

**New** Feeder 3 = South shore (down lake)





# South shore Lake Chelan

(Looking south)

Orondo

South Shore  
Substation

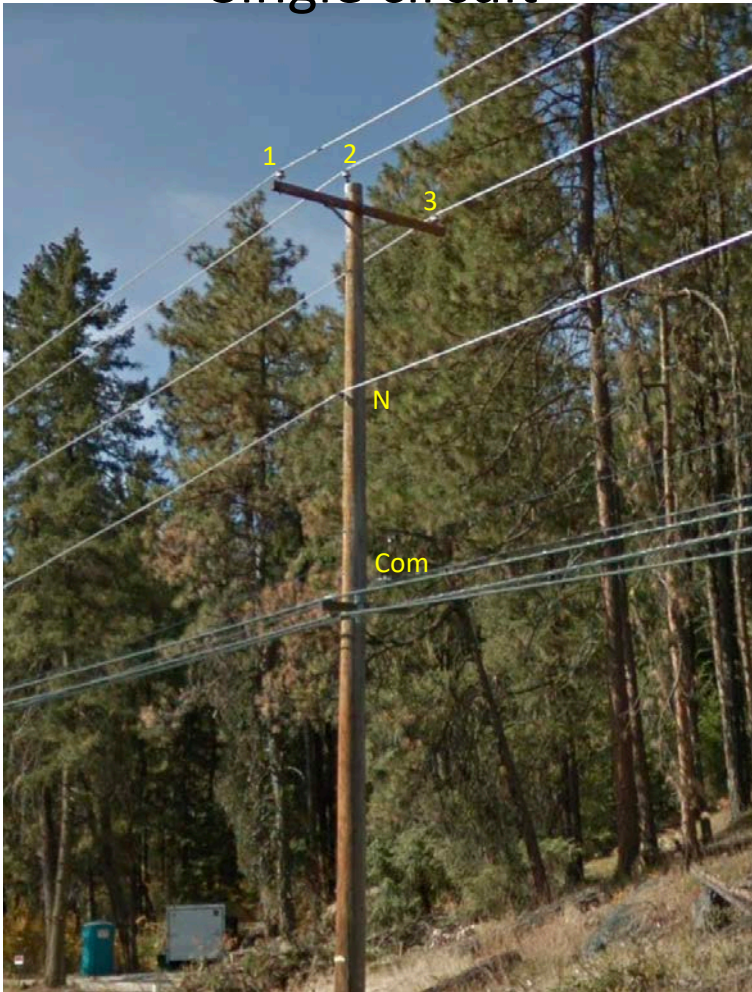
- District engaged property owner discussing options OH vs. UG
- Property could convert to development in the future
- Property owner and District agree to pursue UG conversion with future development efforts
- New UG section is “greenfield” & subject to scenic highway standards



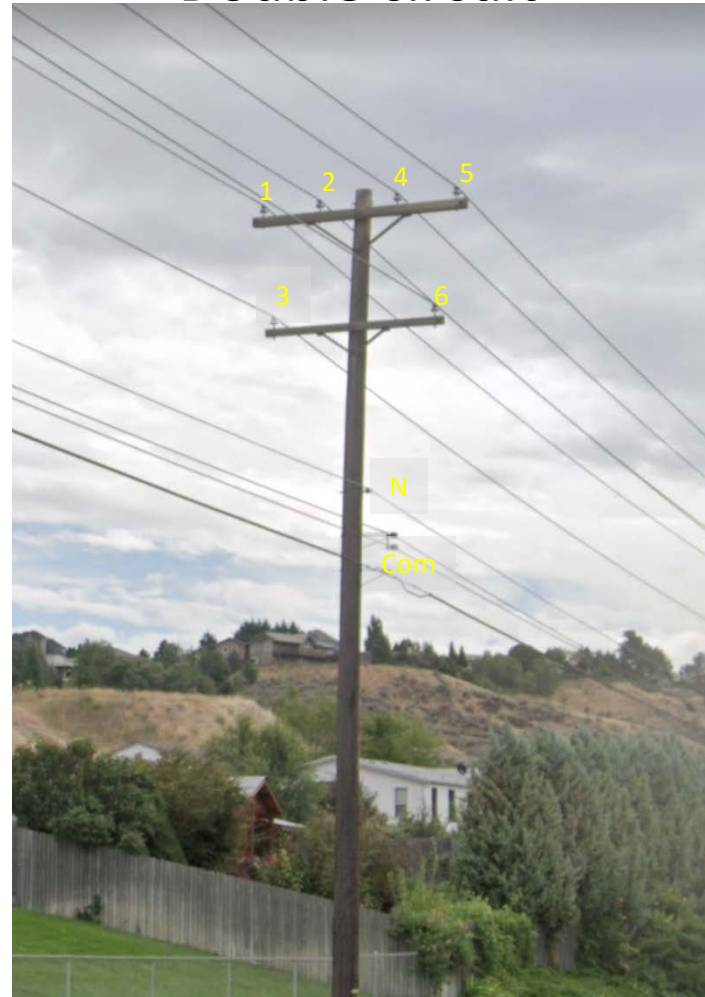


# Overhead distribution

## Single circuit



## Double circuit



# Questions