

Quarterly Load Update



Jan. 20, 2020

Andy Wendell – Director of Customer Services

Chad Rissman – Director of Engineering & Asset Management



CHELAN COUNTY
POWER

www.chelanpud.org

Why we're here



- Update 10-year load forecast
- Review electric, water & wastewater growth trends
- Review large customer projects
- Update substation construction status
- Answer questions – *No board action requested*



Key points

- New construction continues to grow
- Load projections reflect stability in High Density Load (HDL)
- Regional planning efforts continue
- Substation construction & property acquisition continue
- New technology enhances load forecasting – advanced meters (AMI), outage management system (OMS), advanced data management system (ADMS)

Indicators show 2020 will bring more new construction as in previous years



Sun, 12/01/2019 - 4:36am

My Place Hotel breaks ground in Wenatchee

Trends

- City high density zoning
- Creation of “Opportunity Zones”
- Foothills development plans moving forward
- More hotels

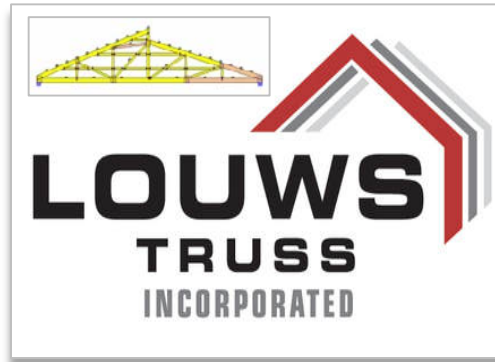
Growth in local business & new arrivals



Chelan



Cashmere



Cashmere



Wenatchee



Leavenworth

Wenatchee foothills housing developments



Queen's Court
52 Res Condos

Sienna
41 Res Lots

Beaconsfield
72 Res Lots

Triad 431
Res Lots

Deer Haven
120-unit Apt

Pheasant Hill
93 Res Lots

Castlerock Substation
Purchased 2033

New Water Services = 551
9% Growth

Wenatchee

East
Wenatchee

East
Wenatchee
Bench

South
Wenatchee

Wenatchee

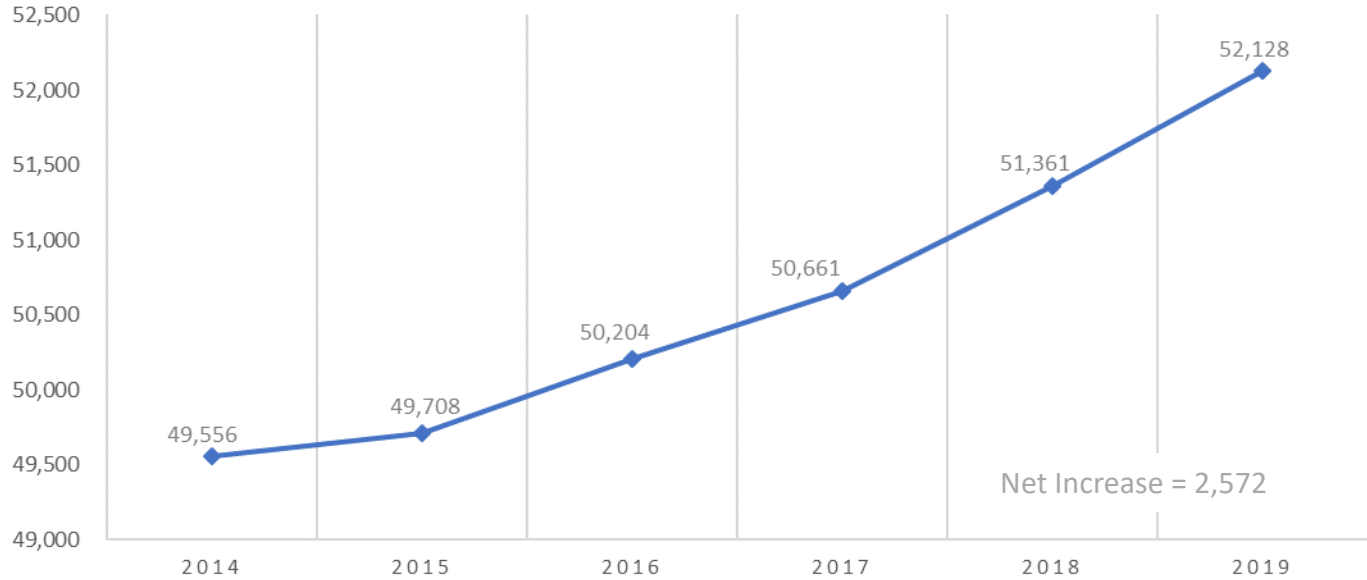
Housing development (cont.)



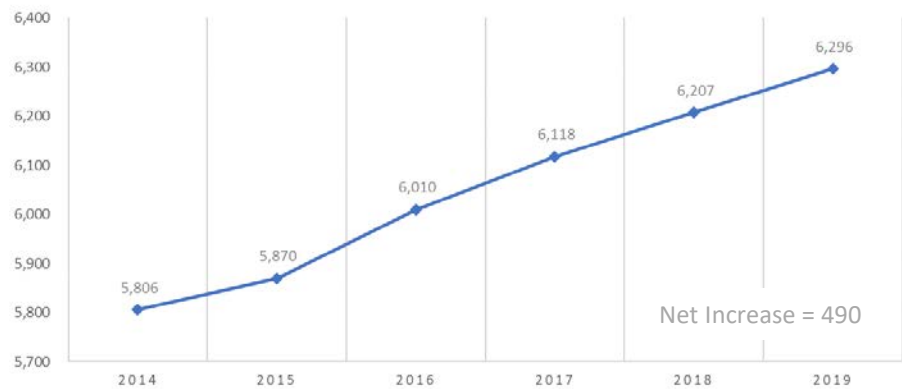
Queen's Court concept

- Higher density zoning – 3,000 sq/ft per lot
- Multifamily & cluster units

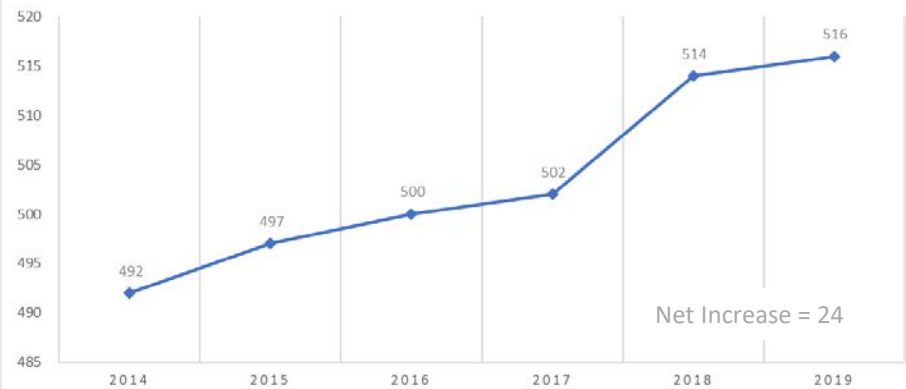
TOTAL NUMBER OF ELECTRICAL METERS (COM, RES, IND, OTHER)



TOTAL NUMBER OF WATER METERS (COM, RES, IND, OTHER)



TOTAL NUMBER OF WASTEWATER METERS (COM, RES, & IND)



Active projects of note:

All energy is shown in estimated
(Peak) Megawatts

NEW LARGE PROJECTS RECEIVED SINCE October 2019 :

167 unit residential apartment complex – Leavenworth	0.9 MW
37 lot residential development - Springwater St, Wenatchee	0.3 MW
44 unit residential apartment complex – Canal Wenatchee	0.3 MW
60 unit residential apartment complex – Maple St, Wenatchee	0.4 MW
40 unit residential apartment complex – Manson	0.3 MW
Church near Kimber Rd – Cashmere	0.16 MW
89 room hotel Penny Rd. Olds Station – Wenatchee	0.75 MW
95 room hotel – N. Wenatchee Ave (re-build)	0.50 MW
64 room hotel – Ninth St, Wenatchee	0.50 MW
Beta Hatch industrial – Cashmere	1.20 MW
Commercial space – Peshastin Mill Rd	1.00 MW

Peak Demand ~ 6.31 MW

10 Year Load Forecast Change

(Net of Energy Conservation Plans)

Date of Forecast	Base Case	High Case	Low Case
Jun 2019	48 aMW 2.0 %	203 aMW 6.6 %	7 aMW 0.3 %
Sep 2019	32 aMW 1.3 %	171 aMW 5.7 %	7 aMW 0.3 %
Dec 2019	26 aMW *	165 aMW	3 aMW
Annual Growth Rate	1.2 %	6.2 %	0.1 %

Current
Forecast



*** Note:**

**No new cryptocurrency applications or inquiries,
Base case assumes average economic development**



CHELAN COUNTY
POWER

www.chelanpud.org

No. Wenatchee Substation expansion

Diamond Foundry



Substation status

Substation	Stage	Stage Completion
Ohme	Site design & transformers delivered	complete
Diamond Foundry	Grading work & transformers delivered	complete
Wenatchee expansion	Site plan / General arrangement	Q2 - 2020
Chelan Gorge	Transmission line, route design	Q2 - 2020
North Shore	ECI Consultant- Site plan/ arrangement	Q1- 2020
Leavenworth	ECI Consultant- Site plan/ arrangement	Q1 - 2020
Mobile units	Delivery of two units	Q2 - 2020



2020 Strategic Planning action

- Review electric system cost for line extensions
- Report on alternatives in Q3



Summary

- New construction continues to grow
- Load projections reflect stability in High Density Load (HDL)
- Regional planning efforts continue
- Substation construction & property acquisition continue
- New technology enhances load forecasting – AMI, OMS, ADMS

Questions?