

Quarterly electric load update

November 1, 2021



Presented by: Andy Wendell, Director Customer Service,
Chad Rissman, Director Engineering Asset Management

Why we are here today

- Growth trends through 3rd quarter 2021
- Load forecast update
- Large projects of interest
- Substation build status
- No action requested today

System growth observations into Q3 2021



Photo: Building A, Cashmere Mill property

- New residential housing and multi-family housing construction continues at moderate to high volumes throughout the County
- Material availability and labor resources for construction are impacting the pace of construction
- Emerging new development in commercial- including hotels and retail shops

County Residential Housing Data

Chelan County Residential Housing Units

	Chelan County	Washington
Total Housing Units	37,311	3,064,381
Occupied Housing Units	28,038 (75.1%)	2,800,423 (91.4%)

Indication that Chelan County has higher percentage of second homes, or vacation rentals.

Chelan County Occupied Residential Buildings

	Chelan County	Washington
Single-Family Detached Homes	19,648 (70.1%)	1,782,051 (63.6%)
Single-Family Attached Homes	540 (1.9%)	110,844 (4.0%)
2 Apartments	820 (2.9%)	66,245 (2.4%)
3 or 4 Apartments	1,001 (3.6%)	100,527 (3.6%)
5 to 9 Apartments	796 (2.8%)	127,774 (4.6%)
10 or More Apartments	2,496 (8.9%)	435,497 (15.6%)
Mobile Home or Other Type of Housing	2,737 (9.8%)	177,485 (6.3%)

~18.2% residentials are appartement style in Chelan County compared to 26.2% statewide

County Residential Housing Data

Chelan County Occupied Residential Buildings Construction Year

	Chelan County	Washington
2014 or Later	677 (2.4%)	62,312 (2.2%)
2010 to 2013	594 (2.1%)	99,185 (3.5%)
2000 to 2009	3,144 (11.2%)	440,508 (15.7%)
1980 to 1999	8,048 (28.7%)	852,224 (30.4%)
1960 to 1979	6,639 (23.7%)	712,540 (25.4%)
1940 to 1959	4,895 (4,895.0%)	349,181 (349,181.0%)
1939 or Earlier	4,041 (14.4%)	284,473 (10.2%)

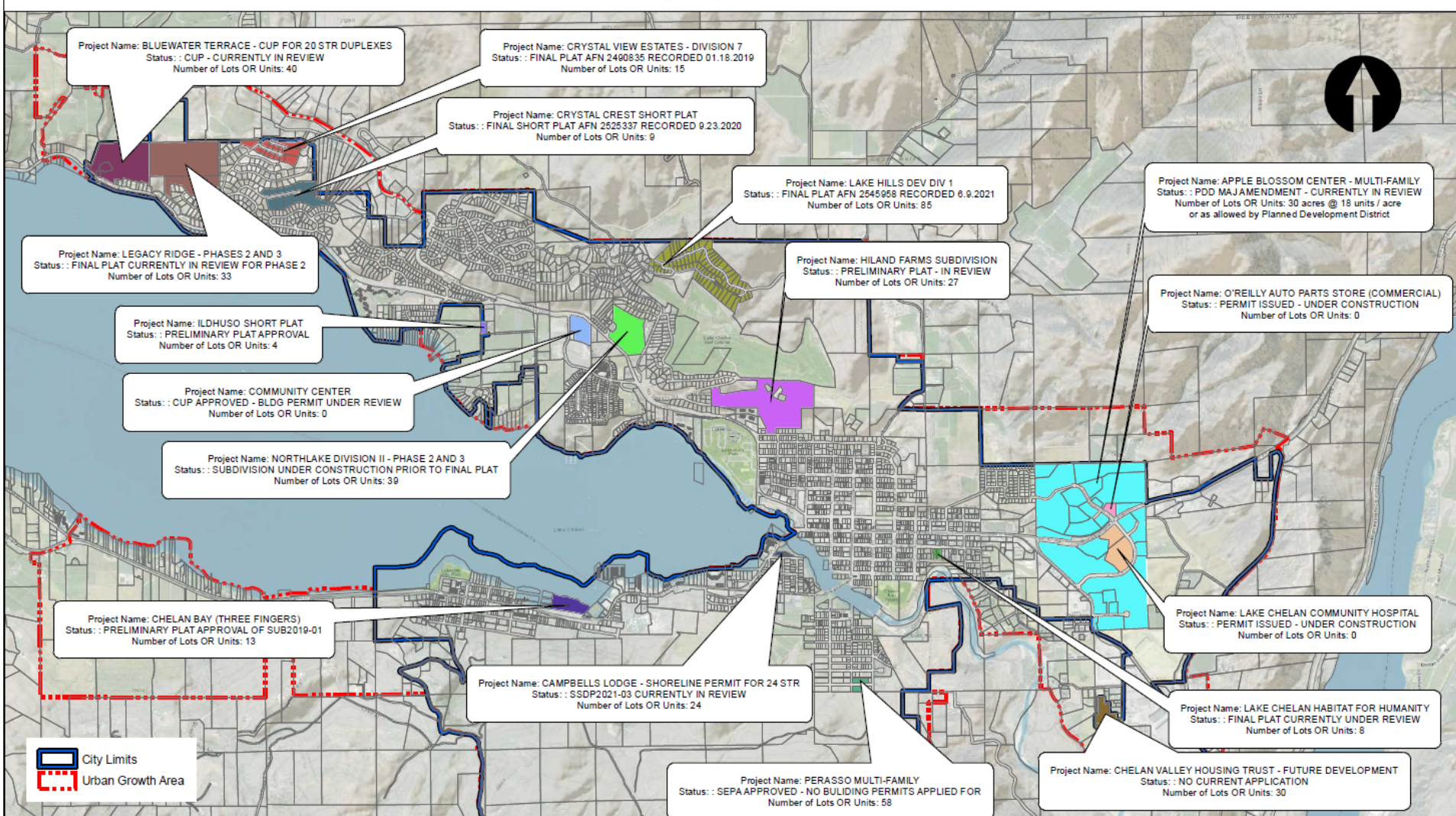
The bulk of our electrical distribution system was built between 1960 and 1990

Applications for new utility service YTD, 2021

Electric	Electrical Residential	556	794
	Electrical Commercial	68	
	Electrical High-Density-Load	1	
	Electrical Application other	152	
	Electrical Development	17	
Wastewater	Wastewater Residential	10	11
	Wastewater Commercial	1	
Water	Water Residential	86	105
	Water Commercial	3	
	Water Development	3	
	Water Application other	13	

CITY OF CHELAN - DEVELOPMENT PROJECT MAP

For General Information Purposes Only
Please Contact the Planning Department For Additional Information



OCTOBER 2021

Chelan City: 17 active developments, ~400 new residential units

Future areas of repurposed development

Lineage Properties



North Wenatchee

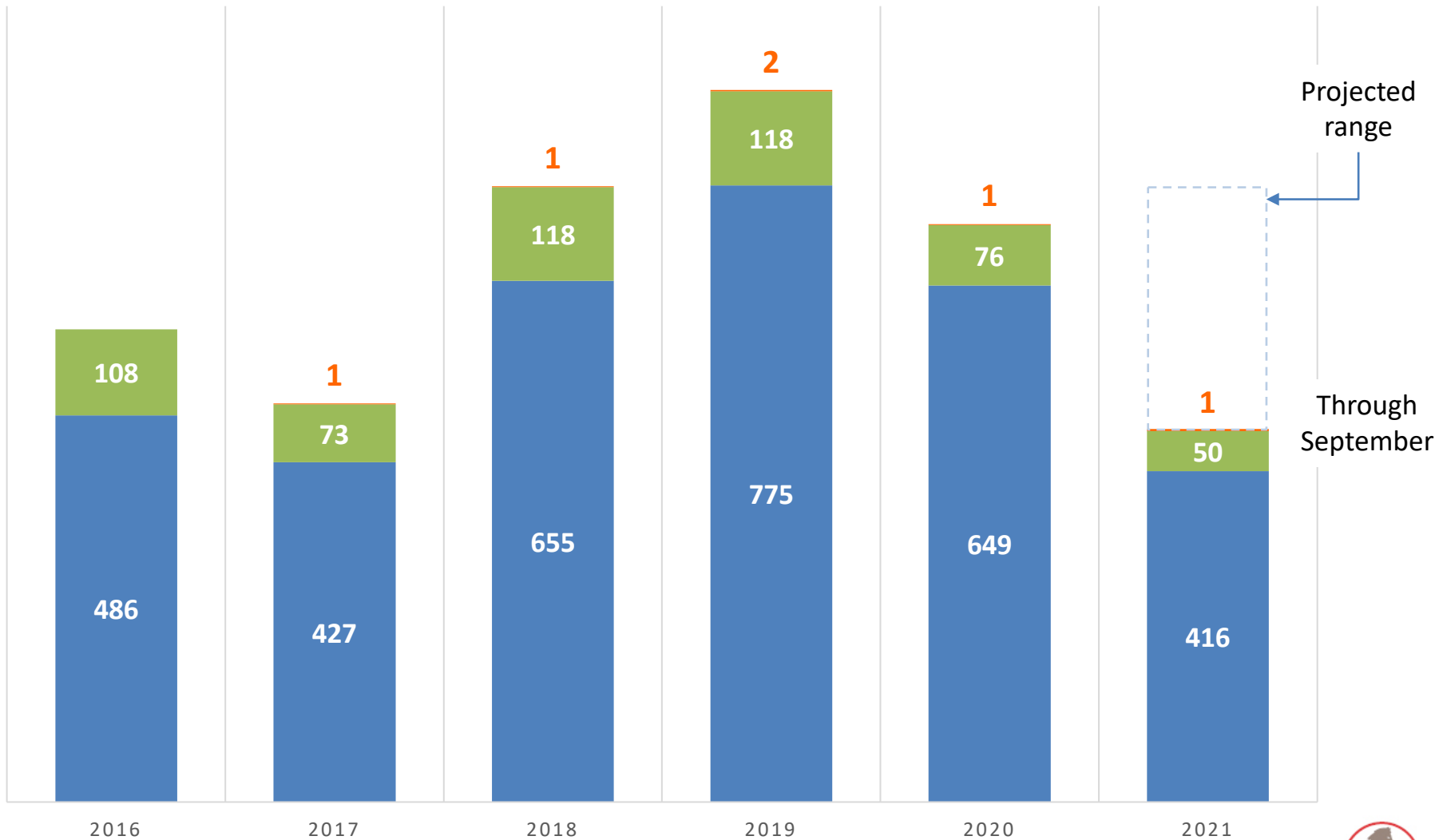


5th & Wenatchee Ave Properties



Electric meter installs through September 2021

■ Electric - Residential ■ Electric - Commercial ■ Electric - Industrial



10-year load forecast

(net of energy conservation plans)

Date of Forecast	Base Case	High Case	Low Case
April 2021	23.5 aMW * 1.0 %	94 aMW 3.5 %	- 4 aMW - .2 %
July 2021	23.5 aMW * 1.0 %	94 aMW 3.5 %	- 4 aMW - .2 %
Oct 2021 Annual growth rate	31 aMW * 1.4 %	107 aMW 4.3 %	16 aMW 0.7 %

Current
forecast →

Note:

Net change driven by increased confidence growth projections in industrial, residential and commercial sectors

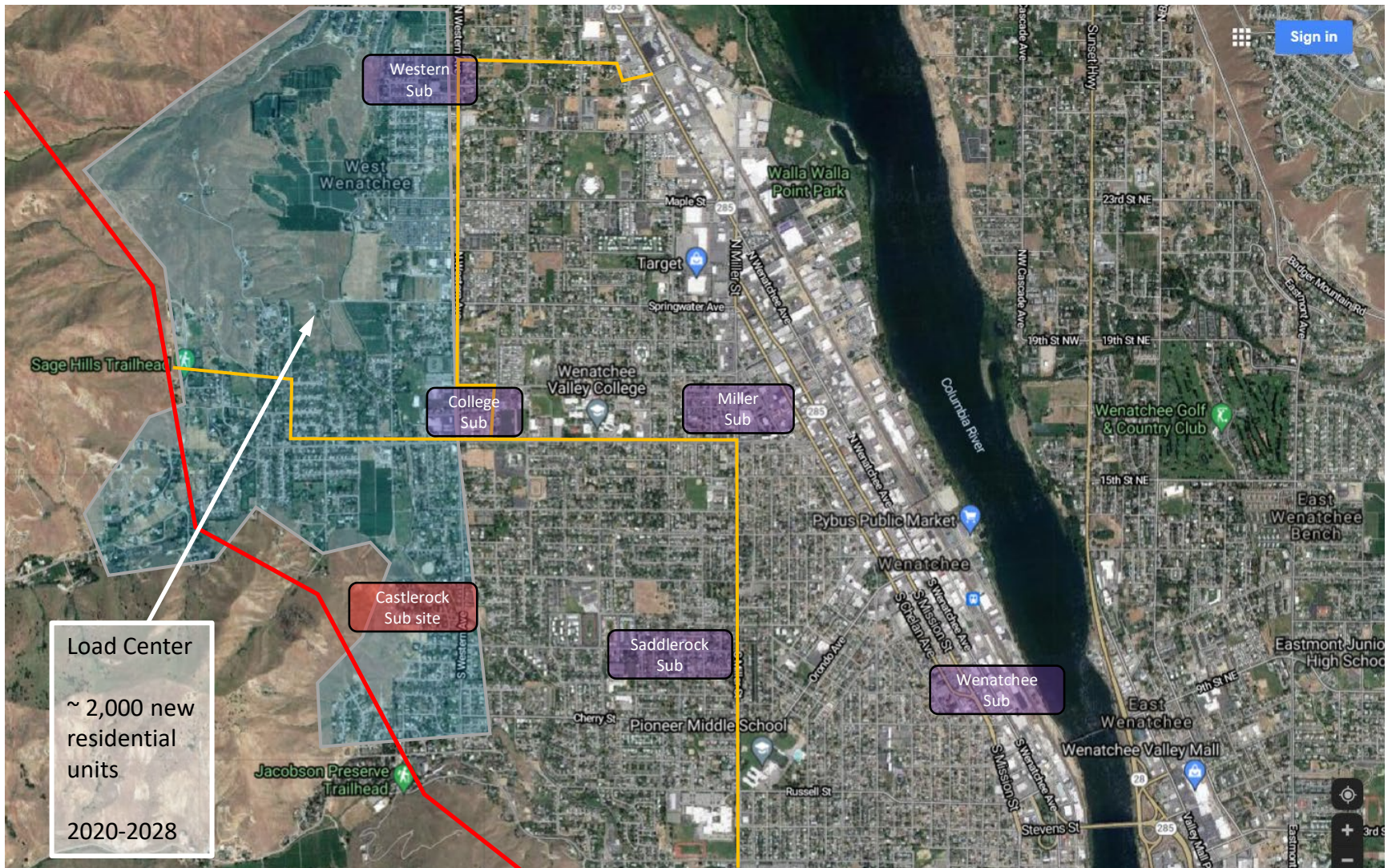
Substation build activity

Station	Next Build Phase	Expected Complete
Hawley	Energize & in-service	July 2021
Ohme	Energize planned	December 2021
North Shore	Outreach and design	Q2 - 2022
Leavenworth (Bavarian)	Outreach and civil design	Q2 - 2022
Wenatchee (upsized)	Finalize project plan	Q3 - 2022
Wenatchee Foothills	Siting and utility plans	Q4 - 2022
Malaga/Stemilt	Site property evaluations	ongoing

Please note:

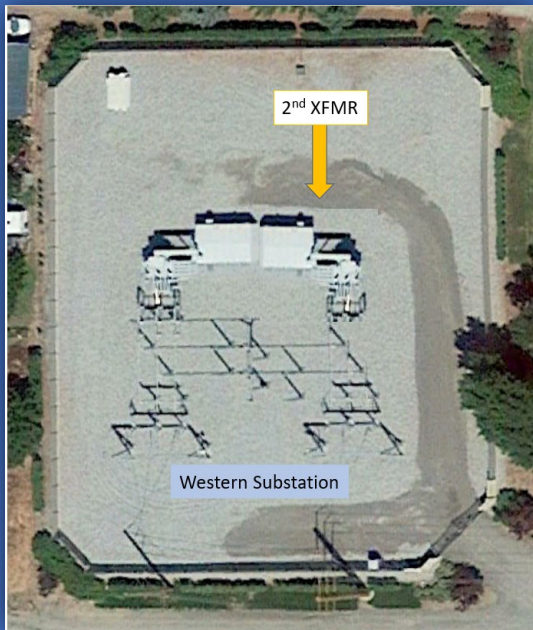
- Schedules are subject to change (station build team is updating)
- See 2021 District Performance Plan for more details

Current Substations & Western Wenatchee



Other Options Under Consideration For Western Wenatchee

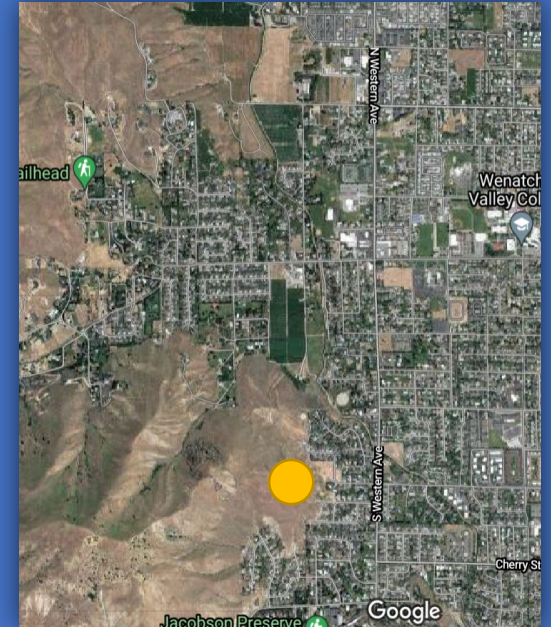
Install a second transformer
at Western Substation



Increase size of power
transformer at College Sub



Build new substation on
existing Castlerock sub property



Summary

- New construction and redevelopment of properties continues across the county
- Electrical infrastructure investments timely
- Approximately 1.5 % load growth projected
- Confidence levels around load growth increases with improved planning
- District utilities positioning well to meet demands of growth

Questions

