

Quarterly Electric Load Update

May 2, 2022

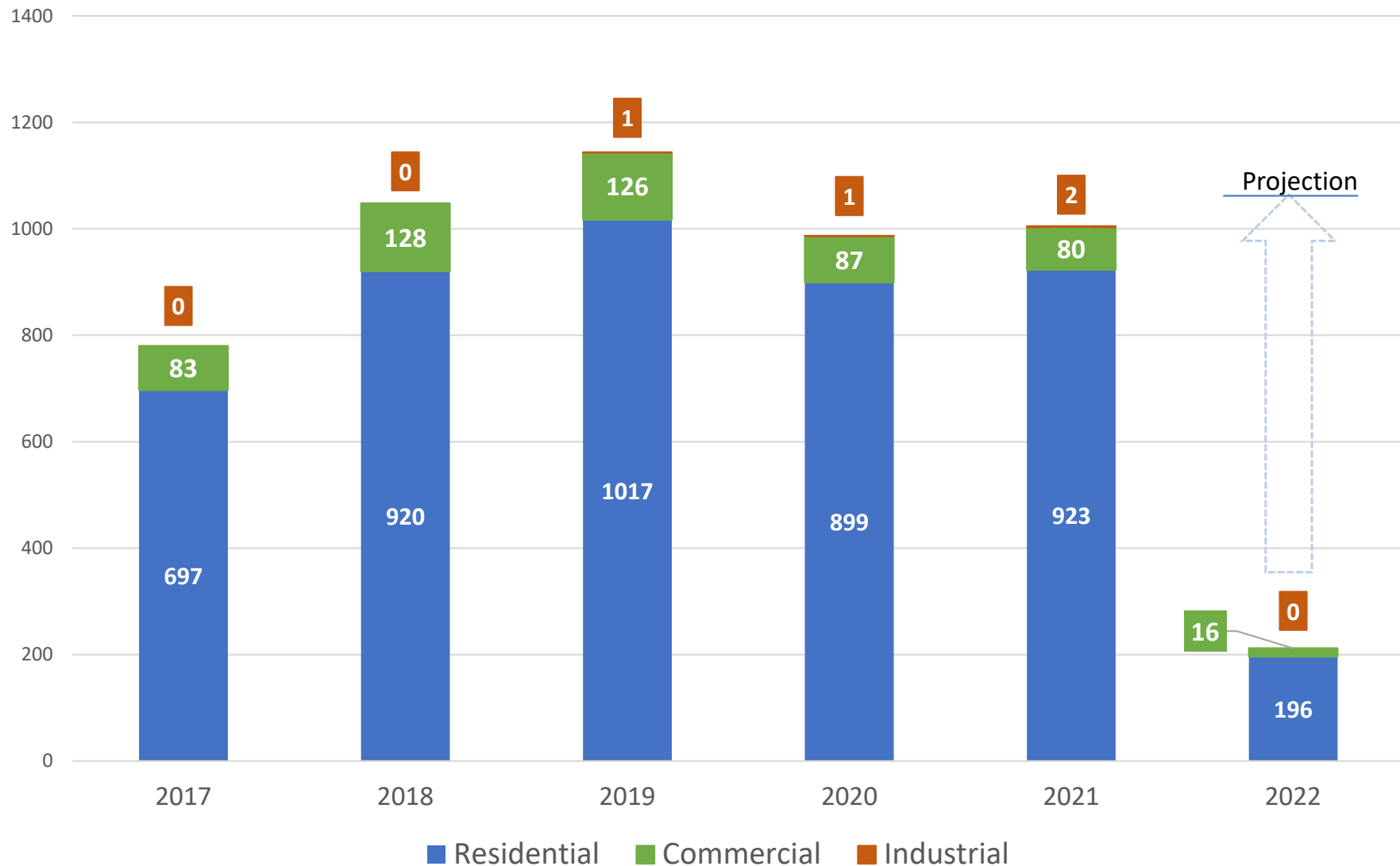


Presented by: Andy Wendell, Director of Customer Service

Why We Are Here Today

- 2022 new services and meters installed
- Growth for 2022 & Load forecast update
- County wide developments
- Substation build status
- Commissioning Ohme Substation
- No action requested today

Meter Installs 2017 – 2022 YTD




10-Year Load Forecast

(net of energy conservation plans)

Date of Forecast	Base Case	High Case	Low Case
April 2021	23.5 aMW * 1.0 %	94 aMW 3.5 %	- 4 aMW - .2 %
July 2021	23.5 aMW * 1.0 %	94 aMW 3.5 %	- 4 aMW - .2 %
Oct 2021 Annual growth rate	31 aMW * 1.4 % <i>DF 18aMW</i>	107 aMW 4.3 %	16 aMW 0.7 %

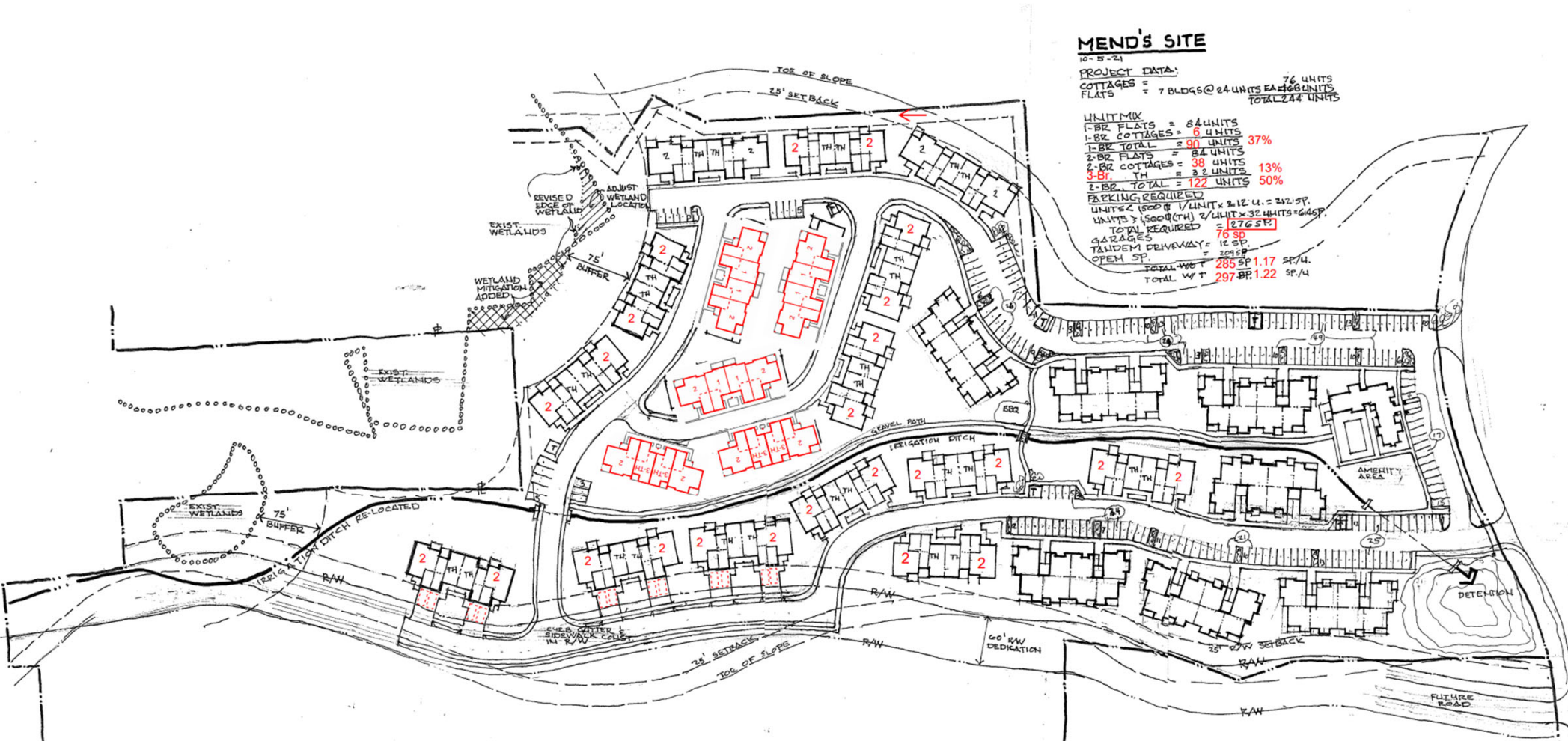
Current
forecast



Note:

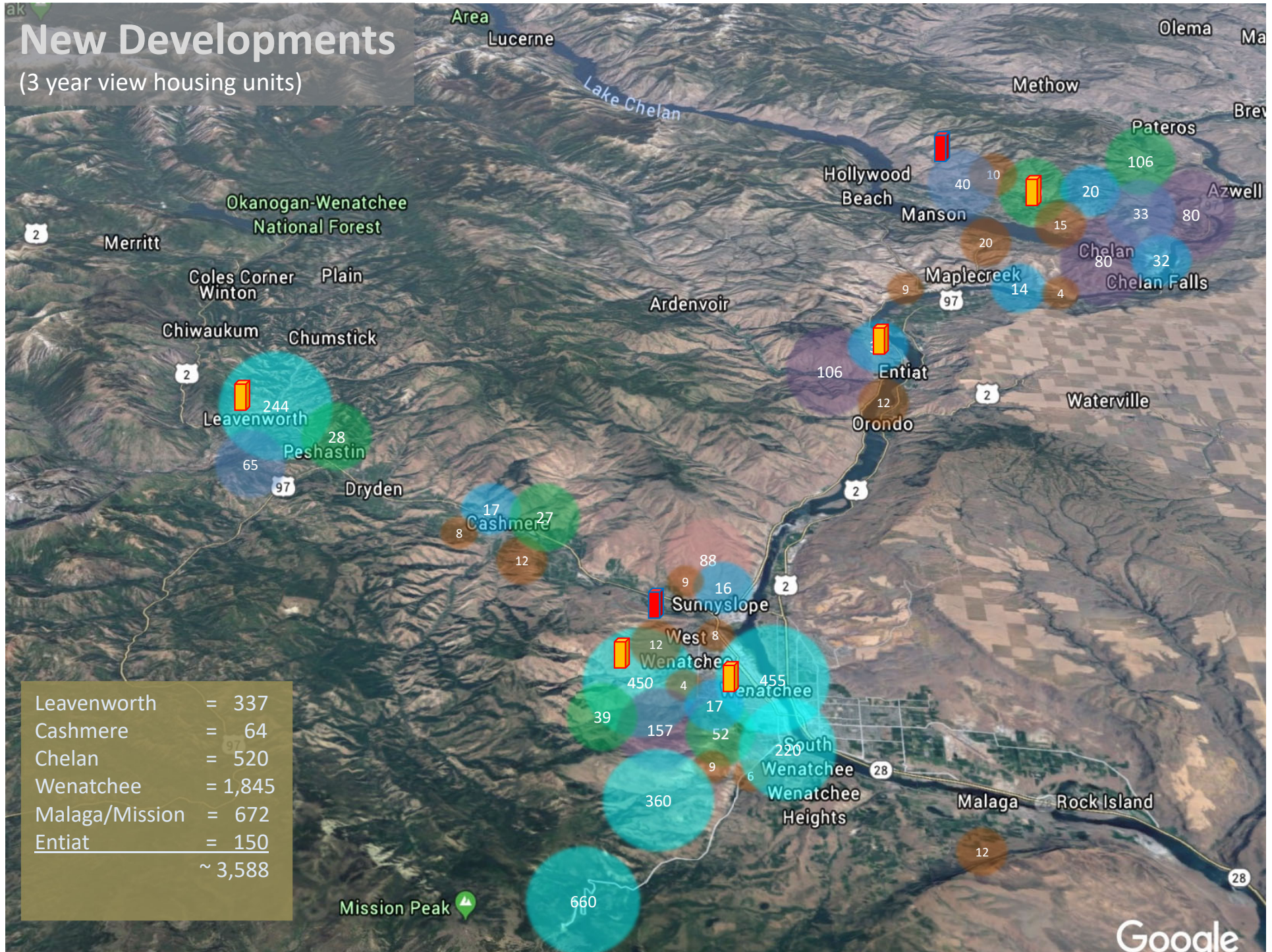
Increase in low case driven by knowns in Diamond Foundry, residential and commercial sectors growth, and more confidence around electrical vehicle adoption rates

Developments County Wide



New Developments

(3 year view housing units)



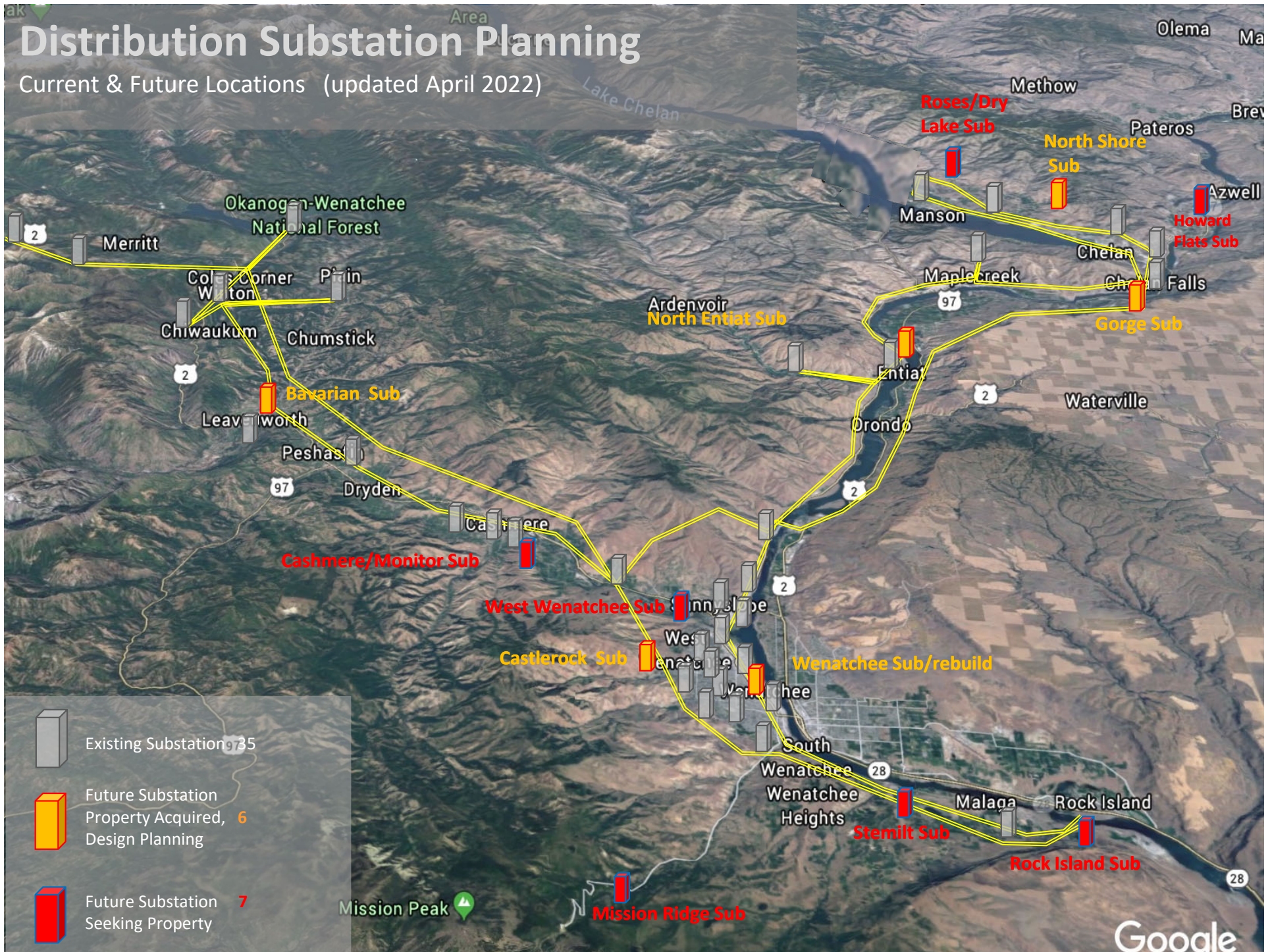
Google



CHELAN COUNTY

Distribution Substation Planning

Current & Future Locations (updated April 2022)



Google



CHELAN COUNTY

Chelan PUD Substation Planning

Updated April 2022

Substation & Vicinity		Year needed ¹	Property Acquired	Transmission Required ²
North Shore Substation	Lake Chelan, Henderson Road	2023	Yes	No
Bavarian Substation	Chumstick Highway Leavenworth	2023	Yes	Yes
Wenatchee Substation	Worthen Street Wenatchee	2024	Yes	No
Castlerock Substation	West Wenatchee, Castlerock Street	2024	Yes	Yes
West Wenatchee Substation	Western Foothills vicinity Wenatchee	2024	No	TBD
Gorge Substation	Gorge Road, South of Chelan City	2024	Yes	Yes
Stemilt Substation	Stemilt Creek/Malaga West Vicinity	2025	No	TBD
Roses Substation	North Shore Lake Chelan, Roses Lake	2025	No	TBD
Entiat North Substation	North End of Entiat City Hwy 97A	2027	Yes	No
Mission Ridge Substation	Mission Ridge / Upper Squilchuck	2030	No	Yes
Cashmere East Substation	Cashmere East / Monitor Vicinity	2030	No	TBD
Howard Flats Substation	Chelan Airport / Howard Flats Vicinity	2029	No	Yes
Rock Island Substation	Rock Island / Malaga East Vicinity	2030	No	TBD
Notes:				
1. Year needed is based on forecasted capacity and is subject to change from year to year				
2. Transmission required (Y/N) based on if significant new transmission corridors are required				

Substation Build Activity

Station	Next Build Phase	Expected Complete
Ohme	Energized	March 2022
North Shore	Outreach and design	March – May 2022
Leavenworth (Bavarian)	Outreach and civil design	September 2022
Wenatchee (upsized)	Finalize project plan	2022
Wenatchee Foothills	Siting and utility plans	2022
Malaga/Stemilt	Site property evaluations	Ongoing

Please note:

- Schedules are subject to change (station build team is updating)
- See 2022 District Performance Plan for more details

Summary

- New construction and redevelopment remains strong
- Sustained growth in new residential meters for 3 to 5 years
- Electrical infrastructure investments timely
- Confidence levels around load growth increases with improved planning
- District utilities positioning well to meet demands of growth

Ohme Substation

Commissioned Spring 2022



Jim Graves, Substation Foreman
19 years with Chelan PUD

Questions?



Ohme 3-22



Ohme 10-21
Commissioning

