



Fish and Wildlife Program Update

July 10, 2023



Why we're here today

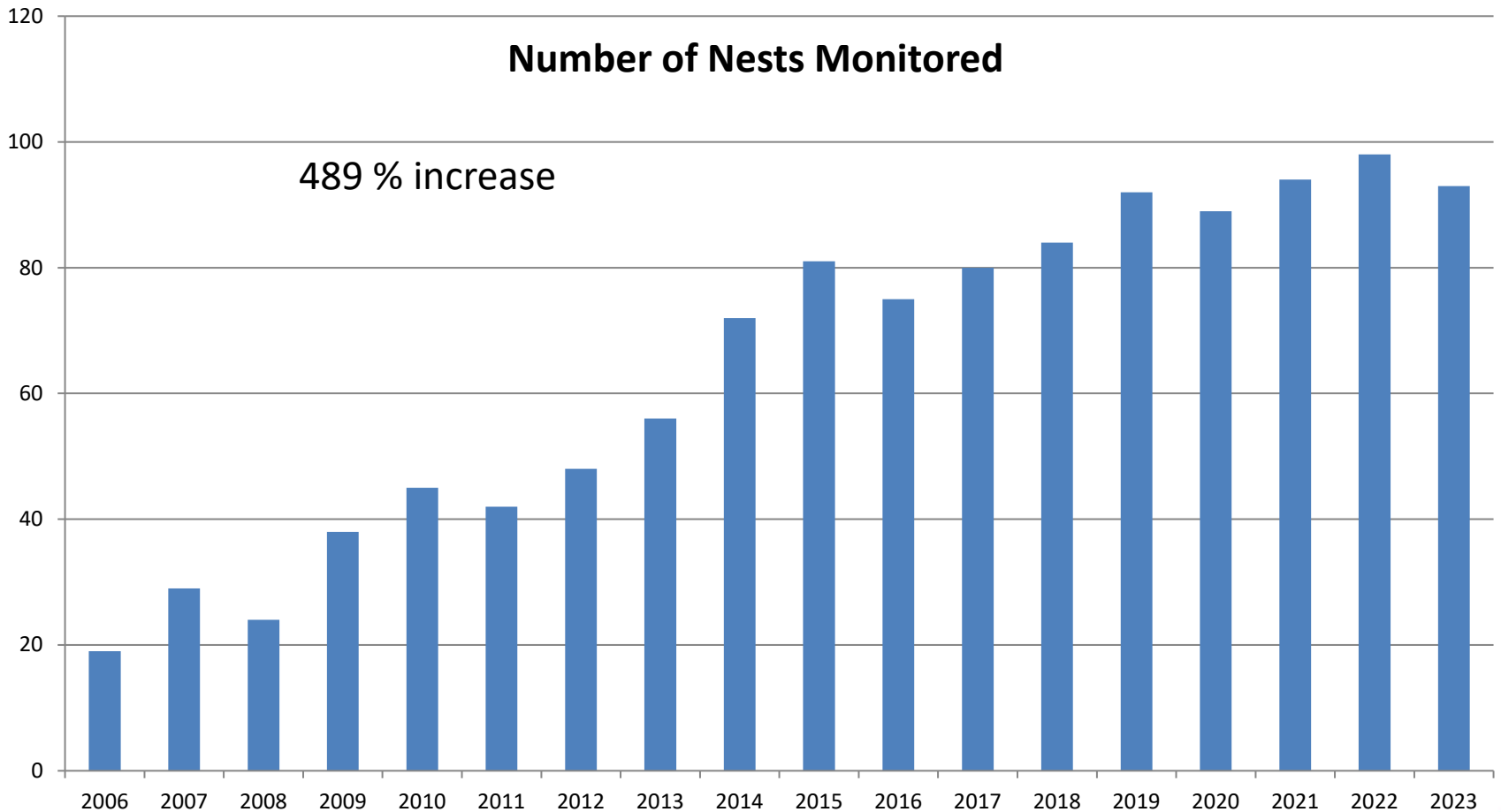
- Osprey Nest Monitoring Program
Kelly Cordell, Wildlife Biologist
- Rocky Reach HCP Confirmation Survival Study
Lance Keller, Senior Fisheries Biologist

Osprey Nest Monitoring

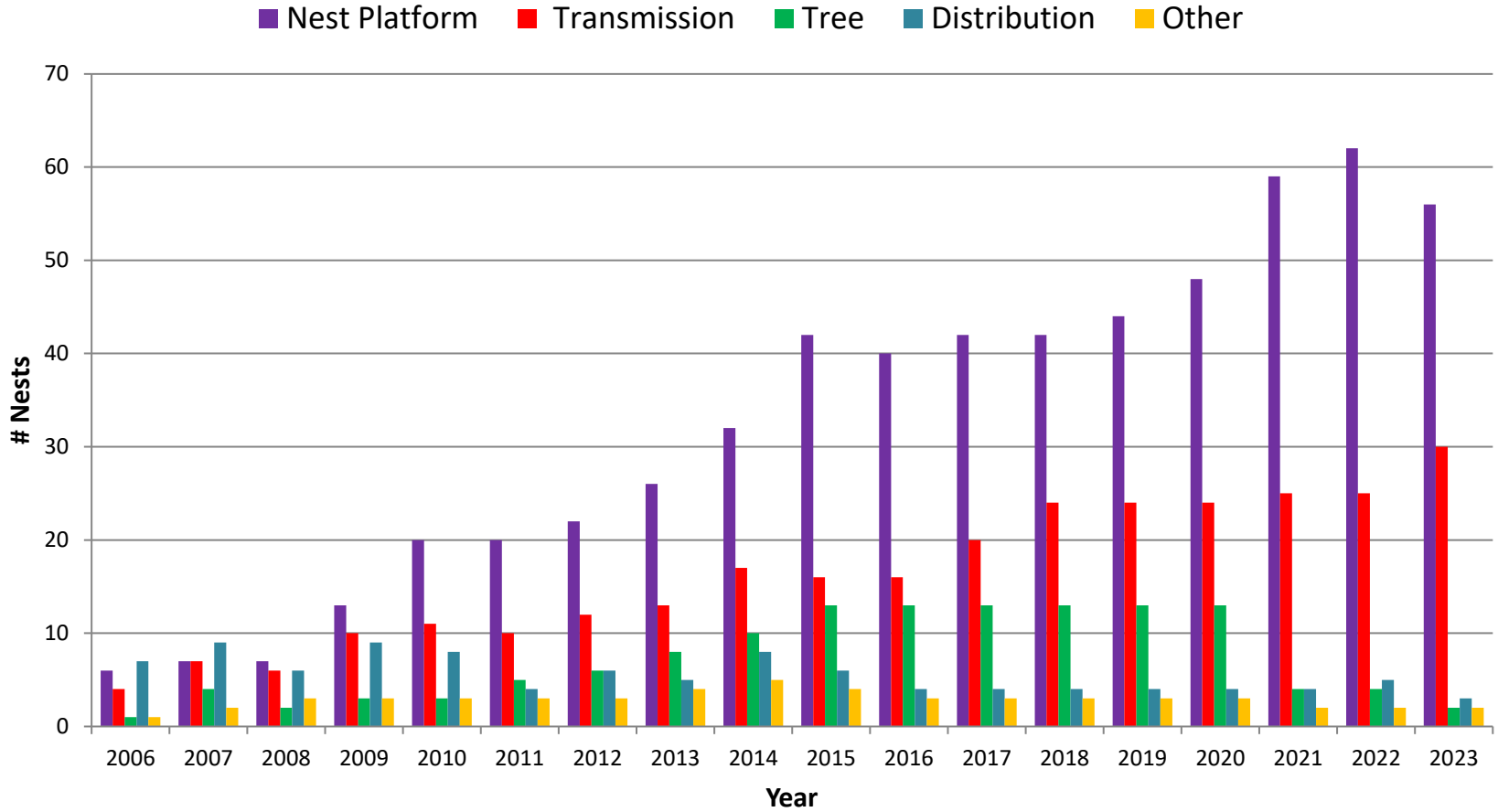
- 2006 -2023
- Increasing:
 - population
 - risk
- Managing nests



Increasing Population



Nest Locations



Increasing Risk



Osprey Nest Autopsy

Parts and Pieces	Quantity
Leather gloves	52
Bailing twine	13
Plastic bags	12
Misc. plastic (heavy)	12
Tarp/weed barrier	8
Plywood	6
Electrical wire	5
Insulation	4
Aluminum can	1
Guy wire	1
Bungee cords	1
Other misc. items (n = 13)	1 each



Managing Nest Issues



Annual Goose Deterrents

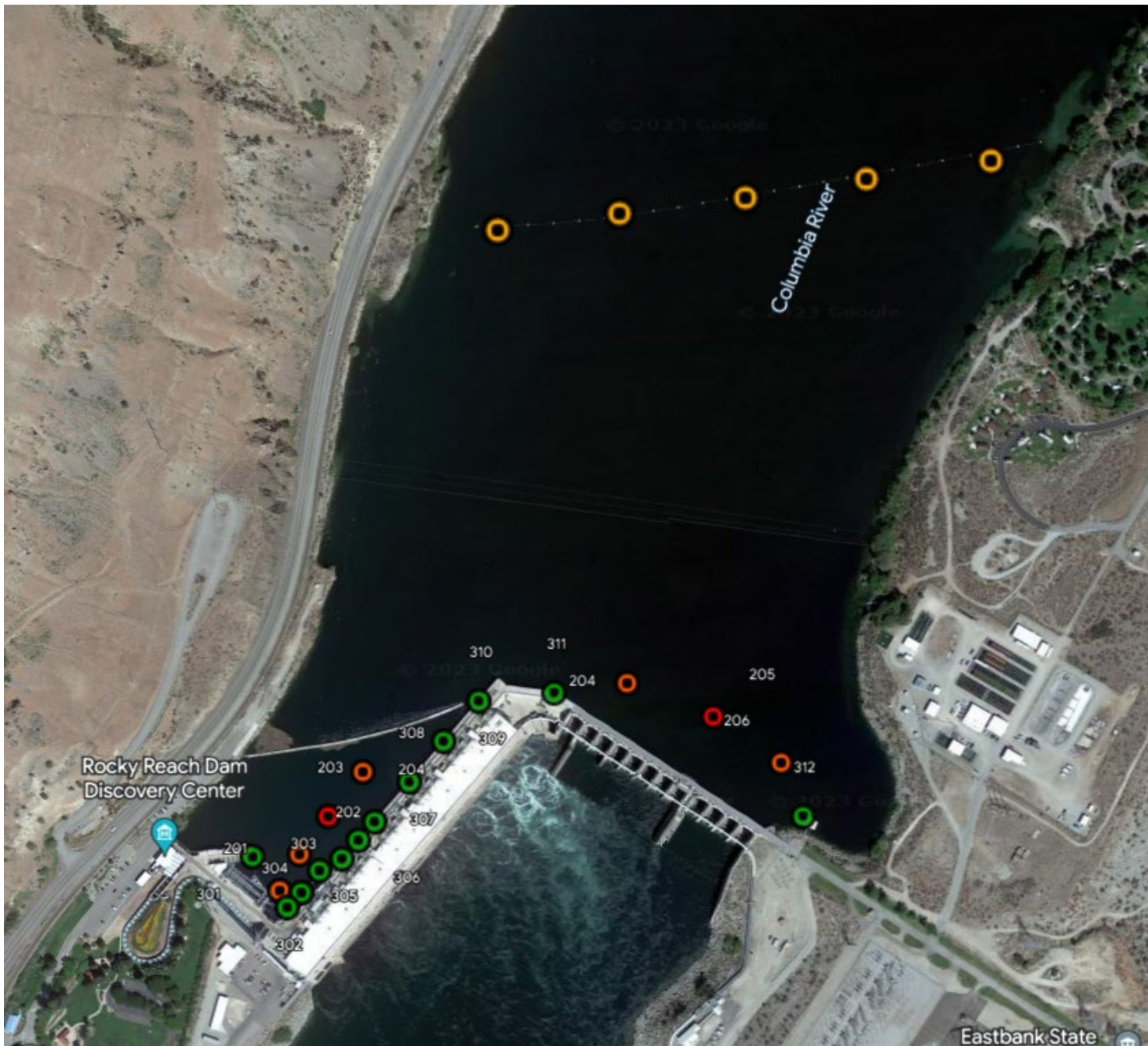


Questions



Rock Reach Habitat Conservation Plan Project Confirmation Study

- Resolution approved by BOC on October 17, 2022
- Study design occurred from December 2022-February 2023
 - Approval from HCP CC on April 7, 2023
 - All study gear deployed by contractor/divers by March 28, 2023



Rocky Reach HCP Confirmation Survival Study

Activity	Status
Collection/Transport/Tag/ Release Study Fish	First release - April 25, 2023 Last release – May 25, 2023
No. of Tags Deployed	~1,130 (Test and Control) 18 replicates
Preliminary travel time estimate from Wells tailrace RR forebay	~90.8 hours (range – 17.8 hours to 933.9 hours)
RR Project Conditions	Flow Average – 152.4 kcfs Flow Min – 46.3 kcfs Flow Max – 227.3 kcfs Spill: 0-82.8 kcfs

Next Steps

- Blue Leaf Environmental is currently processing detection data – excess of 1 million detections observed
- Receive survival results in August 2023.