

# Quarterly Electric Load Update

March 18, 2024

Presented by:

Andy Wendell, Director of Customer Service

Lyle Moore, Supervisor of Customer Service Engineering

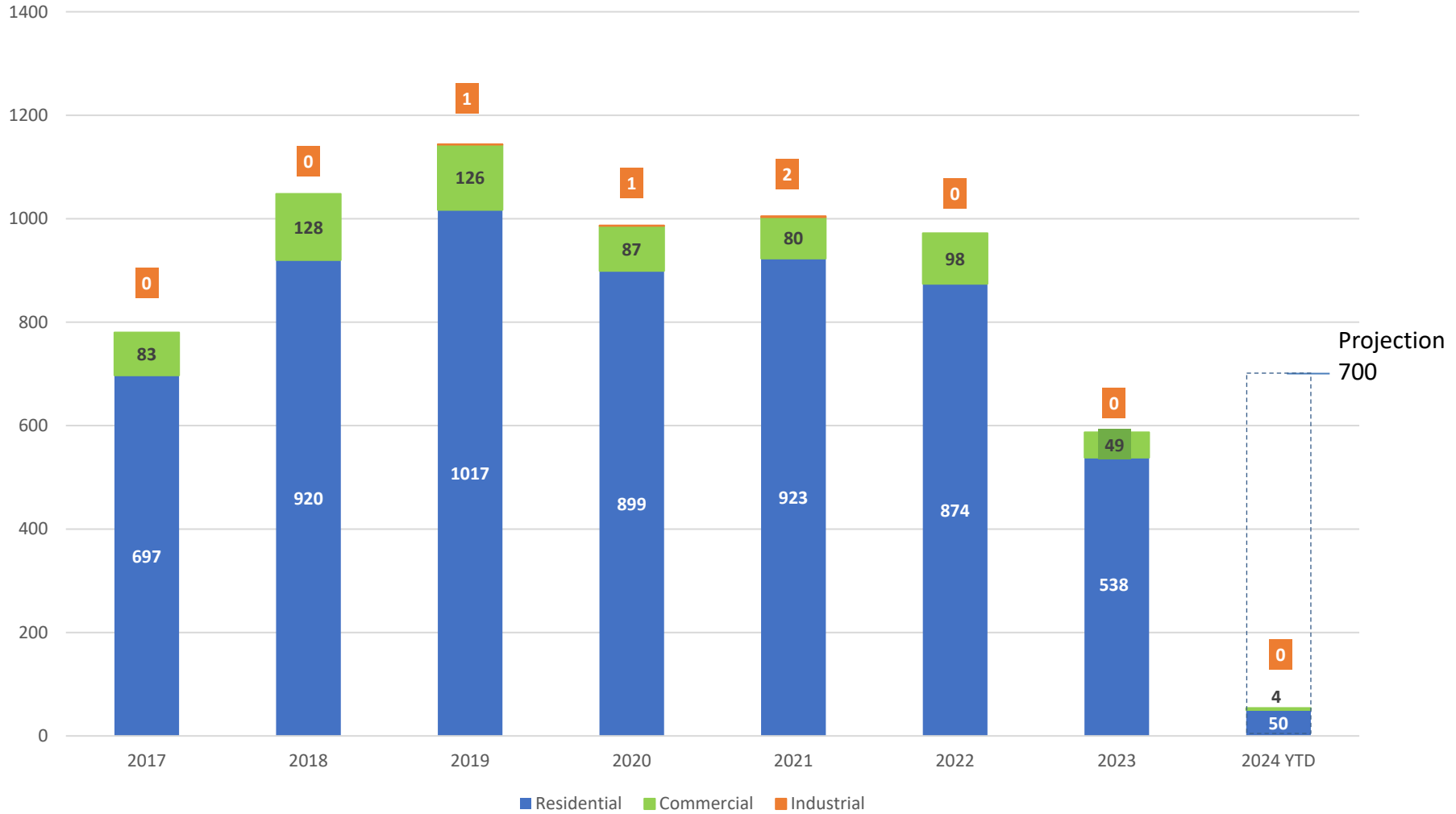


# Why we are here today

- 2024 - electric meters YTD
- Applications and inquiries
- Updated load forecast
- Winter temperatures
- Substation build update
- **No action requested today**



## New Meter Installs 2017 - 2024 YTD



# Notable applications and inquiries

- Link Transit- new electric charging infrastructure, ~ 1.2 MW ++
- New Hotel/Casino Colville Gaming LLC – 455 Wapato Lake Rd, Manson. ~ 2 MW
- Convenient store equipped with Level 3 charging, Manson ~ 1.2 MW
- The Majestic Apartments, S. Mission Wenatchee. Estimated ~ 1.3 MW (peak) 216 Units



# 10-Year Electrical Load Forecast

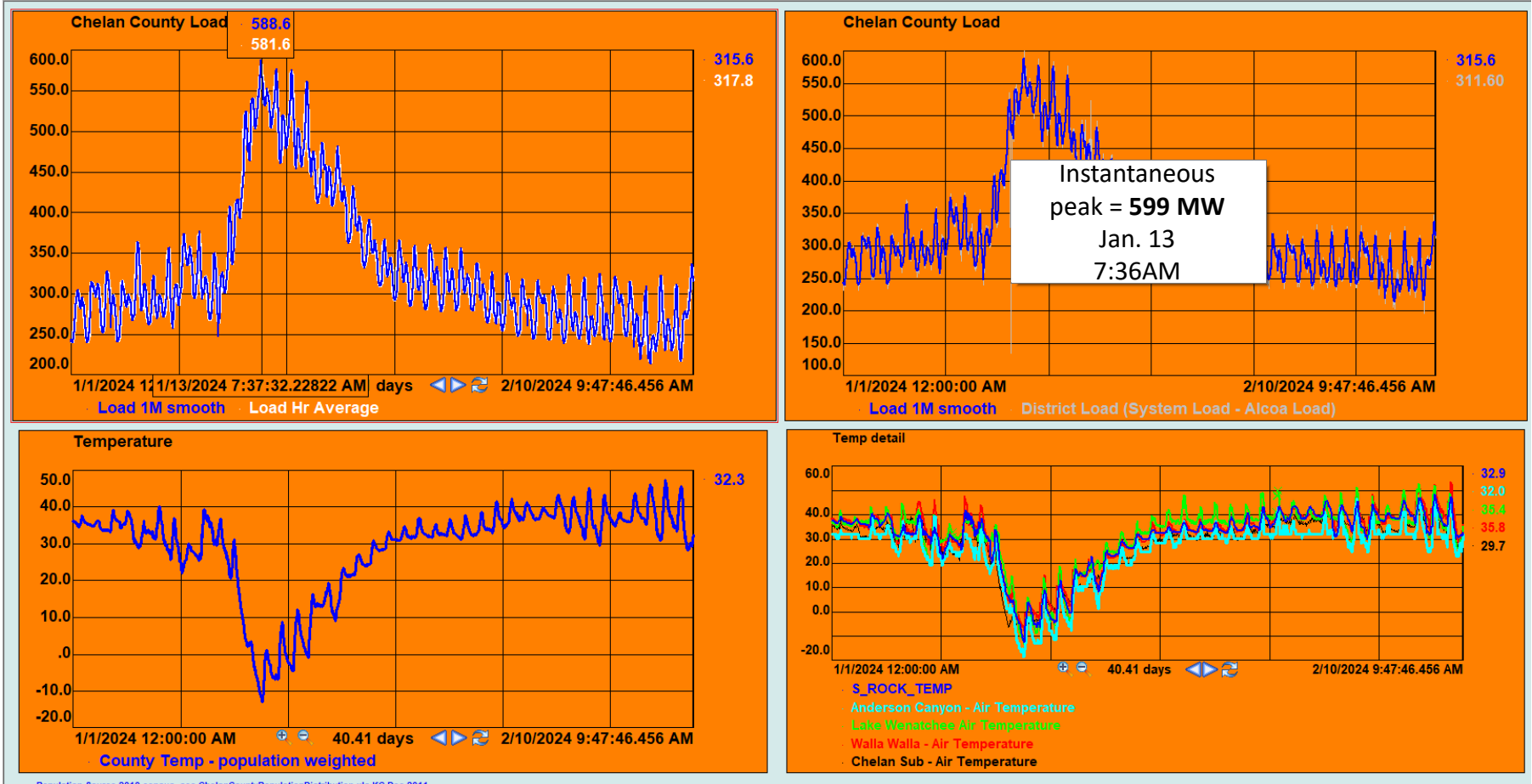
(Net of energy conservation plans & excludes new large loads)

<i>Date of Forecast</i>	<b>Base Case</b>	<i>High Case</i>	<i>Low Case</i>
Sept 2023 Annual growth rate %	32 avg MW 1.4 %	53.2 avg MW 2.3 %	13.3 avg MW 0.6 %
Dec 2023 Annual growth rate %	32 avg MW 1.4 %	53.2 avg MW 2.3 %	13.3 avg MW 0.6 %
<b>March 2024</b> Annual growth rate %	<b>32 avg MW</b> <b>1.4 %</b>	53.2 avg MW 2.3 %	13.3 avg MW 0.6 %



Notes: Load forecast team scheduled to publish a new 10-year forecast August/September of 2024

# 2024 Winter Temperatures Result In New System Peaks Demand On Energy



Note: Previous instantaneous system peak was set on Dec. 22, 2022 at 590 MW

# Winter Cold Temperatures

## Key Areas Impacted -

Extreme cold temperatures reached – 14 F. in Chelan County on January 13, 2024

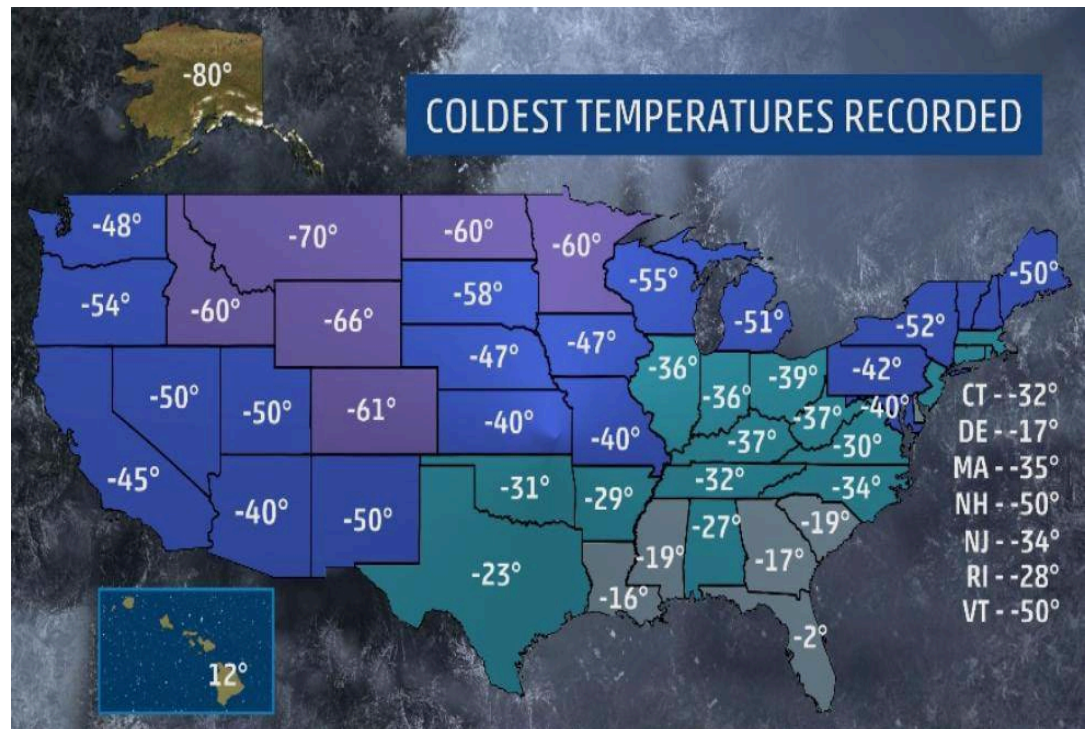
New instantaneous peak demand measured 599.6 MW occurring on Jan 13<sup>th</sup> 2024

District system interruptions in Lake Wenatchee and Lake Chelan-

Lake Chelan- South Shore from State park to 25-mile creek

~1,337 customer impacted

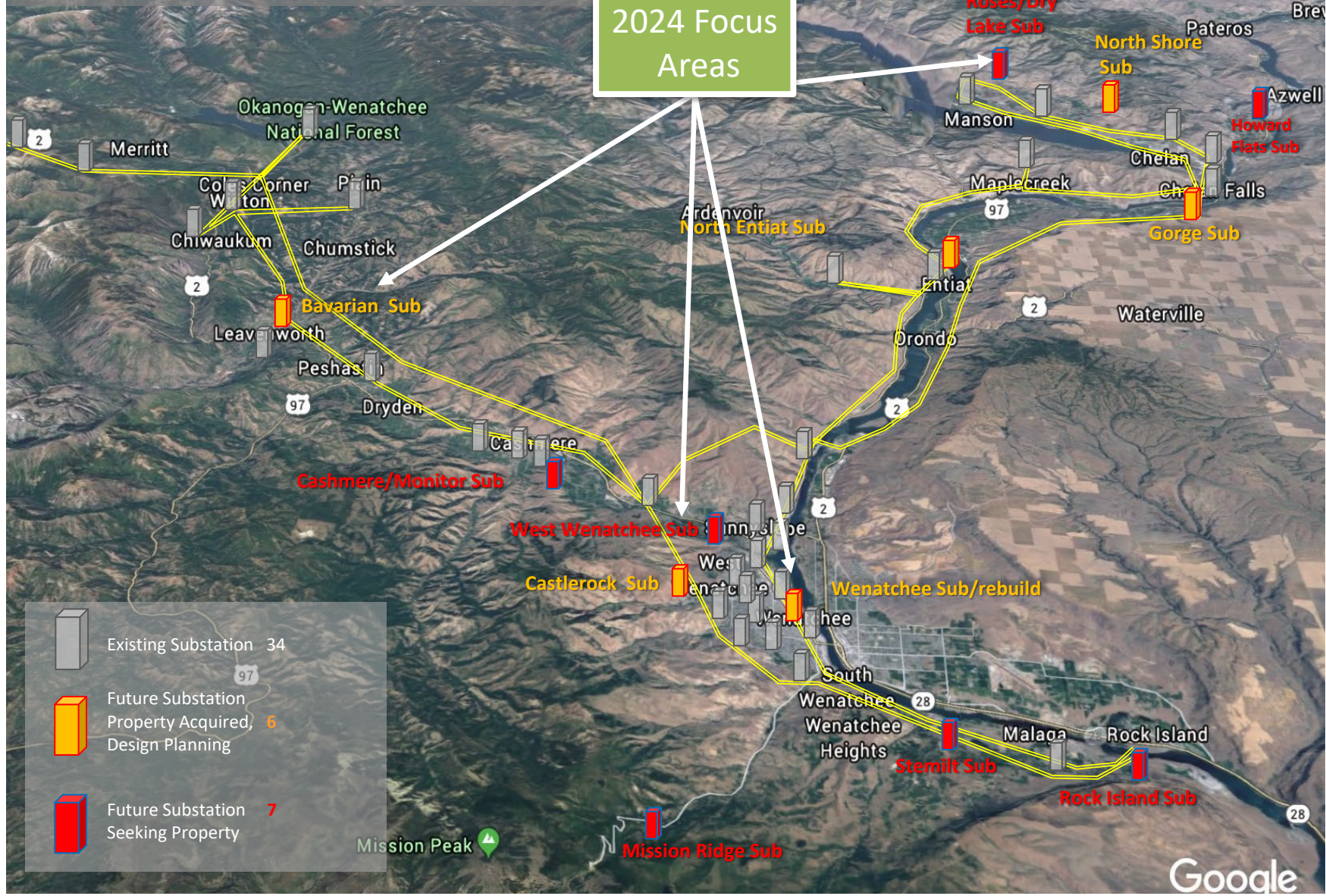
Equipment failure impacting the submersible cable from Manson to Yacht Club.



# Distribution Substation Planning

Current & Future Locations (updated April 2023)

2024 Focus Areas



- Existing Substation 34
- Future Substation Property Acquired 6
- Future Substation Seeking Property 7

Google





# North Shore Substation Site Progression

March 8, 2024- North Shore Sub



# Current Substation Build Activity

Station	Next Phase	Est. Phase Completion
North Shore	Energization planned for 3 <sup>rd</sup> week in April 2024	Q2 - 2024
Leavenworth (Bavarian)	Design at 90%. Enviro & permitting cont.	Q2 - 2024
Wenatchee (upsized)	Developing options	Q3 - 2024
Wenatchee Foothills (west Wenatchee)	Narrowing site selection	Q2-2024
Roses, Manson vicinity	Site property evaluations	2024
Various Station Rehab Planning	Sunnyslope, South Shore, Summit, L. Wenatchee & Western	2024

*Please note:*

- Schedules are subject to change (station build team is updating)
- See 2024 District Performance Plan for more details

# Summary

- Slower new construction of residential homes in Q1 2024.
- New development planning occurring in Entiat, Chelan and Wenatchee.
- Reduced forecast of new electrical meters to ~700 in 2024.
- New electrical vehicle charging station infrastructure emerging in all areas.
- No material shift away from substation build plan.
- Planned utility infrastructure investments are positioned well to meet demands of growth in water, electric, wastewater, and fiber.



# Questions?



Maintenance Dispatcher Michelle Dennis working in the New Service Center Dispatch area

# Chelan PUD Substation Planning

Updated March 2023

Substation & Vicinity		Year Planned <sub>1</sub>	Property Acquired	Transmission Required <sup>2</sup>
North Shore Substation	Lake Chelan, Henderson Road	2023	Yes	No
Bavarian Substation	Chumstick Highway Leavenworth	2025	Yes	Yes
Wenatchee Substation	Worthen Street Wenatchee	2026	Yes	No
Castlerock Substation	West Wenatchee, Castlerock Street	2026	Yes	Yes
West Wenatchee Substation	Western Foothills vicinity Wenatchee	2026	No	TBD
Gorge Substation	Gorge Road, South of Chelan City	2027	Yes	Yes
Stemilt Creek Substation	Stemilt Creek/Malaga West Vicinity	2027	No	TBD
Roses Substation	North Shore Lake Chelan, Roses Lake	2026	No	TBD
Entiat North Substation	North End of Entiat City Hwy 97A	2028	Yes	No
Mission Ridge Substation	Mission Ridge / Upper Squilchuck	2030	No	Yes
Cashmere East Substation	Cashmere East / Monitor Vicinity	2037	No	TBD
Howard Flats Substation	Chelan Airport / Howard Flats Vicinity	2029	No	Yes
Rock Island Substation	Rock Island / Malaga East Vicinity	2030	No	TBD
Hay Canyon Cashmere Substation	Cashmere North Vicinity	2030	No	TBD

Notes:

1. Year planned is based on forecasted capacity and build capability and is subject to change from year to year depending on load growth
2. Transmission required (Y/N) based on if significant new transmission corridors are required