

Quarterly Electric Load Update

August 1, 2022



Rendering of Riverfront Village – currently under construction (454 Residential units)

Presented by:
Andy Wendell, Director of Customer Service
Chad Rissman, Director of Engineering

Why We Are Here Today

- 2022 new services and meters installed
- Growth for 2022 & Load forecast update
- County wide development & large loads
- Substation build status update

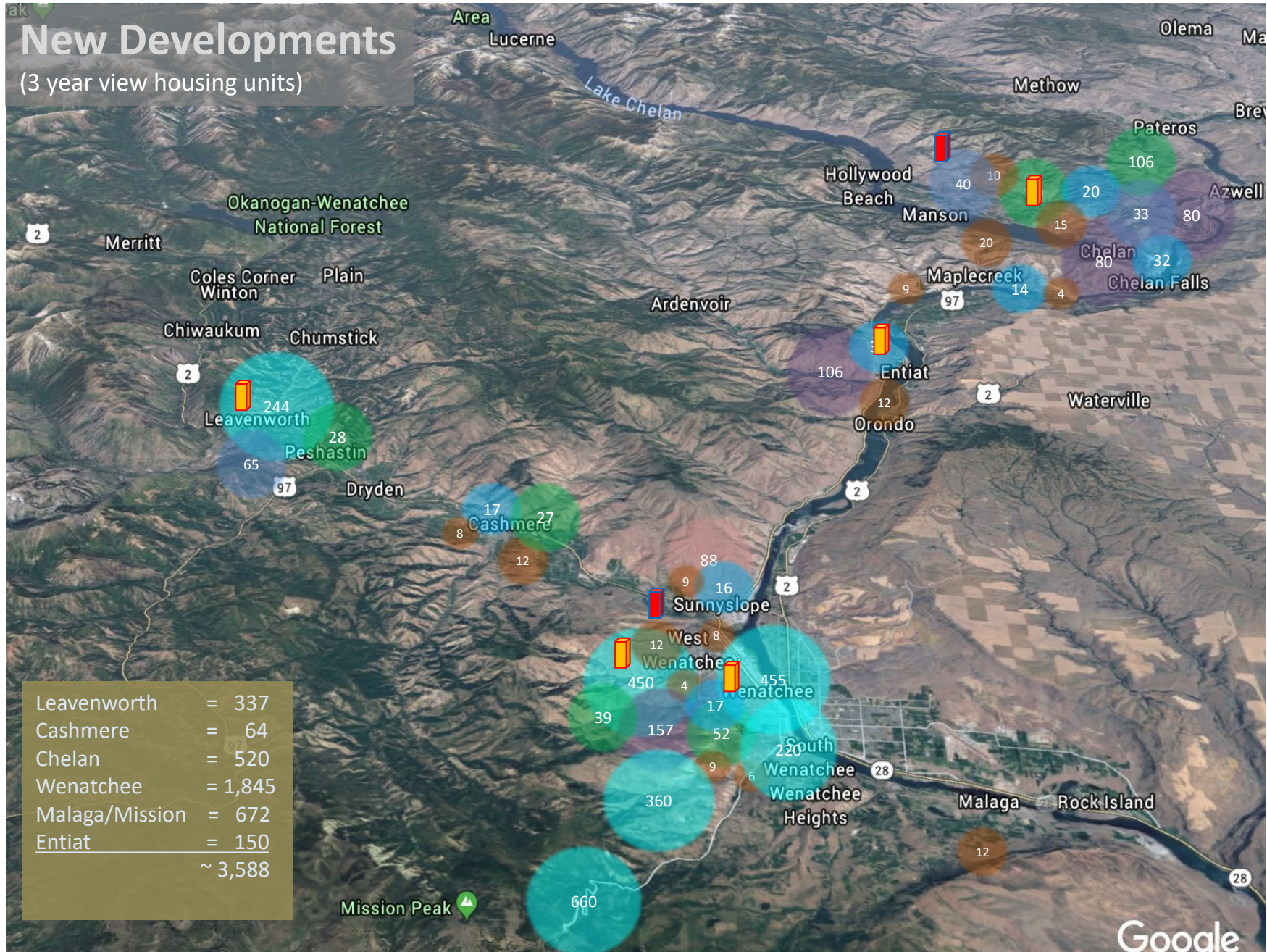
- No action requested today

Electric Meter Installs 2017 – 2022 YTD



New Developments

(3 year view housing units)



Leavenworth	=	337
Cashmere	=	64
Chelan	=	520
Wenatchee	=	1,845
Malaga/Mission	=	672
Entiat	=	150
		~ 3,588

Google



CHELAN COUNTY

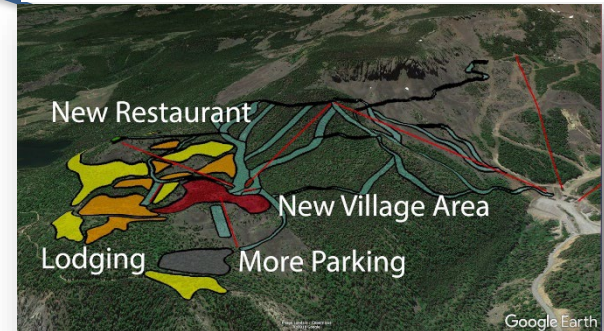
Future Growth Projects Increasing Local Load

Malaga Vicinity



*Electrical Load to be determined
~ 100 + MW (3-to-5-year projection)*

Mission Ridge Expansion



~5- 10 MW

*(3-to-10-year
projection)*

Wenatchee Downtown




~\$300M investments (5-to-10-year projection)

10-Year Electrical Load Forecast

(net of energy conservation plans & excludes new large loads)

Date of Forecast	Base Case	High Case	Low Case
Oct 2021 Annual growth rate	31 aMW * 1.4 %	107 aMW 4.3 %	16 aMW 0.7 %
April 2022 Annual growth rate	31 aMW * 1.4 %	107 aMW 4.3 %	16 aMW 0.7 %
July 2022 Annual growth rate	31 aMW * 1.4 % <i>DF 18aMW</i>	107 aMW 4.3 %	16 aMW 0.7 %

Current
forecast

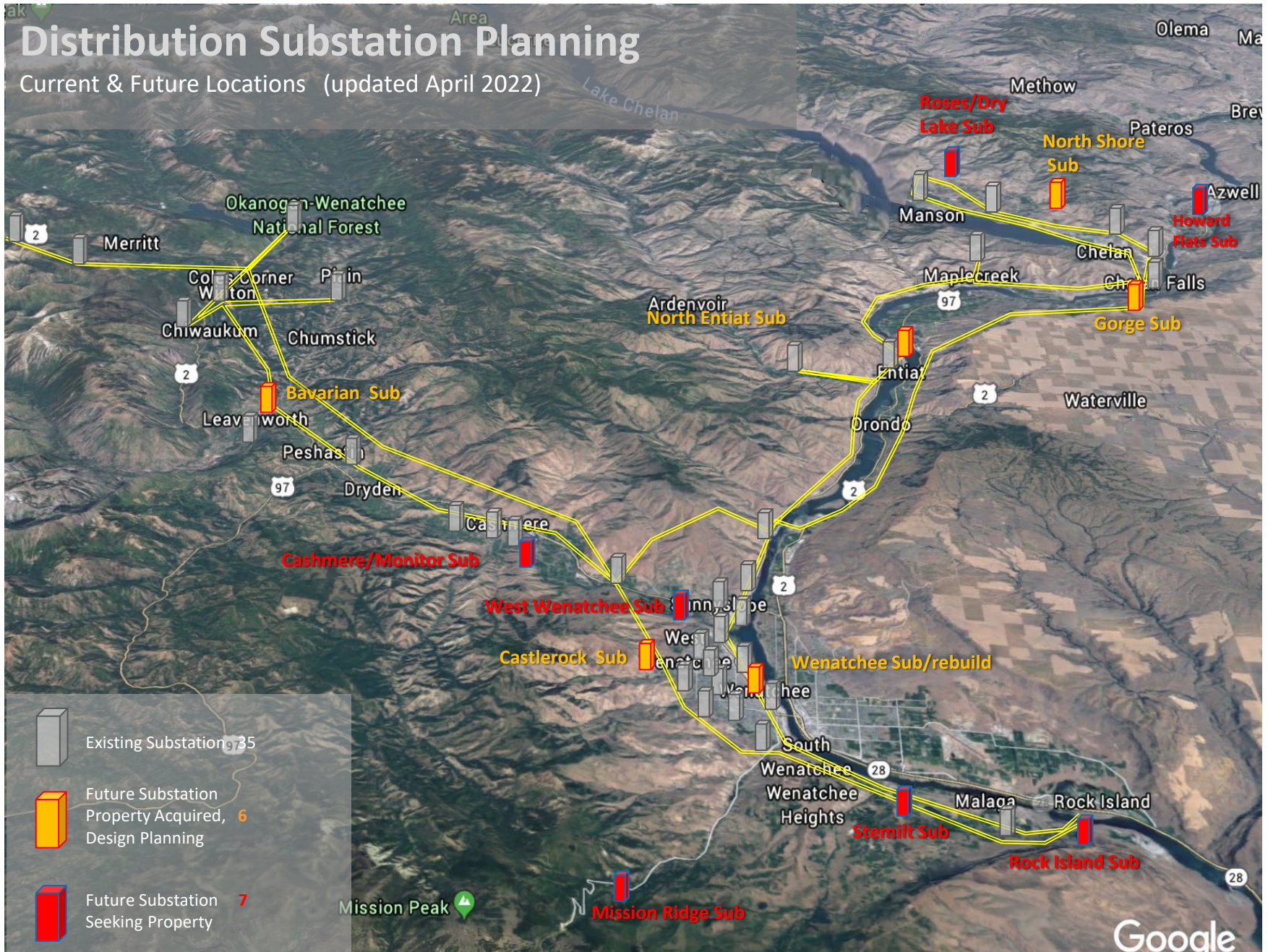


Note:

Increase in low case driven by knowns in Diamond Foundry, residential and commercial sectors growth, and more confidence around electrical vehicle adoption rates

Distribution Substation Planning

Current & Future Locations (updated April 2022)



Google



CHELAN COUNTY

Chelan PUD Substation Planning Updated April 2022

Substation & Vicinity		Year needed ¹	Property Acquired	Transmission Required ²
North Shore Substation	Lake Chelan, Henderson Road	2023	Yes	No
Bavarian Substation	Chumstick Highway Leavenworth	2023	Yes	Yes
Wenatchee Substation	Worthen Street Wenatchee	2024	Yes	No
Castlerock Substation	West Wenatchee, Castlerock Street	2024	Yes	Yes
West Wenatchee Substation	Western Foothills vicinity Wenatchee	2024	No	TBD
Gorge Substation	Gorge Road, South of Chelan City	2024	Yes	Yes
Stemilt Substation	Stemilt Creek/Malaga West Vicinity	2025	No	TBD
Roses Substation	North Shore Lake Chelan, Roses Lake	2025	No	TBD
Entiat North Substation	North End of Entiat City Hwy 97A	2027	Yes	No
Mission Ridge Substation	Mission Ridge / Upper Squilchuck	2030	No	Yes
Cashmere East Substation	Cashmere East / Monitor Vicinity	2030	No	TBD
Howard Flats Substation	Chelan Airport / Howard Flats Vicinity	2029	No	Yes
Rock Island Substation	Rock Island / Malaga East Vicinity	2030	No	TBD
Notes:				
1. Year needed is based on forecasted capacity and is subject to change from year to year				
2. Transmission required (Y/N) based on if significant new transmission corridors are required				

Current Substation Build Activity

Station	Next Build Phase	Est. Phase Completion
North Shore	Construction	Q2 - 2023
Leavenworth (Bavarian)	Outreach and civil design	Q4 - 2022
Wenatchee (upsized)	Finalize project plan	Q4 - 2022
Wenatchee Foothills	Siting and utility plans	Q3 - 2023
Malaga/Stemilt	Site property evaluations	Ongoing
Various Station Rehab	Miller, South Shore, Summit & Western	Ongoing

Please note:

- Schedules are subject to change (station build team is updating)
- See 2022 District Performance Plan for more details

Summary

- New construction and redevelopment remains strong.
- Sustained growth in new residential meters for 3 to 5 years
- Electrical substations and infrastructure investments timely
- As certainty around new large loads increases, revised forecast will be forthcoming
- District retail utilities positioning well to meet demands of growth
- Load growth projections intended for organic as large loads have infrastructure improvements tied to them.

Questions?

