

Quarterly Electric Load Update



June 17, 2024

Lyle Moore

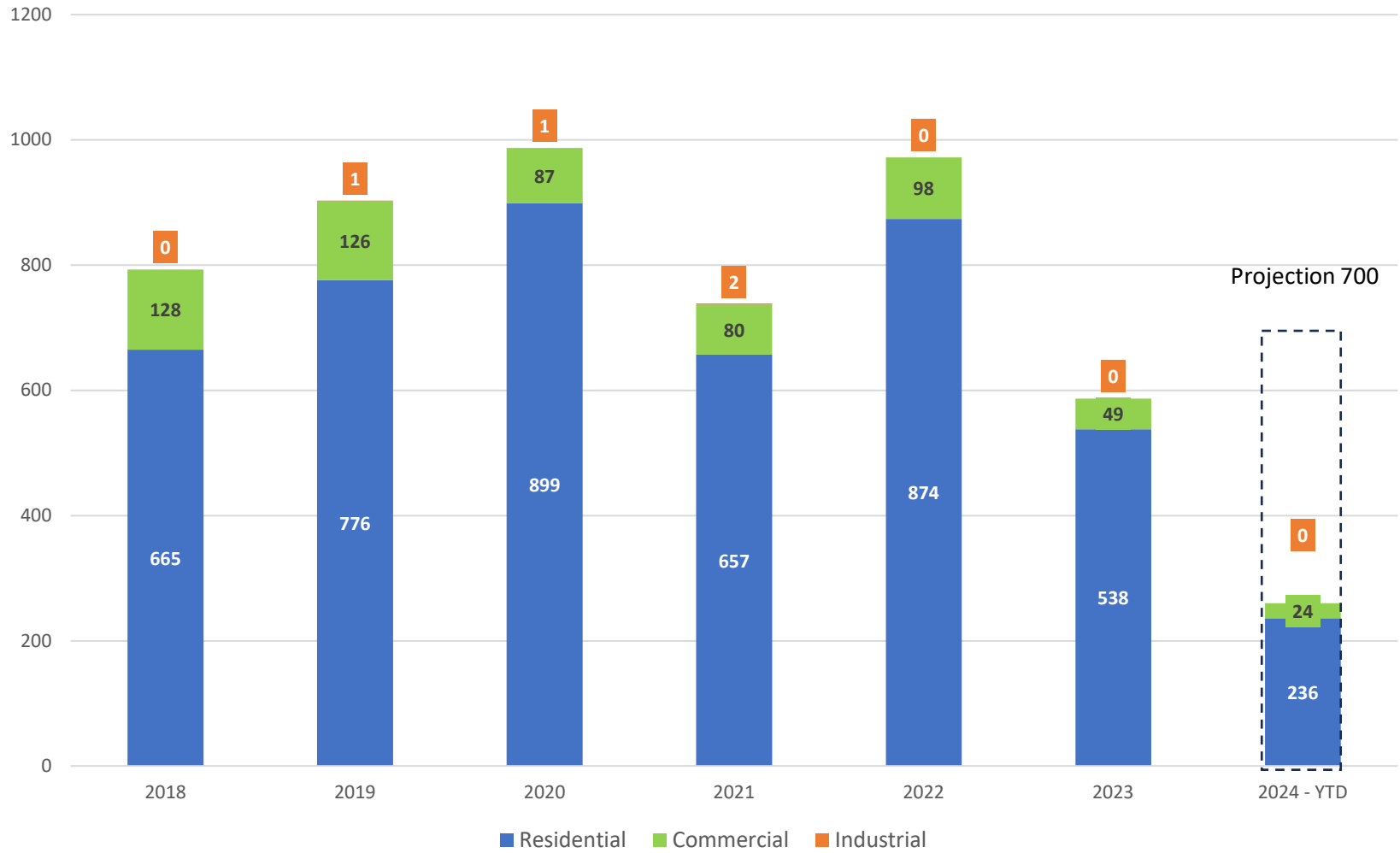
Customer Service Engineering Supervisor

Why we are here today

- 2024 - electric meters YTD
- Applications and inquiries
- Updated load forecast
- Substation build update
- **No action requested today**

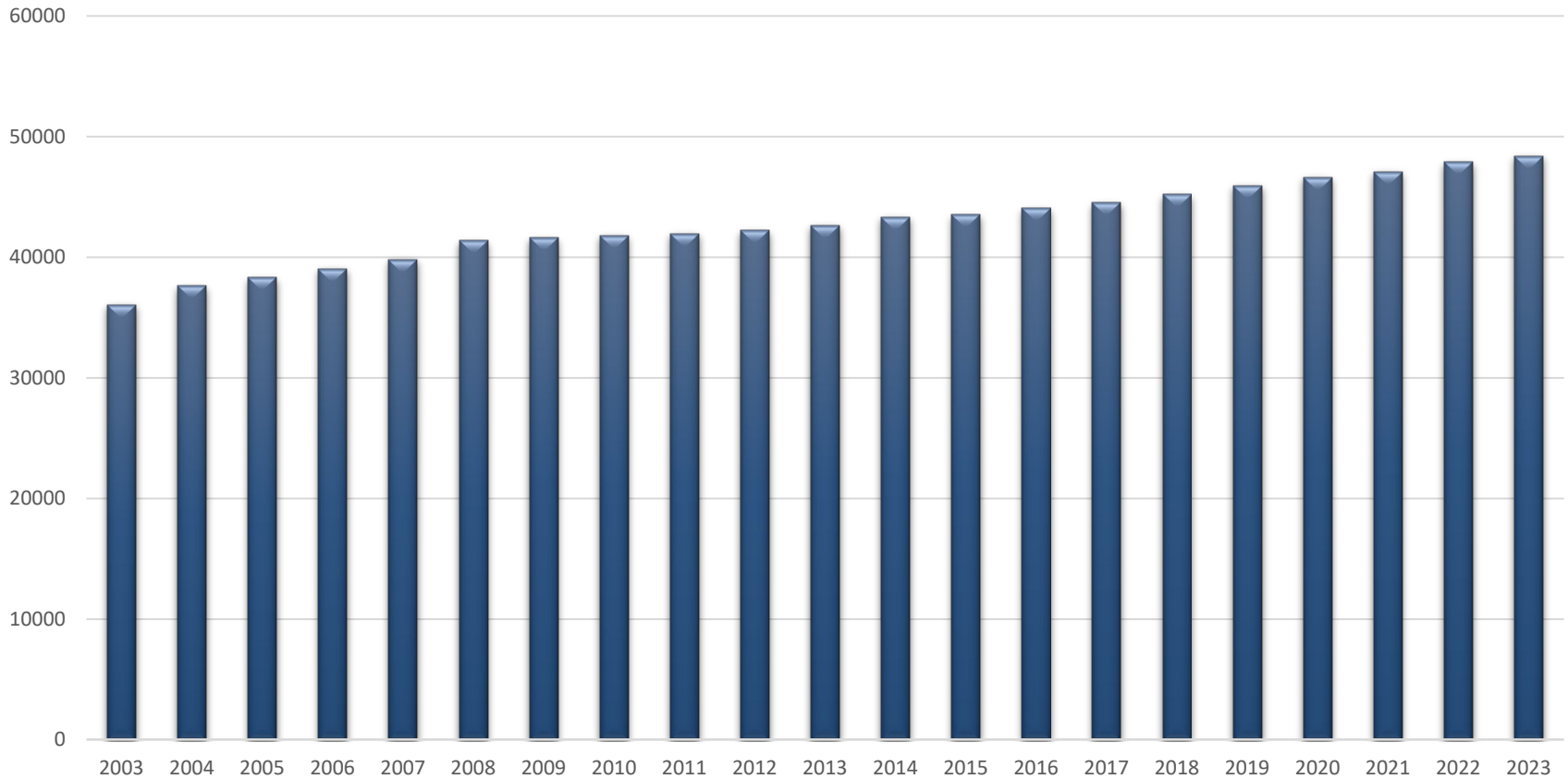


New Meter Installs 2018 - 2024 YTD



Historical electric growth trend

20-year Electric Services Trend



Notable applications and inquiries

- Link Transit- new electric charging infrastructure, Wenatchee, ~ 1.2 MW ++
- Hotel/Casino, Convenience Store, Colville Gaming LLC – Manson. ~ 3.2 MW
- Diamond Foundry expansion, 2-9 MW
- The Majestic Apartments, S. Mission Wenatchee. Estimated ~ 1.3 MW (peak) 216 Units



10-Year Electrical Load Forecast

(Net of energy conservation plans & excludes new large loads)

<i>Date of Forecast</i>	Base Case	<i>High Case</i>	<i>Low Case</i>
Sept 2023 Annual growth rate %	32 avg MW 1.4 %	53.2 avg MW 2.3 %	13.3 avg MW 0.6 %
Dec 2023 Annual growth rate %	32 avg MW 1.4 %	53.2 avg MW 2.3 %	13.3 avg MW 0.6 %
June 2024 Annual growth rate %	32 avg MW 1.4 %	53.2 avg MW 2.3 %	13.3 avg MW 0.6 %

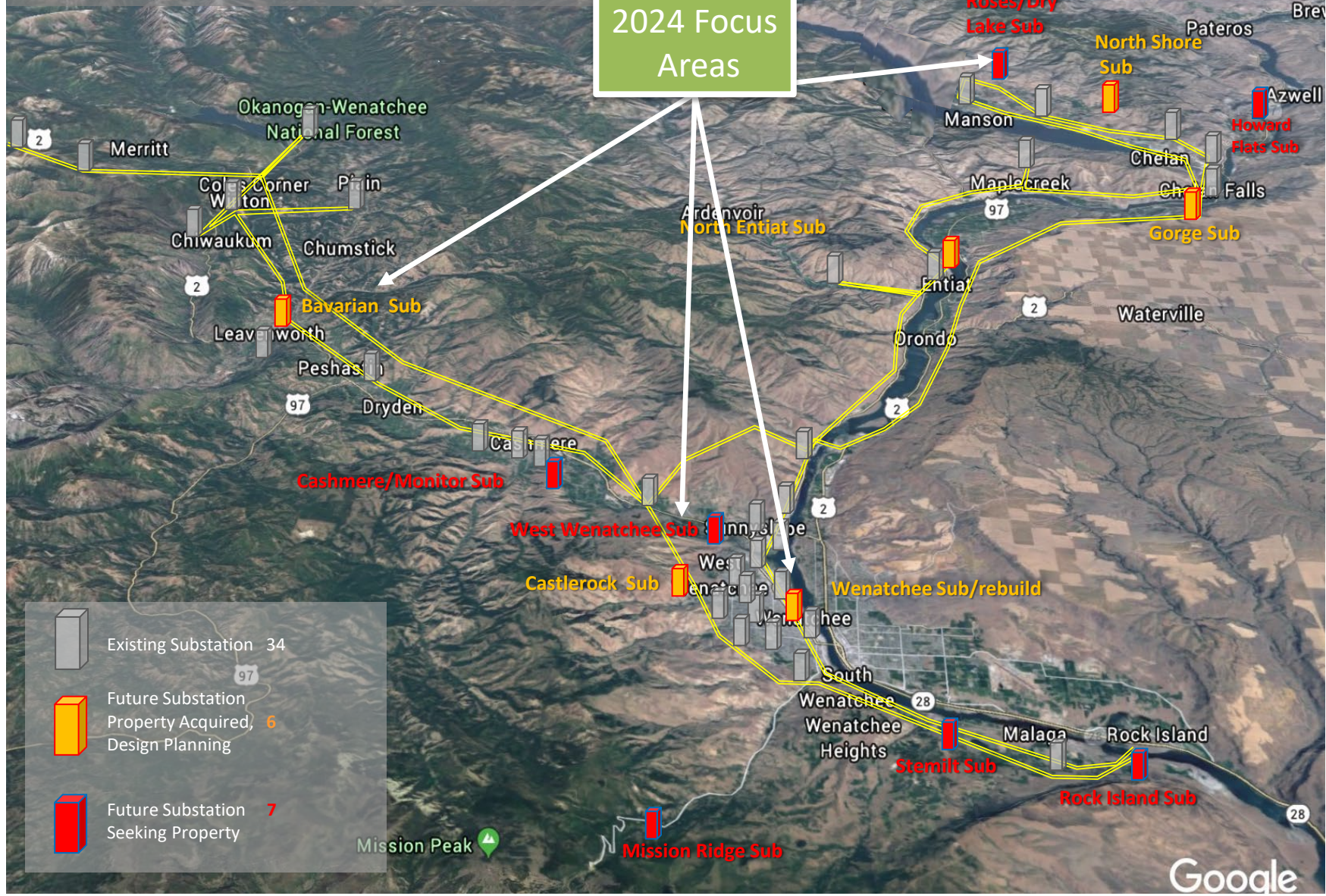




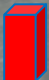
Notes: Load forecast team scheduled to publish a new 10-year forecast July/August of 2024

Distribution Substation Planning

Current & Future Locations (updated April 2023)

2024 Focus Areas



-  Existing Substation 34
-  Future Substation Property Acquired 6
-  Future Substation Seeking Property 7

Google



Current Substation Build Activity

Station	Next Phase	Est. Phase Completion
North Shore	Energization (work schedule is delaying until late June)	Q2 - 2024
Leavenworth (Bavarian)	Design at 90%. Enviro & permitting cont.	Q2 - 2024
Wenatchee (upsized)	Developing options	Q3 - 2024
Wenatchee Foothills (west Wenatchee)	Narrowing site selection	Q2-2024
Roses, Manson vicinity	Site property evaluations	2024
Various Station Rehab Planning	Sunnyslope, South Shore, Summit, L. Wenatchee & Western	2024

Please note:

- Schedules are subject to change (station build team is updating)
- See 2024 District Performance Plan for more details

Summary



- Slower residential and increased commercial/infrastructure construction in Q2 2024.
- New development planning occurring in Entiat, Chelan and Wenatchee.
- Forecasting new electrical meters ~700 in 2024.
- New electrical vehicle charging station infrastructure emerging in all areas.
- No material shift away from substation build plan.
- Planned utility infrastructure investments are positioned well to meet demands of growth in water, electric, wastewater, and fiber.

Questions?



Chelan PUD Substation Planning

Updated March 2023

Substation & Vicinity		Year Planned ₁	Property Acquired	Transmission Required ²
North Shore Substation	Lake Chelan, Henderson Road	2023	Yes	No
Bavarian Substation	Chumstick Highway Leavenworth	2025	Yes	Yes
Wenatchee Substation	Worthen Street Wenatchee	2026	Yes	No
Castlerock Substation	West Wenatchee, Castlerock Street	2026	Yes	Yes
West Wenatchee Substation	Western Foothills vicinity Wenatchee	2026	No	TBD
Gorge Substation	Gorge Road, South of Chelan City	2027	Yes	Yes
Stemilt Creek Substation	Stemilt Creek/Malaga West Vicinity	2027	No	TBD
Roses Substation	North Shore Lake Chelan, Roses Lake	2026	No	TBD
Entiat North Substation	North End of Entiat City Hwy 97A	2028	Yes	No
Mission Ridge Substation	Mission Ridge / Upper Squilchuck	2030	No	Yes
Cashmere East Substation	Cashmere East / Monitor Vicinity	2037	No	TBD
Howard Flats Substation	Chelan Airport / Howard Flats Vicinity	2029	No	Yes
Rock Island Substation	Rock Island / Malaga East Vicinity	2030	No	TBD
Hay Canyon Cashmere Substation	Cashmere North Vicinity	2030	No	TBD

Notes:

1. Year planned is based on forecasted capacity and build capability and is subject to change from year to year depending on load growth
2. Transmission required (Y/N) based on if significant new transmission corridors are required