

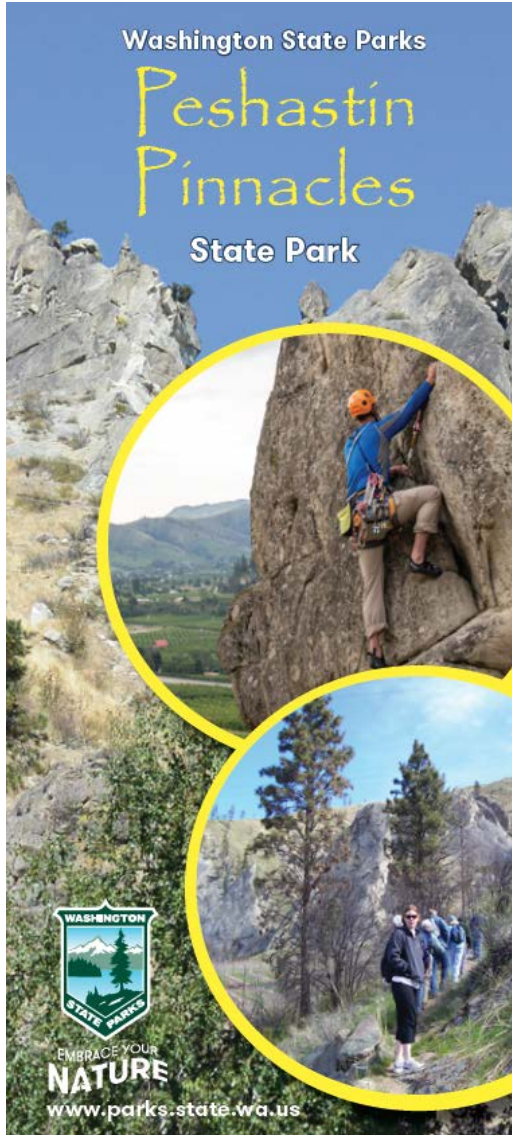
Peshastin Pinnacles Transmission

Update March 30, 2020



No Action Required

Peshastin Pinnacles



- 34-acre park is popular with hikers and climbers
- Park is named for its “pinnacles,” or unique sandstone formations
- Rock formations are thought to be about 46 million years old
- The formations are a Traditional Cultural Property (TCP)

NERC Transmission Evaluation

October 7, 2010

The image shows the cover of a report from the North American Electric Reliability Corporation (NERC). The top left features the NERC logo in large, bold, black letters, with a blue horizontal bar underneath. Below the logo, the text "NORTH AMERICAN ELECTRIC RELIABILITY CORPORATION" is written in a smaller, black, sans-serif font. The background of the cover is a light blue and white photograph of high-voltage power lines and towers. A thick orange horizontal line runs across the middle of the cover. Below this line, the title "Recommendation to Industry" is written in a large, blue, sans-serif font. Underneath the title, the subtitle "Consideration of Actual Field Conditions in Determination of Facility Ratings" is written in a smaller, blue, sans-serif font. In the bottom right corner of the cover, there is a small, rectangular box containing the text "alert-header-email-8".

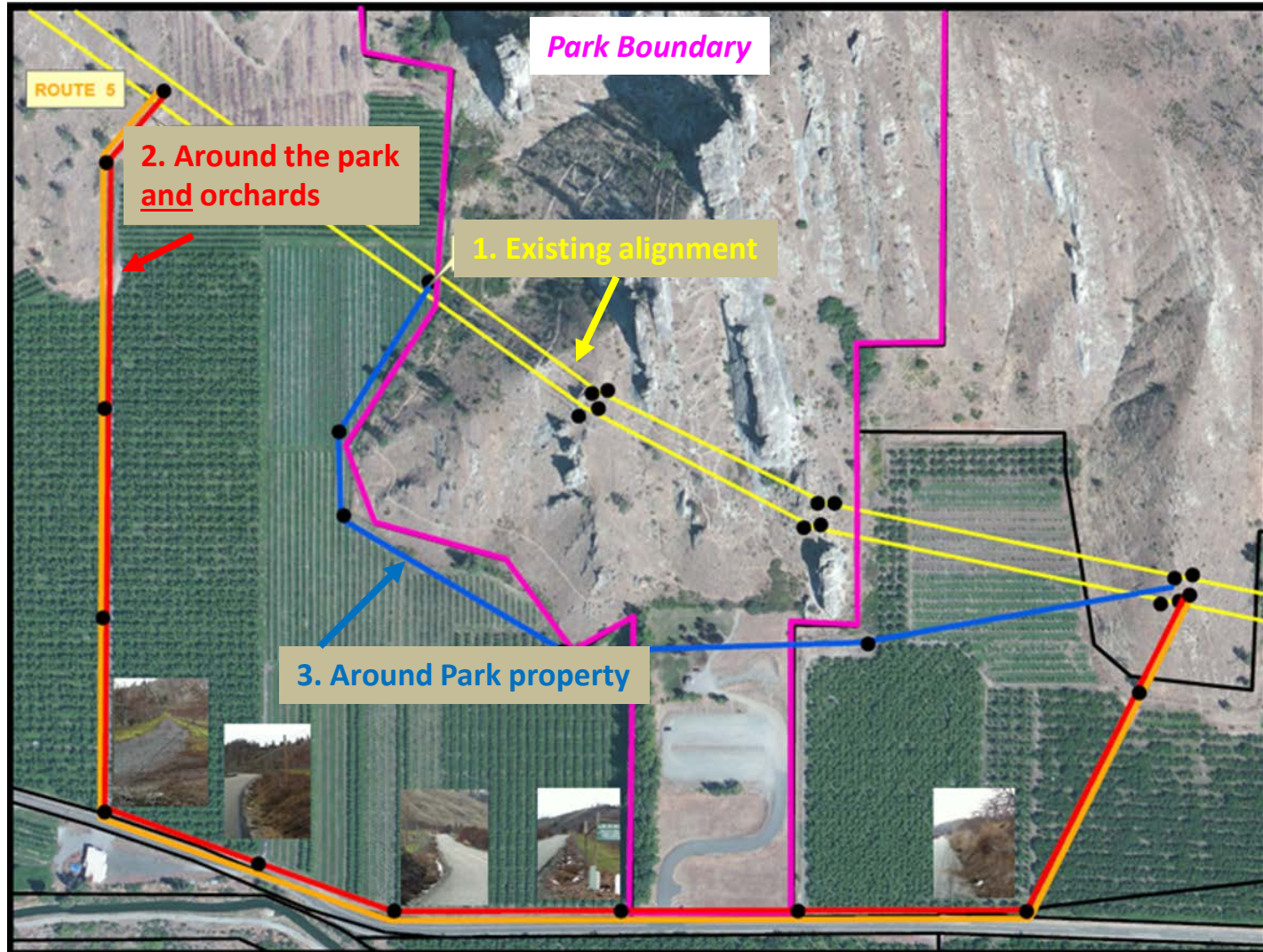
NERC
NORTH AMERICAN ELECTRIC
RELIABILITY CORPORATION

Recommendation to Industry
Consideration of Actual Field Conditions in Determination of
Facility Ratings

alert-header-email-8

- 2011 – 2013 Chelan PUD evaluated all transmission lines
- Last remaining mitigations on networked transmission are in Pinnacles State Park
- Need to replace structures in the park due to inadequate clearance

Alternatives Analysis



Basis for Decision to Reroute

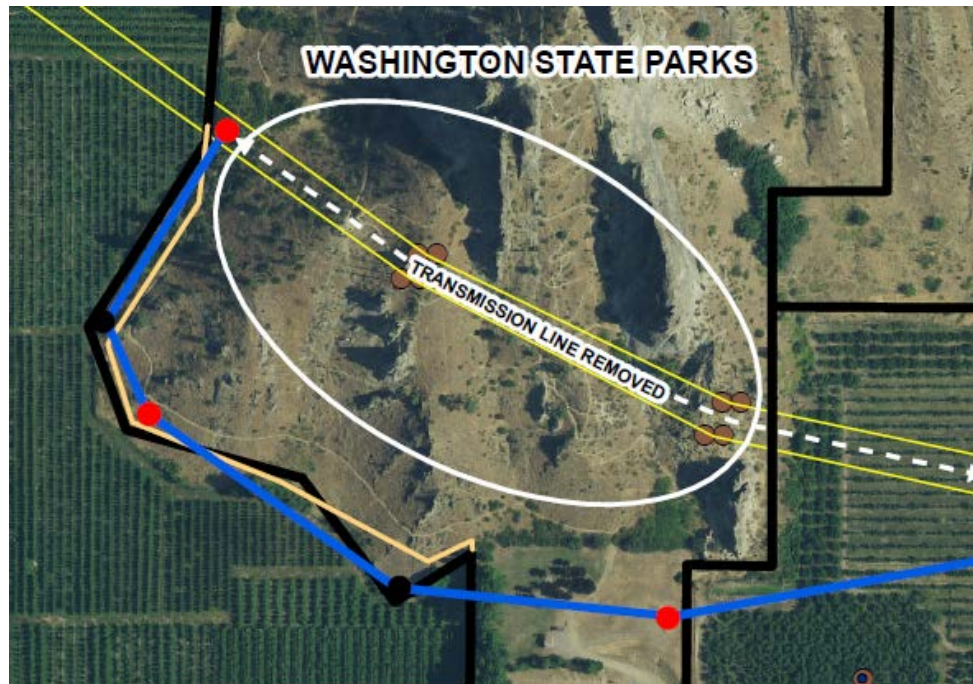
- Risk of damage to rock formations
- Impacts to other key stakeholders should damage occur
 - Colville Confederated Tribes
 - State Parks
 - Public
- Stewardship – Protect and enhance natural resources affected by District activities
- Better access to transmission structures in the future
- Potential litigation cost
- Cost effectiveness analysis comparing options & risks

Here for you, providing the best for the most for the longest – chelanpud.org



Rerouting the Line

- Worked with land owners and Washington State Parks to obtain easements
- Obtained construction permit from Washington State Parks
- Two construction windows, however the park is closed May 1 through completion of the project
 - Construction window 1 : May 1 – July 31
 - Construction window 2: October 1 – November 30
- Construction windows valid for both 2020 and 2021
- Goal is to complete all work in 2020
- Project cost: \$2.4M



Cultural Resources Award

- 2019 American Cultural Resources Association (ACRA) Industry Award

