

Parks Update

March 1, 2021



Ryan Baker
Parks Manager
Kyle Endelman
Parks Superintendent

Today's update

Major maintenance - 2020 completed projects

Major maintenance - 2021 new projects

Other park updates and opening status

No Board action requested today

Park opening status

- Playground at Walla Walla Point Park open
- Shelters in March
- Ballfields in April
- Beebe Bridge Campground in April
- Walla Walla Point Park being used for staging



Parks Major Maintenance Planning

- About 3 million visitors a year
- O&M & Capital project spending
 - Average approx. \$8M per year (15 parks, 2020-2024)
 - Lake Chelan 10-15 % (average 12%)
 - Rocky Reach 35-40% (average 39%)
 - Rock Island 45-50% (average 49%)
- Park assets are tracked, monitored and inspected
- Boat launches, docks, moorage and erosion control can be largest park project expenditures



Dock & Launch Cost Trend

- Costs for dock and launch projects will taper off after 2020, following a 10-year trend of replacements due to age and condition
- New life expectancy for docks and launches is 50 years

Docks and Launch Costs 2014-2024

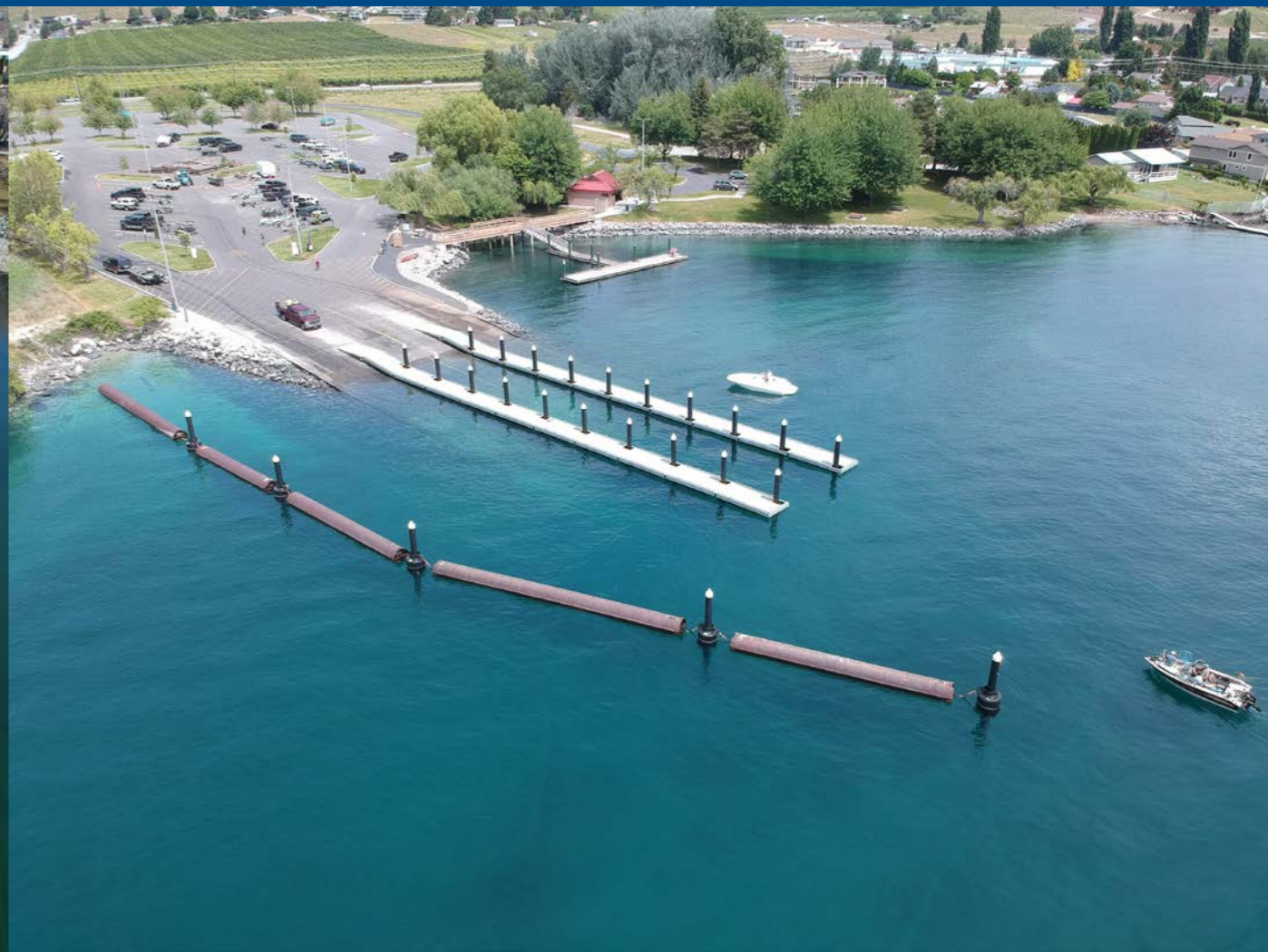


2020 Completed Projects Old Mill Boat Launch and Boom

Before



After



2020 Completed Projects Moorage Docks

Before



After



2020 Completed Projects Confluence Erosion Project

Before



After



2020 Completed Projects

Technology at Beebe Bridge Park

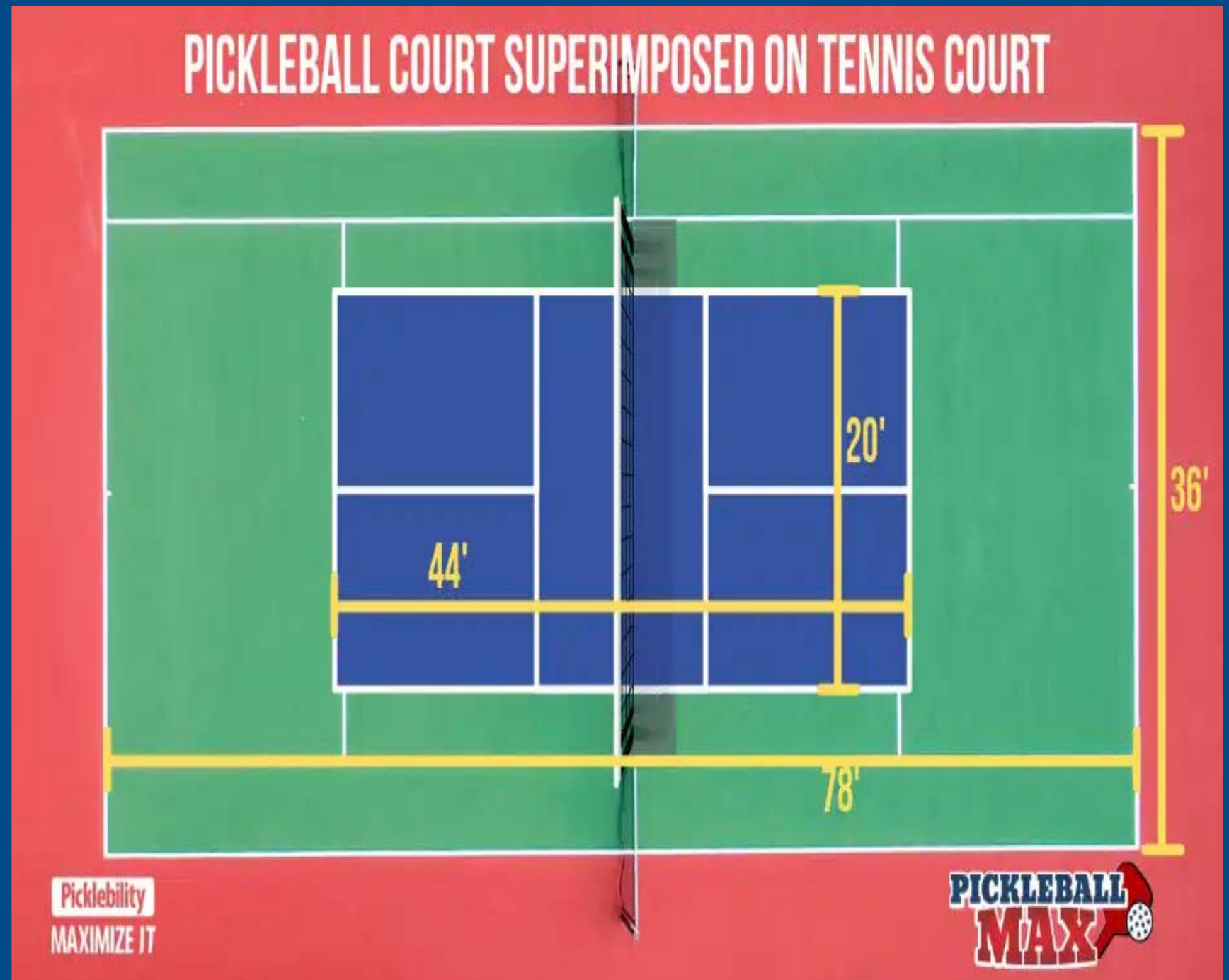
- Fiber service
- Security cameras
- Irrigation pilot project
- Potential future WiFi buildout



2021 Planned Projects

Tennis Court + Pickleball

Walla Walla Park 2021
Daroga State Park 2021



2021 Planned Projects

Kirby Billingsley Erosion Project

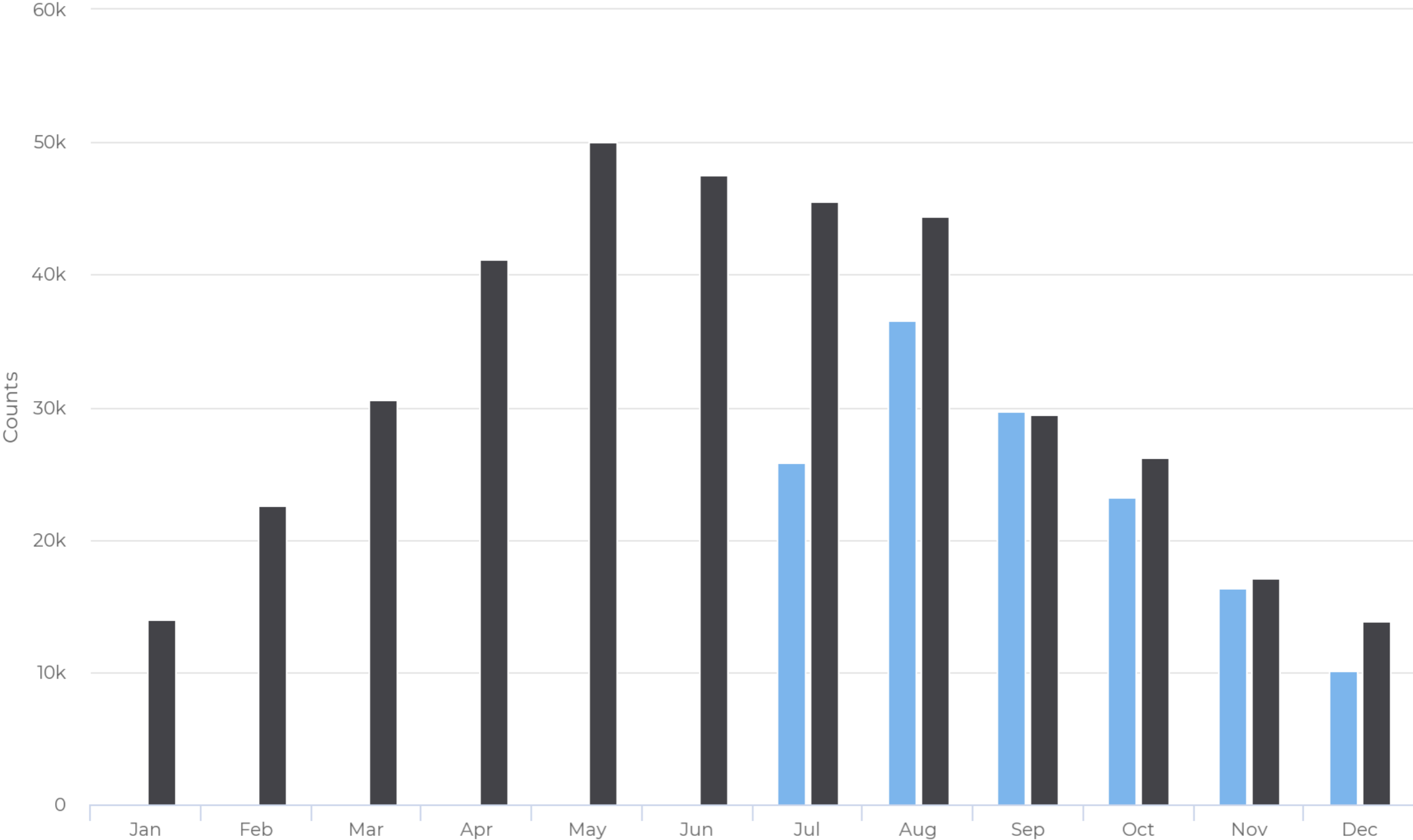


Trail Counter

Comparison

Park Counter

● 2019
● 2020





Park Rule Updates

Drones

Electric motorcycles

New lost and found guidelines

Metal detecting

Time limits on play courts

Camping

[**Link to Park Rules---https://www.chelanpud.org/parks-and-recreation/our-parks/guidelines-applications](https://www.chelanpud.org/parks-and-recreation/our-parks/guidelines-applications)

Summary

- Park staff successfully managed a large visitor increase in 2020 during Covid-19
- On track with O&M and capital project spending for dock, boat launch and erosion projects
- Reservation system at Beebe Bridge Park (to be implemented this year) will improve customer experience, safety, and reduce staff time managing problems
- 2021 is trending towards another very busy year
- Questions?