

Mission Substation Future Expansion Opportunity

April 21, 2025

No Action Requested Today

Agenda

- Seeking support to purchase available property
- Present opportunity today, no action
- Purchase sale agreement in place
- Resolution to be presented for consideration on May 5th

Present Opportunity

- Willing seller
- Supports District's 50-year vision
- Opportunity to purchase the property now
- Property is unlikely to be available when needed in the future
- Due diligence has been completed
- Additional work to remove the mobile homes



CHELAN COUNTY
POWER

www.chelanpud.org

Mission Substation

- Located in Cashmere on Evergreen and Pioneer
- Station originally built in 1978
- Station peak loading in winter of '24/25 was 79%
- Mobile access does not meet expectations
- Existing yard not large enough to double bank



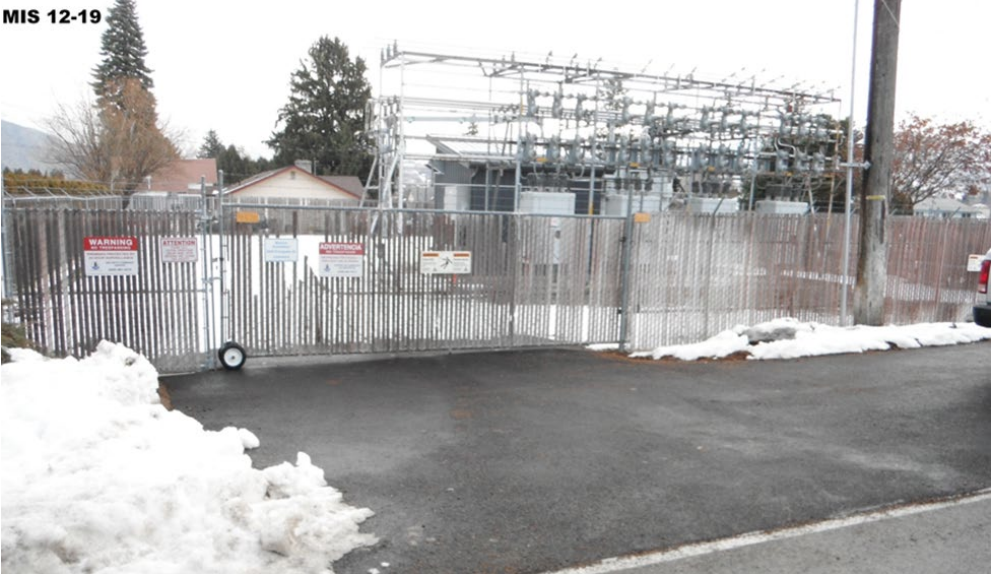
CHELAN COUNTY
POWER

www.chelanpud.org

Mobile Attempt



MIS 12-19



MIS 1-2020



Potential Future Commitments

- Site preparation and clearing \$100k-\$150k
- Transmission is existing
- Double bank station ~\$8 million - \$10 million



CHELAN COUNTY
POWER

www.chelanpud.org

Next Steps & Questions

Return to the board at the next meeting with a resolution for consideration.

Questions?