

## **A PROPOSED WATERFRONT PARK FOR**

# **MALAGA**

PLAY | ADVENTURE | NATURE

**Joint Meeting – November 7<sup>th</sup>, 2022**

**Presented by: Kevin Overbay, Mike Kaputa, and  
Lisa Dowling**

# Why We're Here

- Chelan PUD and Chelan County entered into 'Early Action Agreement'
- *To pursue funding via the FERC relicensing process as a 'Early Action Measure'*
- Partnership with Malaga-Colockum Community Council - engage community to develop conceptual design for a future waterfront park
- Site Suitability Study
- Community Engagement
- Development of 30% Park Design

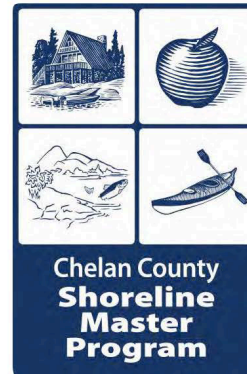


# Chelan County Approved Plans:



2017-2037

CHELAN COUNTY COMPREHENSIVE PLAN



Chelan County Board of County Commissioners approved per Resolution 2021-076 on June 8, 2021.

WA Dept of Ecology approval effective September 30, 2021

June 2021

Chelan County

Page I

## Malaga Vision Plan



As Recommended By The  
Malaga Community Council  
August, 2006



# Project Location

**ALEA Parcel**

222128110050

222127230100

222127230050

222128110026

222127230150

222127240050

222127230150

**WWRP – Local Park Parcels**

## Project Scope

### Acreage

- WWRP-LP: 30 acres
- ALEA: 8.5

### Shoreline

- WWRP-LP: 0.8 miles
- ALEA: 0.25 miles

\*Washington Wildlife Recreation Program – Local Park (WWRP-LP) and Aquatic Lands Enhancement Account (ALEA) are Recreation and Conservation Office (RCO) grant types

## MALAGA PARK PROJECT LOCATIONS

-  Bickford Property
-  Malloy Property
-  Smith Property
-  Chelan Parcels
-  County Boundary
-  Columbia River
-  State Route
-  Roads
-  Railroad
-  Malaga





# Draft 30% Park Design

\*Washington Wildlife Recreation Program – Local Park (WWRP-LP) and Aquatic Lands Enhancement Account (ALEA) are Recreation and Conservation Office (RCO) grant types

## Project Scope



### Acreage

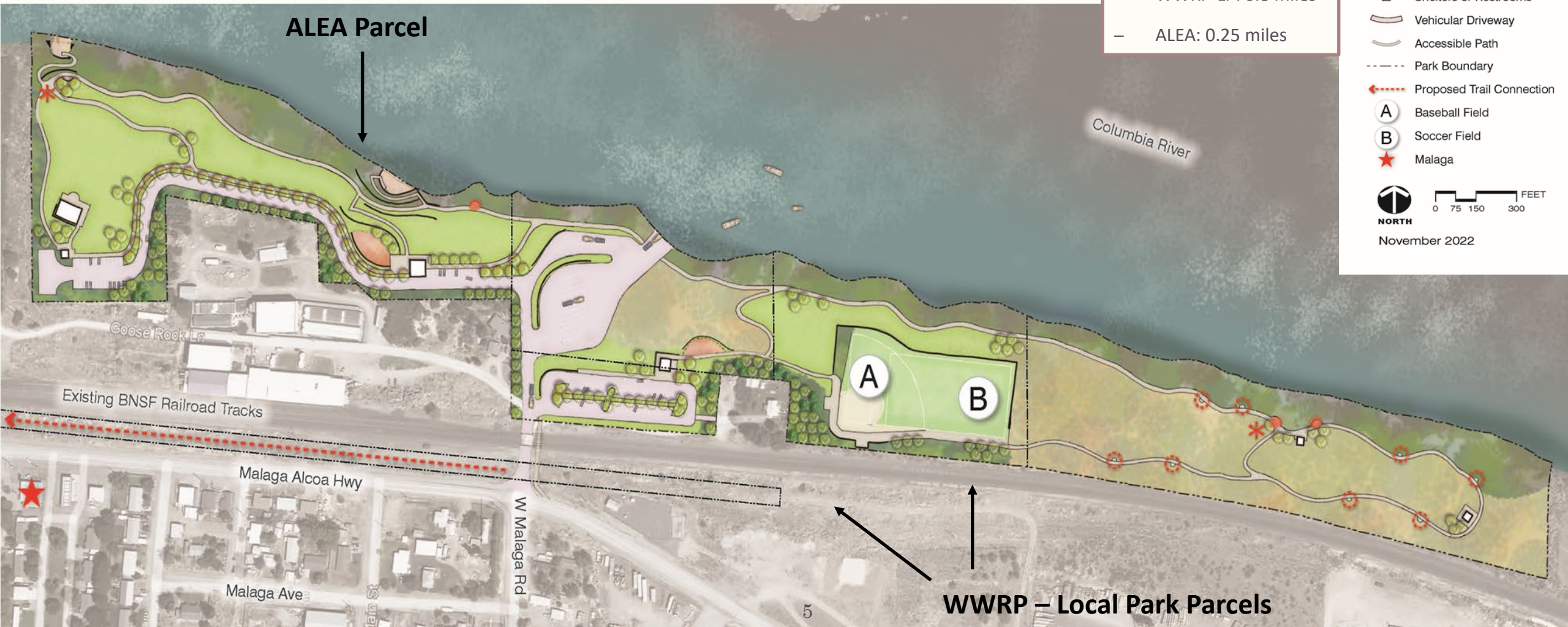
- WWRP-LP: 30 acres
- ALEA: 8.5 acres

### Shoreline

- WWRP-LP: 0.8 miles
- ALEA: 0.25 miles

## LEGEND

- Lawn Area
  - Natural Shrub Steppe
  - Riparian Buffer
  - Playground
  - Interpretive Signage/Art
  - Outdoor Fitness Station
  - Scenic Vista with Benches
  - Swimming/Nonmotorized Watercraft Access
  - Shelters or Restrooms
  - Vehicular Driveway
  - Accessible Path
  - Park Boundary
  - Proposed Trail Connection
  - A Baseball Field
  - B Soccer Field
  - Malaga
-   
NORTH
-   
0 75 150 300 FEET
- November 2022





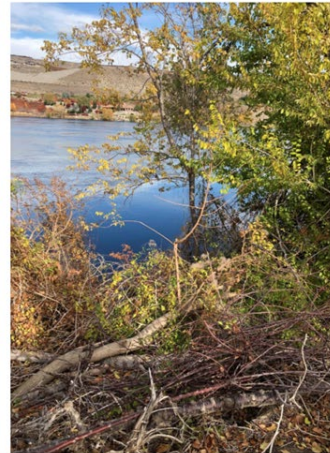
# Opportunity for Expansion





# Community Support

## Community Engagement Activities



A PROPOSED WATERFRONT PARK FOR  
**MALAGA**

### Malaga Virtual Workshop

May 27, 2021



A PROPOSED WATERFRONT PARK FOR  
**MALAGA**

Responde nuestra encuesta. ¿Cuál es su visión de un parque frente al río en Malaga?

En la página web:

<https://www.surveymonkey.com/r/MalagaSpanish>

Obtenga una copia en el Mercado de Malaga al  
3821 Malaga Alcoa Hwy



#### Why a waterfront park in Malaga?

Malaga is the center of a growing community of about 4,600 residents along the Columbia River south of Wenatchee. Though Malaga has miles of shorelines it lacks a waterfront park or recreation facilities.

#### Who is working on the plan?

The Malaga-Colockum Community Council, Chelan County, and the Chelan Public Utility District are reaching out to Malaga area residents, property owners, and businesses to find out what kinds of parks and recreation activities you like to do now, and what would like to see at a future waterfront park in Malaga. A consultant team is working on a suitability analysis to identify potential park sites, and to develop concepts, costs, and funding options.

#### Here's how you can participate.

We would love to hear from you.

- Contact the Malaga-Colockum Community Council members: See emails at <https://malagawa.org/council> or call (509) 663-6192
- Visit the project website: [www.co.chelan.wa.us/natural-resources](http://www.co.chelan.wa.us/natural-resources)
- Join our contact list: send email to [Lisa.Dowling@co.chelan.wa.us](mailto:Lisa.Dowling@co.chelan.wa.us)
- Attend (virtual) events. See <http://www.co.chelan.wa.us/natural-resources/pages/proposed-malaga-waterfront-park> for information.

#### Take our survey. What is your vision for a waterfront park in Malaga?

Online:

<https://www.surveymonkey.com/r/MalagaPark>

Get a copy at Malaga Market, 3821 Malaga Alcoa Hwy





# Community Support

## Caucasian priorities (community survey results):

- ✓ Waterfront Access
- ✓ Family Facilities
- ✓ Fields and Courts
- ✓ Trails

## Hispanic/Latino priorities (community survey results):

- ✓ Family activities
- ✓ Fields and Courts
- ✓ Waterfront access



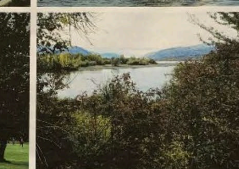
## WHAT DO YOU WANT IN YOUR PARKS?



A PROPOSED WATERFRONT PARK FOR  
**MALAGA**

## WHAT DO YOU WANT IN YOUR PARKS?

### FIELDS + COURTS



### WATERFRONT ACCESS



A PROPOSED WATERFRONT PARK FOR  
**MALAGA**

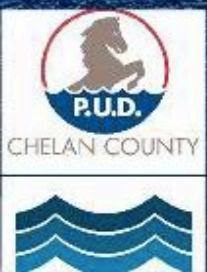
MAY 2021





# Cost Sharing

## *FERC Project No. 943* Rock Island Hydroelectric Project Relicensing **FERC Amendment for Malaga Park**





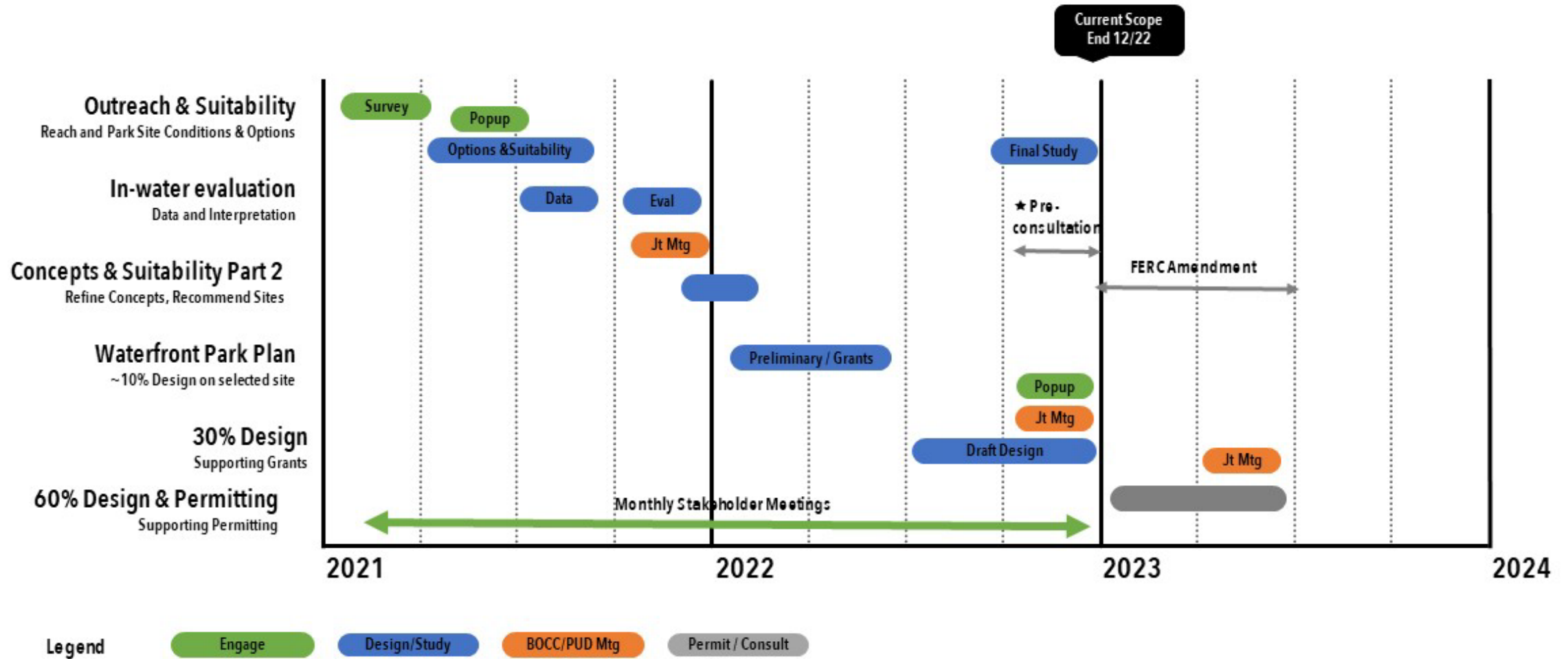
# Cost Sharing

- Site Suitability Study and Development of 30% Design
  - *Chelan County = \$515,000*
  - *Chelan PUD = \$37,500*
- Chelan County ~ Local Appropriations
  - *Lodging Tax Fund*
  - *Capital Improvement Fund*
  - *General Fund*





# Project Schedule



# Next Steps



## Chelan County

- Continue Recreation and Conservation Office grant process
- Further exploration of funding
- Begin pre-consultation on permits
- Conduct additional public outreach
- Further design to 60% and permitting

## Chelan PUD

- Develop, consult, and submit FERC Conceptual Amendment
- Engage on further design



Thank you and  
time for questions

**A PROPOSED WATERFRONT PARK FOR**

**MALAGA**

PLAY | ADVENTURE | NATURE

---


<https://www.co.chelan.wa.us/natural-resources/pages/proposed-malaga-waterfront-park>



# Appendix

---

# Public Access

- 
- *Most residents in Malaga live up to 15 miles from a park.*
  - *A Waterfront Park will fulfill the public access goals of:*
    - Creating new opportunities for river recreation and education
    - Creating new public water access
    - Increase public awareness of cultural and natural resources





Shoreline Protection



# Fish Habitat Protection



## Endangered Species Act - Species (Columbia River)

- Spring Chinook, Summer Steelhead, Bull Trout

## Priority Habitat Species - Species (Columbia River)

- Rainbow Trout; Summer Chinook; Sockeye; White Sturgeon; Bull Trout; Kokanee; Coho



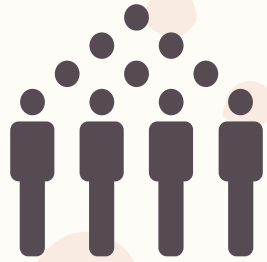
# Wildlife Habitat Protection

## Benefits for Riparian and Shrub-Steppe Species





# Need for Public Access: Malaga Demographics



**Estimated 2022 population: 4927**

4,558 population in 2020 (Census)

+369 estimated 2020-2022, permit-based



**25% of the population is under age 20**

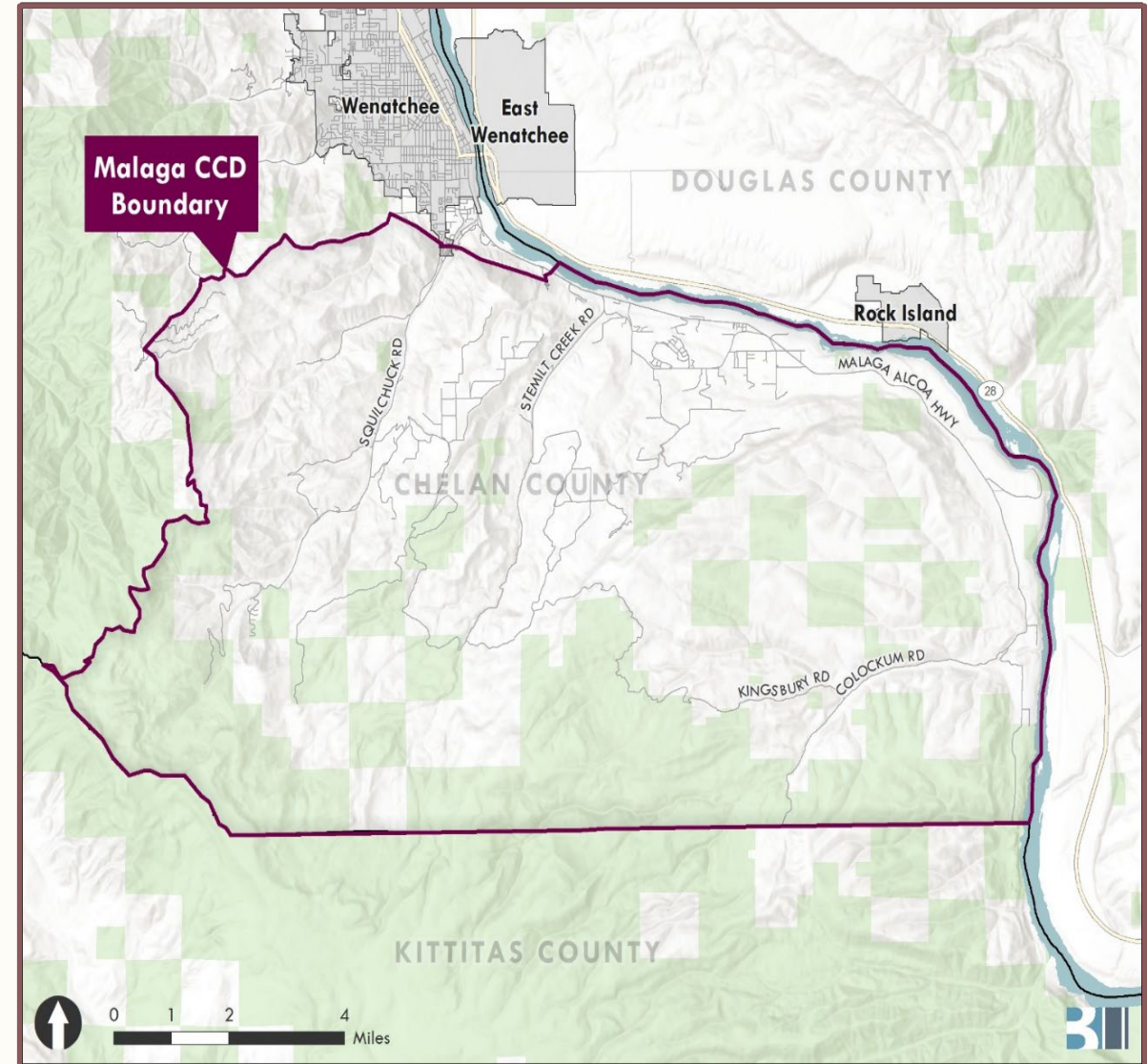
**18% of the population is over age 65**



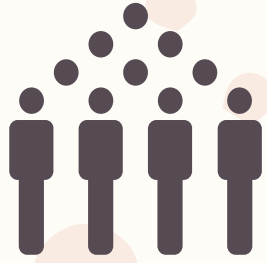
**Most homes are owner occupied (76%)**



**2010-2020 Growth**



# Need for Public Access: Health Disparities



**Estimated 2022 population: 4927**

4,558 population in 2020 (Census)

+369 estimated 2020-2022, permit-based



**25% of the population is under age 20**

**18% of the population is over age 65**



**Most homes are owner occupied (76%)**

## Washington Tracking Network Ranks (1-10 Scale)

8



Limited English Proficiency (LEP)

9



Children Living in Poverty (%)

9



Population 19-64 with No Health Insurance (%)

8



Cancer Deaths

8

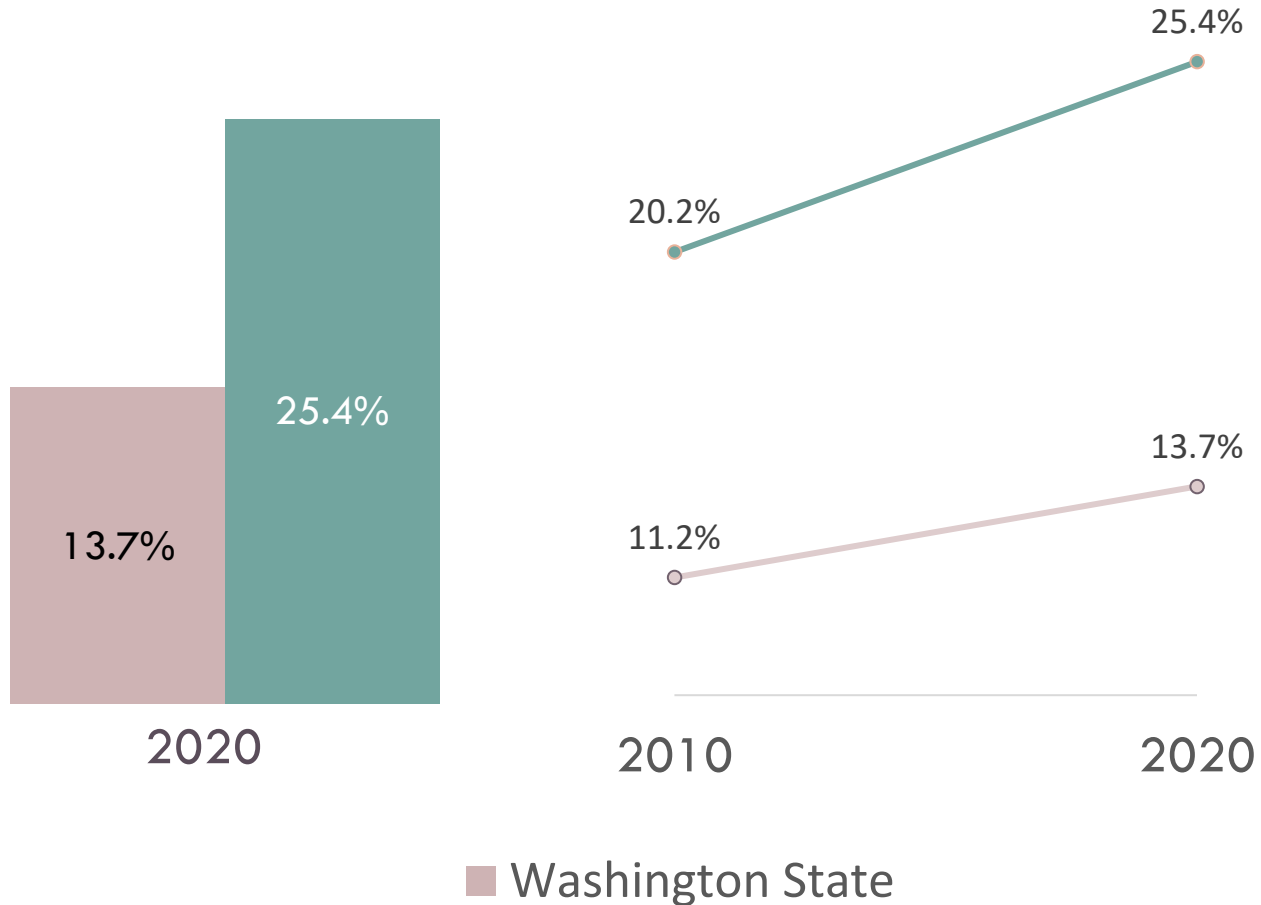


Death from Cardiovascular Disease

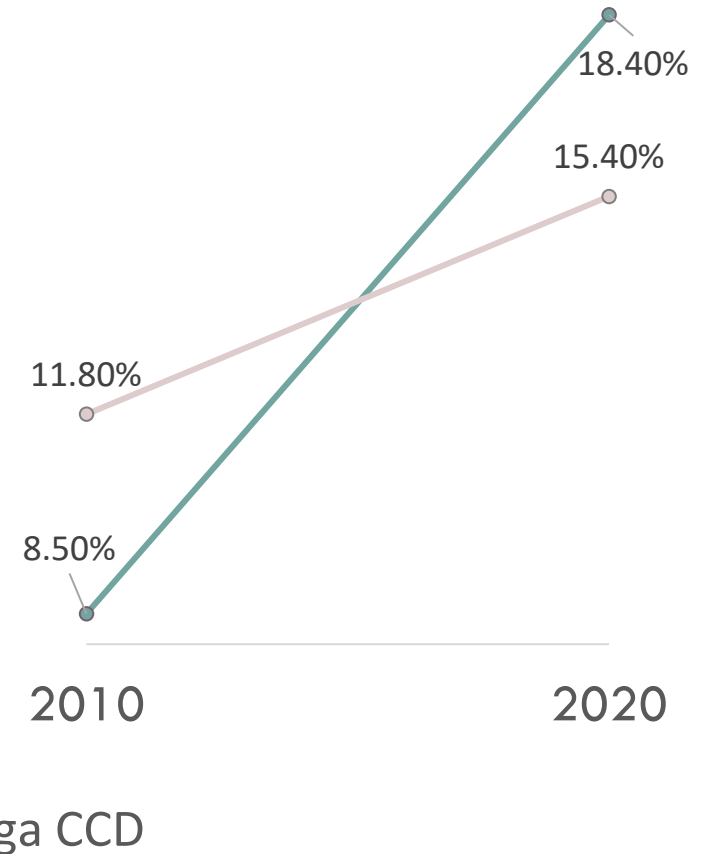


# Malaga Population Trends

## Hispanic or Latino Share of Population

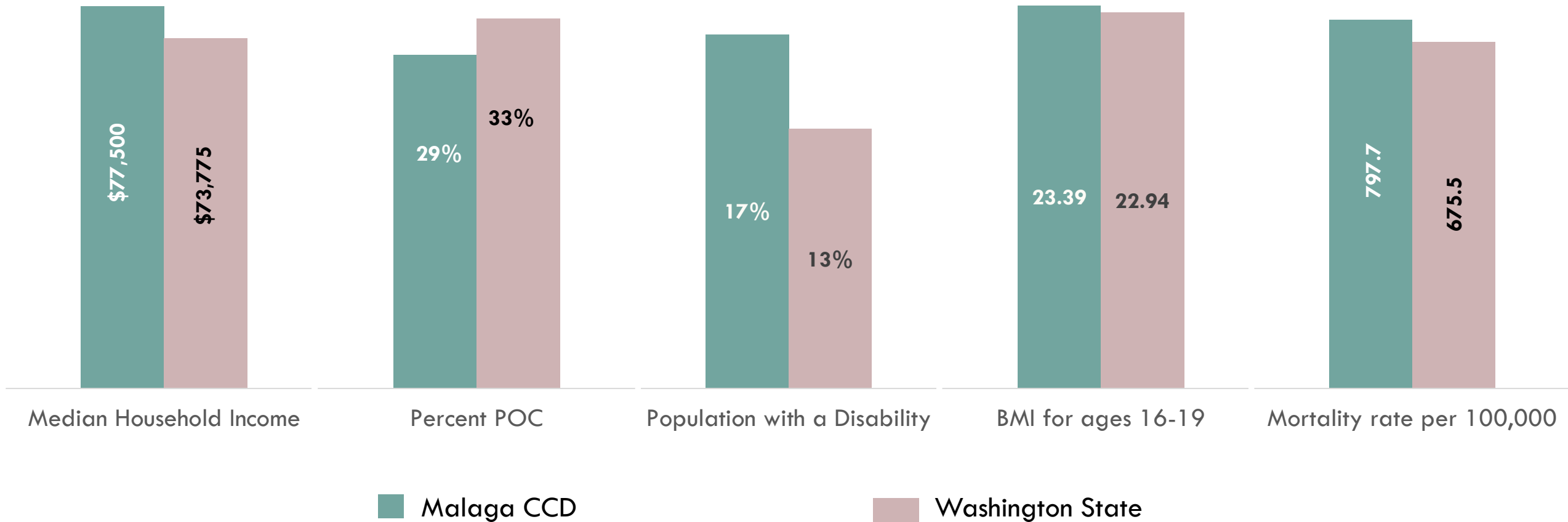


## Population Over 65 Years Old



# Need for Public Access

## Underserved Populations

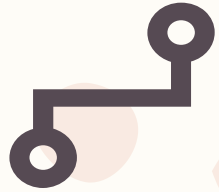


\* People of Color (POC), Body Mass Index (BMI), Census County Division (CCD)

Data sources: American Community Survey 2020 5-year estimates (median income, disability), Census 2020 (POC population), Washington Tracking Network (BMI – 2014, mortality rate – 2016-2020)

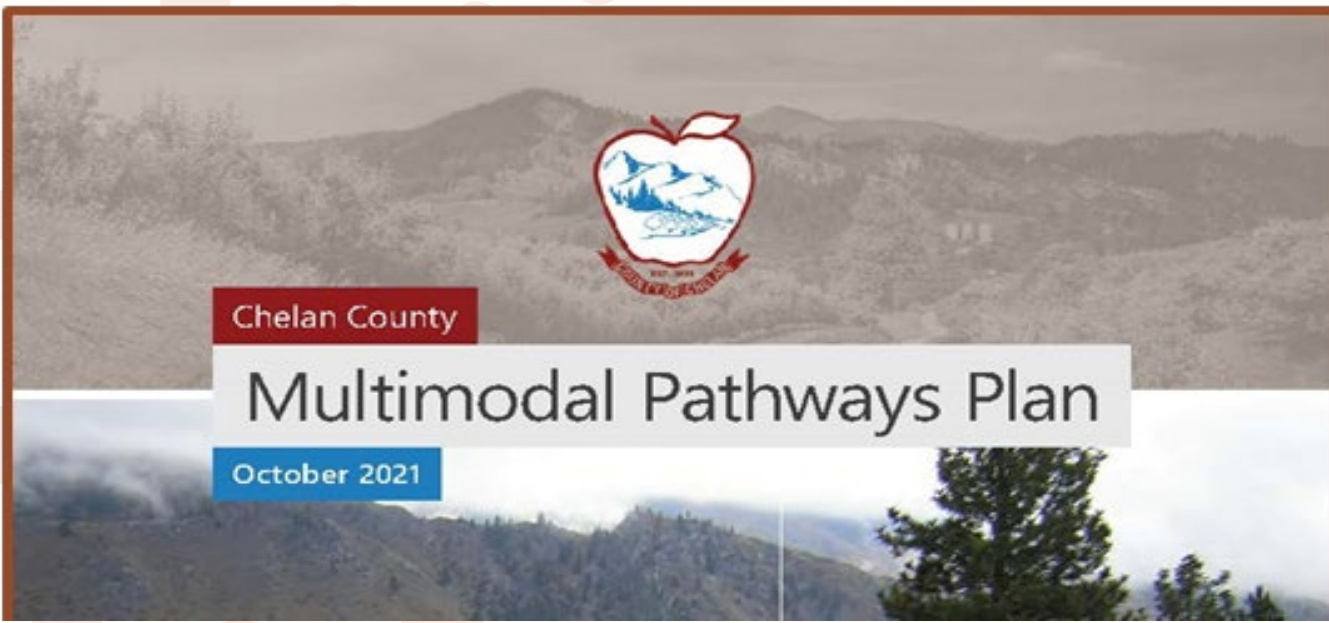


# Game Changer on the Horizon



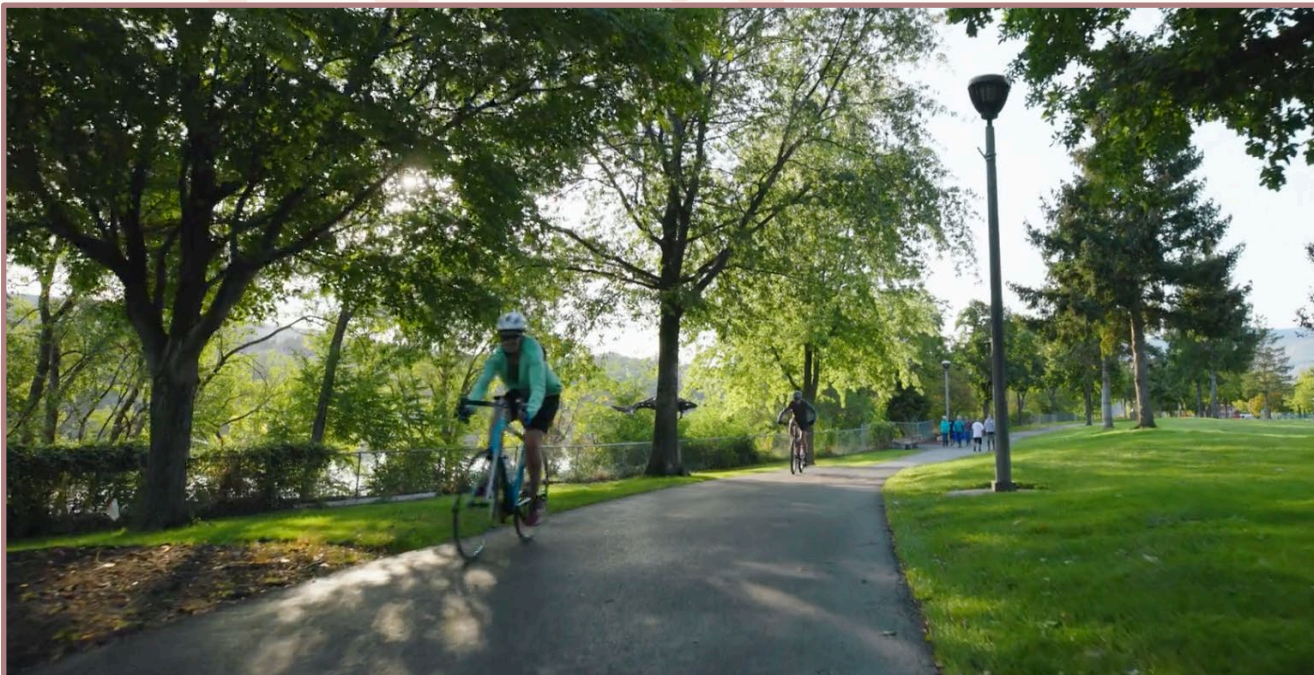
## Future Trail Connection to Wenatchee

- Identified in forthcoming Chelan County Multi-Use Pathways Plan
- Opportunity for regional connections





# Opportunities for Health Improvements:





# Site Suitability for Public Access

## Comparison across shoreline properties near Malaga

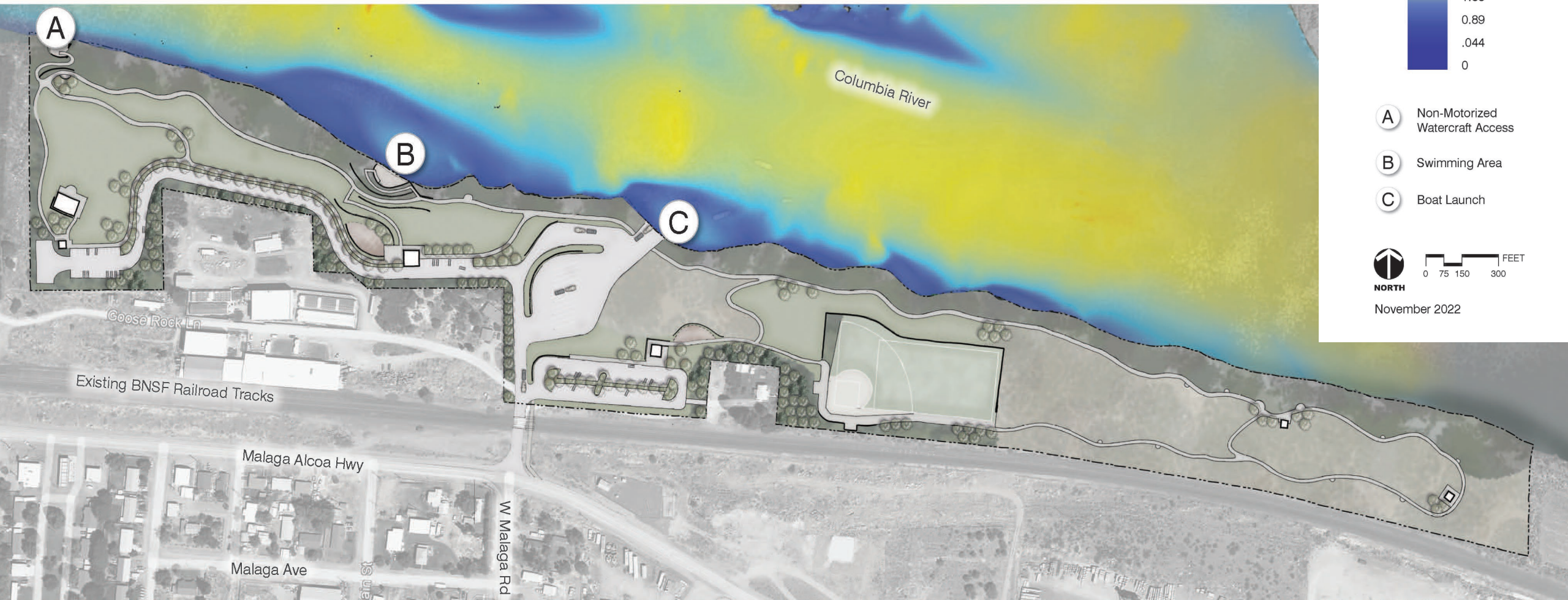
- ☒ Location
- ☒ Access
- ☒ Topography





# Site Suitability for Public Access

## Velocity/Flow Analysis for Watercraft Access and Swimming Area





# Growth and Development

## Malaga shines bright | South Chelan County sees development whirlwind

By Nevonne McDaniels  
Business World staff writer May 21, 2022



Malaga's new housing developments including Villa Real Estates, shown here April 18, offer modern homes in a country setting in the unincorporated area of south Chelan County. In addition to new homes that bring in new families, Malaga also is seeing renewed investment interest in its industrial-zoned properties, above and beyond the decommissioning and eventual

[Buy Now](#)

- “Malaga has become a focal point of growth and development in Chelan County.”
- Shoreline property along the Columbia is the top choice for residential development

# Growth and Development

## Microsoft likely to break ground this year on Malaga project

By Emily Thornton  
World staff writer Apr 27, 2022



**Microsoft is coming to Malaga!**

Increases job opportunities



Increases in developmental pressure



Threat property will be acquired for residential use