

# Wildfire Mitigation Plan 2022

Presenters: Rachel Hansen, Chad Rissman,  
Chad Bowman

June 6, 2022



A scenic view of a road winding through a forest. In the foreground, a tall utility pole stands prominently, with power lines extending across the frame. The road curves to the left, and a white truck is visible in the distance. The trees are lush and green, with some showing early autumn colors. The sky is blue with light clouds. The overall atmosphere is peaceful and natural.

# Why we're here

- Review risk assessments
- Review fire mitigation actions
- 2021 lessons learned
- 2022 recommendations

*Seeking Board feedback*

# Risk study: Distribution

Lake Wenatchee

Navarre Coulee

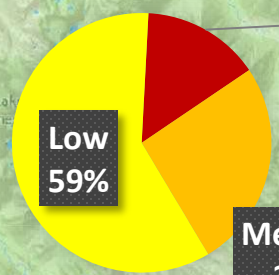
Azwell

Knapps Coulee

Upper Blewett

Colockum

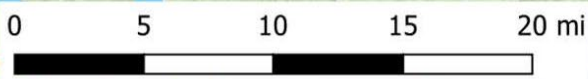
Overhead distribution by risk level



High  
15%

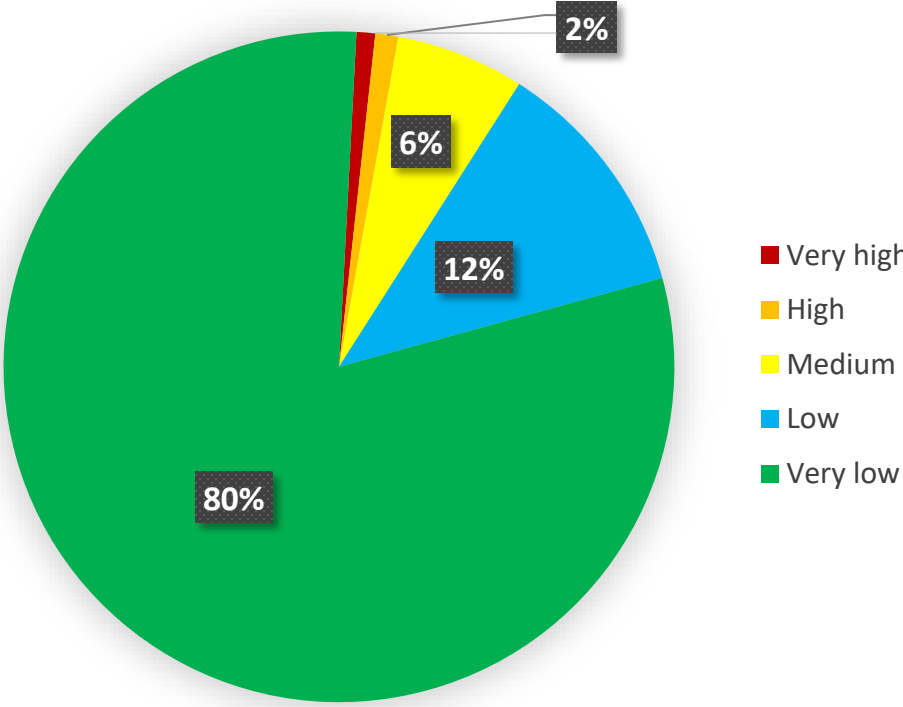
Medium  
26%

Low  
59%



# Risk study: Transmission

Transmission lines by risk level

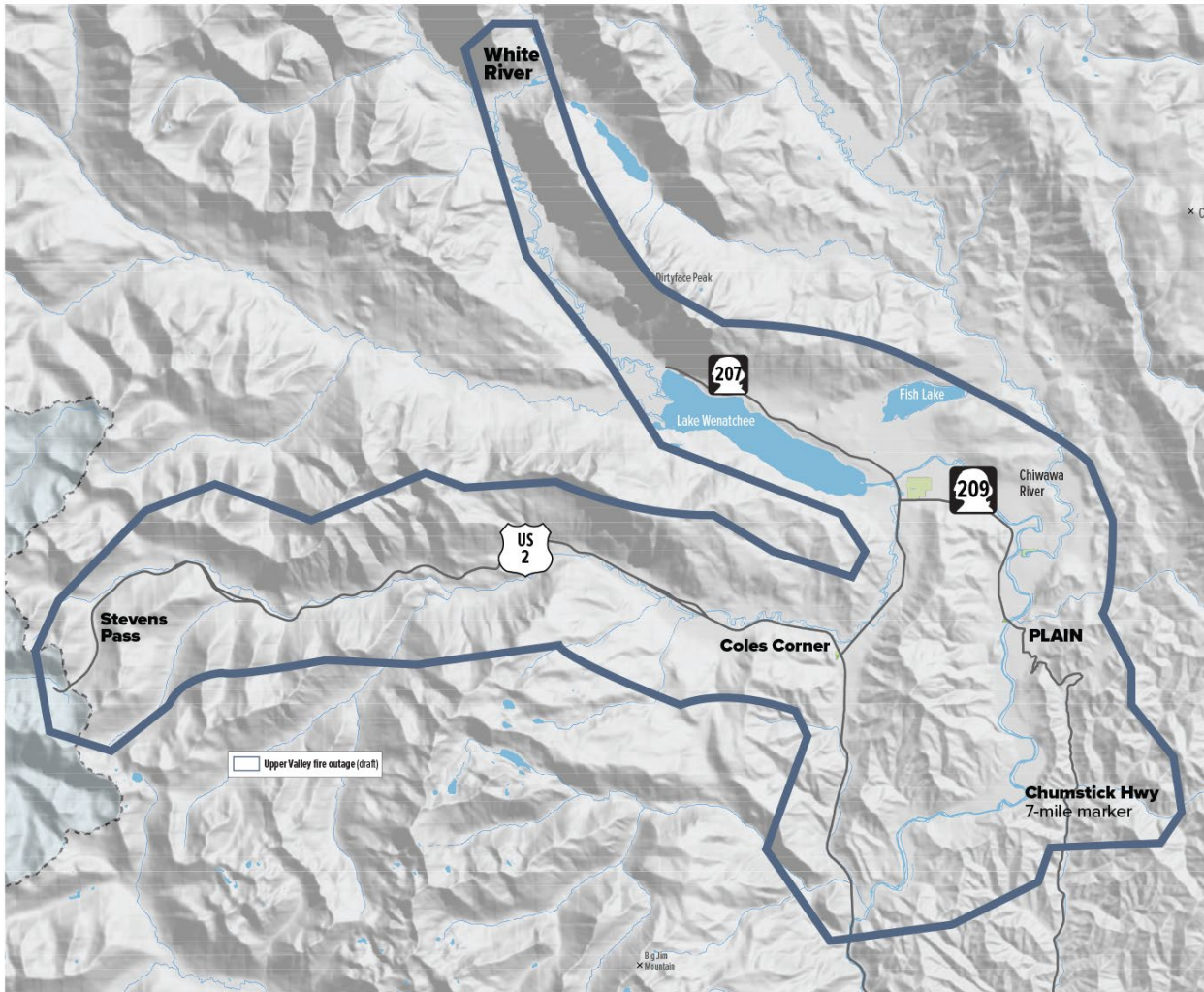




# Fire mitigation plan in action

- Vegetation management: More frequent inspections, pruning
- Operational changes during fire season
- Fire-hardening: Steel structures, fire-retardant paint
- Undergrounding where feasible
- Coordination with other agencies
- Fire safety outage management

# 2021 FSOM area



## Management decision points:

- Wind gusts: 40 MPH
- Flame length potential: 7 ft.
- Other factors/situational awareness

# Lessons learned from 2021

## Lake Wenatchee-Plain

Year (June-Sept.)	Outages	Customer hours out
2019	29	1,175
2020	24	1,645
<b>2021*</b>	<b>40</b>	<b>14,641</b>

*\*Disabled auto-reclosers*

## June-Sept. 2021

Outage cause	Outages	Customer hours out
Wildlife	15	4080
Equipment repair	14	1740
Vegetation	4	2,151
Unknown/other	7	5,932

*Average outage length: 2.9 hours*

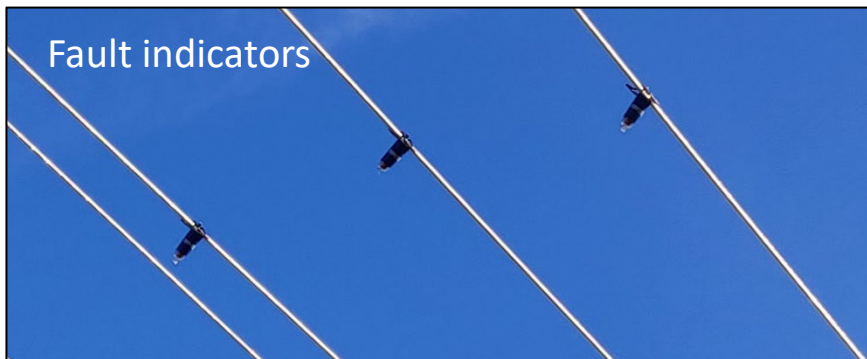
# Lake Wenatchee/Plain recommendations

**Targeted wildlife guarding: \$50k**

**SCADA non-reclose pilot: \$340K**

**Faster fault detection with more indicators: \$5k**

**Targeted setting changes to isolate outages: \$5k**

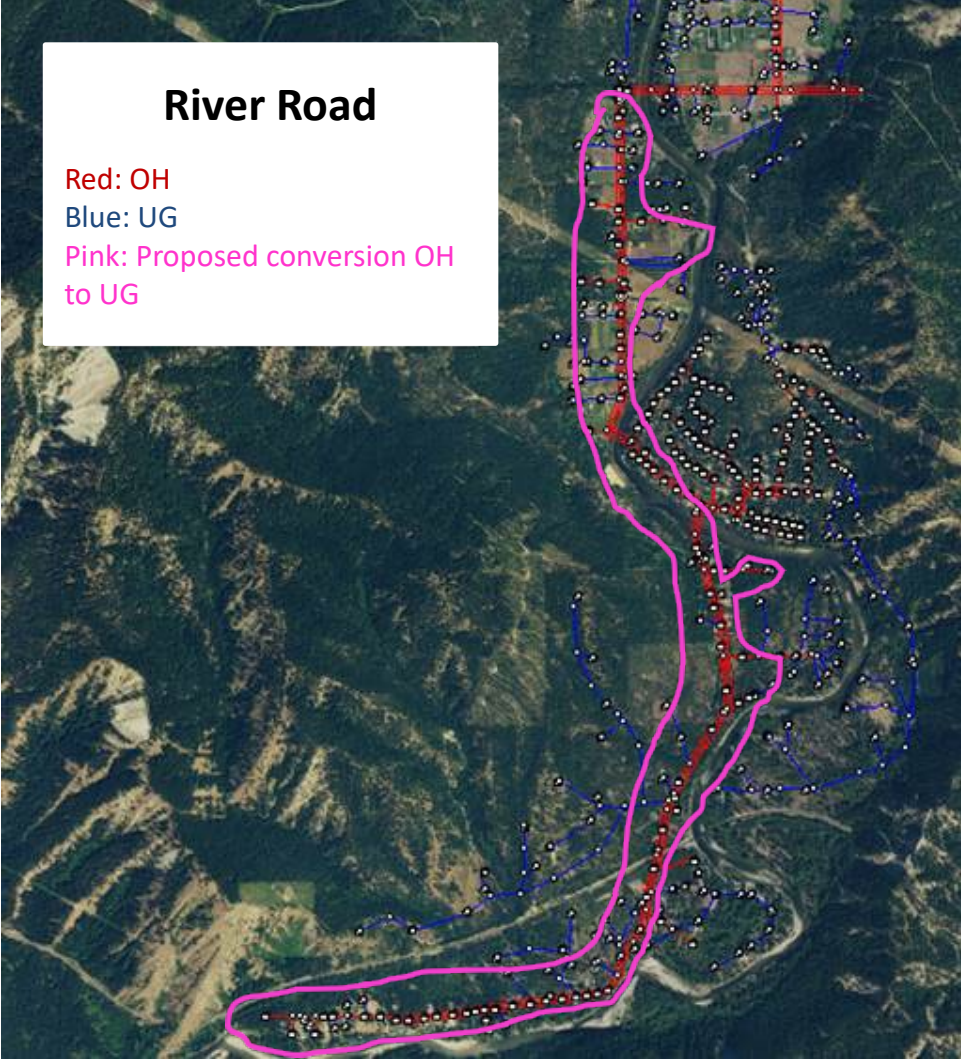




# Lake Wenatchee/Plain recommendations

**Undergrounding River Road:** Design and outreach, \$1M budgeted

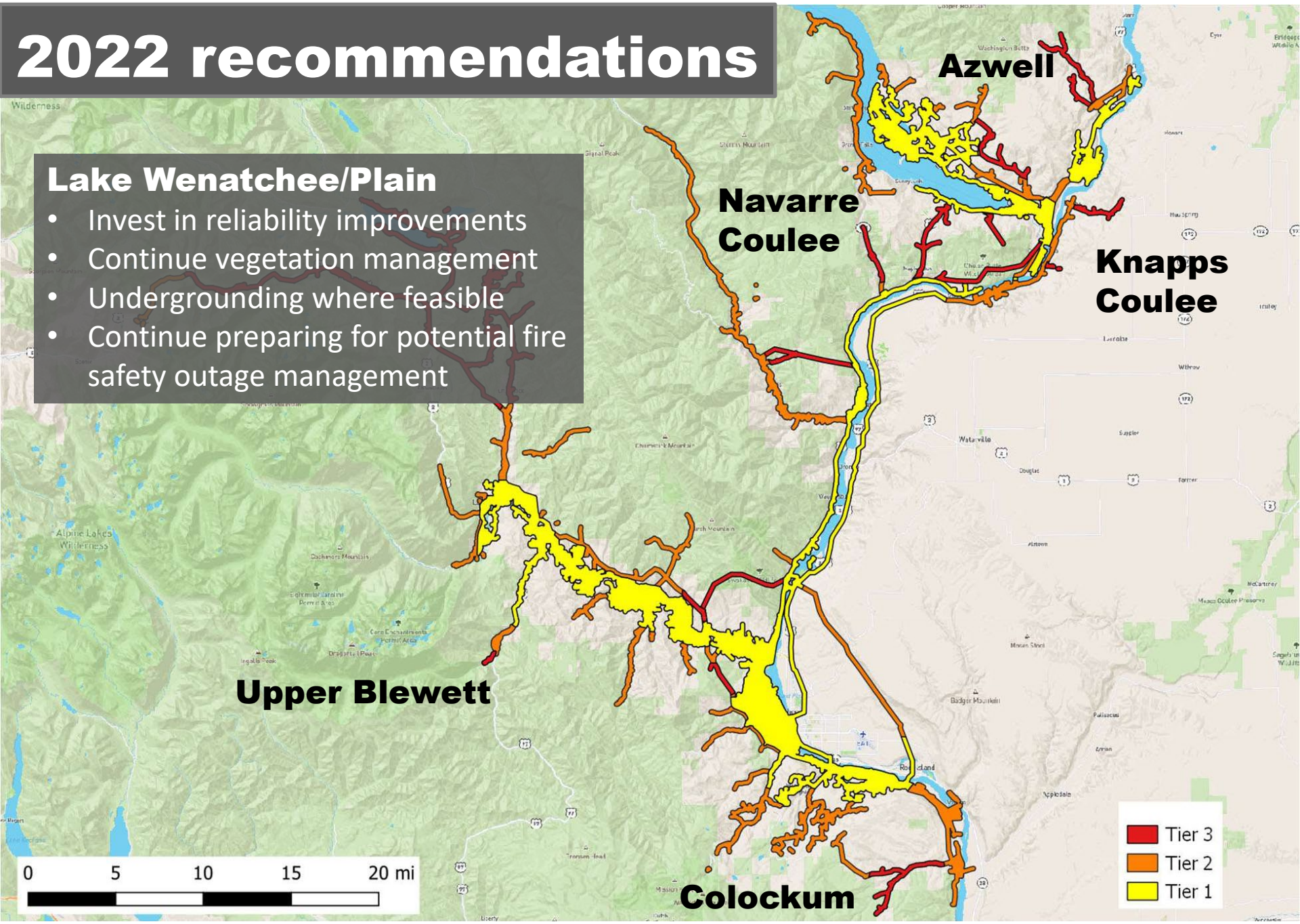
**Feasibility study:** Undergrounding Braeburn Road ~\$1M total project



# 2022 recommendations

## Lake Wenatchee/Plain

- Invest in reliability improvements
- Continue vegetation management
- Undergrounding where feasible
- Continue preparing for potential fire safety outage management



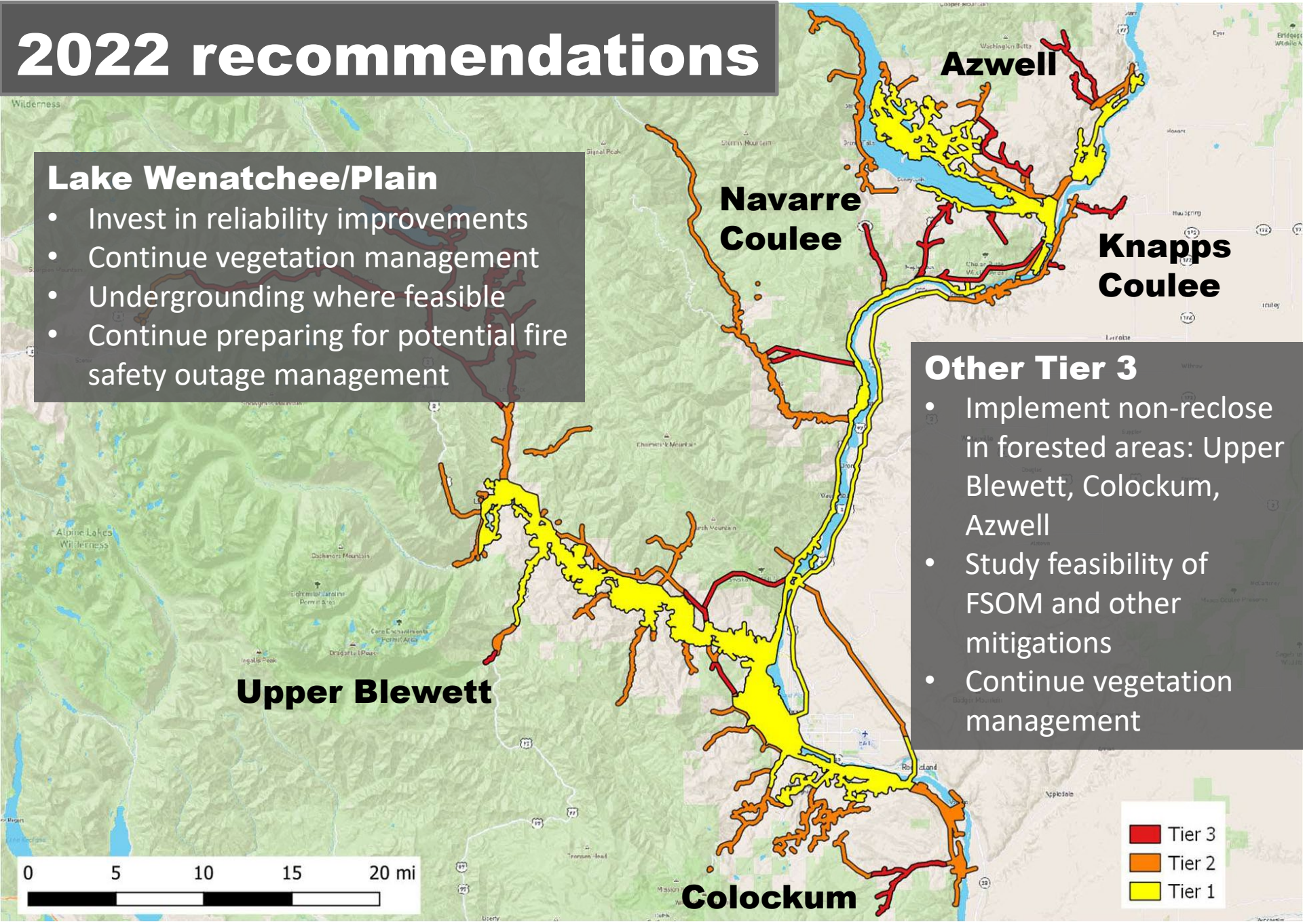
# 2022 recommendations

**Lake Wenatchee/Plain**

- Invest in reliability improvements
- Continue vegetation management
- Undergrounding where feasible
- Continue preparing for potential fire safety outage management

**Other Tier 3**

- Implement non-reclose in forested areas: Upper Blewett, Colockum, Azwell
- Study feasibility of FSOM and other mitigations
- Continue vegetation management



# Next steps: Public outreach

- ✓ Lake Wenatchee Safety Day
- ✓ Chumstick Wildfire Stewardship Coalition meeting
- ✓ Update [chelanpud.org/FSOM](http://chelanpud.org/FSOM), added wildfire mitigation plan page
- Neighborhood meeting where undergrounding (6/11)
- Update meeting with Phase I expert working group
- Mailer to Phase 1 area
- Articles in Lake Wenatchee Info, Leavenworth Echo

