

Chelan PUD Updates

Tri-Commission Meeting

June 29, 2021

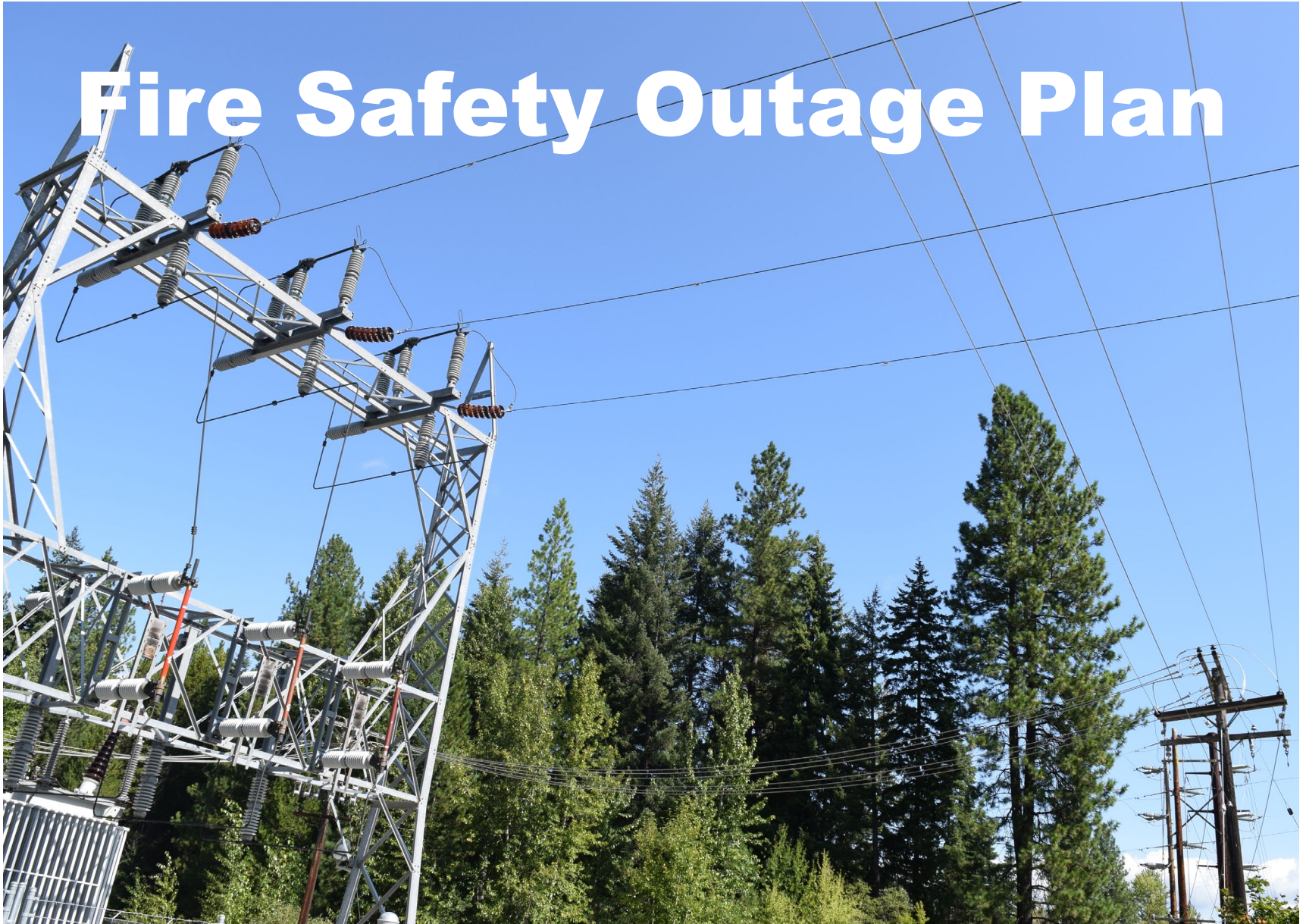


Second Water Source Update

- Eastbank Aquifer projected to reach capacity by 2035
- Regional members have been evaluating second source options since 2014
- Groundwater test wells have not located a sufficient source and emphasis has now been placed on potential use of surface water
- Chelan PUD and CDRPA received \$300K from State capital budget to fund a feasibility study
- Process will take approximately 18 months to complete and focal area is between South Wenatchee and Malaga
- Seeking Federal funding



Fire Safety Outage Plan



Project timeline

1

Initial Plan Draft

- 1.1 Define existing infrastructure and communities at risk
- 1.2 Review emergency operations plan
- 1.3 Compare best practices
- 1.4 Develop initial draft plan
- 1.5 Develop communications plan, send materials to production (website, maps, FAQ, talking points)

October-February

2

Engage Partners

- 2.1 Develop presentation
- 2.2 Identify emergency response and telecom partners
- 2.3 Identify partner agencies that represent vulnerable populations
- 2.4 Conduct outreach sessions
- 2.5 Compile feedback
- 2.6 Update plan
- 2.7 Report to board

March-early April

3

Public Outreach with Partners

- 3.1 Prepare public outreach presentation
- 3.2 Prepare fact sheet, website, email inbox for comments
- 3.3 Conduct outreach session
- 3.4 Continue to develop mitigation strategies for identified community impacts
- 3.5 Compile feedback
- 3.6 Update plan, communications materials

April-May

4

Executive Review

- 4.1 Prepare final plan
- 4.2 Continue to develop mitigation strategies for identified community impacts
- 4.3 Report to board
- 4.4 Revise plan as needed
- 4.5 If approved, conduct tabletop exercises and refine plan annually

June-September

Mitigation Efforts



1. Telecom and radio communications
2. Vulnerable populations
3. Contingency planning for active fire scenarios
4. Neighborhood water supplies
5. All others (economic, logistics, etc.)

Appendix: Fire safety outage timeline

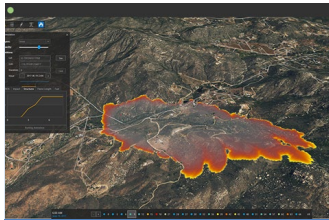
5-7 days ahead



Initial forecast

Stand up Internal ICS
 Monitor weather patterns/thresholds
 Notify emergency response partners and telecoms of developing conditions

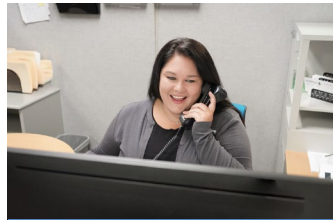
3-4 days ahead



Watch

Briefing with emergency response partners
 Prepare messaging, consider staffing up call center/dispatch

2 days ahead, repeat at 24 hours



Warning

Continued briefings with emergency response partners and telecoms
 Contact Medical Electric Needs Registry
 Calls to key accounts
 Notify all customers of Fire Safety Outage Warning
 • Website
 • Social
 • Readerboard
 • Email
 Media advisory, press conference if necessary

Fire safety outage



Outage

Continued briefings with emergency response partners and telecoms
 Day-of notifications, with estimated outage time if available
 • Website
 • Social
 • Readerboard
 • Email
 Media advisory

Inspection**



Continued briefings with emergency response partners and telecoms
 Notifications:
 • Website
 • Social
 • Readerboard
 • Email
 Media advisory
 ** Inspection may take longer than the weather event itself.

Power restored

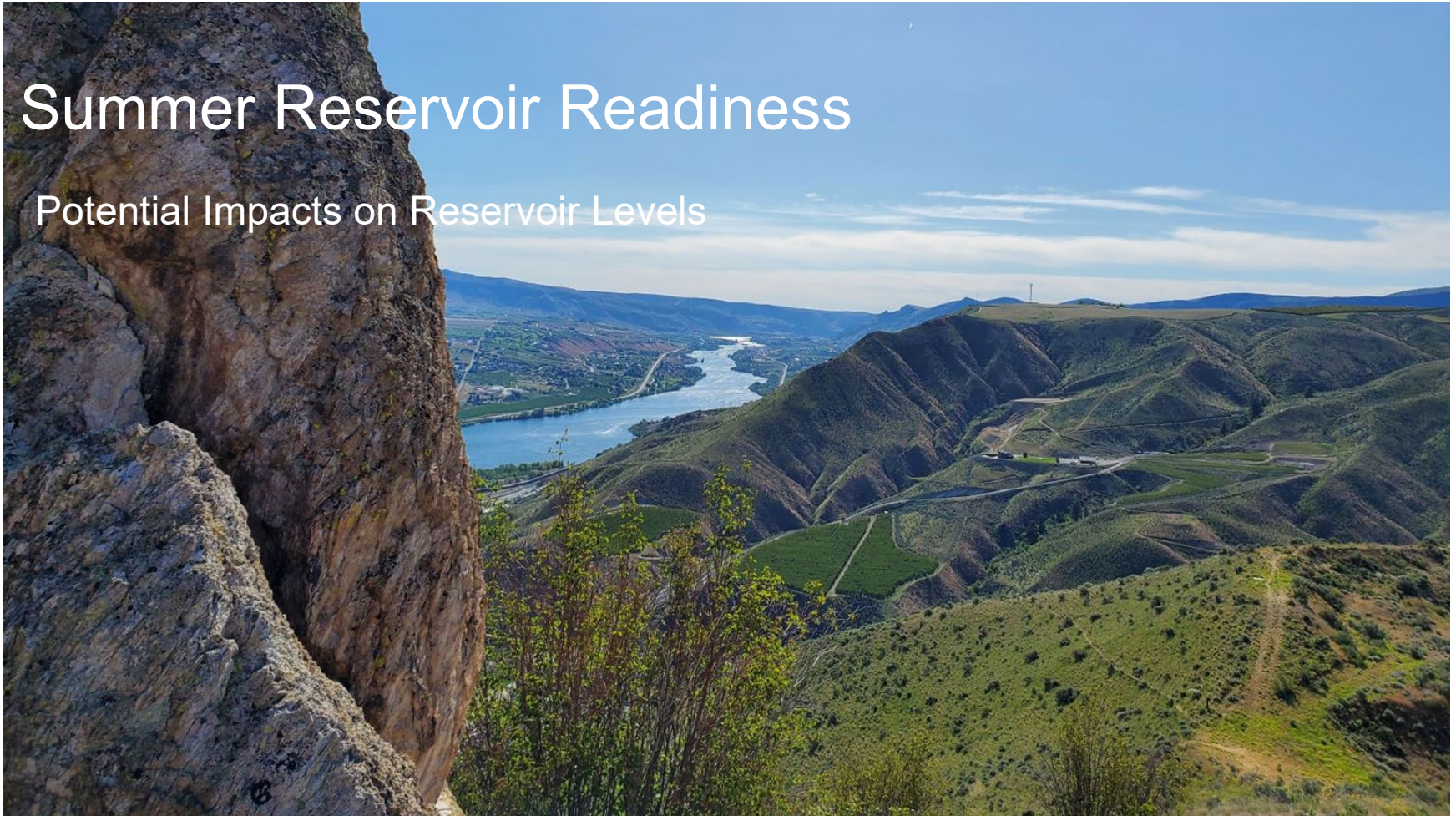


Restore

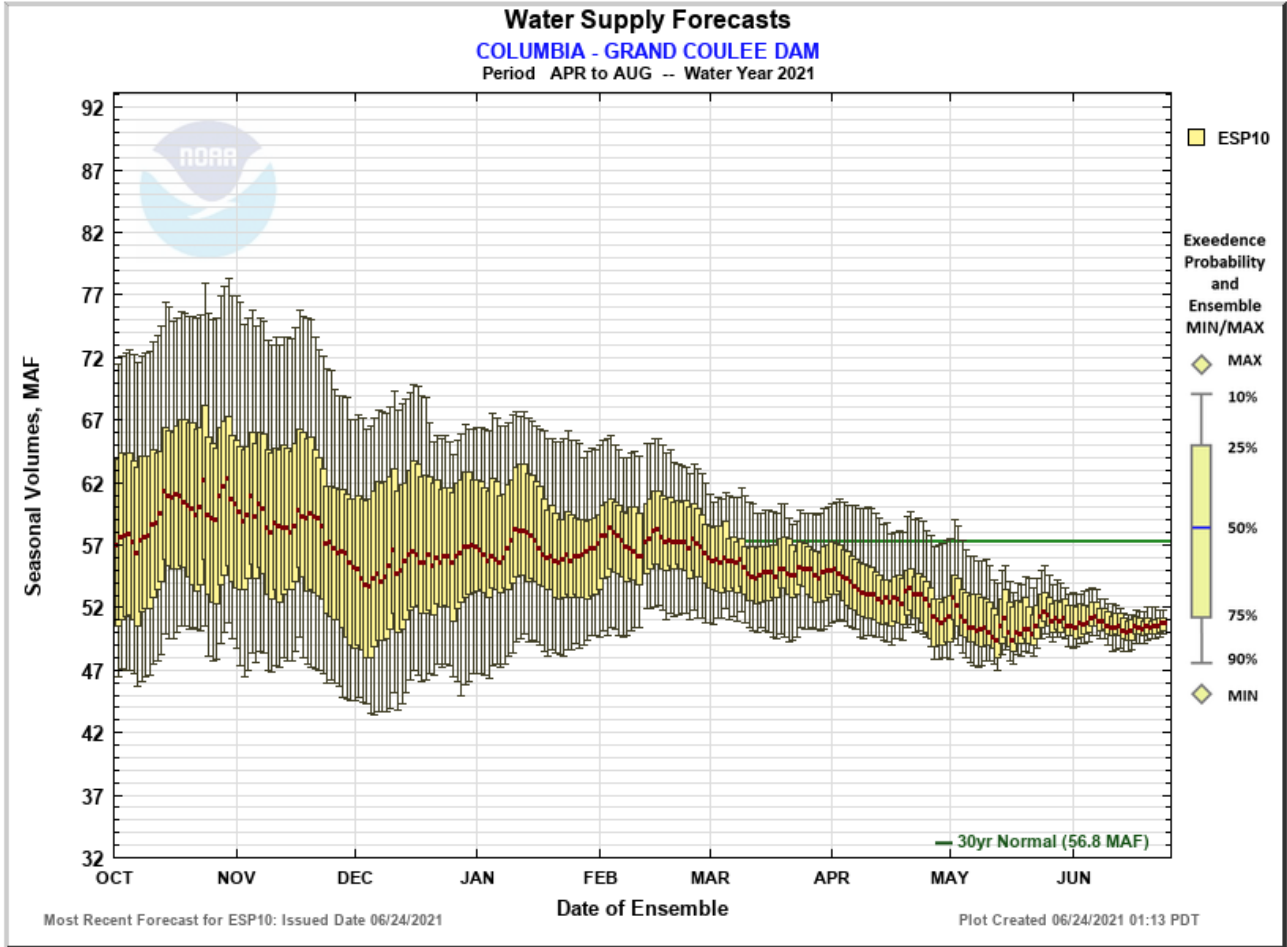
Debrief with emergency response partners and telecoms
 Notifications:
 • Website
 • Social
 • Readerboard
 • Email
 Media advisory
 Debrief with impacted community

Summer Reservoir Readiness

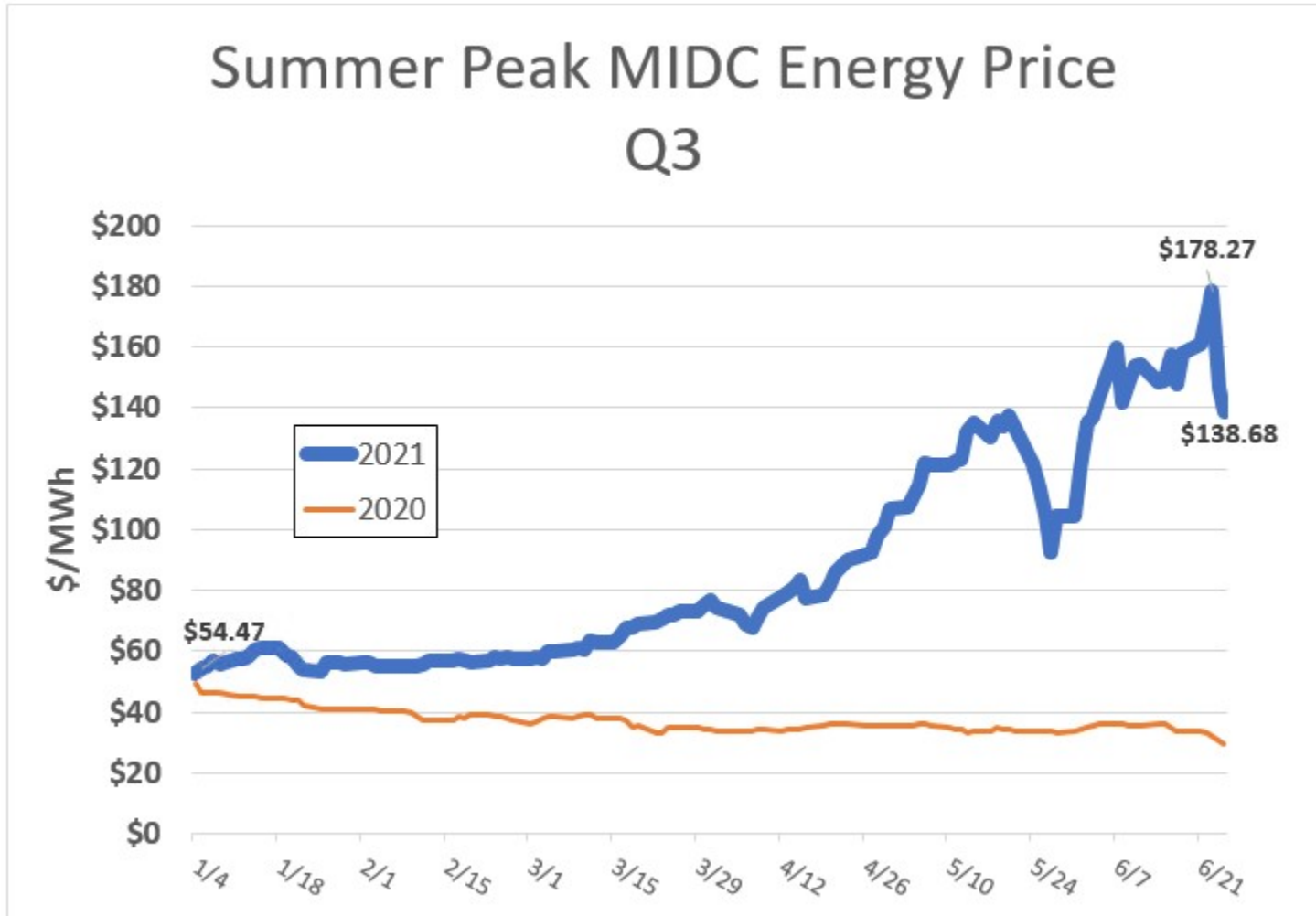
Potential Impacts on Reservoir Levels

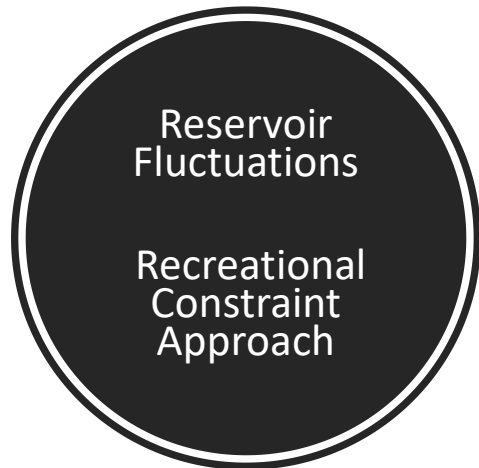


Grand Coulee
89% of
Average



SUMMER SQUEEZE





- Expecting more reservoir fluctuations
- Constraints may be placed on both hydro plants for weekends between July 15- Sept. 15*
 - RR: 704.0 (1 ft higher than FERC license lower limit)
 - RI: 611.0 (2 ft higher than FERC license lower limit)
- Decision on constraints made prior day-ahead trading for Saturday and Sunday
- Decision to implement constraints based on flows, grid conditions, market conditions, hydraulic capability of project, storage likely to be used
- Was not used in 2020

**We will re-evaluate based on recreation, flow levels, and regional energy and capacity needs*

Summary

- Low water supply in most parts of West
- Already seeing scarcity pricing for summer months
- Expecting reservoir fluctuations - monitor operations and associated customer/recreational user feedback
- Communications/Outreach
- Balancing stakeholder needs with Western energy and capacity shortage



Energy Demand and Forecast Quarterly Load Update

Wenatchee Valley home-building boom just keeps on going

Builders, contractors, permit processors busy while first-time home buyers compete with Zoomers

By Nevonne McDaniels
World staff writer Apr 1, 2021

Stay Informed. Subscribe for only \$2.49/week



System growth observations moving into Q2 2021



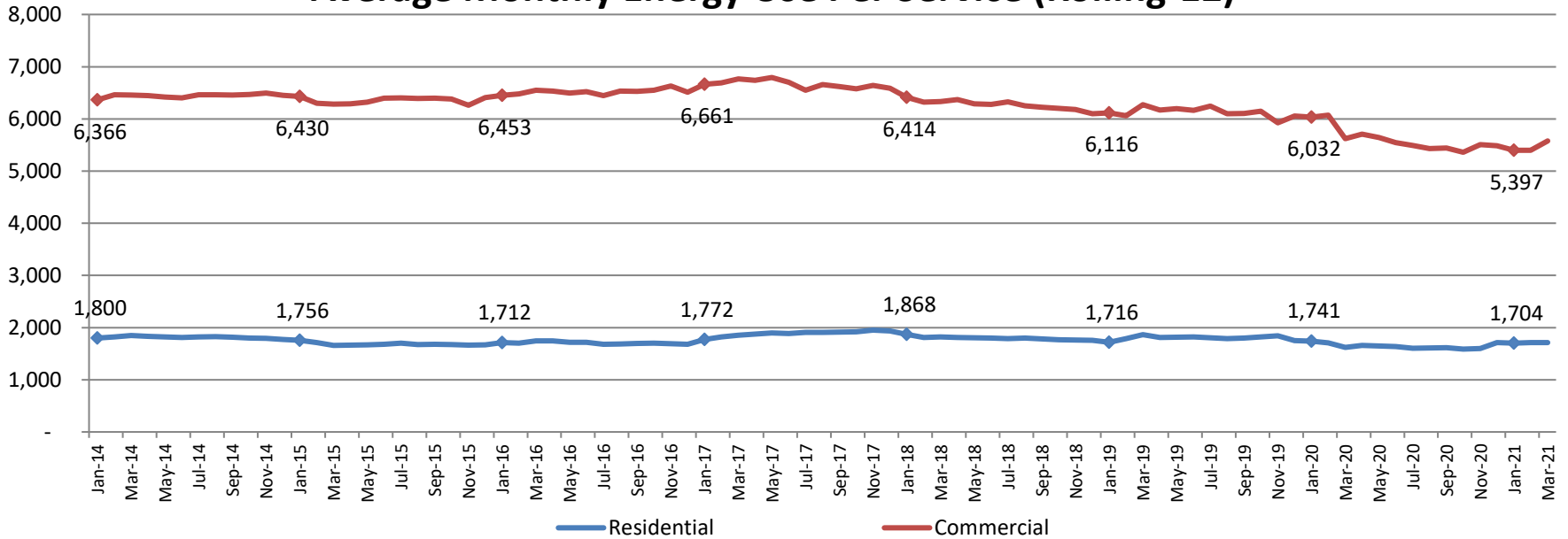
Photo: Triad Development, Wenatchee

- New residential housing remains a primary focus across the county
Single family, multi-family & low barrier / affordable housing
- Moderate new development in commercial including hotels and retail shops
- Schools, restaurants and bars becoming re-occupied
- Pre-Covid norms emerging

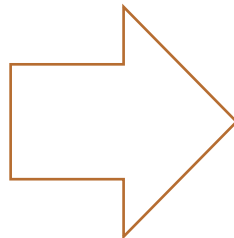
Electrical system energy

Residential and Commercial

Average Monthly Energy Use Per Service (Rolling-12)



Contributors to reduction in use



- WA State energy code
- Energy conservation
- Energy efficiency
- Weather temperatures




10 Year Load Forecast

(Net of Energy Conservation Plans)

Date of Forecast	Base Case	High Case	Low Case
Oct 2020	26 aMW * 1.1 %	130 aMW 4.6 %	-1 aMW - 0 %
Jan 2021	26 aMW * 1.1 %	130 aMW 4.6 %	-1 aMW - 0 %
April 2021 Annual Growth Rate	26 aMW * 1.1 %	130 aMW 4.6 %	-1 aMW - 0 %

Current
Forecast



Questions?

