



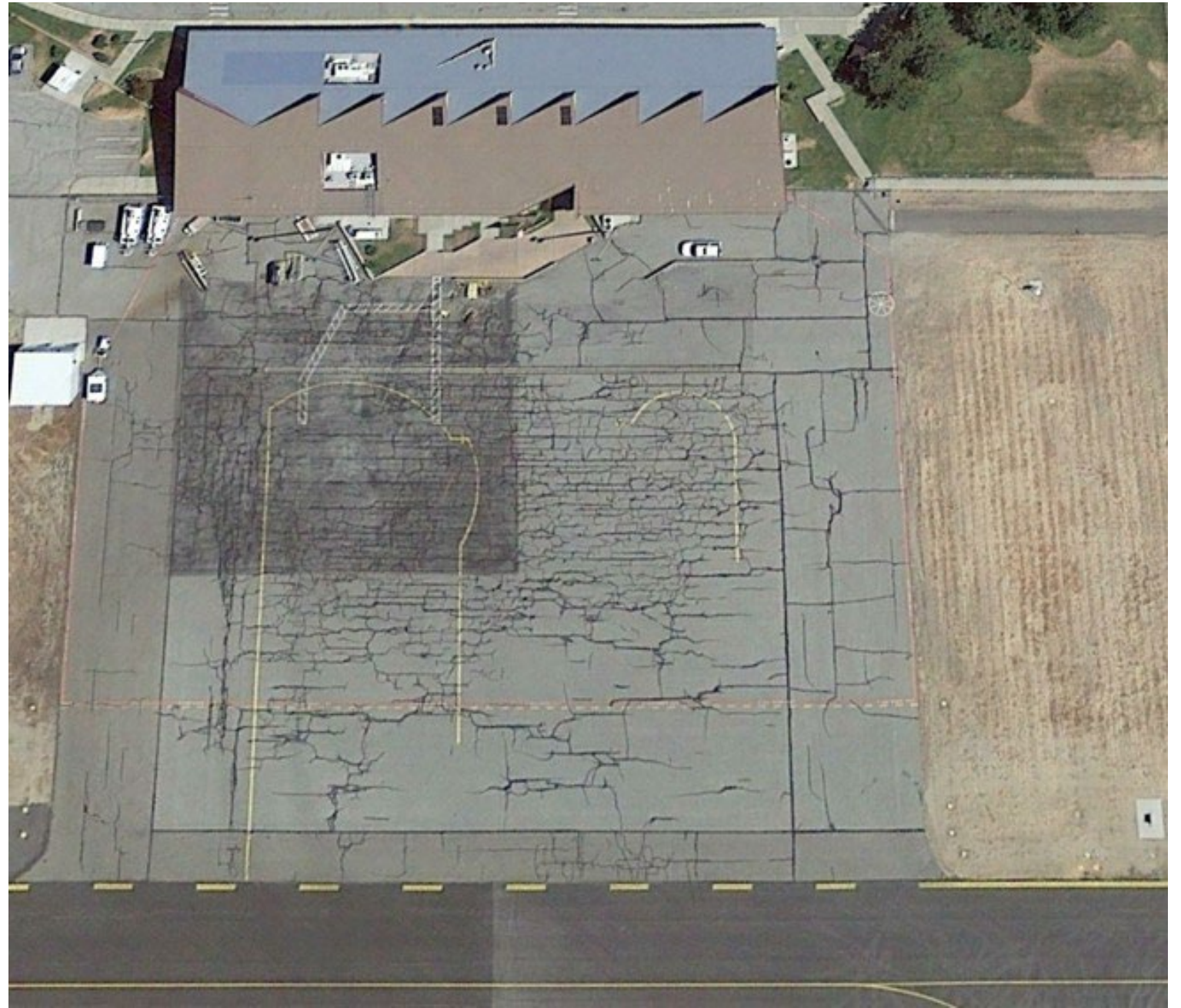
Chelan County Tri-Commission Meeting

September 27, 2022

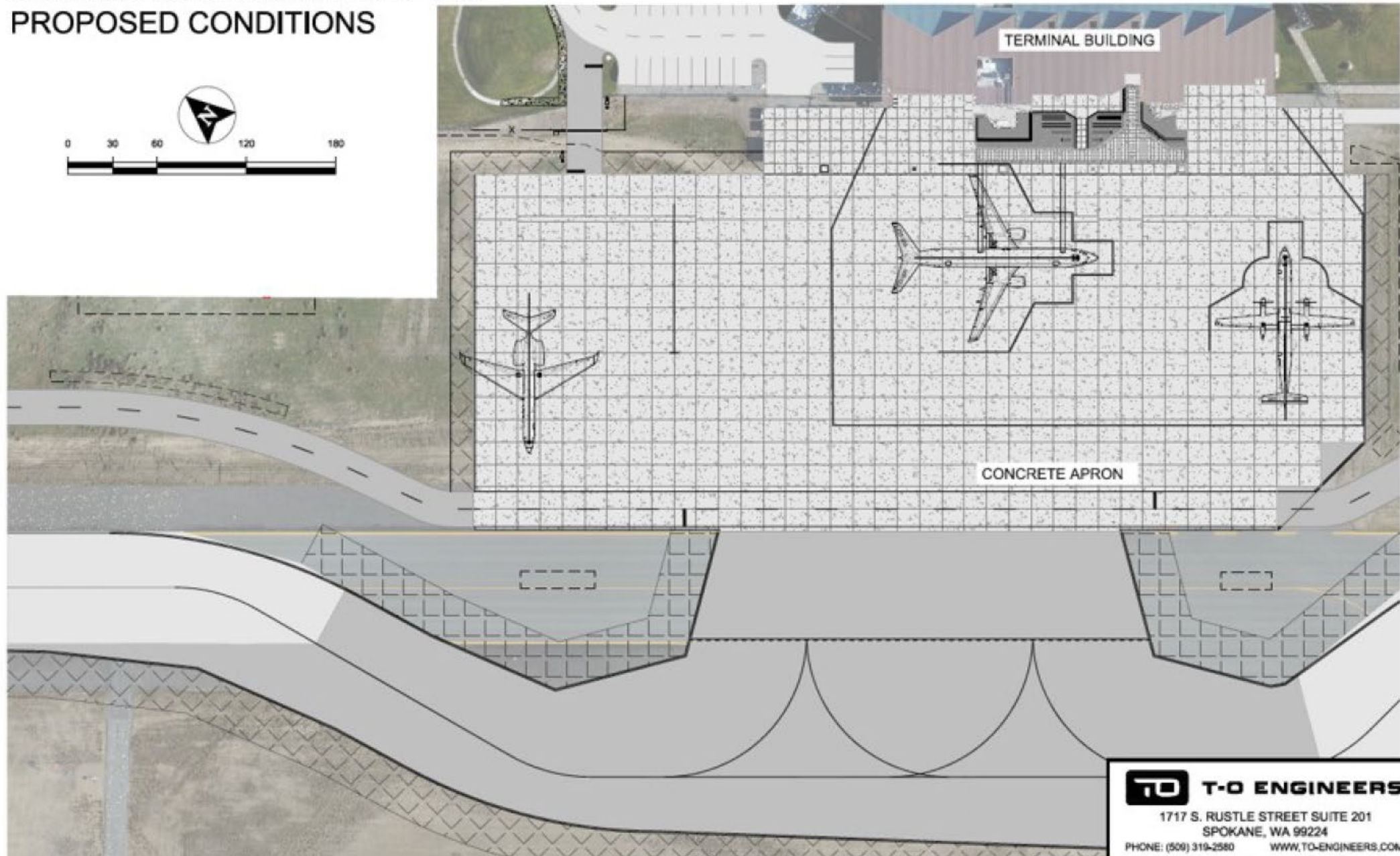
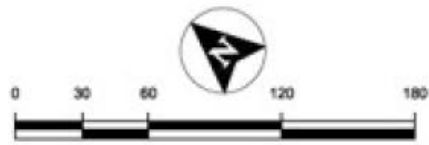


Pangborn Memorial Airport Terminal Apron Ramp

Before Construction



PANGBORN MEMORIAL AIRPORT PROPOSED CONDITIONS











BEFORE CONSTRUCTION



Pangborn Memorial Airport MALSR System

**(Medium Intensity Approach Lighting System
with Runway Alignment Indicator Lights)**

PANGBORN MEMORIAL AIRPORT MALSR APPROACH LIGHTING SYSTEM

1 PANGBORN DRIVE
EAST WENATCHEE, WA 98802

DESIGNED FOR: SD



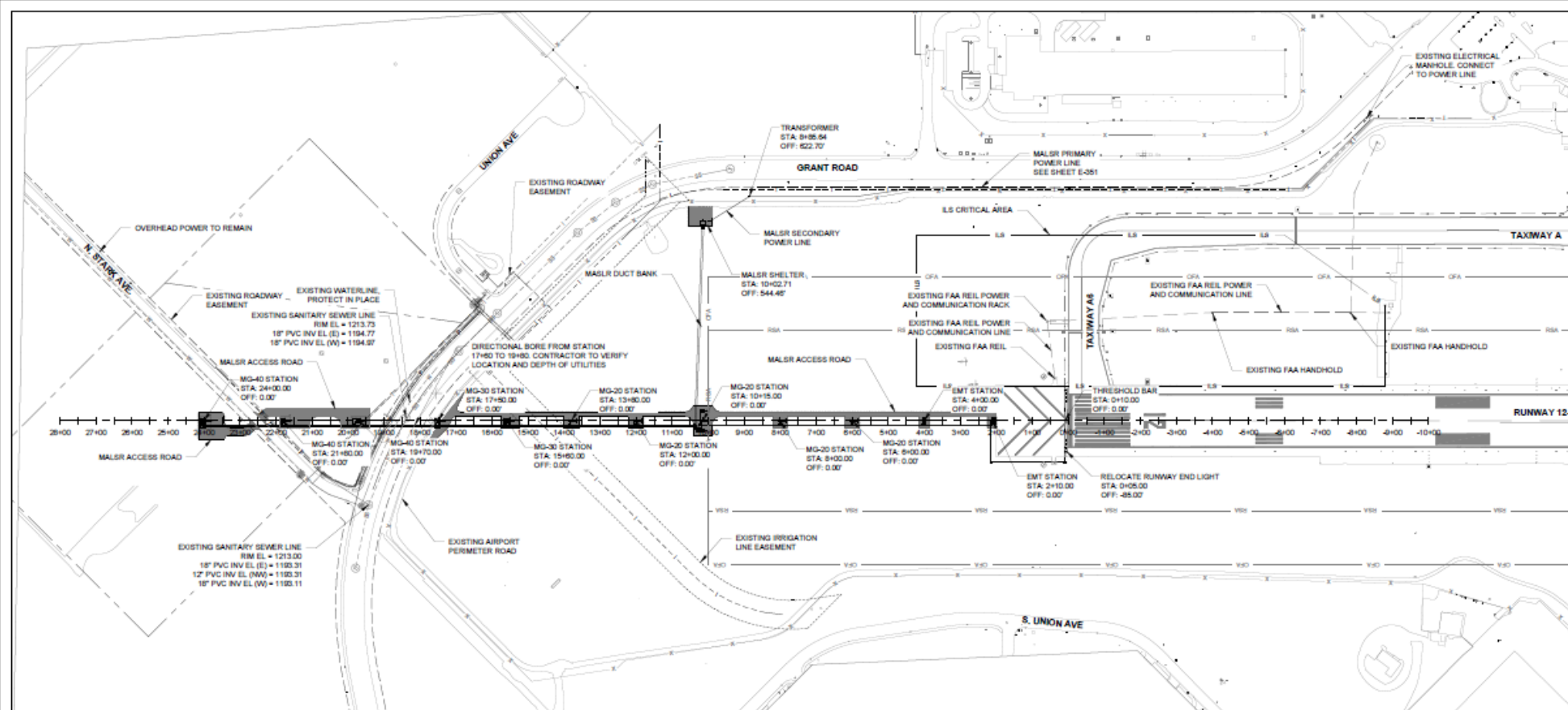
NOT FOR CONSTRUCTION

APP NO: 1822900-220118.01
DATE: MARCH 2022
DRAWN BY: TSG
CHECKED BY: TSG
SCALE: AS SHOWN

PROJECT LOCATION
SITE LAYOUT &
UTILITY PLAN

SHEET NO.

E-201



MALSR LAYOUT INFORMATION

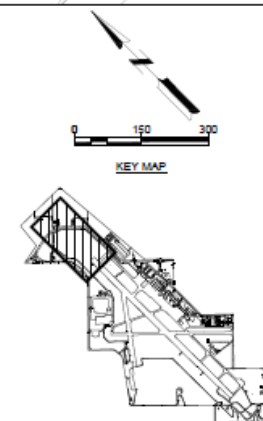
MALSR STATION	FLASHING LIGHTS					STEADY BURNING LIGHTS						
	24+00	21+80	19+70	17+50	15+80	13+80	12+00	10+15	8+00	6+00	4+00	0+10
TYPE OF SUPPORT	MG-40	MG-40	MG-40	MG-30	MG-30	MG-20	MG-20	MG-20	MG-20	MG-20	EMT	EMT
APPROXIMATE HEIGHT	35.00	32.26	30.45	26.58	23.89	20.62	17.49	14.22	10.71	7.29	3.89	1"
ELEV. OF CL OF LIGHT PLANE	1247.11	1244.07	1241.16	1238.11	1235.48	1232.99	1230.50	1227.94	1224.97	1222.20	1219.43	1216.82
APPROX TOP OF FOUNDATION	1212.11	1211.81	1208.91	1211.54	1211.59	1212.37	1213.01	1213.72	1214.26	1214.91	1215.54	1216.14
AIMING ANGLE	6	5	5	5	5	3.7	3.6	3.5	3.4	3.3	3.2	3.1

*ELEVATION MAY VARY FROM WHAT IS INDICATED. HEIGHT OF LIGHT MAY NOT EXCEED 14" ABOVE THRESHOLD ELEVATION.

** FOUNDATION ELEVATION GIVEN FROM STATION 19+80 TO 21+80 ARE APPROXIMATE. SET FOUNDATION HEIGHTS BASED ON SURROUNDING GRADE AT THE TIME OF CONSTRUCTION. ADJUST STATION HEIGHT AS NEEDED TO MAINTAIN GIVEN LIGHT PLANE ELEVATION.

UTILITY PURVEYOR TABLE

EXISTING UTILITY	CONTACT	TELEPHONE	EMAIL
DOUGLAS COUNTY PUD - ELECTRIC/COMMUNICATIONS	DENNIS BAKER	509-881-2234/2235	DENNIS@DCPUD.ORG
DOUGLAS COUNTY PUD - ELECTRIC/COMMUNICATIONS	DAN DAY	509-881-2290	DDAY@DCPUD.ORG
DOUGLAS COUNTY PUD - ELECTRIC/COMMUNICATIONS	MARTIN ESCALARA	509-881-2227	MARTINE@DCPUD.ORG
DOUGLAS COUNTY SEWER DISTRICT NO. 1	KURT HOSMAN	509-630-4099	KURT@COCOSEWER.ORG
EAST WENATCHEE WATER DISTRICT	COLBY THORPE	509-884-3569	CTHORPE@EWWD.ORG
GREATER WENATCHEE IRRIGATION DISTRICT	CRAIG GYSELINCK	509-884-4042	CRAIG@GWID.ORG
ZIFLY FIBER	CHESNA KERN	509-859-3710	CHESNA.KERN@ZIFLY.COM
CASCADE NATURAL GAS	CHANTEL SCOTT	509-662-4960	CHANTEL.SCOTT@CNGC.COM
AIRPORT OPERATIONS	RON RUSS	509-884-4700	RONR@CORRA.ORG
FAA/ATO	EVAN EDWARDS	509-742-2602	EVAN.D.EDWARDS@FAA.GOV
DOUGLAS COUNTY TRANSPORTATION & LAND SERVICES	MIKE NEER	509-884-7173	MNEER@CO.DOUGLAS.WA.US





Examples of MALSR Lights

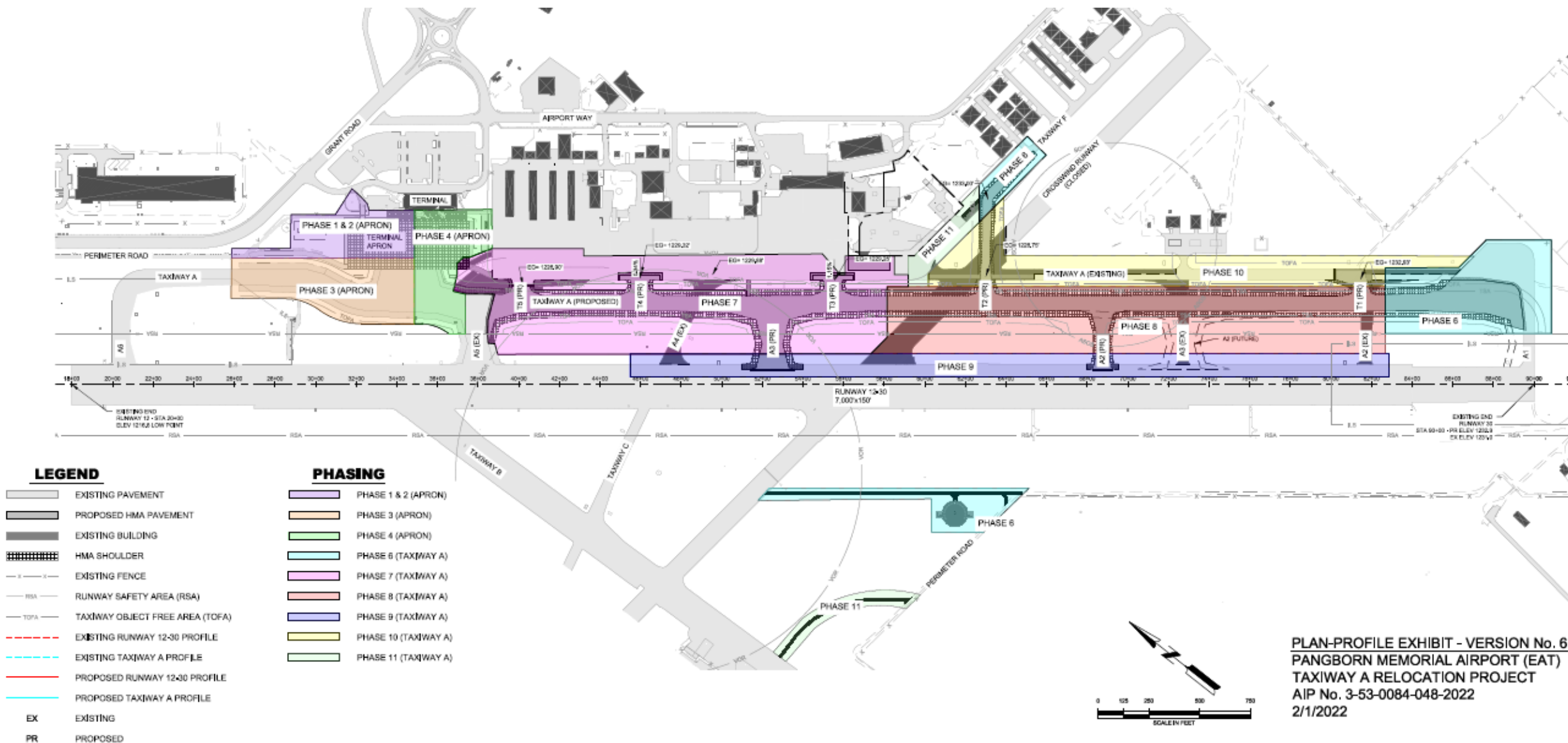


Pangborn Memorial Airport MALSR Project Schedule

Notice to Proceed	Sept 12, 2022
Night Closures (5pm to 8am)	Oct 26 – Nov 8
Full Runway Closure	Nov 9 – Nov 11
Night Closures (5pm to 8am)	Nov 12 – Nov 14
Project Complete	Dec 2, 2022
Flight Check	~ Dec 10, 2022
Flight Procedure Change Published	Feb 2023



Pangborn Memorial Airport Taxiway Alpha Reconstruction





Pangborn Memorial Airport General Aviation Terminal

EXISTING CONDITIONS

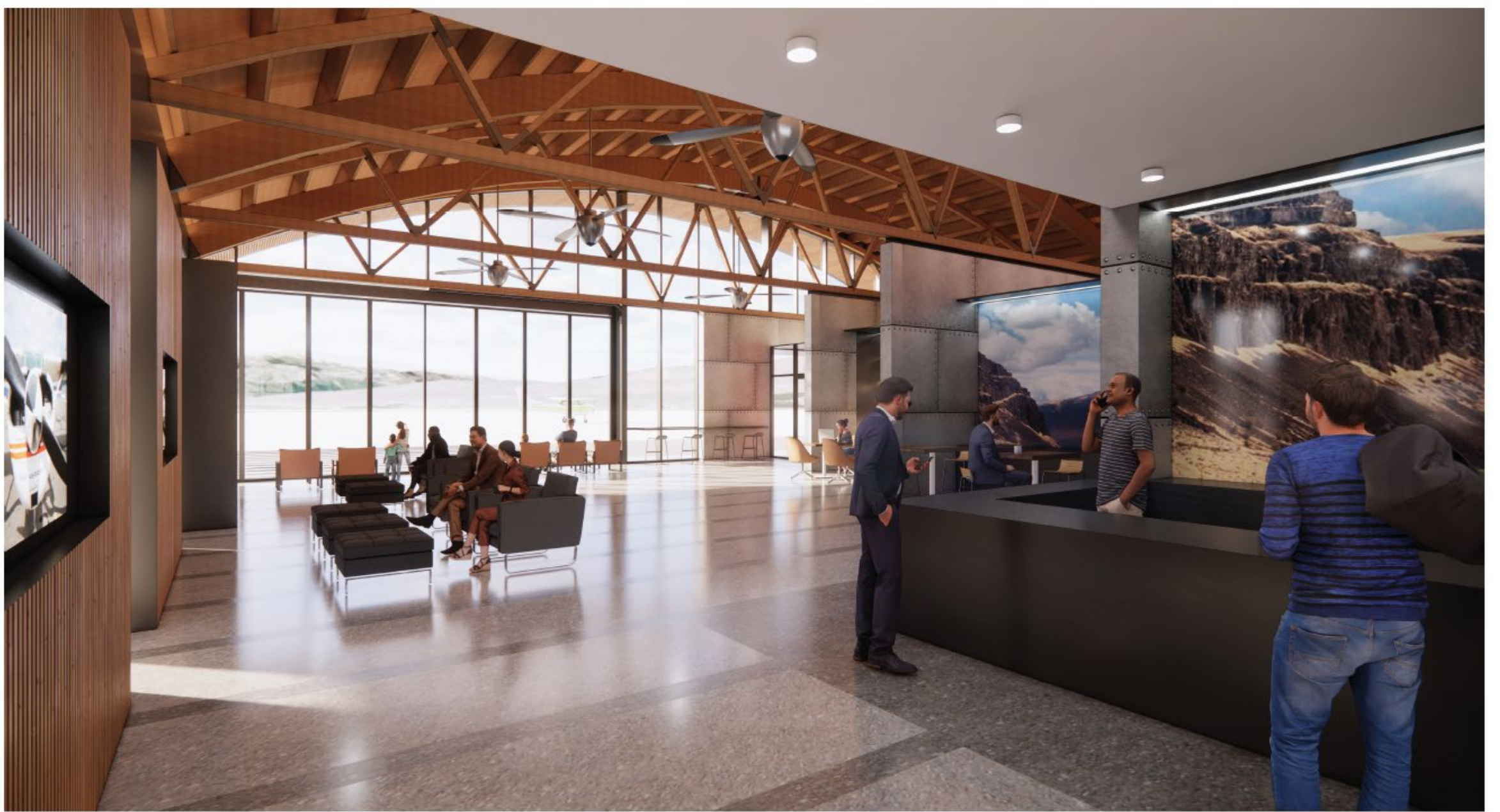




AIRSIDE ENTRY



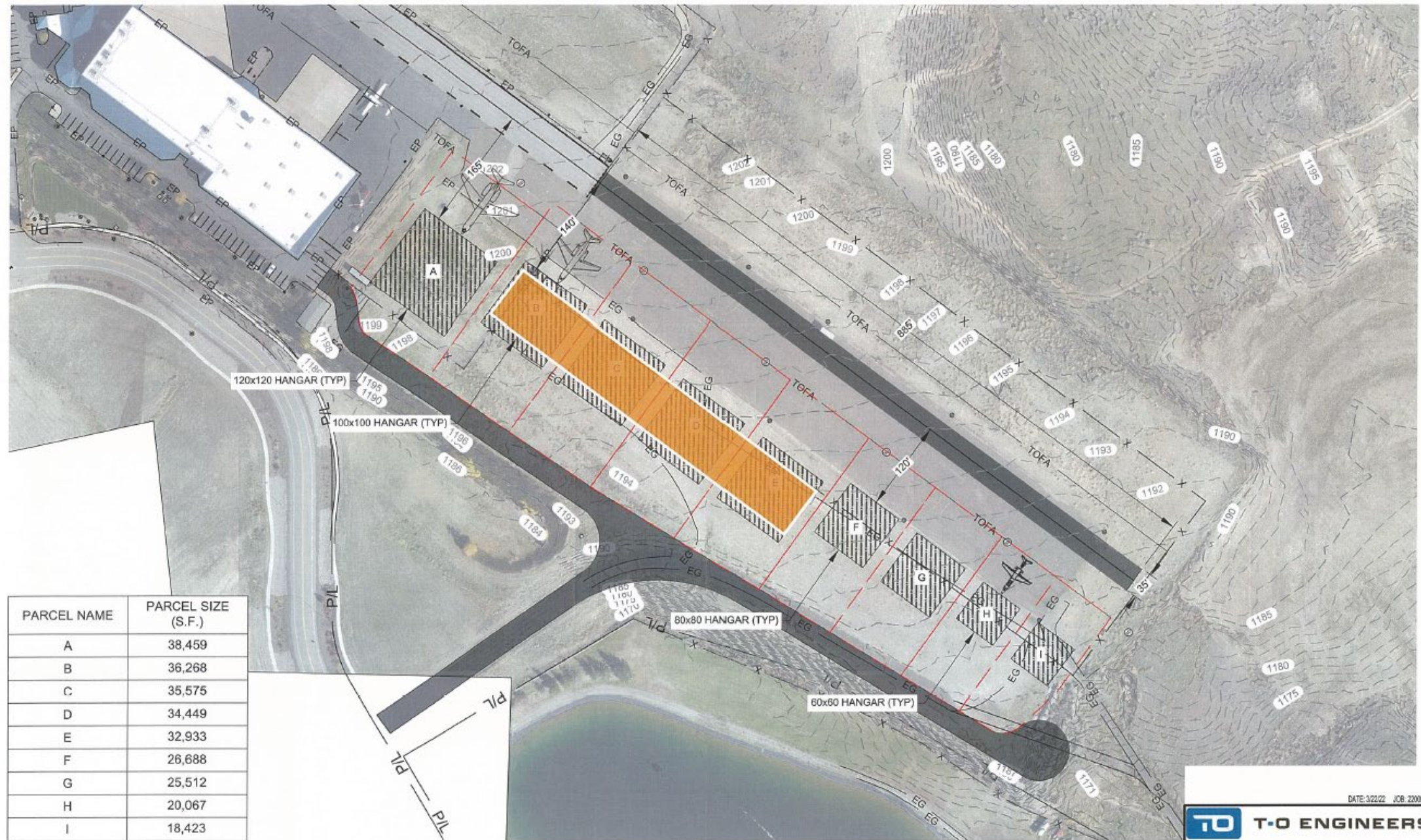




TERMINAL



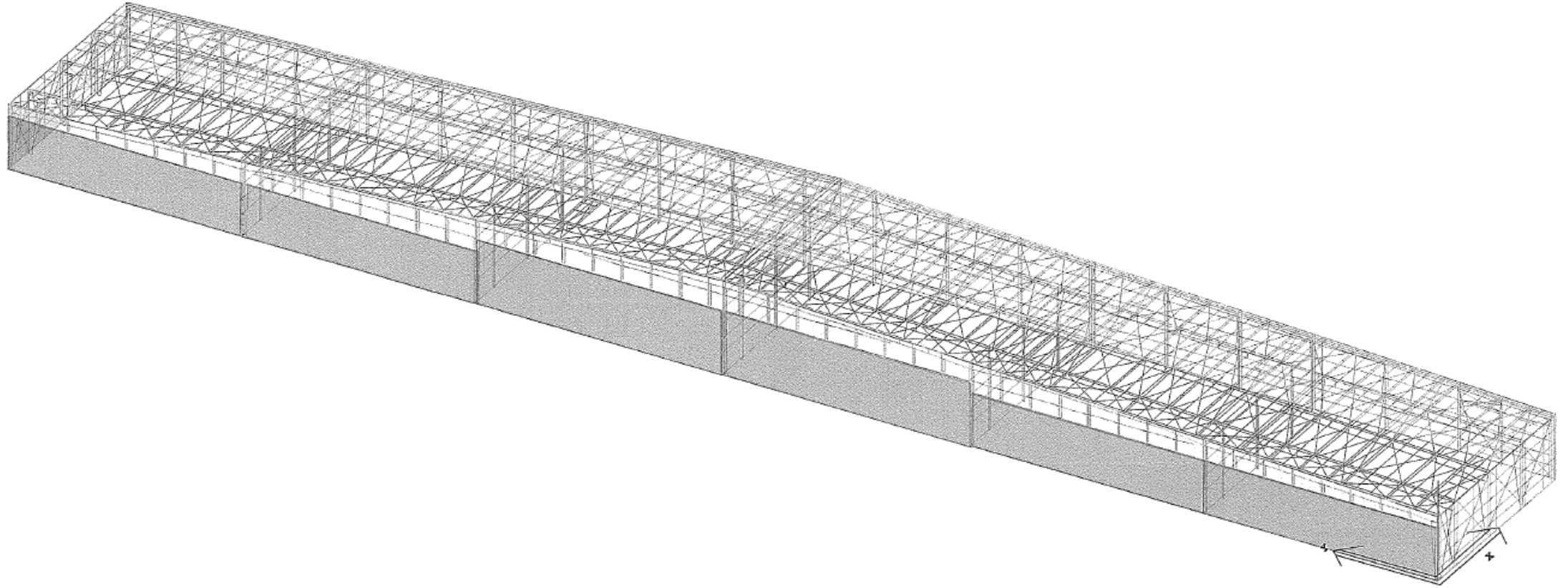
Southside Private Hangar Development



PANGBORN PHASE 1 HANGAR DEVELOPMENT EXHIBIT



Pangborn Hangars



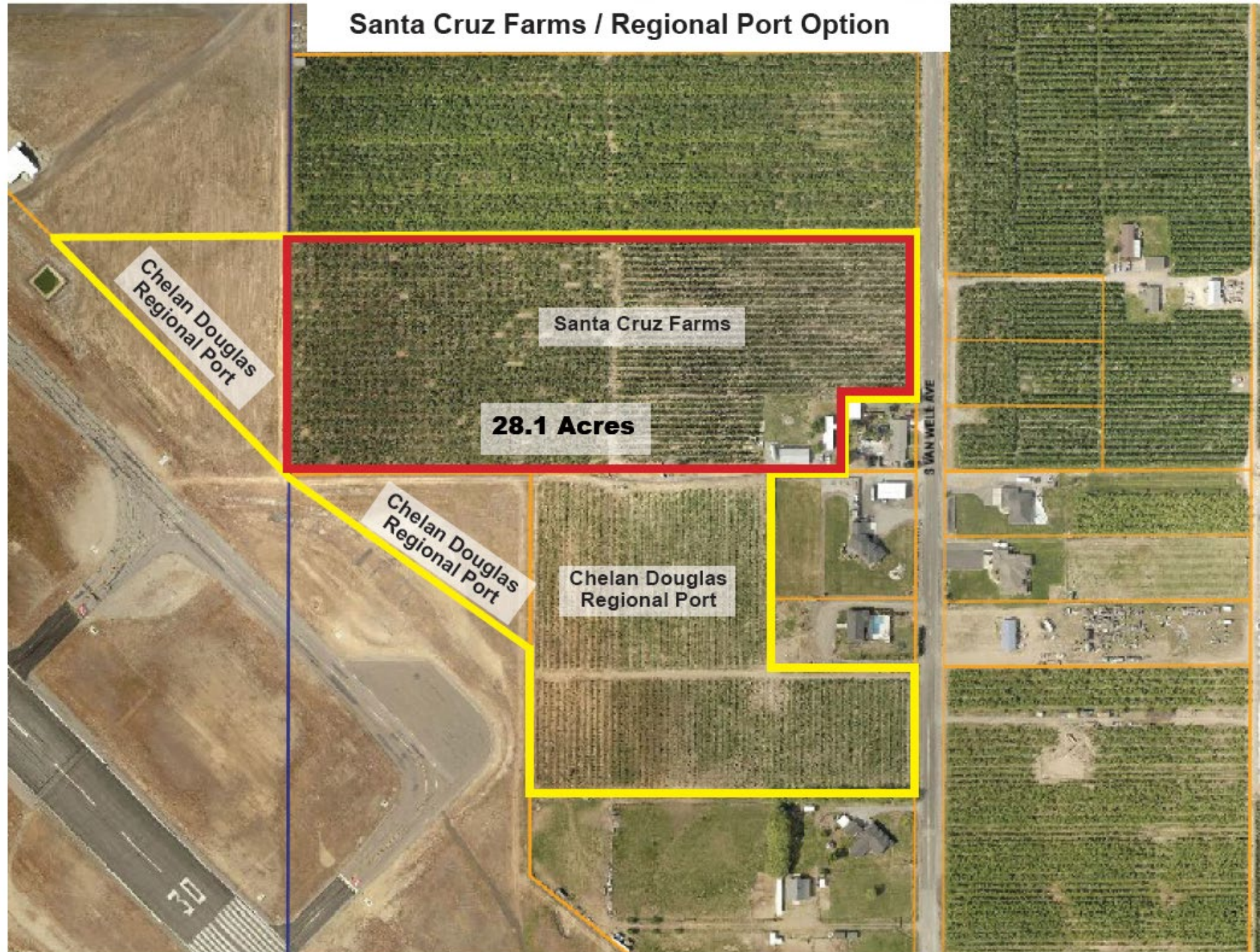
Overall Building Description

Shape	Overall Width	Overall Length	Floor Area (sq. ft.)	Wall Area (sq. ft.)	Roof Area (sq. ft.)	Max. Eave Height	Min. Eave Height 2	Max. Roof Pitch	Min. Roof Pitch	Peak Height
Hangars	490/0/0	70/0/0	34300	29642	34330	22/0/0	22/0/0	0.500:12	0.500:12	32/2/8



Army National Guard

Santa Cruz Farms / Regional Port Option





Cheyenne, WY Army National Guard Facility





***Working Together to Enhance the Economic
Vitality of North Central Washington***