



# Airport Update

March 29, 2022

# Pangborn Memorial Airport Update

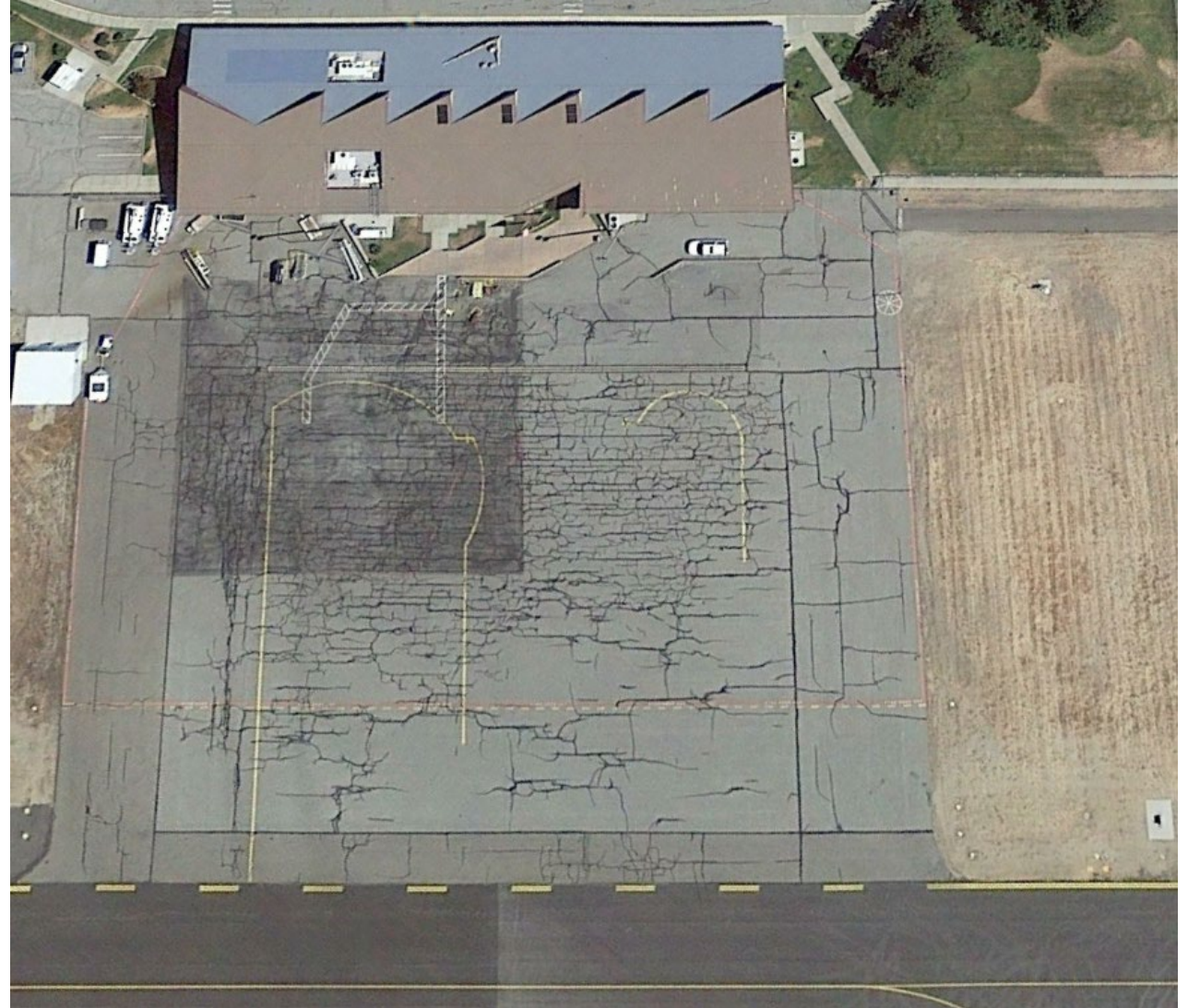




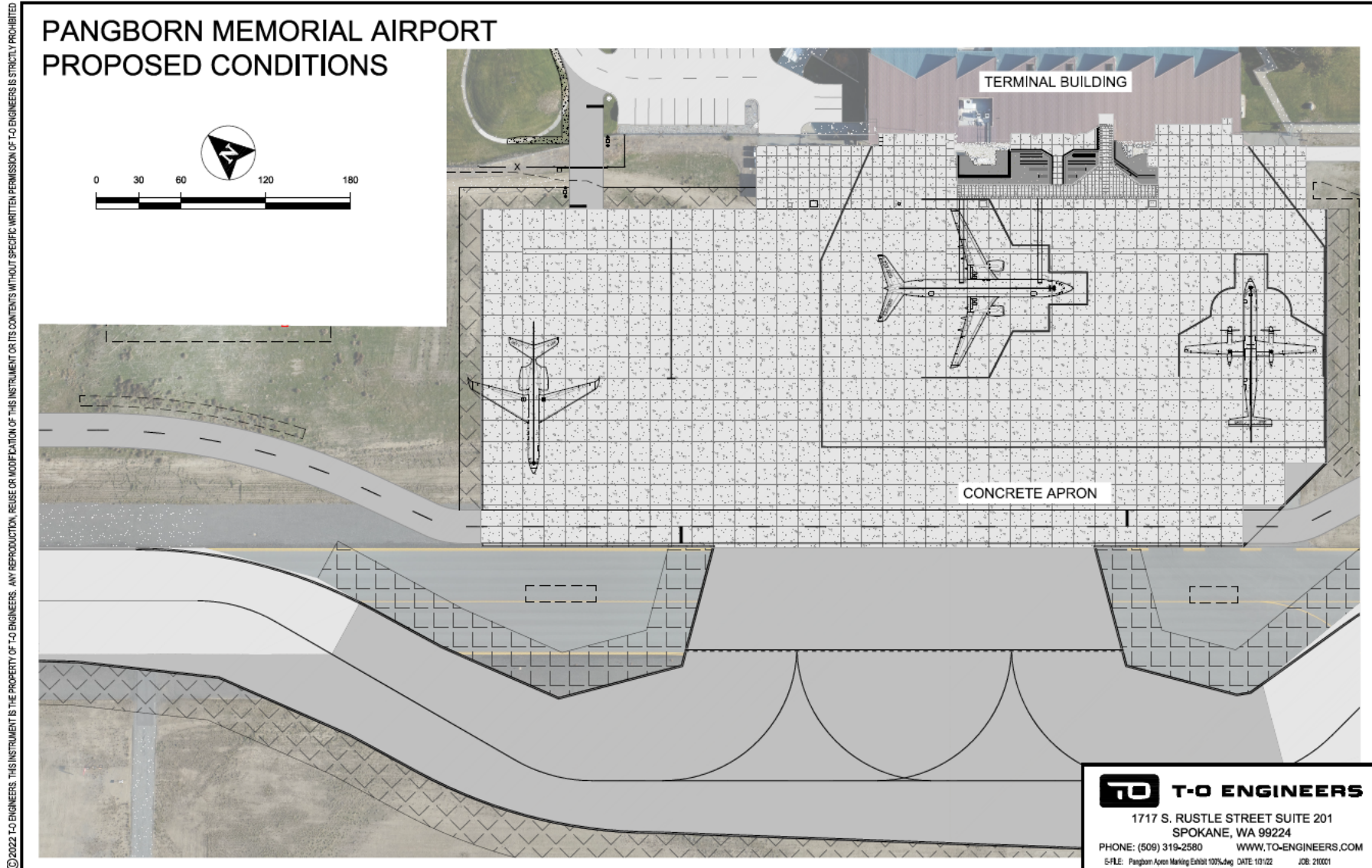
# Terminal Apron Reconstruction

**\$10.9 Million**

**Local Contractor:  
Hurst Construction**



# Terminal Apron Reconstruction





# Terminal Apron Reconstruction



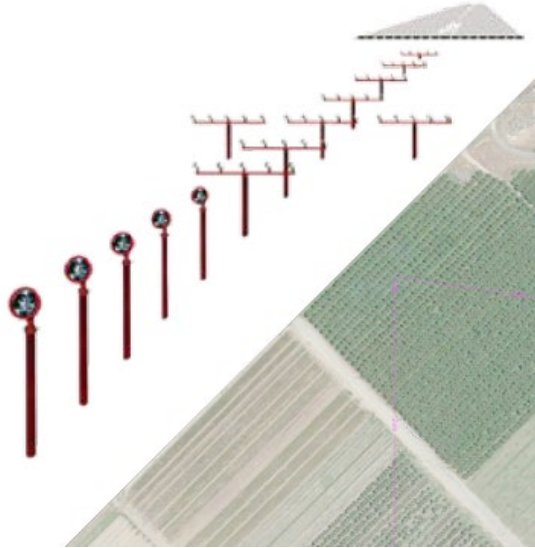
DATE	DESCRIPTION	BY	CHECKED

**T-O ENGINEERS**  
 COLLECTIVE ENGINEERS, SURVEYORS & PLANNERS  
 717 E. FRONT STREET, SUITE 101  
 WENATOCHE VALLEY, OR 97142  
 PHONE: 503.265.1234 WWW: T-ONEENGINEERS.COM  
 BRIDGE & TOWER CONSULTANTS, LICENSED ENGINEER AND ARCHITECT  
 LICENSE NO. 31474

PANGBORN MEMORIAL AIRPORT  
 TERMINAL APRON RECONSTRUCTION  
 TERMINAL APPROACH RENDERING

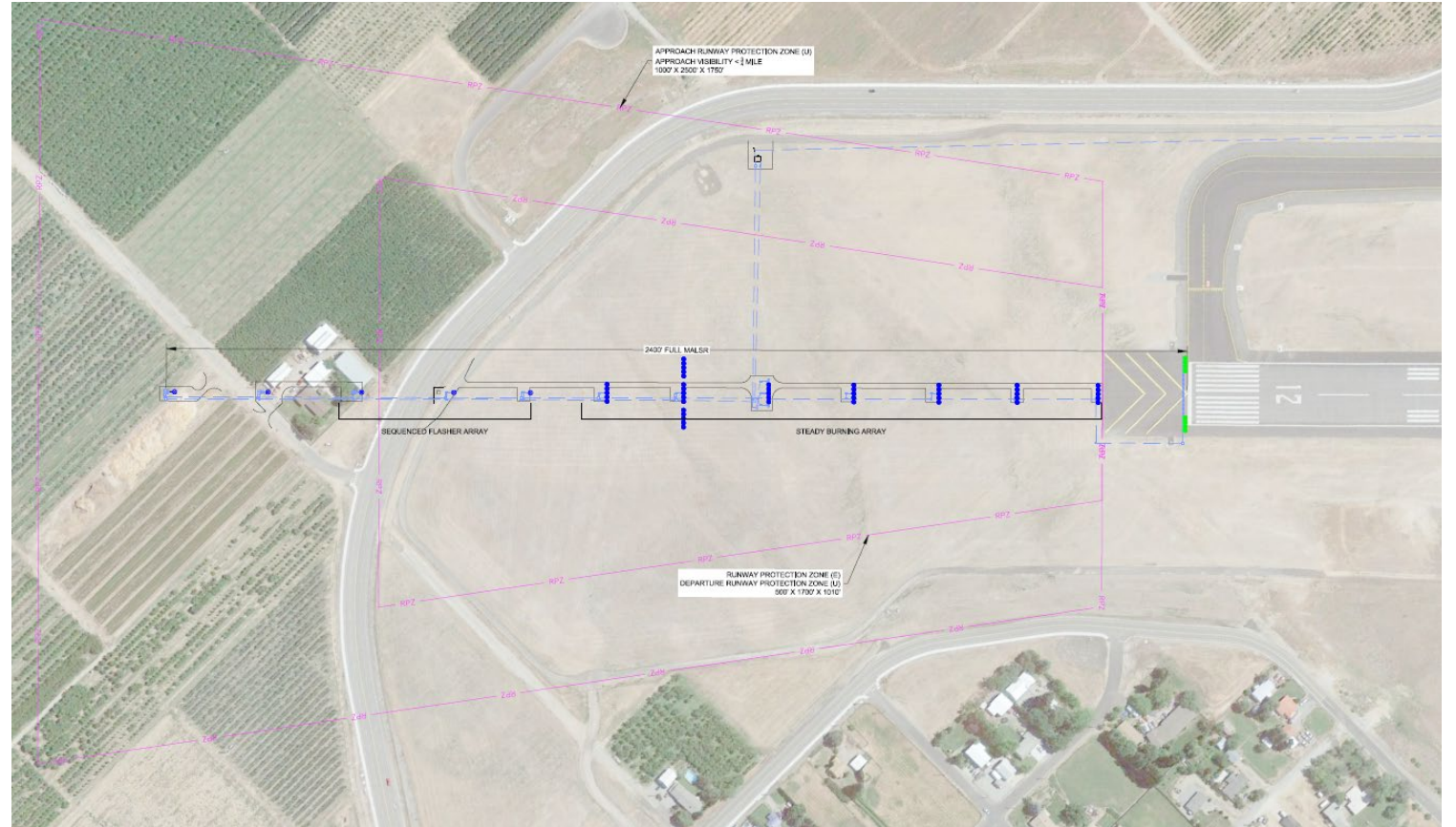
ATTENTION:  
 IF BRIBING CODES ARE RELEVANT TO THIS PROJECT, PLEASE CONTACT THE PROJECT MANAGER AT THE OFFICE.  
 ALL DRAWINGS SHALL BE PRINTED AT 1/4" = 1' UNLESS OTHERWISE NOTED.  
 DATE: 08/19/11 BY: T-O  
 PROJECT: PANGBORN MEMORIAL AIRPORT  
 SHEET: 2 OF 2

# MALSR System



**Medium Intensity Approach  
Lighting System with Runway  
Alignment Indicator Lights**

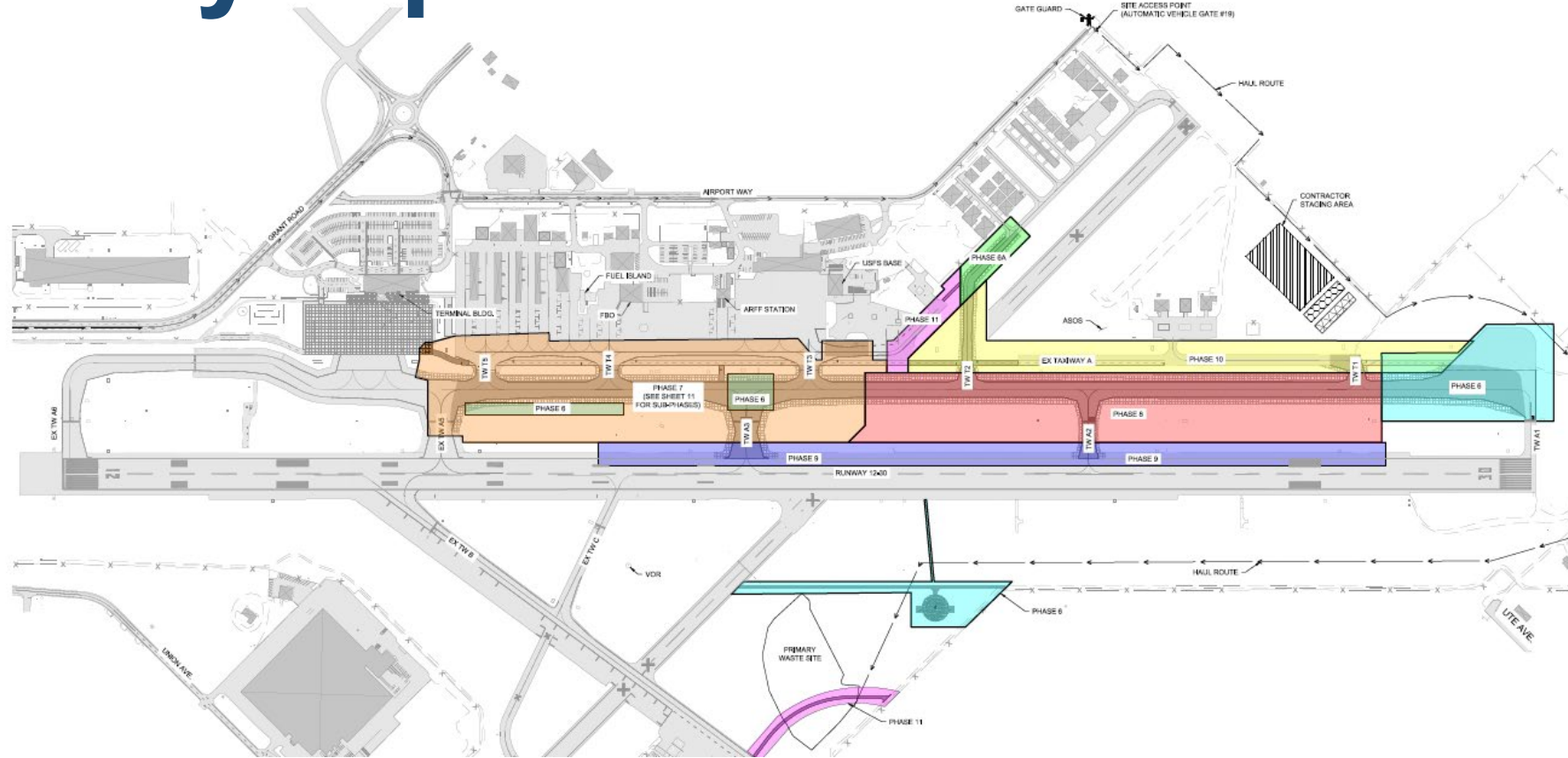
**\$4.4 Million**



**Improve Commercial Air Service Reliability by 60%**



# Taxiway Alpha Reconstruction



**\$20.5 Million**

**Local Contractor – Selland Construction**

# Future FAA Funded Capital Projects:

**Reconstruction of  
Runway R12/R30**

**\$35 Million**

**Fiscal Year 2025**





# GA Terminal Building - Current



# GA Terminal Building - Rendering

**\$4.5 Million**

**In Process of  
Selecting  
Architectural Firm**

**Bid Project Fall  
2022**

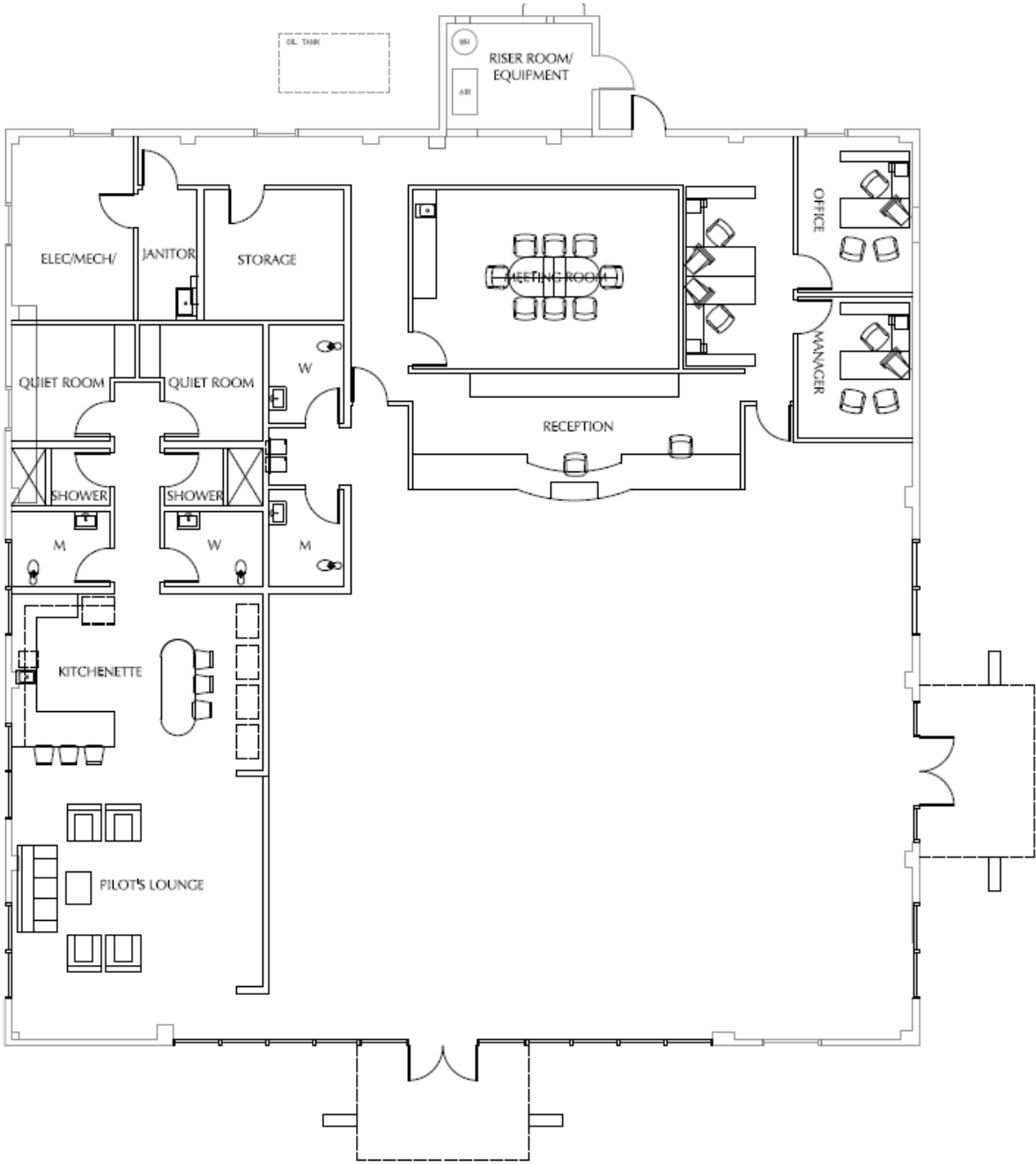




# GA Terminal Building - Rendering



# GA Terminal Building Layout





# Executive Flight Building Washington State Army National Guard



# WA State Army National Guard

- Possible relocation from Fairchild Air Force Base
- 28 Full-Time Jobs for Greater Wenatchee Area
- 100 Army National Guard Reserves
  - Training One Weekend Per Month at Pangborn Airport



# WA State Army National Guard

- **Current Fleet**
  - 6 (UH-72 Lakota) Helicopters
  - 3 (UH-60 Blackhawk) Helicopters



# WA State Army National Guard

## Why Wenatchee?

- Quicker Response Times to Fires in NCW
- Significant Cost Savings to DNR
- Proximity to:
  - Yakima Firing Range
  - JBLM Base
- Less Blade Hours



# Trades District Pangborn Airport Business Park





# Trades District

**Repurposing 25 former Giga Watt pods into small business production space**

**Each Building: 1,350 Sq. Ft.**

## **Funding:**

<b>Regional Port</b>	<b>\$2.5 Million</b>
<b>State Capital Budget</b>	<b>\$3.0 Million</b>
<b>EDA Grant – Pending</b>	<b>\$5.0 Million</b>

## **Special Thanks to:**

- Wenatchee Valley Chamber of Commerce – Hispanic Business Council**
- Rep. Mike Steele, Rep. Keith Goehner, & Sen. Brad Hawkins**
- Douglas County Commissioners**



# Trades District – Flex Space Concept





# Commercial Air Service Updates

- **Alaska Airlines**



# Alaska Airlines – New Fleet

- Horizon hopes to phase out its 32 Q400
- Transition to Embraer E175 jets by end of 2023



# Passenger Enplanements

Passenger Enplanements: Jan. - Dec.			
	<u>2021</u>	<u>2020</u>	<u>2019</u>
January	2,465	4,957	4,831
February	2,789	4,640	4,331
March	3,744	2,235	5,173
April	3,795	186	4,624
May	4,120	517	5,168
June	4,770	1,031	5,888
July	5,599	1,503	6,180
August	4,987	2,297	5,701
September	4,593	2,001	5,213
October	4,150	2,596	5,413
November	3,404	2,548	5,674
December	3,922	2,497	6,494
<b>Total</b>	<b>48,338</b>	<b>27,008</b>	<b>64,690</b>





CHELAN DOUGLAS  
**Regional**   
**Port** AUTHORITY





CHELAN DOUGLAS  
**Regional**   
**Port** AUTHORITY