

ROCKY REACH RECREATION STUDY SUMMARY OF PEAK-SEASON 1999 MONITORING

Introduction

Peak-season recreation monitoring was conducted from May 30 through September 9, 1999. Seven public recreation sites were monitored during the peak-season including Chelan Falls Park, Beebe Bridge Park, Daroga State Park, Orondo River Park, Entiat Park, Lincoln Rock State Park and Rocky Reach Dam. Attachment A shows the 1999 peak-season monitoring schedule.

Monitoring efforts at the seven recreation sites included car runs and on-site surveys. A total of 16 car runs were conducted during the peak-season. This included driving to each of the seven recreation sites and recording the number of people at the site and the activities they were engaged in. License plate numbers of vehicles at the sites were also recorded in order to determine where visitors are from, and the number of vehicles with trailers were recorded to estimate boat ramp use.

On-site surveys were conducted during eight survey days at each of the seven recreation sites in the Rocky Reach Project area. During on-site surveys, interviewers asked visitors questions including where they were from, how long they were staying, what activities they are participating in during their visit and questions related to their likes, dislikes and attitudes regarding their recreation experience during their visit. Additionally, interviewers documented the number of day users, campsites in use, and the number of empty vehicles with trailers at the sites in order to estimate visitor use during survey days.

Daily use data was requested from park owners/managers. This data, if available, will be used to supplement the field monitoring data.

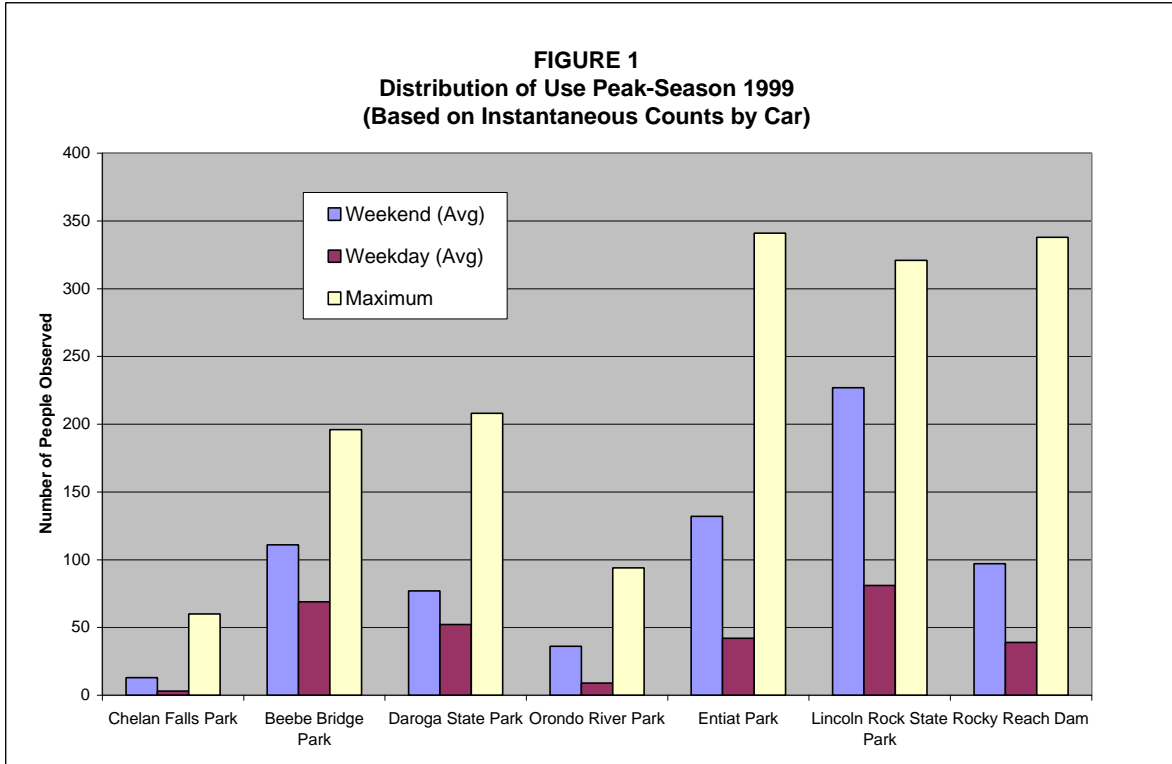
The following provides preliminary results of the peak-season field monitoring efforts.

Distribution of Use

During car runs, instantaneous counts of people were made at each of the seven recreation sites. Figure 1 shows the average number of visitors observed during the peak-season weekday and weekend car runs. It also shows the maximum number of people observed during a single observation.

As shown on Figure 1, the greatest average number of people observed during the weekend car runs were at Lincoln Rock State Park and Entiat Park. During weekday car runs, more people were observed at Lincoln Rock State Park and Beebe Bridge Park. The greatest number of people observed during a single car run was at Entiat Park with 341 people observed at the park at one time. Rocky Reach Dam came in second with 338

people observed at one time, and Lincoln Park came in third with 321 people observed at the park at one time.

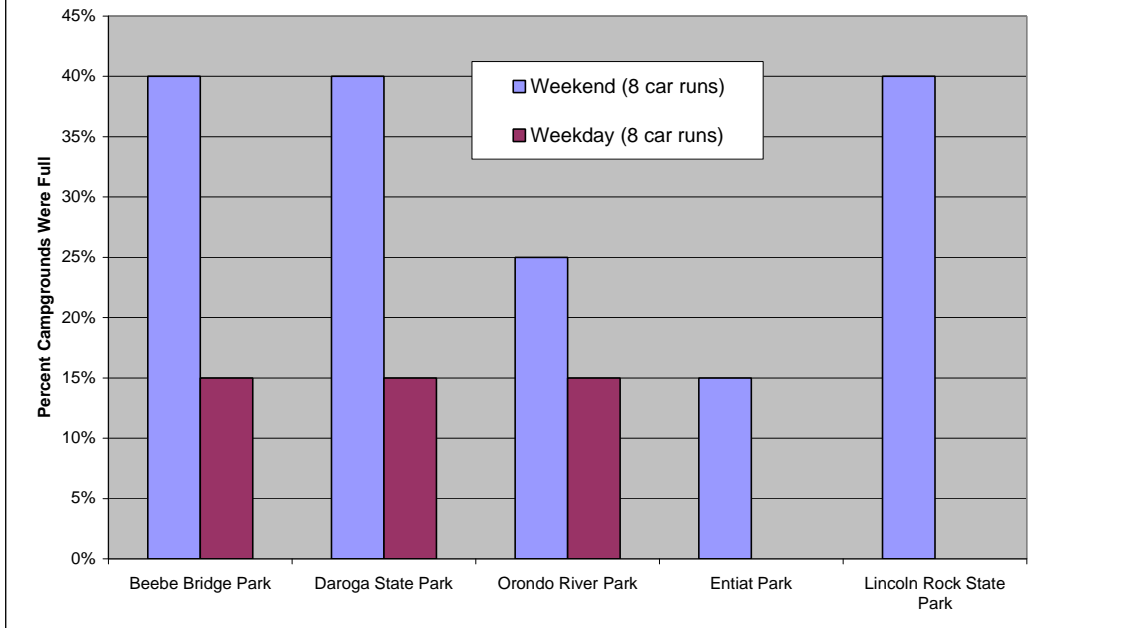


Out of the seven public recreation sites that were monitored, five of these have camping facilities. These sites include Beebe Bridge Park with 46 RV/tent sites, Daroga State Park with 28 tent/RV sites and 17 walk-in or boat-in sites, and Orondo River Park with 14 designated RV/tent sites and a large grassy area that can accommodate 10 to 15 tents. The largest of the five camping sites are Entiat Park with 50 tent sites and 31 RV sites, and Lincoln Rock State Park with 94 tent/RV sites.

During eight peak-season weekend car runs, campgrounds at Beebe Bridge Park, Daroga State Park and Lincoln Rock State Park were full approximately 40 percent of the time. Orondo River Park was full approximately 25 percent of the time and Entiat Park was full approximately 15 percent of the time (Figure 2).

During eight peak-season weekday car runs, Beebe Bridge Park, Daroga State Park and Orondo River Park were full approximately 15 percent of the time (Figure 2).

**FIGURE 2
Car Run Observations
Campground Occupancy Levels**

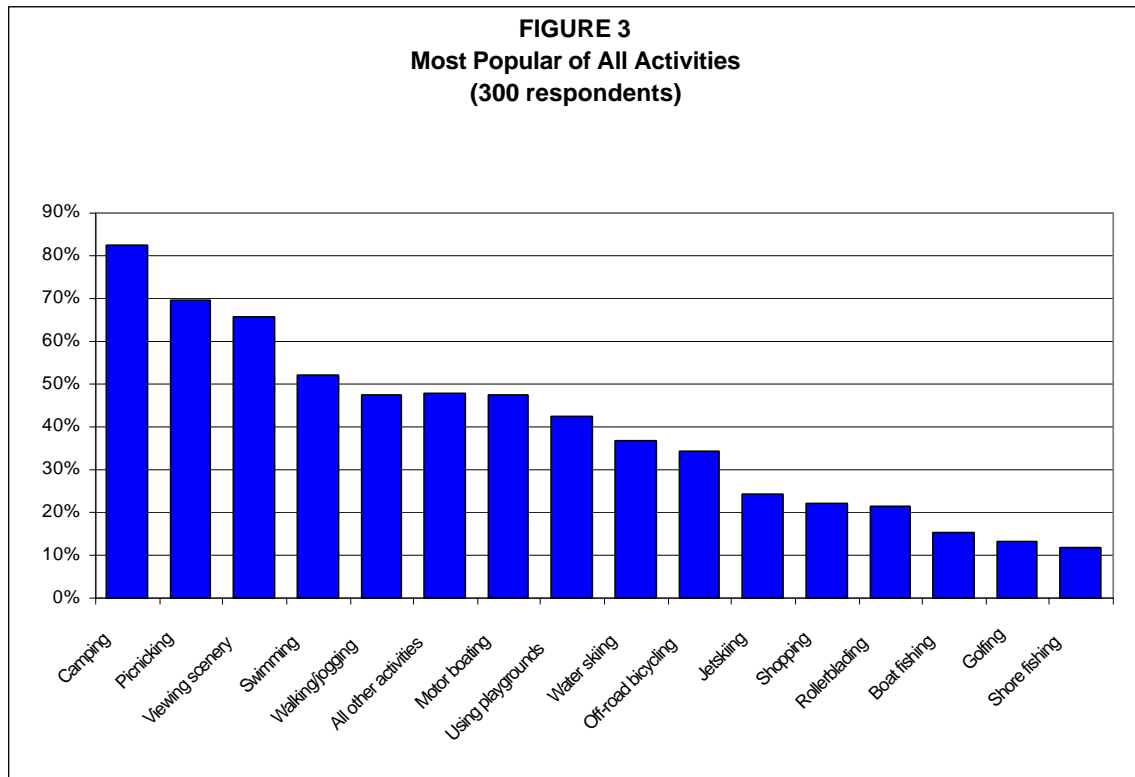


The next step in the analysis of recreation use in the Rocky Reach Project area is to estimate the average daily recreation use at recreation sites. This will be done using car run and on-site survey counts including the number of occupied campsites, the number of people observed in the day use areas, and the number of empty vehicles with trailers. Campground use will be estimated by multiplying the number of occupied campsites by an average of 6 people per camp site. Non-boating related day use estimates will be calculated by multiplying the number of people observed participating in day use activities by a turnover rate of two. Boat ramp use at facilities will be calculated by multiplying the number of vehicles with trailers by an average of three people per vehicle and a turnover rate of two for boating. If daily use data becomes available in a suitable format from park owner/managers, it will also be used to supplement field data recreation use estimates.

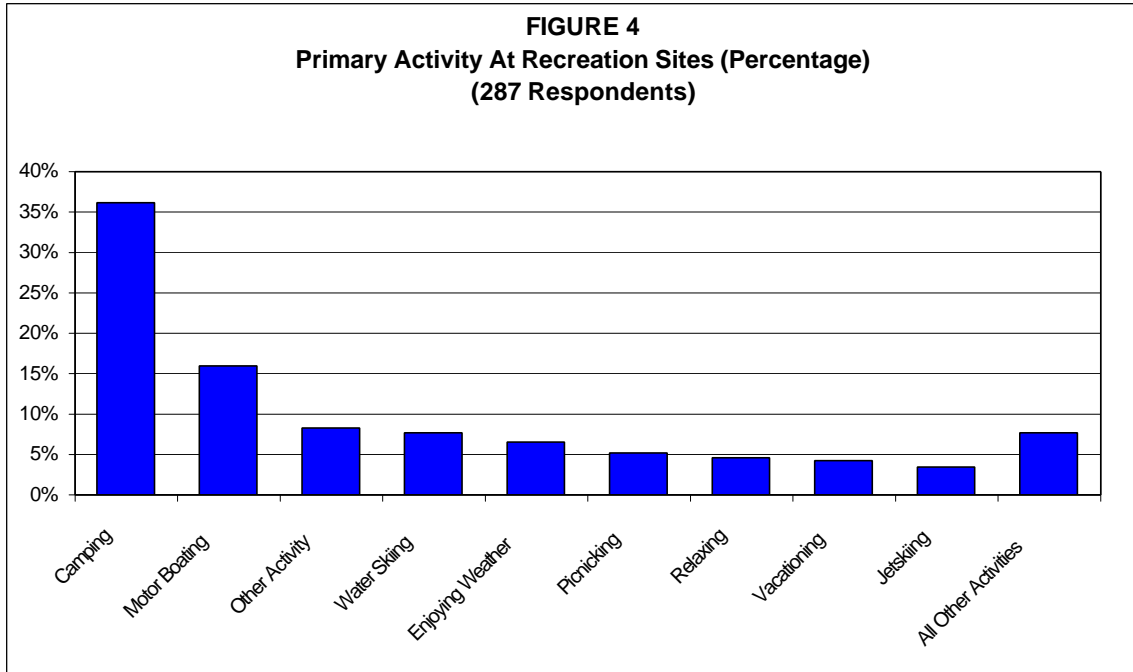
Daily use estimates will be compared with estimated daily capacities for each site. Estimated daily capacities for each site will be calculated based on the number of day use parking spaces multiplied by an average of 3 people per vehicle and a turnover rate of 2, plus the number of camp sites multiplied by an average of 6 people per camp site.

Activities

During on-site surveys, visitors at the seven monitored public recreation sites were asked to pick from a list of 25 activities, all of the activities that they will be participating in during their visit to the area. The most popular activities out of 300 respondents were camping, picnicking, viewing scenery, and swimming (Figure 3).



Visitors were also asked to pick one activity that best describes their primary reason for visiting Rocky Reach (Lake Entiat). Figure 4 shows the most popular primary activities of 287 survey respondents. Camping was the most popular primary activity followed by motor boating and water skiing. The last column on Figure 4 (All Other Activities), are all the primary activities that ten or fewer respondents selected and include using playgrounds, viewing scenery, visiting friends/relatives, swimming, visiting dam, boat fishing, berry picking and hang gliding.



Visitor Satisfaction

Recreation Sites

During on-site surveys, visitors were asked to rate the site they were visiting on a scale of 1 to 10, with 10 being the highest. Figure 5 summarizes the average rating given for recreation sites. Numbers in parentheses next to the site names indicate the number of survey responses.

All seven of the recreation sites were given high ratings. Orondo Park and Entiat Park were given the lowest ratings of 8.7 and 8.5, respectively. The other five parks were given average ratings of 9 or above.

Activities

During on-site surveys, interviewees were asked how they rated their primary activity on their trip, on a scale of 1 to 10 with 10 being the highest. In general, responses were high during the peak-season surveys (Figure 6). Visiting friends/relatives had the lowest average rating of 6. The average rating for other primary activities was above 8.

FIGURE 5
Recreation Site Rating
 (On a scale from 1-10)

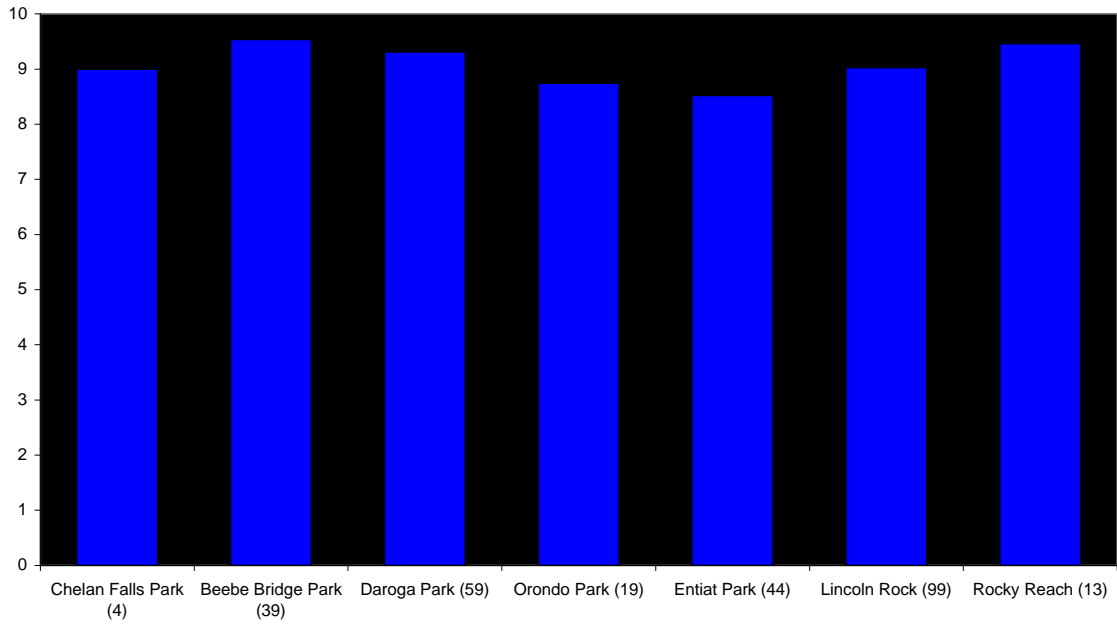
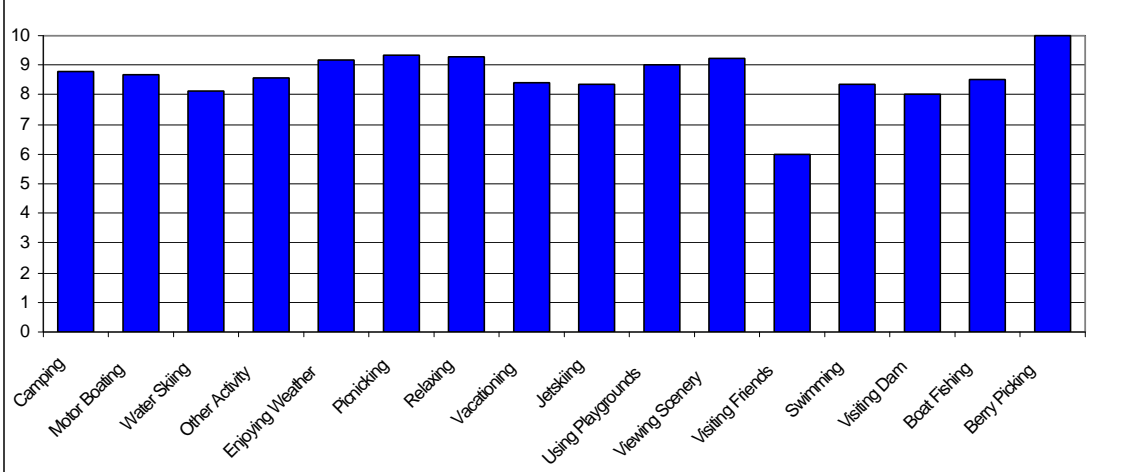
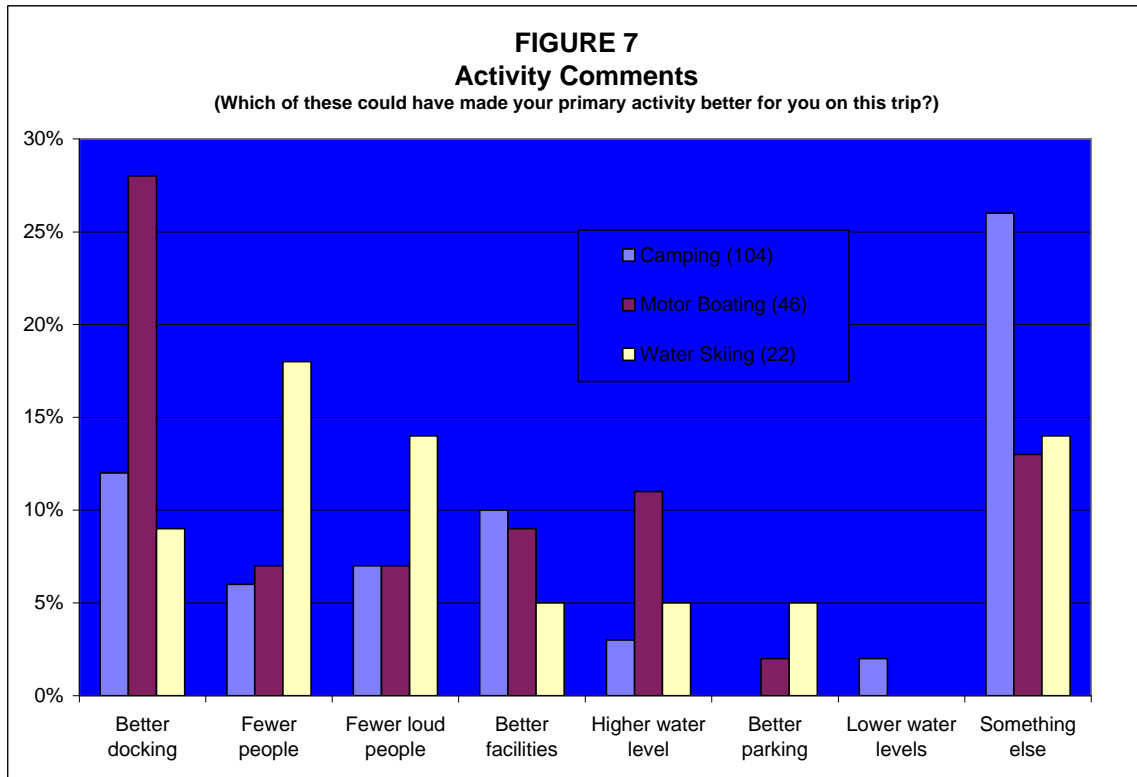


FIGURE 6
Primary Activity Rating
 (On a scale from 1-10)



Survey respondents were asked what could make their primary activity better for them. Surveyors read from a list of items that was tailored to receive information on things that the PUD manages or things that will directly or indirectly measure demand and capacity such as availability of facilities, perceptions of crowding, lake levels, etc. As discussed above, the most popular primary activities of survey respondents were camping followed by motor boating and water skiing. Figure 7 summarizes the items that visitors said could make these activities better for them.

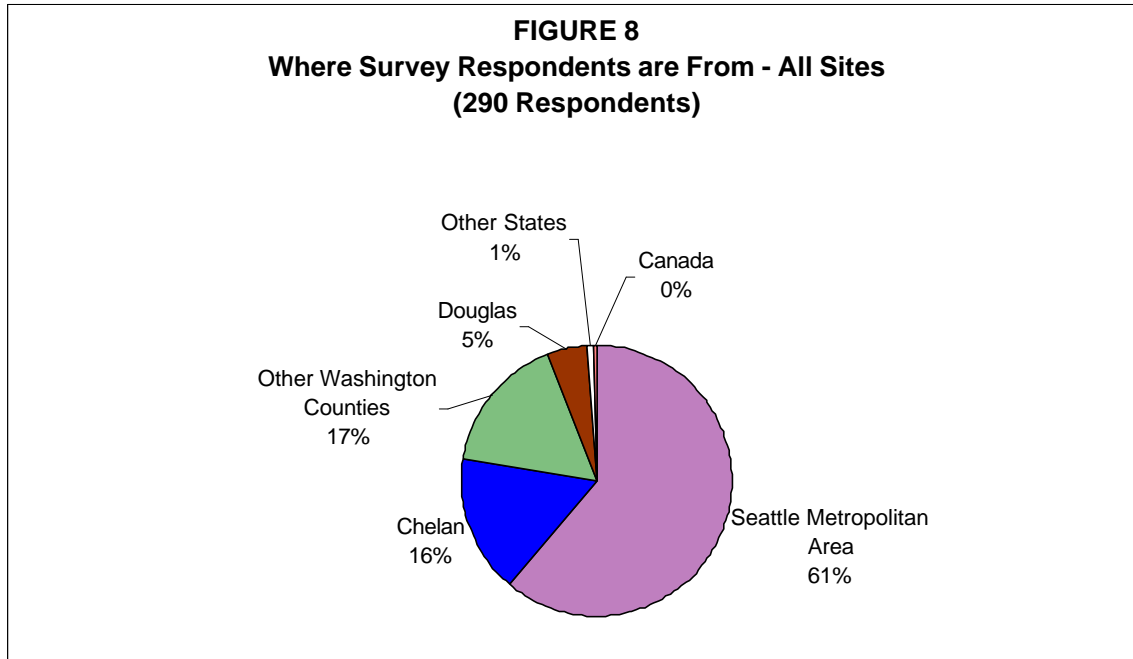


Better docking was frequently reported as an item by mostly visitors whose primary activity was motor boating. Fewer people and fewer loud people were frequently reported by mostly respondents whose primary activity was water skiing. Better facilities was reported by mostly campers and motor boaters, and higher water level was reported mostly by motor boaters.

Responses were reported that were not on the list and are shown as “something else” on Figure 7. These answers included lower fees for boating and camping, keeping the water level constant, removing stumps in middle of lake, sprinklers at camp sites, reducing debris in water, selling wood at campground offices, wind breaks, and signs at campgrounds saying no reservations - first come first served.

Visitor Demographics

On-site surveys during the peak-season showed the majority of visitors to Rocky Reach area recreation sites coming from the Seattle metropolitan area (61 percent). The Seattle metropolitan area includes King, Snohomish, Kitsap, Pierce, and Thurston counties. Approximately 16 percent of survey respondents were from Chelan County and around 5 percent were from Douglas County. Approximately 17 percent of visitors were from other Washington counties including Skagit, Grant, Kittitas, Okanogan, Yakima, Island, Spokane, Whatcom, Grays Harbor and Franklin counties. Few visitors were from other states or from Canada (Figure 8).



Visitor Spending

During on-site surveys at the seven public recreation sites in the Project area, visitors who live outside of the Project area were asked to estimate the total amount of money that they spent in the Rocky Reach area on their trip. This includes camping fees, motels, restaurants, picnic supplies, gas boat tickets, and all the other things that they might spend money on in the area.

Based on the 1999 peak-season surveys, the average amount spent per visitor per day in the Rocky Reach area was \$15.00.

Length of Stay

Approximately 88 percent of the visitors that were surveyed at the seven public recreation sites in the Rocky Reach Project area were staying overnight. Their average length of stay was 4.7 nights

Approximately twelve percent of visitors surveyed were day users with an average length of stay of 4.7 hours.

How Often Visitors Visit

Interviewees at recreation sites were asked how many years they have been coming to Rocky Reach (Lake Entiat) and about how many times a year they visit Rocky Reach (Lake Entiat).

Based on survey responses, visitors have been coming to the Rocky Reach Project area for an average of 7.9 years.

Interviewees stated that they visit the Rocky Reach Project area an average of 3.6 times per year.

ATTACHMENT A
1999 PEAK-SEASON MONITORING SCHEDULE