



Recreation Use Assessment Study Report

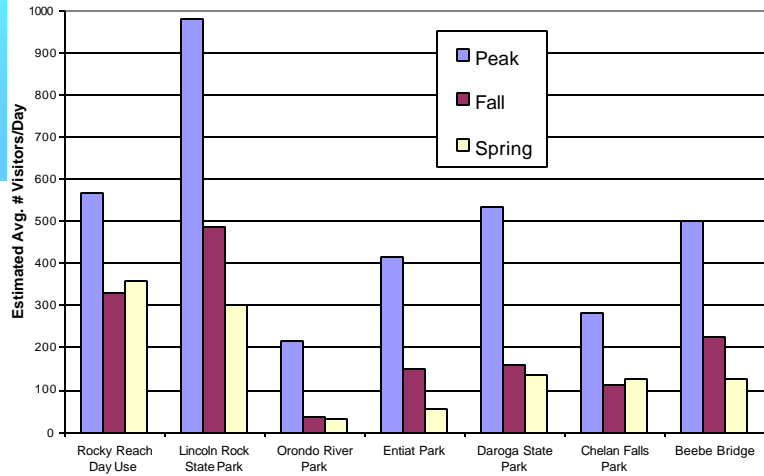
Rocky Reach Hydroelectric Project
Working Group Meeting
November 8, 2000



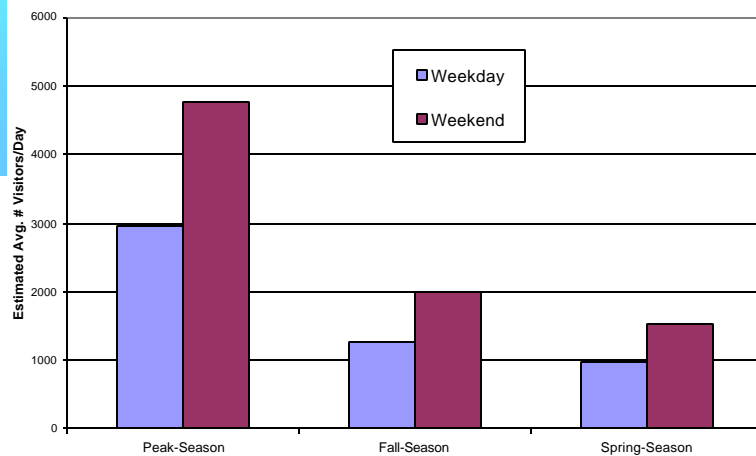
Recreation Use Assessment Study Report Contents

- *Introduction - Background Information*
- *Study Goals and Objectives*
- *Study Area*
- *Methodology*
- *Results*
 - *Recreation Sites*
 - *Use/Utilization - Site Comparisons*
 - *Rocky Reach Reservoir - Watercraft & Undeveloped Shoreline Use*
 - *Project Area - Demographics, Visitor Satisfaction, Spending, Number of Visits to Area, Visitor Trends*
- *Displaced Use*

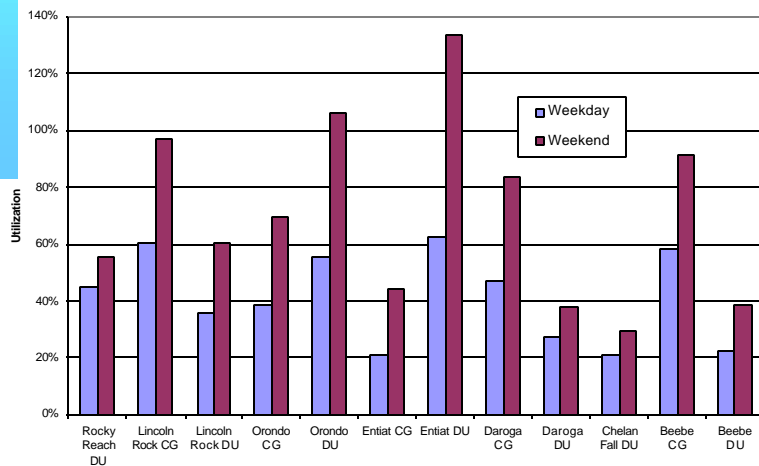
Recreation Use Assessment Seasonal Recreation Use



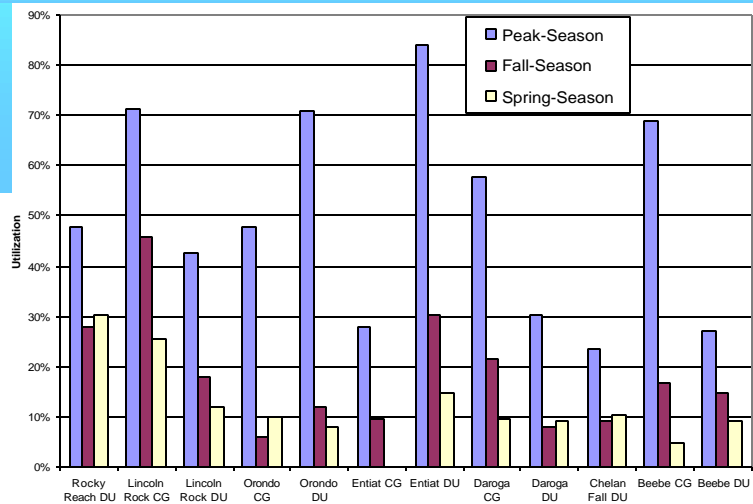
Recreation Use Assessment Recreation Use (weekend/weekday)



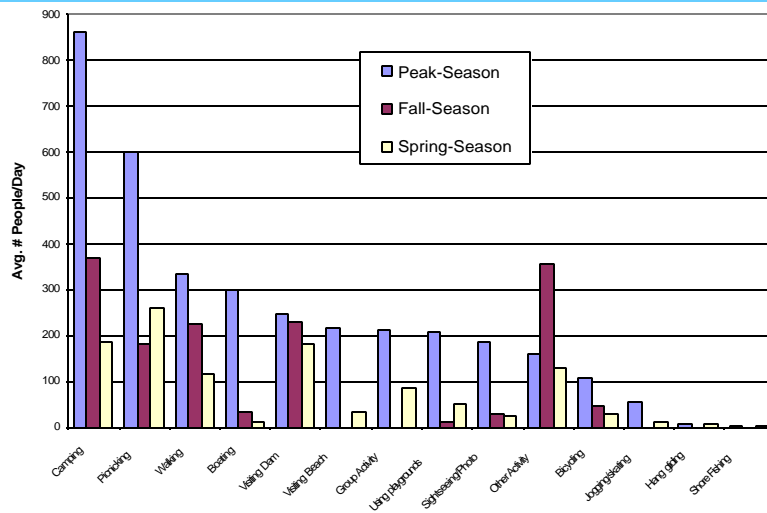
Recreation Use Assessment Peak Utilization (weekend/weekday)



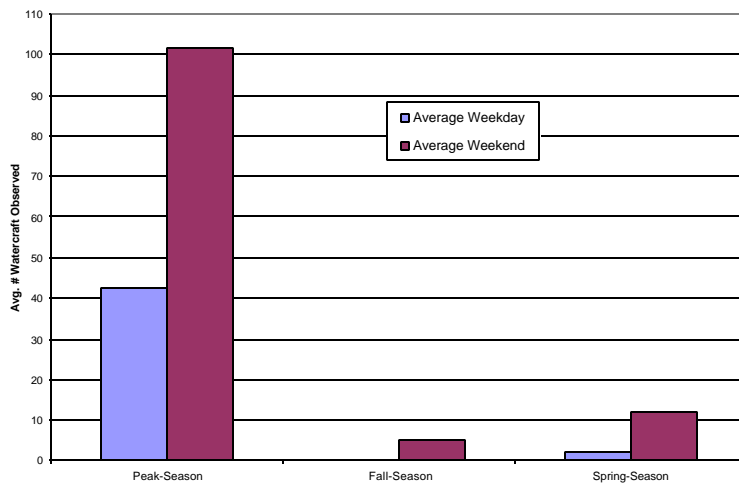
Recreation Use Assessment Site Utilization Seasonal Average



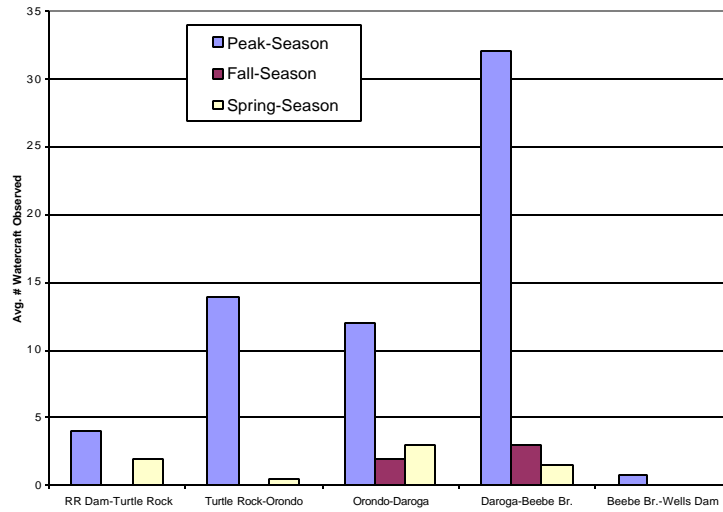
Recreation Use Assessment Activities at Recreation Sites



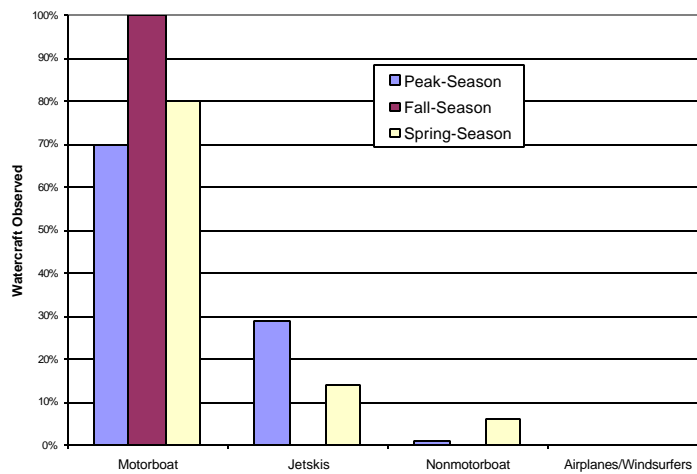
Recreation Use Assessment Seasonal Watercraft Use



Recreation Use Assessment Watercraft Distribution



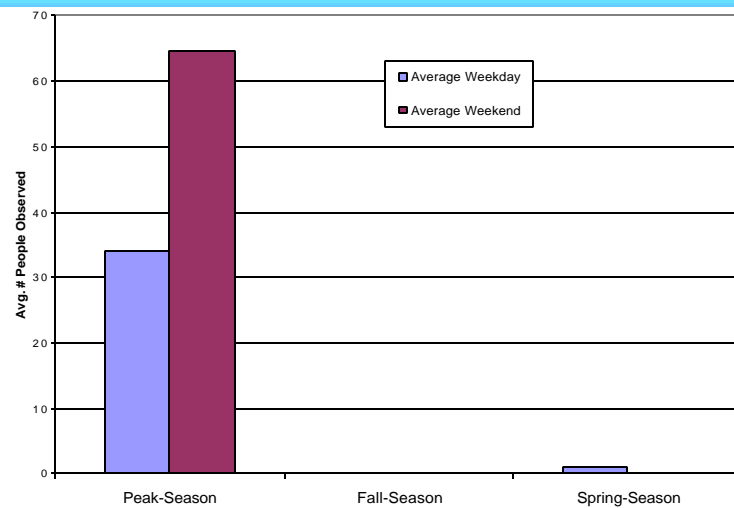
Recreation Use Assessment Watercraft Type



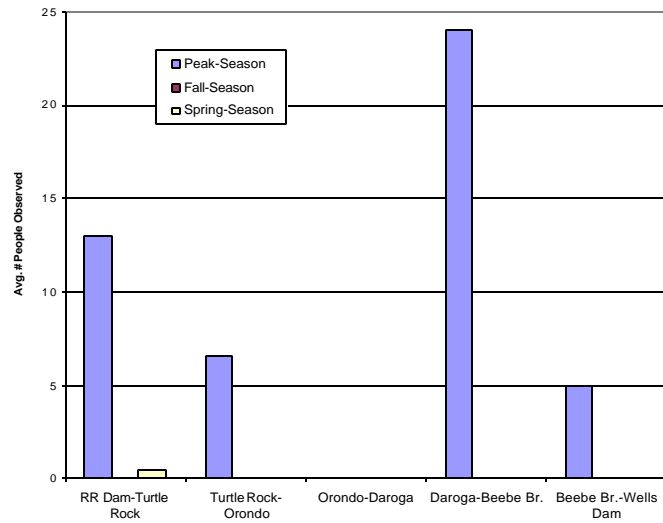
Recreation Use Assessment Watercraft Angling Observations

- Peak-Season - average 5%
- Fall-Season - average 40%
- Spring season - 0%
- Creel Survey - total 45 days
 - 71 interviews/134 anglers (2/WE, 4/WE)
 - Largest %: Chelan River - Entiat River
 - Primary target species-Walleye, smallmouth bass, pikeminnow,
 - CPUE low - highest for pikeminnow then walleye

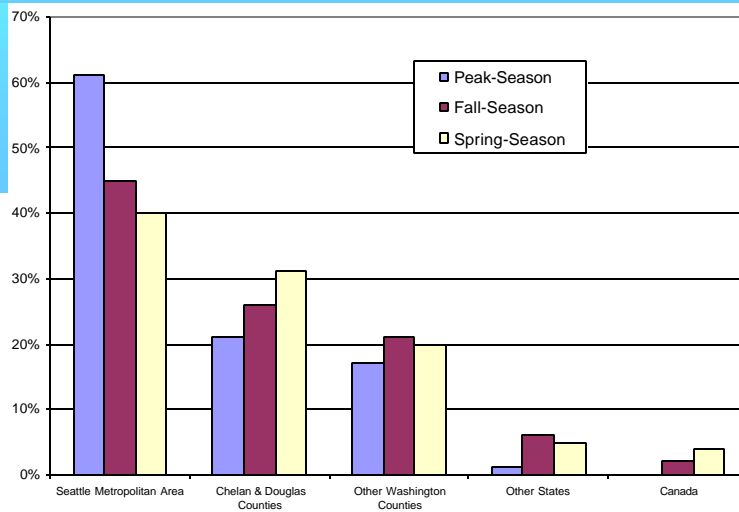
Recreation Use Assessment Seasonal Dispersed Shoreline Use



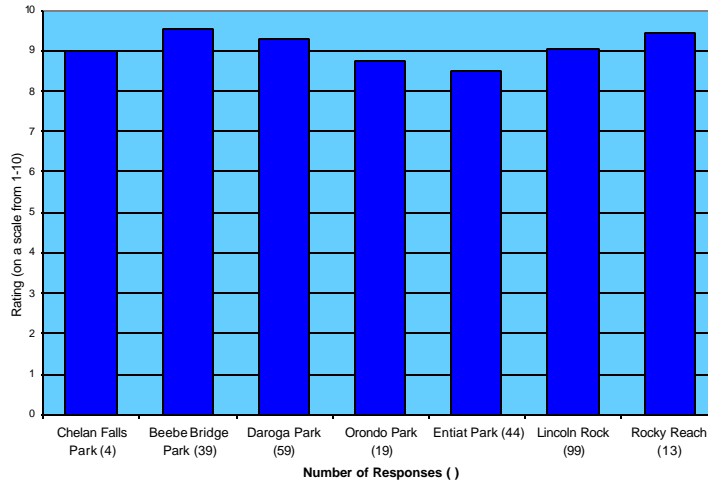
Recreation Use Assessment Dispersed Shoreline Use-Distribution



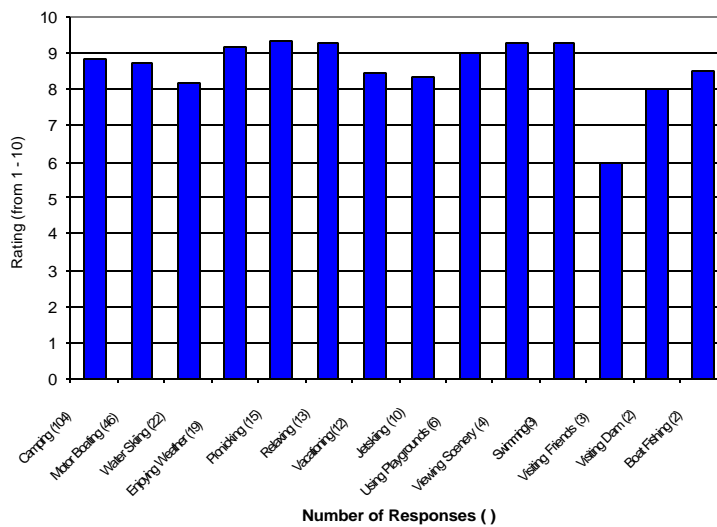
Recreation Use Assessment Visitor Demographics



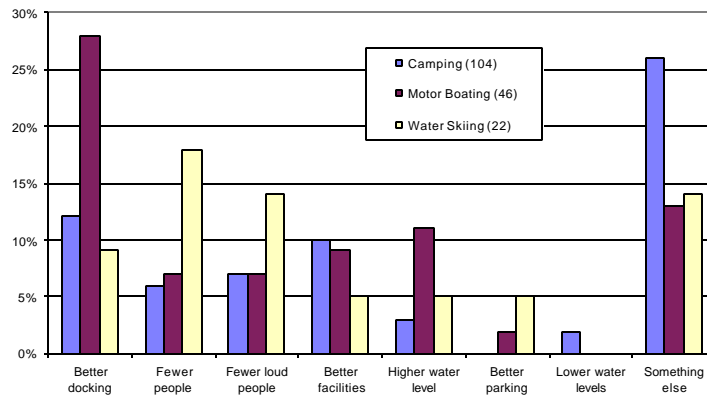
Recreation Use Assessment Visitor Satisfaction - Sites



Recreation Use Assessment Visitor Satisfaction - Primary Activities



1999 Monitoring Primary Activity Comments



Recreation Use Assessment Additional Info. from Surveys

- Average spent/person/day = \$15.00
- Overnight - Average 4.7 nights
- Day Users - Average 4.7 hours
- Visitors have been coming to Project Area an average of 7.9 years
- Visit Project Area average of 3.6 times/year.

Recreation Use Assessment

Displaced Use (Project Recreation Sites)

- **6% of overnight visitors interviewed at Project Recreation Sites displaced**
 - 62% (3.7% overnight visitors) displaced from recreation sites outside Project area to Project area recreation sites
 - 37.5% (2.3% overnight visitors) were displaced from Project area recreation sites (Lincoln Rock State Park, Daroga State Park, Beebe Bridge State Park)
 - 83% (2% overnight visitors) to Project area sites
 - 16% (.3% overnight visitors) went to other areas
 - None went to USFS Campgrounds

Recreation Use Assessment

Displaced Use (Entiat Park Survey)

- **3.8% of overnight visitors displaced (all displaced stayed at Entiat Park)**
 - 55% (2.2% overnight visitors) were displaced from Project area recreation sites
 - 11% (.4% overnight visitors) were displaced from USFS Campgrounds
 - 34% (1.4% overnight visitors) were displaced from other recreation sites outside Project area
- **<1% overnight visitors were staying at USFS Campgrounds**
 - Not participating in boating activity

Recreation Use Assessment Displaced Use (USFS CG Surveys)

- **15% of overnight visitors displaced (all stayed at USFS Campgrounds)**
 - 67% (10% overnight visitors) were displaced from other USFS Campgrounds
 - 22% (3.3% overnight visitors) were displaced from sites outside the Project area
 - 11% (1.7% overnight visitors) were displaced from Project area recreation sites

Seasonal Facility Capacity threshold Level Definitions

- **40 percent - "Optimal Use"** - Allows a facility or use area to rest and revegetate during slow periods or periods of closure. Peak capacity is typically reached during summer holiday weekends and during a few summer weekends. This level of use is optimal for many older facilities and those in sensitive resource areas. Newer facilities may accommodate higher percentages of use due to the incorporation of sensitive design features and siting.
- **60 percent - "Well Utilized"** - Indicates a well utilized facility or use area which reaches capacity during summer holidays, most summer weekends, and a few summer weekdays. A newer well-designed facility should function satisfactorily at this level of use, if allowed to rest during the off-season. An older facility will likely not be able to accommodate this level of use without significant impact or degradation of the user experience. Many visitors will perceive some crowding; however, off-peak periods are still available for those visitors who desire more solitude. Some impacts may be expected and will likely need to be addressed

Seasonal Facility Capacity threshold Level Definitions

- **80 percent - “Heavily Utilized”** - Indicates a very high level of use with capacity reached or exceeded during all summer weekends, many summer weekdays, and all summer holidays. The visitor experience is more urban with fewer opportunities for solitude. Many more visitors will perceive some crowding and many will likely go elsewhere. Sustained use at this level requires hardened or paved facilities, increased levels of management and crowd control, a full reservation system, and a more aggressive monitoring program. Impacts and maintenance levels increase substantially at this higher level.
- **100 percent - “Extreme Use”** - Indicates an extreme use level with facilities always at or above capacity, even during weekdays. The visitor experience becomes much more urban in nature with little or no opportunities for solitude. Most visitors will perceive crowding and many will likely go elsewhere. Sustained use at this level requires more hardened or paved facilities, increased levels of management, full reservations, and increased levels of monitoring and crowd control. Impacts and maintenance levels likely increase substantially at this higher level.