



# *Recreation Use Assessment 1999 Monitoring Summary*

---

Rocky Reach Hydroelectric Project  
Working Group Meeting  
June 5, 2000



# *Recreation Use Assessment Monitoring Sites and Seasons*

---

## ■ *Public Recreation Sites*

- *Chelan Falls Park*
- *Beebe Bridge Park*
- *Daroga State Park*
- *Orondo River Park*
- *Entiat Park*
- *Lincoln Rock State Park*
- *Rocky Reach Dam*

## ■ *Monitoring Seasons*

- *Peak-Season (Memorial Day weekend - Labor Day week)*
- *Fall-Season (mid-September - end of October)*
- *Spring-Season (early April - before Memorial Day weekend)*

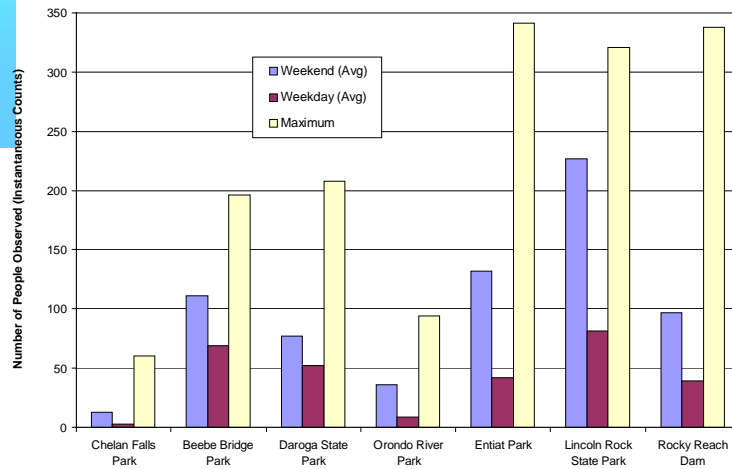
## *Recreation Use Assessment Field Monitoring Methodologies*

- **Observational Counts by Car (# people, activities, license plate #s, vehicles w/trailers)**
  - > Peak-Season (1999) - 16 Car Runs
  - > Fall-Season (1999) - 6 car runs
  - > Spring-Season (2000) 6 car runs
- **Surveys (activities, demographics, length of stay, likes, dislikes, attitudes, displaced use)**
  - > Peak-Season (1999) - 8 On-Site Survey Days at each site
  - > Peak-Season (2000) - Entiat Boat Launch and USFS Sites
- **Boat Runs (# of watercraft, # people along undeveloped shorelines)**
  - > Peak-Season (2000) - 8 boat runs
  - > Fall-Season (1999) - 2 boat runs
  - > Spring-Season (2000) - 2 boat runs

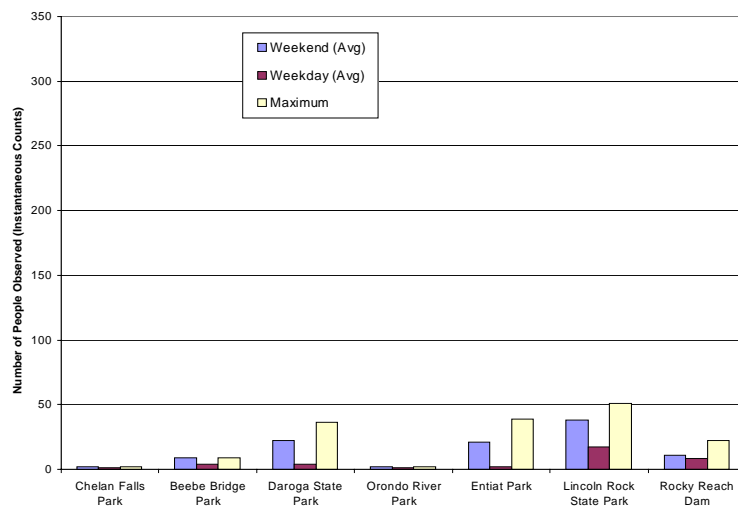
## *1999 Monitoring Preliminary Results*

- *Distribution of Use*
- *Use Estimates*
- *Occupancy Levels*
- *Visitor Demographics*
- *Visitor Satisfaction*
- *Visitor Spending*
- *Length of Stay*
- *How Often People Visit*
- *Results of Fall 1999 Boat Runs*

## 1999 Monitoring Distribution of Use, Peak-Season



## 1999 Monitoring Distribution of Use, Fall-Season



# Recreation Use Assessment

## Estimating Recreation Use

### Day-Use Estimates

#### Day-Use

- Car Run Observations
  - Counts of people
  - turnover rate - 2
- Traffic counter data

#### Boat Launches

- Vehicle w/Trailer counts
  - turnover rate = 2
  - avg. 3 people/car
- Traffic counter data

### Overnight Estimates

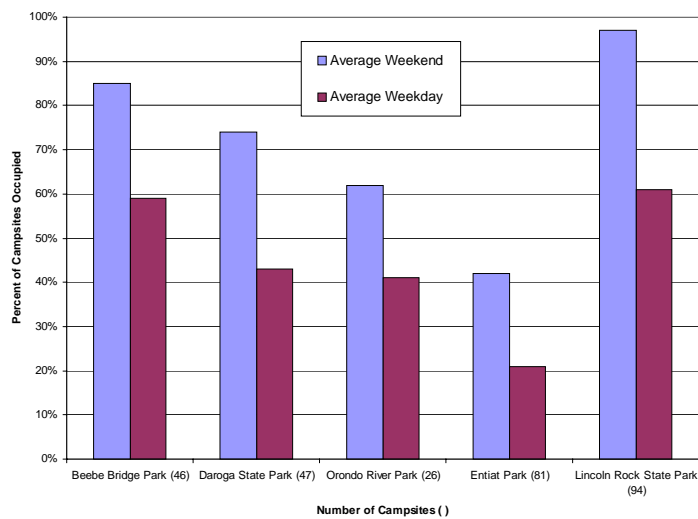
#### Daily Fee Receipts

#### Observations

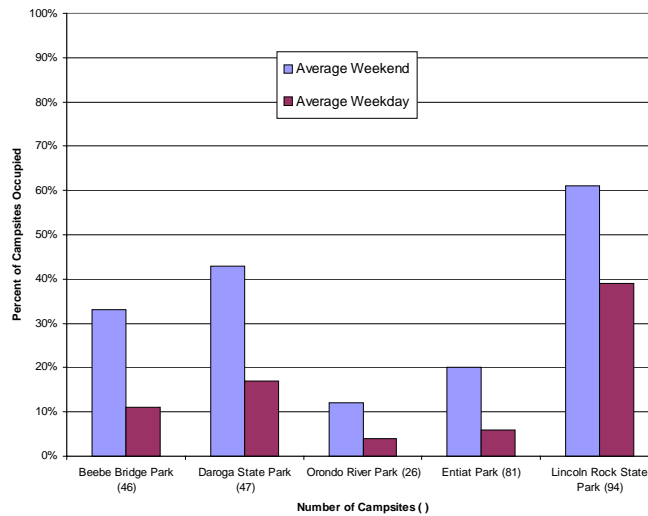
- Counts of occupied campsites

# 1999 Monitoring

## Peak-Season Campground Occupancy Levels

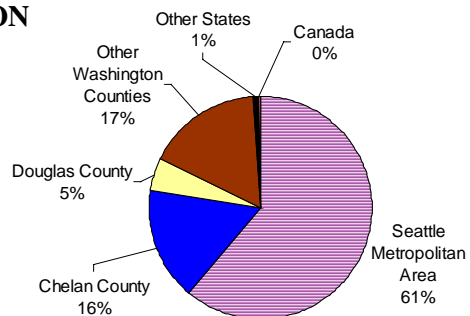


## 1999 Monitoring Fall-Season Campground Occupancy Levels



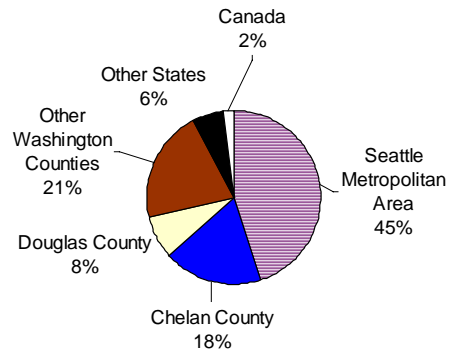
## 1999 Monitoring Where Visitors are From

### PEAK-SEASON

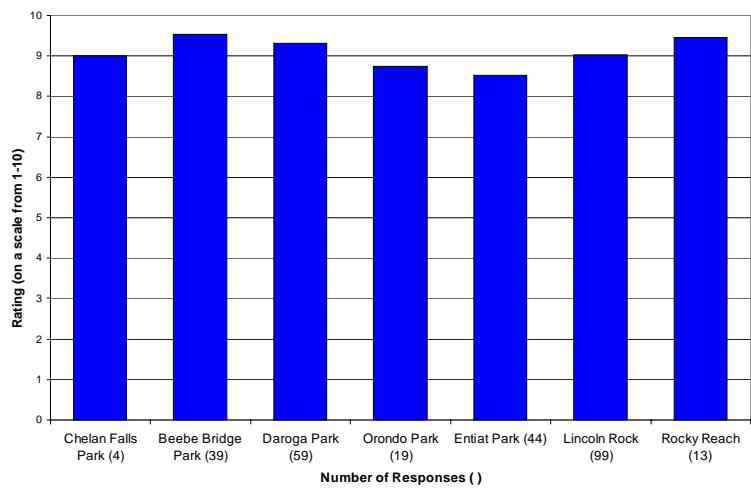


# 1999 Monitoring Where Visitors are From

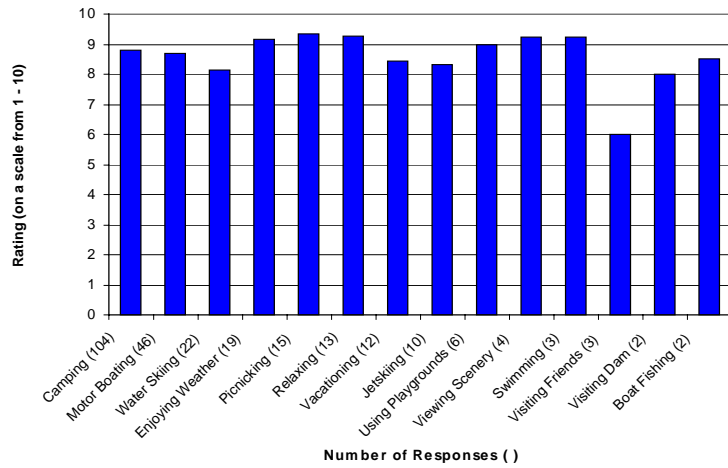
FALL-SEASON



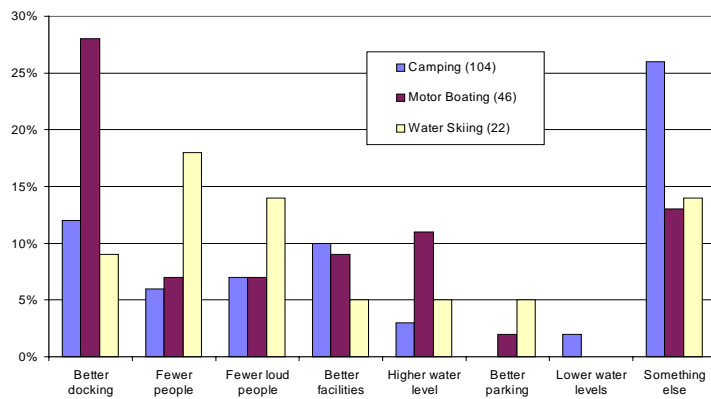
# 1999 Monitoring Recreation Site Rating



## 1999 Monitoring Primary Activity Rating



## 1999 Monitoring Primary Activity Comments



## 1999 Monitoring Additional Info. from Surveys

- Average spent/person/day = \$15.00
- Average 4.7 nights (88% overnight)
- Average 4.7 hours (12% day users)
- Visitors have been coming to Project Area an average of 7.9 years
- Visit Project Area average of 3.6 times/year.

## 1999 Monitoring Fall-Season Boat Runs

