

Stehekin Powerhouse



Introduction

- History
- Water Rights
- Maintenance Costs
- Turbine Runner Repairs
- Stehekin Feasibility Report

Stehekin Powerhouse



Powerhouse History

- 1963 Peterson Sawmill
- 1967 District builds Powerhouse
District Installs first diesel generator
- 1975 D1 installed
- 1982 D2 installed
- 1987 D4 installed
Powerhouse enlarged
Switchgear installed
- 2005 Replaced all governors and voltage regulators
Add capability to use any diesel as peak unit
Peaking diesel generator replaced

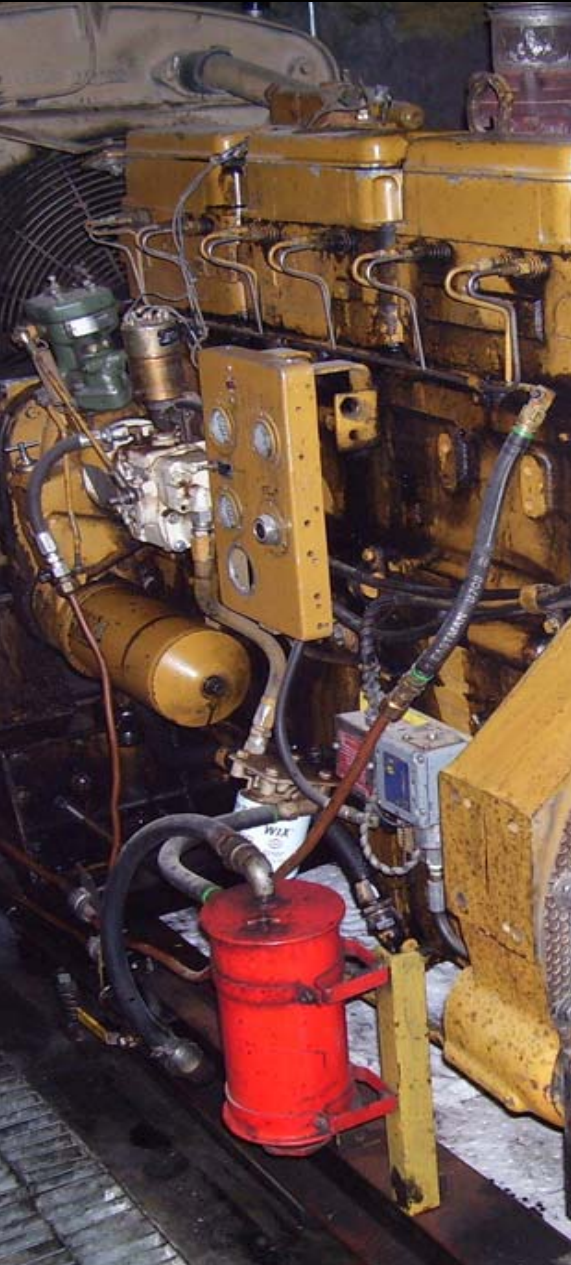
Stehekin Powerhouse



Water Rights

- 17.8 cfs currently
- 2003 installed flow meters
- New water rights application of additional 5.0 cfs

Stehekin Powerhouse



Maintenance Costs

- Annual Cost Increase
 - Obsolete Equipment
 - Frequent Maintenance Requirements
 - Remote Location
- Management Philosophy
 - Past . . .
 - Present . . .

Stehekin Powerhouse



Turbine Runner Repair

- 2004 Hydro runner crack detected
Repaired in place
- 2005 Crack reappeared
Repaired in CM Shop with
modified procedure
- 2006 Crack reappeared
Repaired in CM Shop with
extensive excavation
- Current Routine inspections ongoing

Stehekin Powerhouse



Feasibility Report

- Wind
- Solar
- Fuel cell
- Micro hydro
- Conservation
- Load management

- Next steps . . .