

Chelan County PUD *Utility Services*



CHELAN COUNTY

Water Wastewater & Electrical New Service Cost

January 22nd, 2007

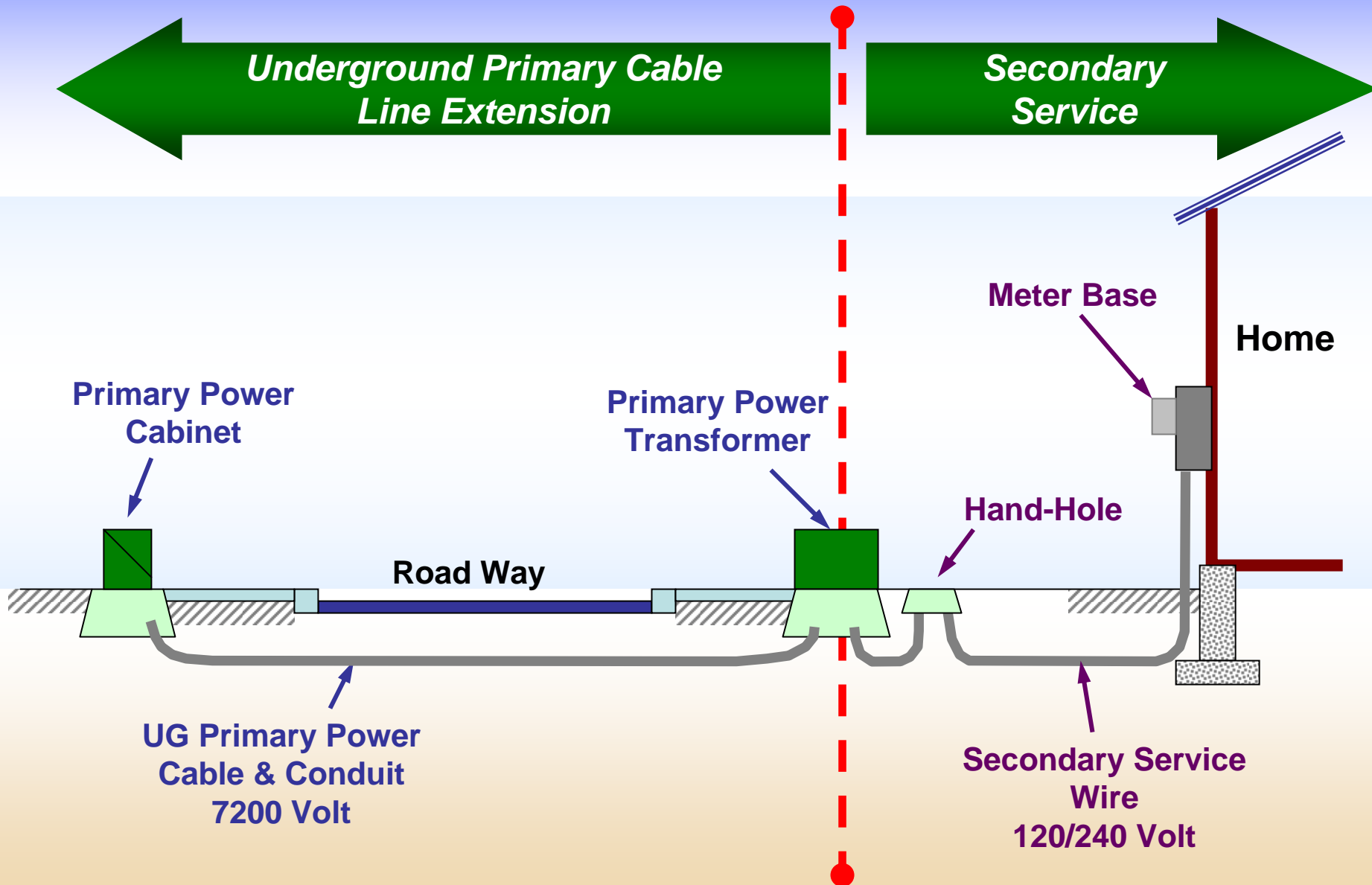
Discussion Points

- ✓ **Overview - NEW Electrical & Water services**
- ✓ **Costs & Fees - NEW Electrical & Water services**
- ✓ **Fee adjustments - based on Actual costs to the District**
- ✓ **Recommendations to consider**

Connection Fee History

- ❑ Implemented in 1994**
- ❑ County was experiencing rapid growth**
- ❑ Fees helped minimize future rate increases**
- ❑ Revenue is typically around 3% of retail sales**

Profile: Typical UG Residential Service



Electrical Line Extension Costs



▪ **Line Extension –**

- Estimated labor, materials & tools based on current market values and current labor rates.
- Customer pays 100% of Line Extension Fees
- Customer/Owner Options; Rate Schedule #13
 - Trenching
 - Conduit Installation

Average LE Cost = Approx \$3,000 - \$6,000

Electrical Transformer & Meter Costs

Current Rates

- **120/240 Volt 1-phase** **\$4.10 per Amp**
- **120/208 Volt 3-phase** **\$7.10 per Amp**
- **480/277 Volt 3-phase** **\$14.20 per Amp**

Average home in Wenatchee = 200 Amp Service

200 Amps x \$4.10 Amp = \$820.00

80% of new service = 200 Amp

*** Exemption For Service fees (501-c3)**

- **Secondary Services Fees (Flat Fee)**
- **Transformer & Meter Fee**
- **120/240V Single Phase = \$4.10 per Ampere**
 - Residential 200 Amp/Svc = \$820.00

25KVA Pad Mounted Transformer Cost
 200 Amp Meter Cost

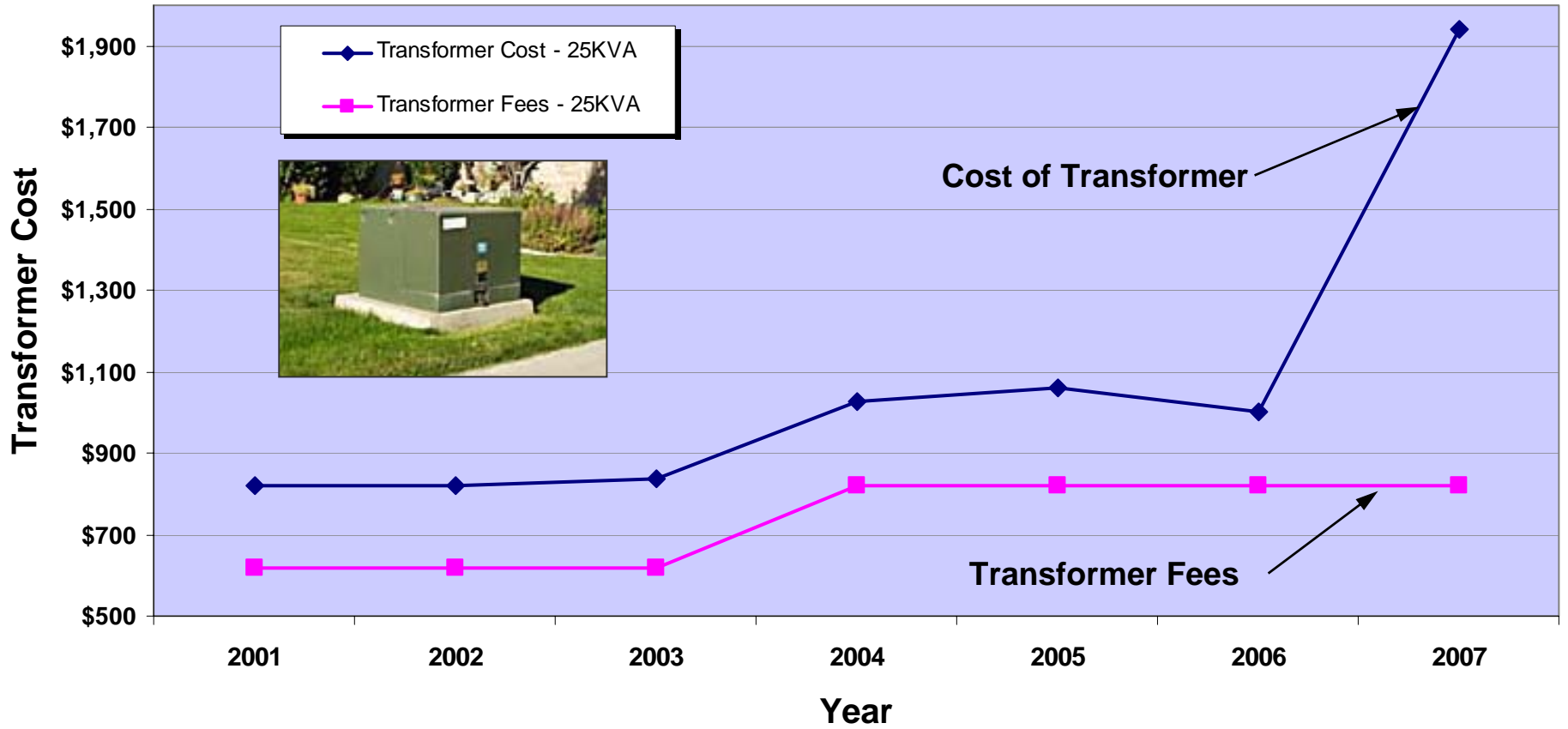
~~= \$820.00~~
~~= \$25.00~~
Total = \$862.00

= \$1900.00

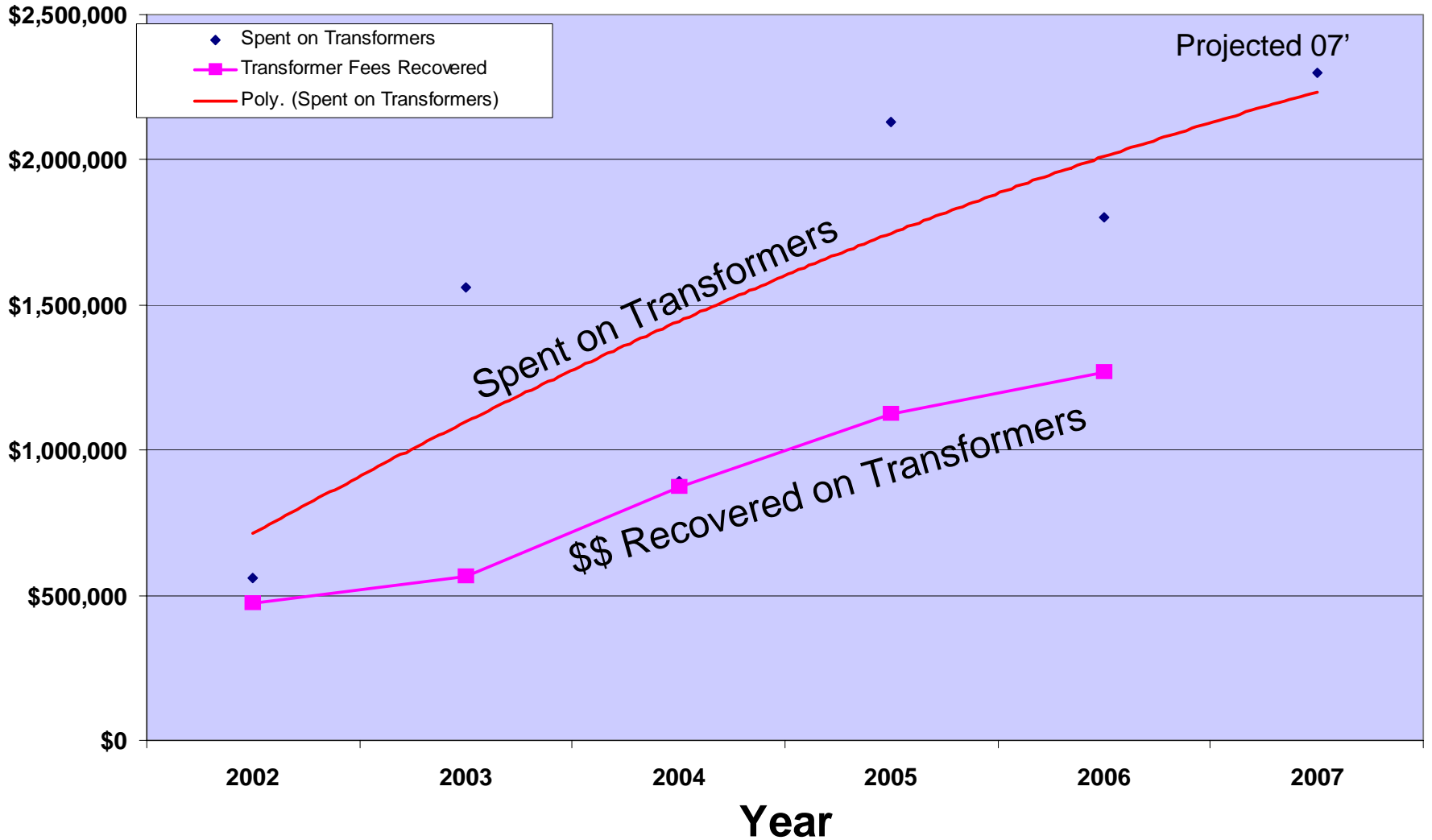
Equipment Costs For
 200 Amp Residential
 Service



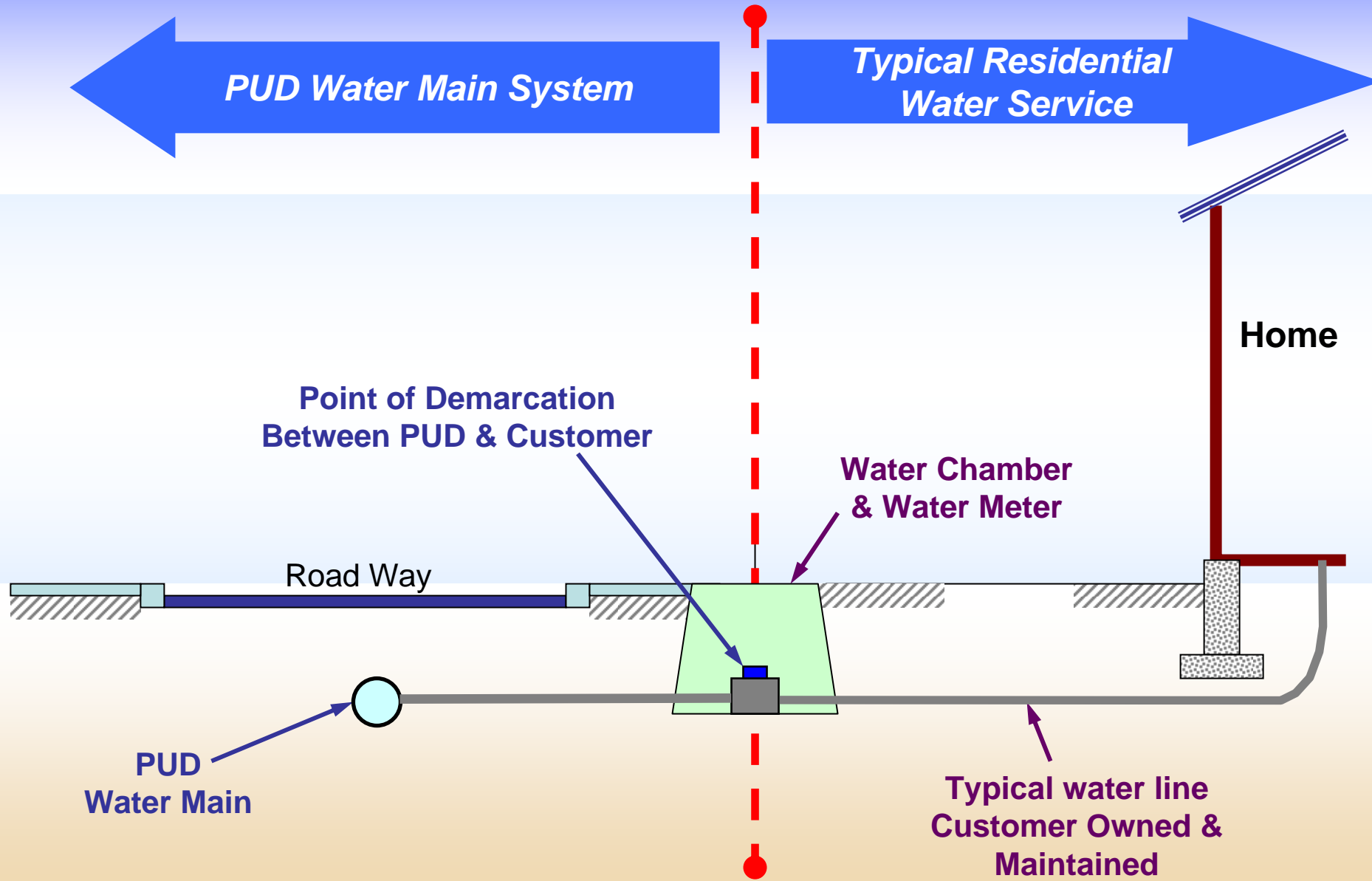
Typical Transformer Cost



Transformer Cost Recovery



Profile: Typical UG Water Residential Service



Water Line Extension Costs



■ Line Extension –

- The line extension process is defined in Rate Schedule 100
- Design and construction by applicant with District inspection and administration
- Applicant pays 100% of line extension fees. Fees last updated in 2003.

5/8" Meter Fee

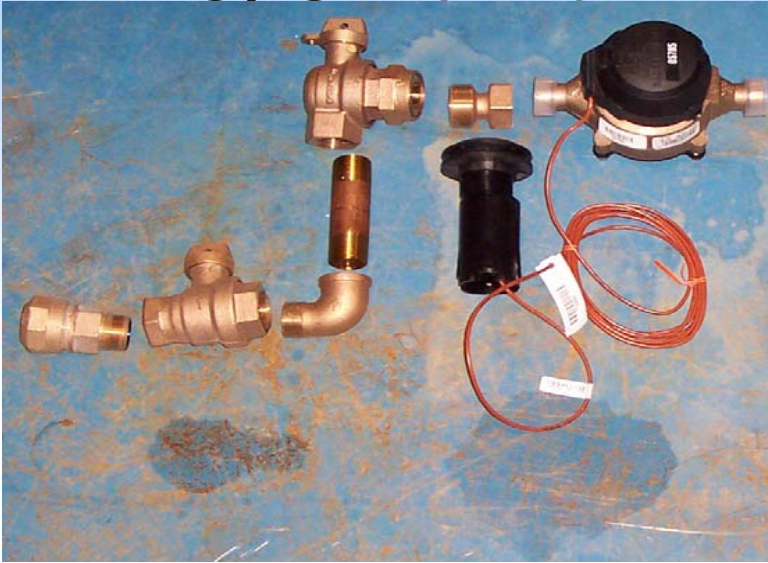


• Materials	\$245
• Install labor/equip	\$85
• Admin, small tools & equipment	\$30
TOTAL	\$360
Current fee	\$200
Non Recovered Cost	(\$160)

2006 meter fee

Non Recovered Costs (\$29,300)

5/8" and 1" Water Chamber



- Materials \$775
- Install labor/equip. \$640
- Traffic control \$240
- Paving repair \$525
- Admin, small tools & equipment \$215

TOTAL \$2,395

Current fee **\$1,332**

Non Recovered Cost **(\$1,063)**

2006 chamber fee

Non Recovered Cost **(\$7,400)**

Wastewater STEP Tank

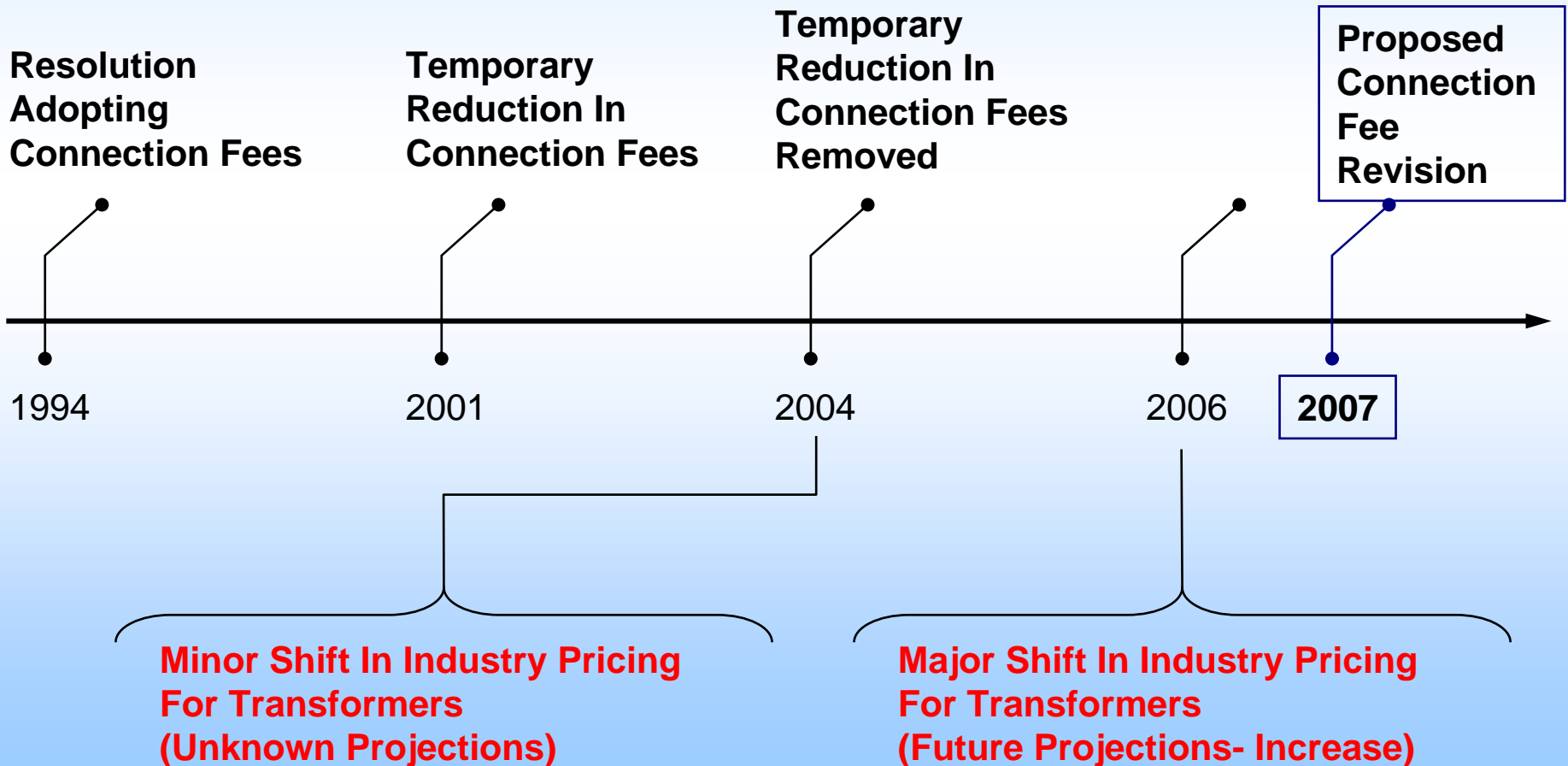


• Materials	\$4,400
• District labor/equip.	\$400
• Contract installation	\$6,500
• Admin, small tools & equipment	\$500
• Treatment capacity	\$4,400
TOTAL	\$16,200
Current fee	\$14,000
Non Recovered Cost	(\$2,200)
2006 STEP tank	
Non Recovered Cost	(\$8,800)

Projected Impacts of Revising Fees

Service Fee	Estimated 2007 Activity	Estimated Annual Impact
Electric Meter & transformer	800 new services	\$ 560,000
Water meter & vault fees	180 new services	\$ 40,000
Wastewater step tank fees	4 new services	\$ 4,000
Total		\$ 604,000

Timeline of Revising Fees



Recommendation:

- ✓ **Adjust Transformer & Meter Fees To Actual Costs.**
- ✓ **Adjust Chamber & Meter Fees To Actual Costs.**
- ✓ **Adjust Wastewater STEP Tank Fees To Actual Costs.**
- ✓ **Adjust water/wastewater line extension fees**
- ✓ **Evaluate Cost Index Options For “Annual Adjustment”.**

Suggested Next Steps:

Finalize recommended revised fees

Meet with the local building association

Schedule (3) informational meetings & hearing date

If approved implement during spring 2007

Questions ?