




# Entiat Valley 115kV Upgrade

*March 5, 2007*



CHELAN COUNTY  
**POWER**

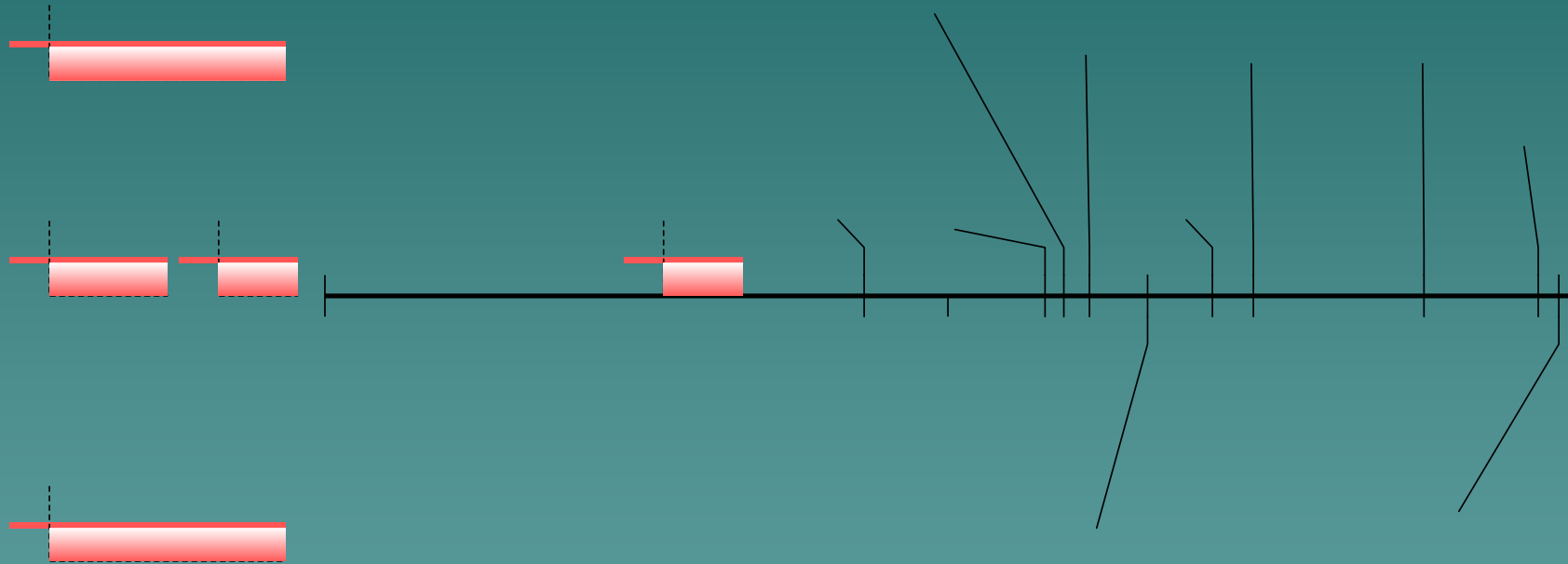
# AGENDA

- ◆ Reliability and Capacity Issues
  - ◆ Alternative Approaches
  - ◆ Customer Involvement
  - ◆ Environmental & Permitting Considerations
  - ◆ Next Steps
- 
- A stylized, layered mountain range graphic in shades of teal, located in the bottom right corner of the slide.

# RISK CAPITAL ANALYSIS

## Entiat Valley 115kV Transmission Program

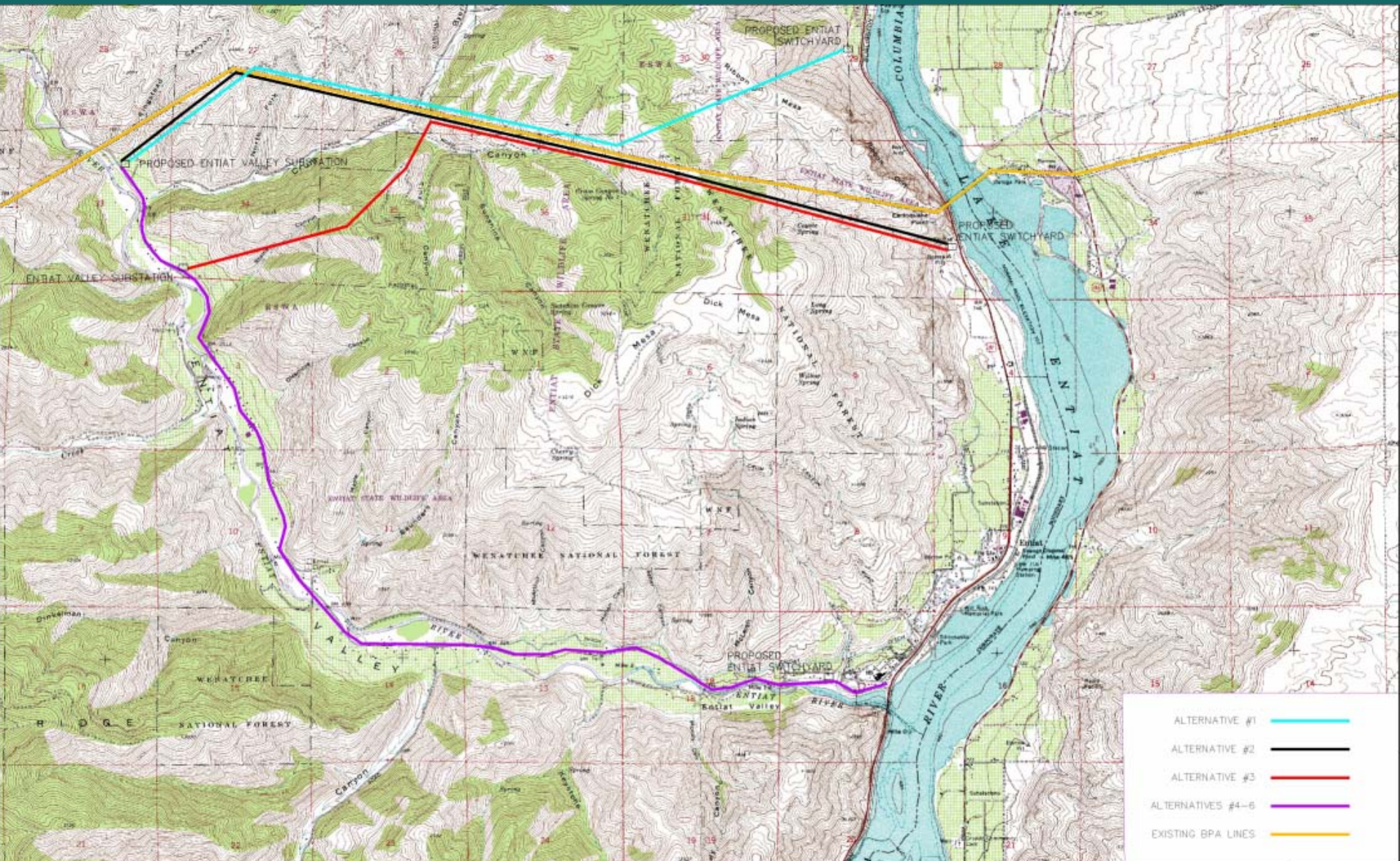
as of 3-2-07



# Proposed Schedule

- ◆ 2007 Begin Permitting Process (anticipate permit by April 2008)
- ◆ 2007 Design Completion (August)
- ◆ 2007 Begin Material Procurement
- ◆ 2008 Begin 115kV Line Construction (May)
- ◆ 2008 Begin Substation Design/Procurement
- ◆ 2009 Construct Substation
- ◆ 2009 Energize 115kV System
- ◆ 2010 Construct Switchyard

# Original Alternatives



ALTERNATIVE #1	
ALTERNATIVE #2	
ALTERNATIVE #3	
ALTERNATIVES #4-6	
EXISTING BPA LINES	



PREP. ENG.	CHIEF PROJECT
END ENG.	PRIN. ENG.
DESIGNER	2ND ENG.
APPROVAL	PROJ. MGR.

SCALE	1" = 3000'
REV. DATE	

SCALE	GRAPHIC SCALE
0	1"

**PUBLIC UTILITY DISTRICT NO. 1  
OF CHELAN COUNTY**



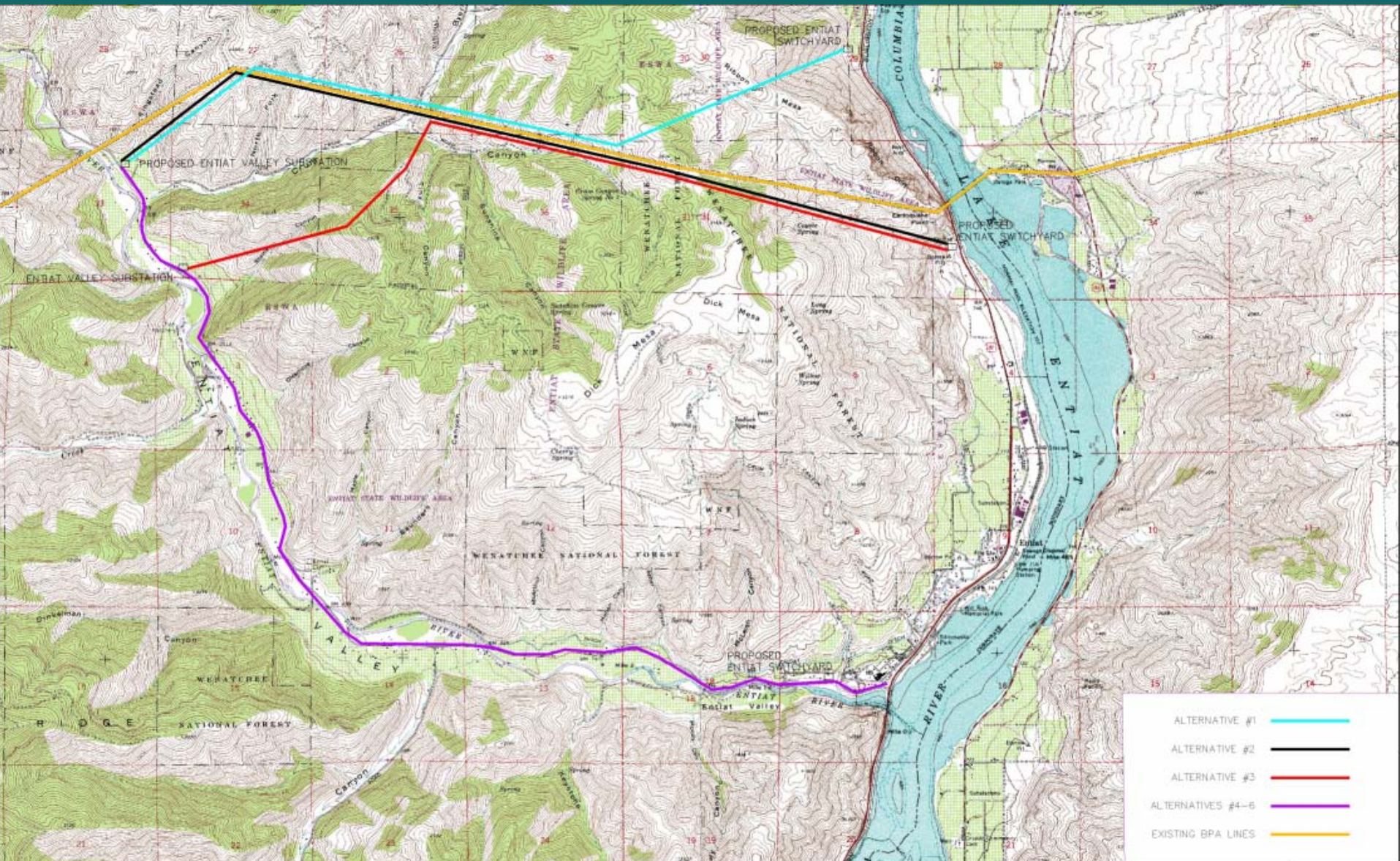
ENTIAT VALLEY 115KV ALTERNATIVES

SHEET	OF
REVISION	
DATE	
DWG. MAP	

# Existing BPA Corridor



# Original Alternatives



ALTERNATIVE #1	
ALTERNATIVE #2	
ALTERNATIVE #3	
ALTERNATIVES #4-6	
EXISTING BPA LINES	



PREP. ENG.	CHIEF PROJECT	SCALE	MAP IS 20% A-SH ON ORIGINAL DRAWING	VERIFY SCALE	IF NOT ONE BOX ON THE SHEET, VERIFY SCALE WORKING
END ENG.	PRIM. ENG.	1" = 3000'			
DESIGNER	2ND ENG.				
APPROVAL	PROJ. MGR.	REV. DATE	REVISION	REV. NO.	DATE

**PUBLIC UTILITY DISTRICT NO. 1  
OF CHELAN COUNTY**



ENTIAT VALLEY 115KV ALTERNATIVES

SHEET	OF
REVISION	
DATE	
DWG. MAP 1	

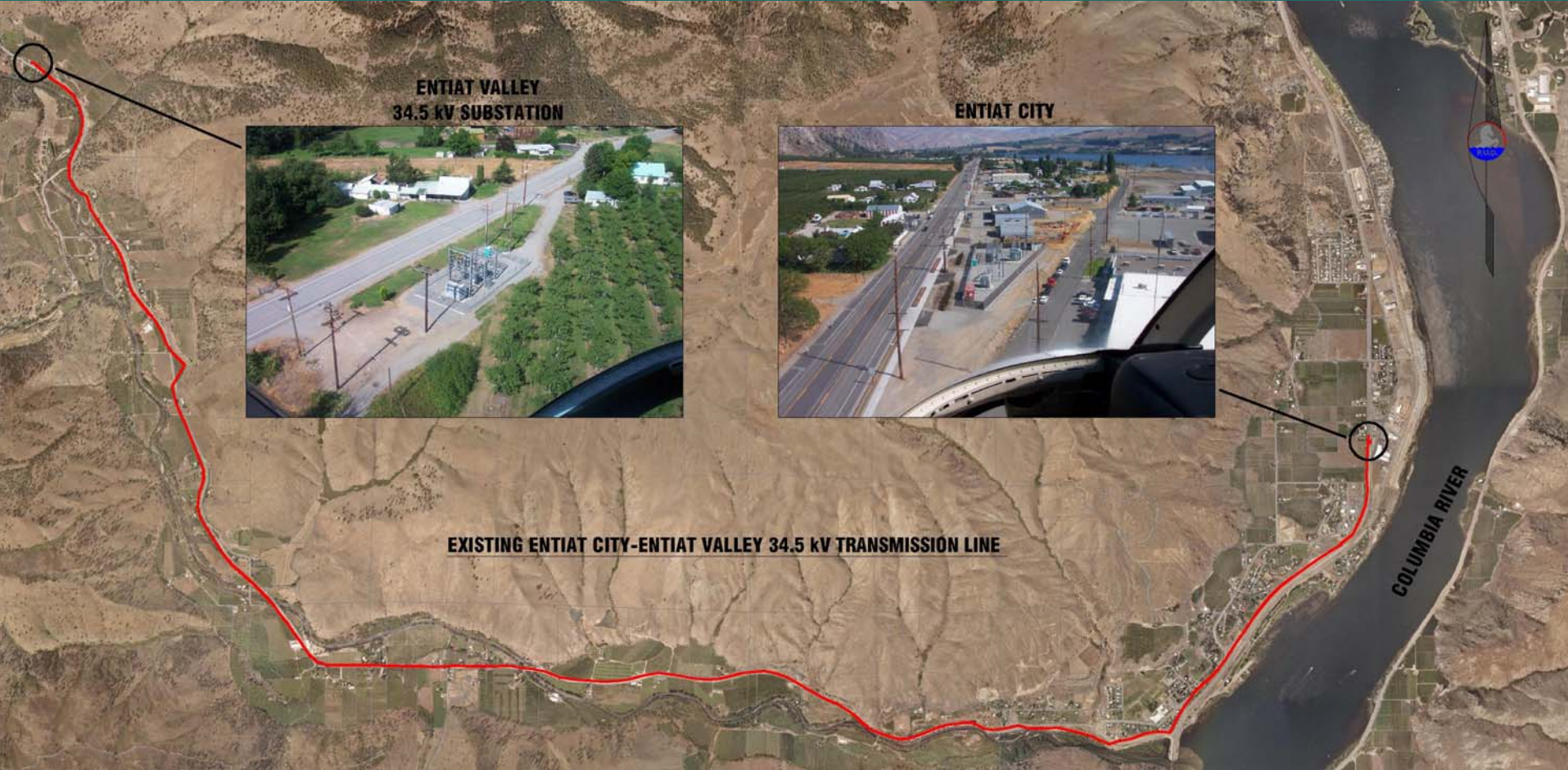
# Entiat Valley Road




← 34.5 kV Transmission Line

← Distribution Line

# Existing Facilities



# Entiat Valley 115 kV Transmission Line Wildlife and Habitat Considerations

- Threatened and Endangered (T&E) Species
  - Land Owners
    - Public (Federal and State)
      - Management plans include a variety of sensitive species
    - Private
      - Sensitive species surveys not required
- 

# Potential Wildlife and Habitat Impacts

## North Route – Public

- T & E species
  - Bald Eagle
- Raptors
- Plants
- Invertebrates
- Existing Access Roads

## South Route – Private

- T & E species
  - Bald Eagles
  - Salmonids
  - Bull Trout
- Avian collision
- Riparian/Wetlands
- No Access Roads


# Wildlife and Habitat Summary

- Preliminary Information
  - North Route
    - Species of concern identified by agencies
    - Limited road construction
  - South Route
    - Limited sensitive species concern
    - Extensive road construction
    - Entiat River crossings
      - Riparian
- Moving Forward
  - Specific studies
    - Spring survey window – April-May 2007
  - Scoping process

# National Environmental Policy Act (NEPA)

- Required when Federal Lands Involved
- Federal Agency Leads Process
- NEPA Document Meets SEPA Requirements
- Defined Process and Step-wise Progression to Address Project Proposal

# NEPA Process

- Public Scoping; Input on Proposal
  - Review Comments, Develop Alternatives
  - Environmental Document Available for Public Comment
  - Comment Period
  - Decision Notice
  - Appeal Period
  - Time frame: 10 Months – 2+ years
- 

# Public Scoping

- Public Sector response to Project Proposal
- Comments Received Determine Environmental Analysis Process
  - Range of Alternatives
  - Environmental Assessment
  - Environmental Impact Statement