

OBJECTIVES

- Increase small gravel depositions in areas where past steelhead redds were observed but current gravel supply depleted
- Add suitable steelhead spawning gravel near hydraulic, boulder or log cover in areas where hydraulics look good but steelhead redds not observed and little or no small gravel present
- Increase number of suitable spawning locations in upstream sections 6, 5 and 4

STRATEGY

- Place sufficient gravel to create 4 inch depth over areas approximately 20 sq yds (6-7 cu yds per location)
- Place gravel where depths and velocities match previous redds ($D=1'-3'$, $V=1-3$ fps)
- Place gravel thicker at upstream part of each site since downstream movement is expected
- Placement sites are shown in following slides showing previous redd locations
- No sites in lower portion of Section 2 since this section has been accumulating small gravel
- Sites of gravel placement are marked with red oval

Chelan River Steelhead Redds

2011 - 2015



Reach 4 Habitat Channel Sections

REDDS IN SECTION 6



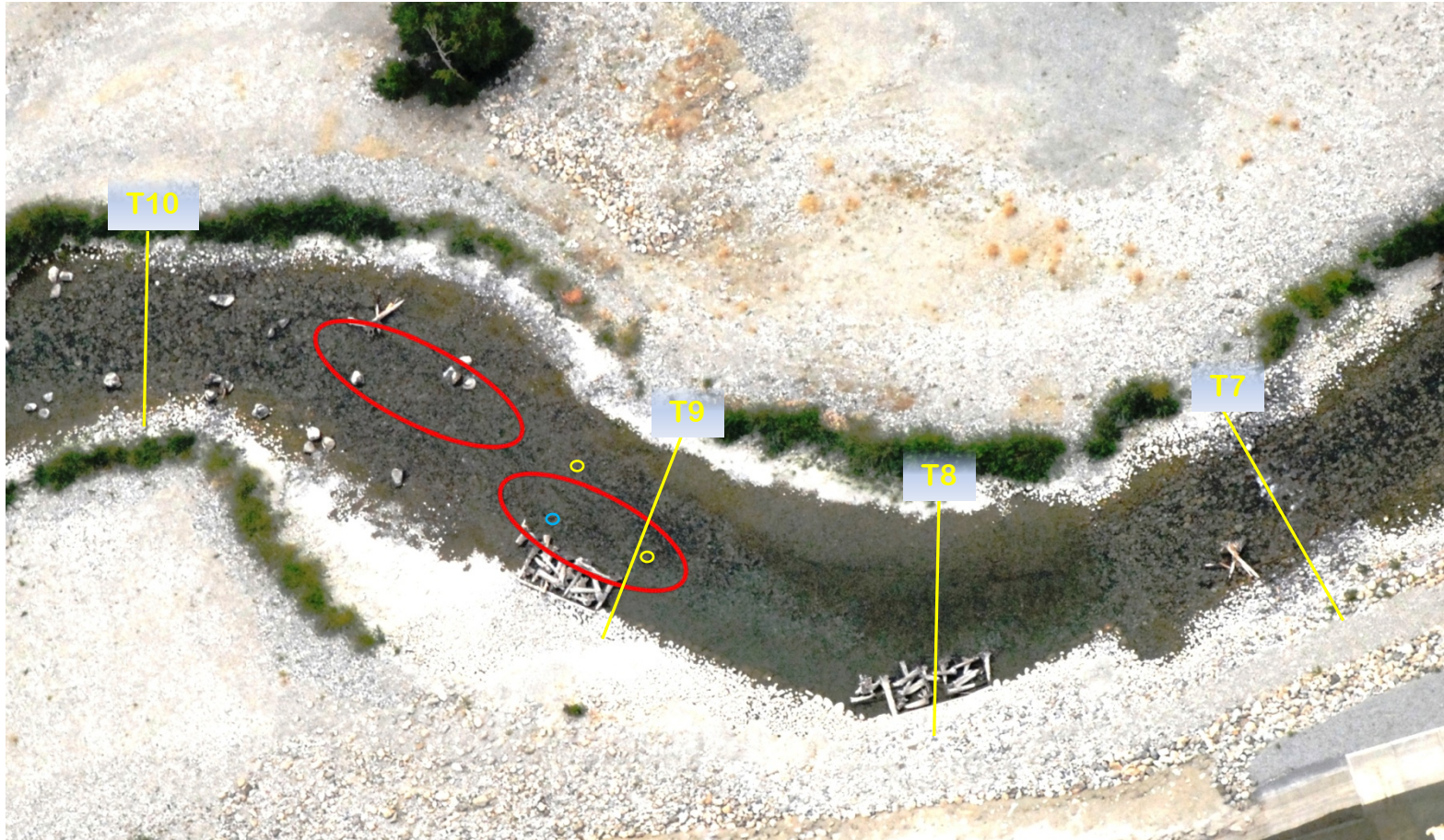
2011 ○ 2012 ○ 2013 ○ 2015 ○

REDDS IN SECTION 5



2011 ○ 2012 ○ 2013 ○ 2015 ○

REDDS IN SECTION 4



2011 ○ 2012 ○ 2013 ○ 2015 ○

REDDS IN SECTION 3



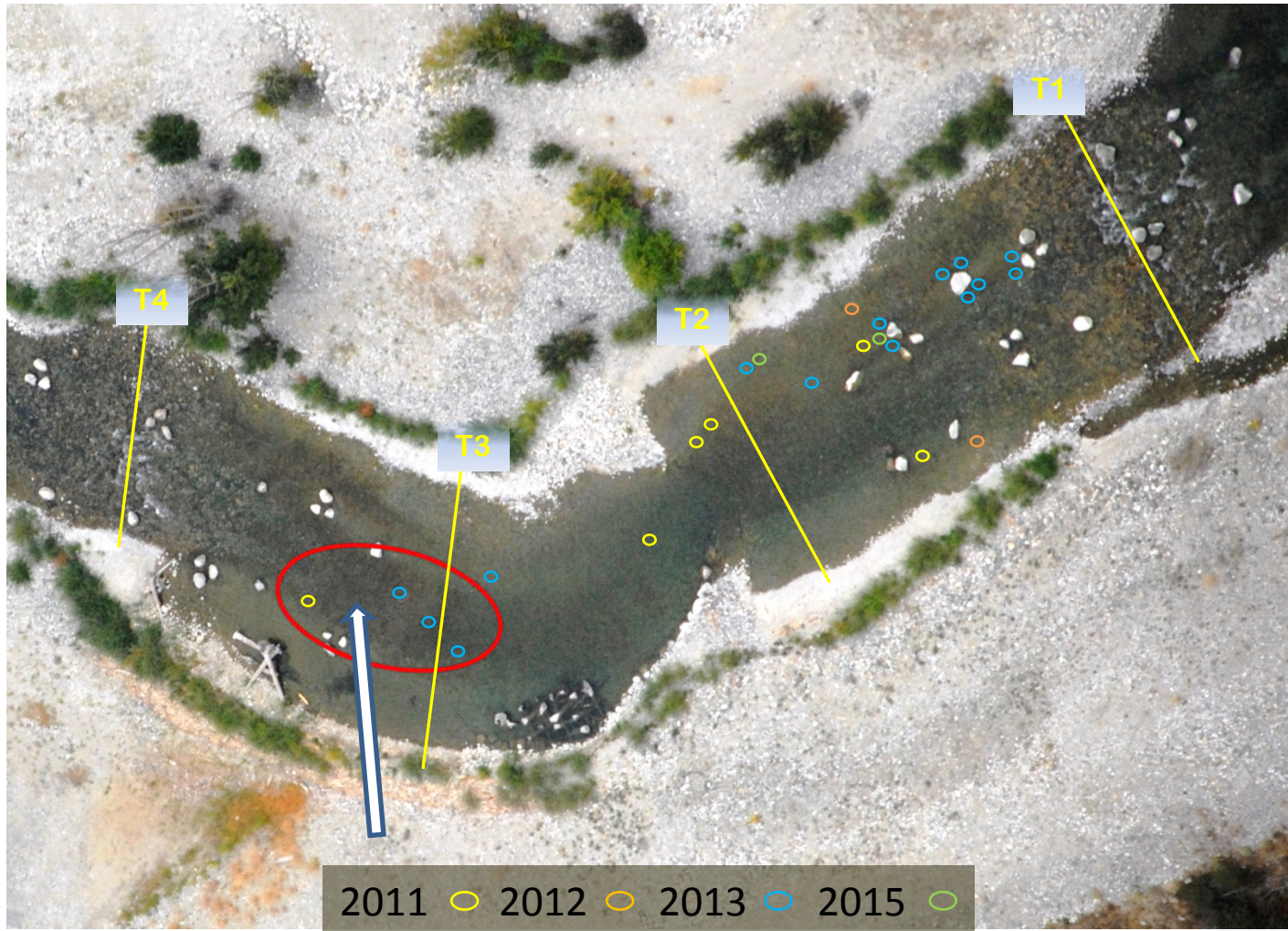
2011 ○ 2012 ○ 2013 ○ 2015 ○

REDDS IN SECTION 2



2011 ○ 2012 ○ 2013 ○ 2015 ○

REDDS IN SECTION 2



Areas of Disturbed Gravel, No Fish Observed, Not Counted as Redd →

REDDS IN SECTION 3

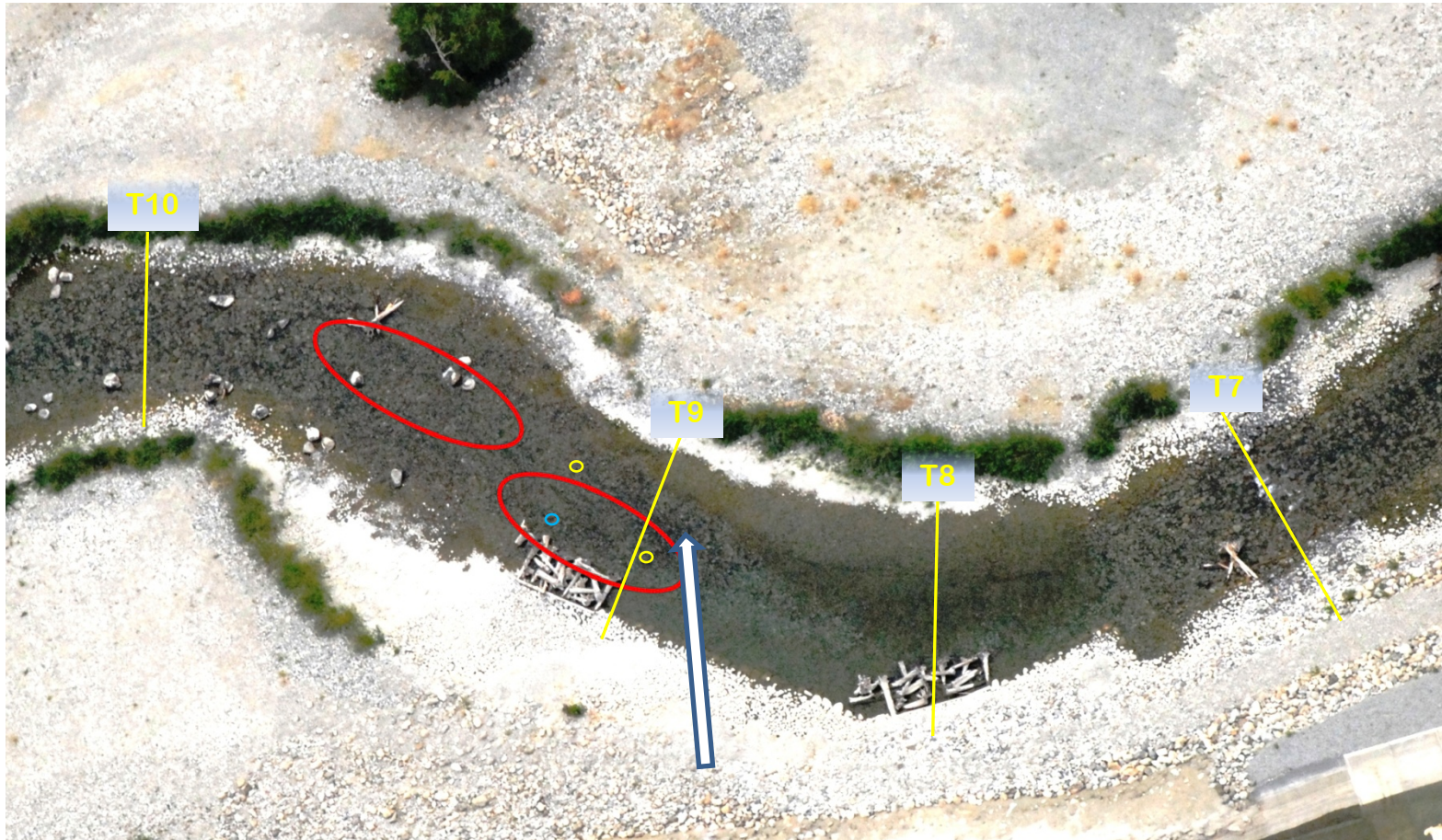


2011 ○ 2012 ○ 2013 ○ 2015 ○

Areas of Disturbed Gravel, No Fish
Observed, Not Counted as Redd



REDDS IN SECTION 4



2011 ○ 2012 ○ 2013 ○ 2015 ○

Areas of Disturbed Gravel, No Fish
Observed, Not Counted as Redd



REDDS IN SECTION 6



2011 ○ 2012 ○ 2013 ○ 2015 ○

Areas of Disturbed Gravel, No Fish Observed, Not Counted as Redd →