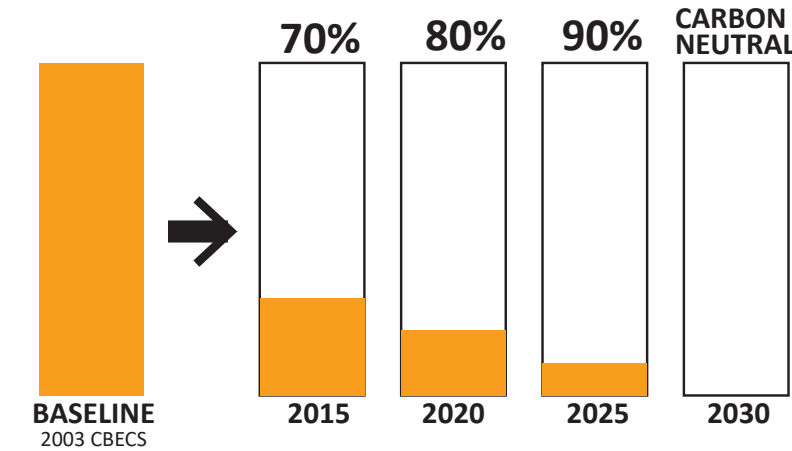


The best, for the most, for the longest



CHELAN COUNTY

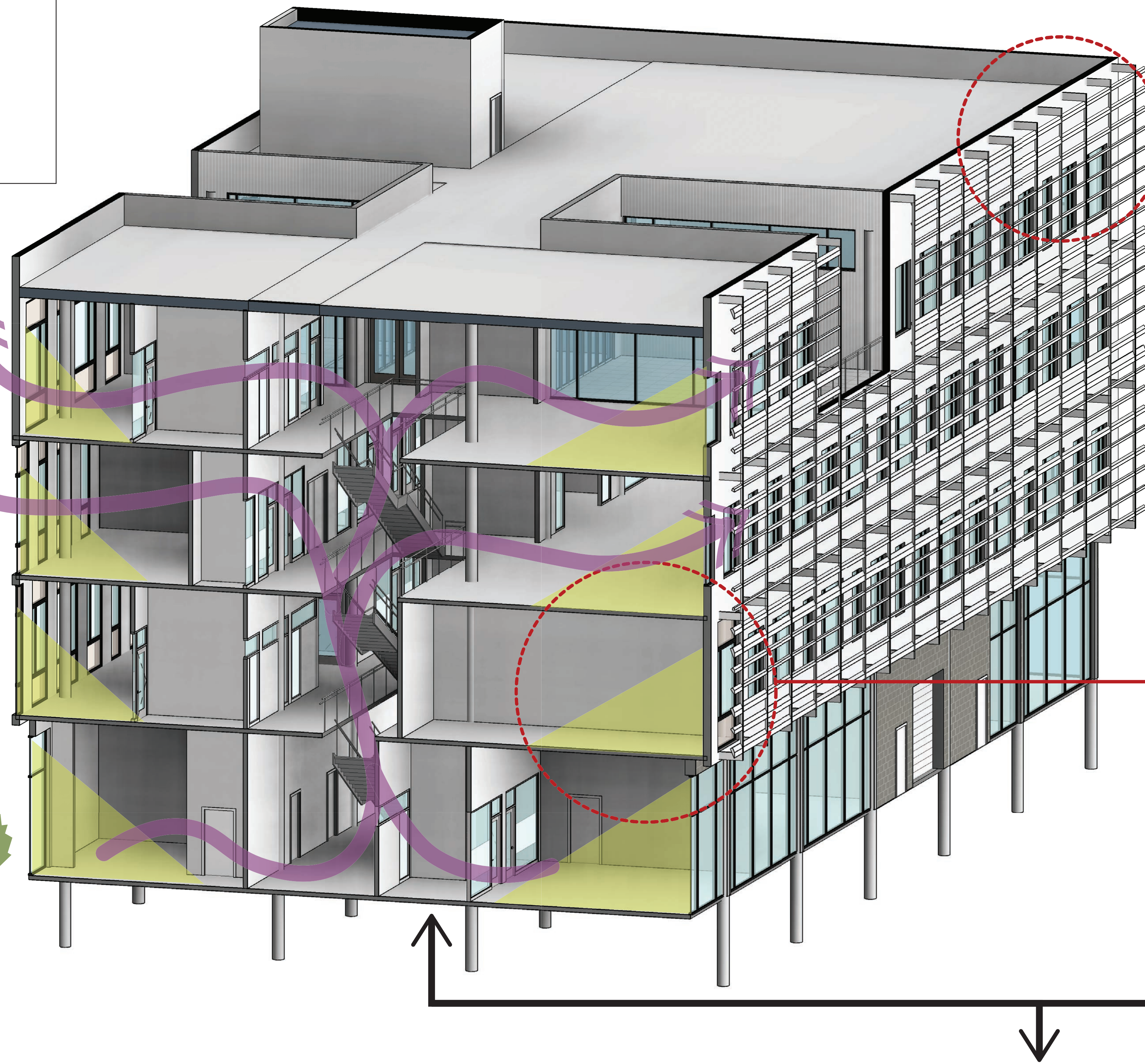
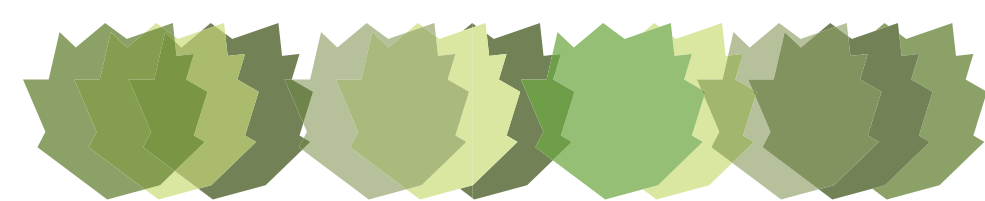
2030 CHALLENGE
An incremental system of reducing greenhouse gas emissions from buildings through the use of efficient energy practices and renewable energy sources, targeting **Net Zero** by the year 2030.



ENERGY USE TARGETS BASED ON YEAR OF DESIGN

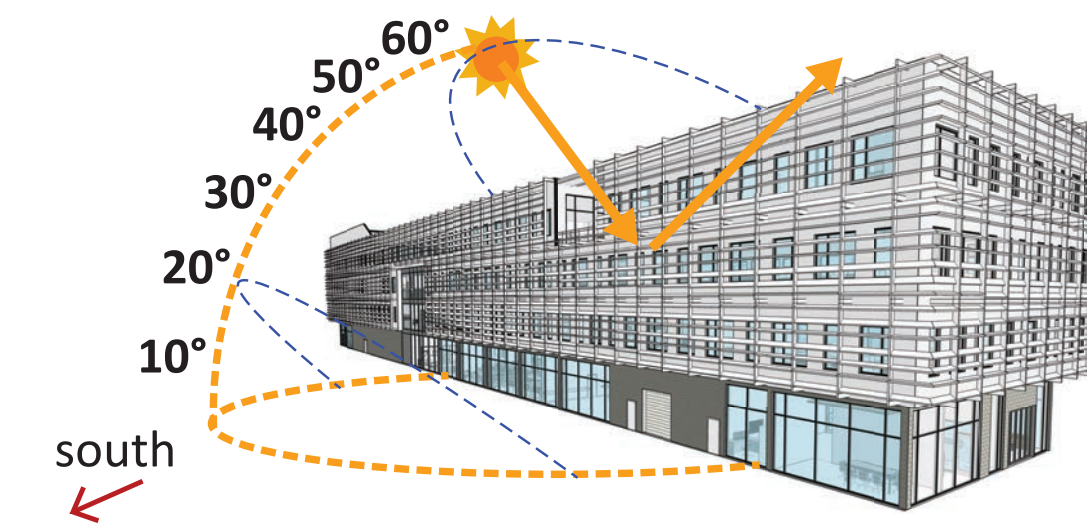
CHIMNEY EFFECT CREATED BY WARM AIR RISING TO ESCAPE THROUGH OPERABLE WINDOWS

XERISCAPE (NATIVE, FIREWISE LANDSCAPE DESIGN)

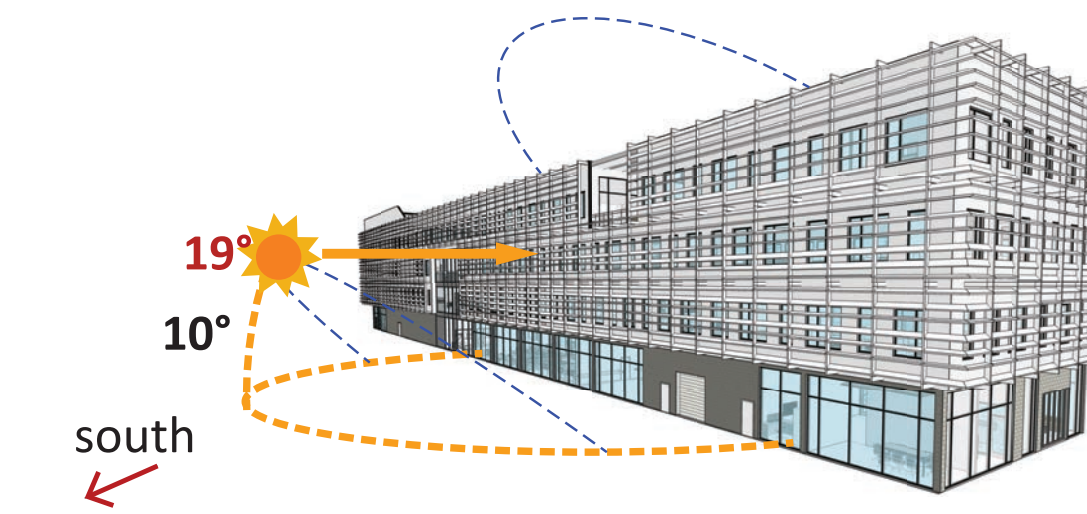


EXTERIOR WINDOW SHADES

SUMMER COOLING SEASON - HEAT LOAD REDUCTION



WINTER HEATING SEASON - PASSIVE HEATING



OPEN WORKSTATIONS LOCATED ALONG WINDOW WALLS - WITH PRIVATE OFFICES PULLED AWAY FROM ENVELOPE - FOR BETTER DAYLIGHTING

WINDOWS PLACED HIGH ON EXTERIOR WALLS BRING DAYLIGHT MORE DEEPLY INTO THE INTERIOR

GEO-EXCHANGE STRATEGIES TO EXISTING ON-SITE WELLS OR ADJACENT PROPERTY

DESIGN CONCEPT

Providing Stewardship

Chelan County PUD Service Center