

Xeriscape™

A cottage garden

FEAST your eyes on a garden filled with colors, texture, smells and sizes. Step into another world in your new garden.

All plants are drought tolerant and use little water. Follow the seven principles of Xeriscape™ when planning and designing your landscape. (For photos of the plants, see the Chelan County PUD Xeriscape brochure or visit the PUD's Web site at www.chelanpud.org.)

This design represents a starting point for your landscape.

For the first year, all plants need regular watering while they establish root systems. Water can be decreased the second year. Watch your plants for indications of stress, because their water needs will also depend upon your soil type.

The planting areas can be mounded with good topsoil and further set off with heavy mulch or bark.

Remember that the plants will be small the first year, so consider their mature size when spacing them. By the second year they will fill in.

The trees and shrubs can be pruned to desired shapes and sizes

Containers of various shapes, sizes and colors can be used to add even more flowers and color to the garden.

Interspersing herbs among the flowers will bring enticing odors to the garden and delicious variation to your cooking.

The trees and shrubs can be pruned to desired shapes and sizes.

In the fall, plant tulip, hyacinth and daffodil bulbs. This will give you early spring color and they will be gone by the time the other plants emerge.

A cottage garden is a perfect place for hardscape that will produce additional variety

The paths can be pea gravel, rocks, pavers or bark.

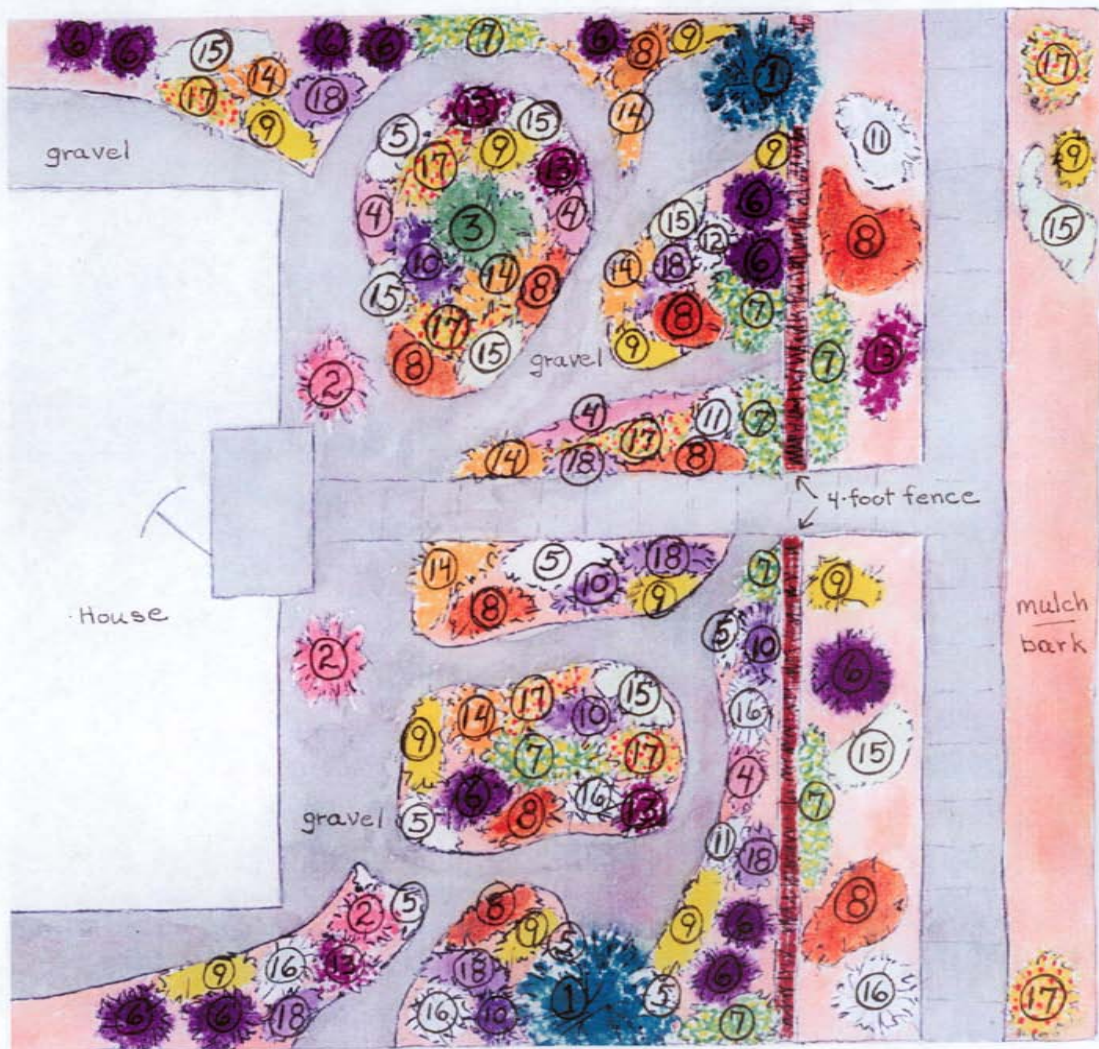
The 4-foot wall can be concrete blocks, bricks, lattice, wood or any combination of these materials.

A cottage garden is a perfect place for hardscape that will produce additional variety. Hardscape can be boulders, benches, tables, rocks, pots, garage sale treasures, arbors, fences and walls.

Drip irrigation to each plant will help keep weeds down and use a minimal amount of water.

This design represents a starting point for your landscape. Your yard and driveway will probably vary in its shape from this diagram. Arrange the plants and hardscape to suit your site. Depending upon the orientation of your yard and the sun and shade patterns, different plants may have to be used.

To learn more about the principles of Xeriscape and water conservation, call Chelan County PUD at (509) 661-8008 or visit this Web site: www.chelanpud.org.



Cottage garden

- | | |
|--|---|
| 1. Native American plum: <i>Prunus Americana</i> | 12-20 ft. high, sun, white fragrant spring flowers |
| 2. Rose of Sharon: <i>Hibiscus syriacus</i> | 10 ft. high, sun/light shade, pink summer flowers |
| 3. Flowering dogwood: <i>Cornus florida</i> | 20 ft. high, sun/light shade, white spring flowers, bright red fruits |
| 4. Purple coneflower: <i>Echinacea purpurea</i> | 3 ft. high, sun/shade, pink spring to fall flowers |
| 5. Snow-in-summer: <i>Cerastium tomentosum</i> | 6 in. high, sun/shade, white spring flowers |
| 6. Butterfly bush: <i>Buddleia</i> species | 6 ft. high, sun/shade, purple late spring flowers |
| 7. Maximilian sunflower: <i>Helianthus maximilliana</i> | 6 ft. high, sun, yellow fall flowers |
| 8. Penstemon species | 18 in. high, sun, spring to summer flowers, colors vary with species |
| 9. Coreopsis species | 18 in. high, sun, yellow spring to summer flowers |
| 10. Russian Sage: <i>Perovskia atriplicifolia</i> | 3 ft. high, sun, purple summer flowers |
| 11. Shasta daisy: <i>Tanacetum niveum</i> | 18 in. high, sun, white spring to summer flowers |
| 12. Jupiter's beard: <i>Centranthus ruber</i> "Albus" | 2 ft. high, sun/shade, white spring to summer flowers |
| 13. Gay feather: <i>Liatris punctata</i> | 18 in. high, sun, purple summer flowers |
| 14. Daylily: <i>Hemerocallis</i> species | 18-24 in. high, sun/shade, spring to summer flowers, colors vary with species |
| 15. Curlicue sage: <i>Artemisia versicolor</i> "Seafoam" | 18 in. high, sun, gray-green foliage |
| 16. Apache plume: <i>Felugia paradoxa</i> | 4 ft. high, sun, white spring to fall flowers, rapid growth |
| 17. Goblin blanket: <i>Gaillardia grandiflora</i> "Goblin" | 1 ft. high, sun, red with yellow spring to summer flowers |
| 18. Lavender species | 2 ft. high, sun/light shade, purple spring to summer flowers |

Substitute other Xeriscape plants of like color and size, if necessary.