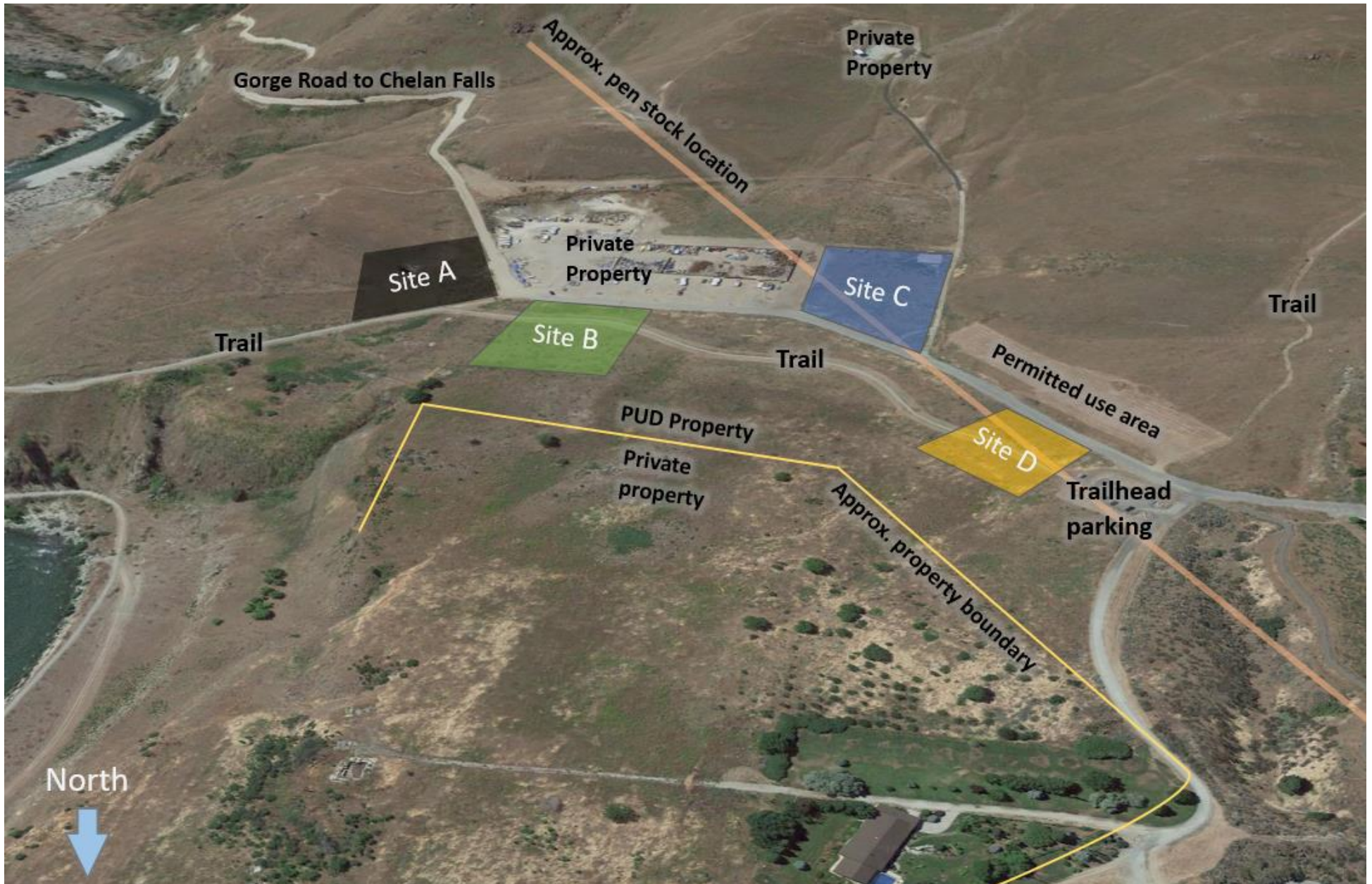


Chelan Dam Substation – Potential Sites

May 15, 2019



Substation Site Evaluation

System Considerations

Operating considerations determined the general location for the substation in southeast Chelan:

- Proximity to the service area/load center
- Proximity to existing transmission lines
- Positioned to pick up future load growth
- Positioned to alleviate load on existing substations
- PUD owns property in the area – limited land purchase considerations

Site Evaluation

Criteria	Site A	Site B	Site C	Site D
300' x 300' available	Limited configurations available	Yes	Limited – would require relocation of adjacent driveway	Yes
Overhead transmission line	Requires least transmission	Less transmission line	More transmission line	Requires most transmission line
Distribution get-aways	Requires most distribution get-aways	More distribution	Less distribution	Requires least distribution get-aways
Adequate access (County ROW)	Yes	Yes	Yes	Yes
Mobile sub access	Site improvements required	Yes	Yes	Yes
Flat land	No – steep slope requires significant excavation	Yes	Yes – some excavation required	Yes
Located over pen stock	No	No	Yes	Yes
Conflicts with existing trails	Possibly	Yes – trail segment would be relocated	No	Yes – trail segment would be relocated
Other considerations	Feasibility study needed to determine if excavating the slope is possible		Adjacent to permitted use area (poses hazard to hang gliding/ paragliding)	Adjacent to permitted use area (poses hazard to hang gliding/ paragliding)
				Adjacent to potential trailhead parking expansion
Public Feedback	Generally prefer due to: <ul style="list-style-type: none"> • Least transmission • Safer for hang gliding • Little trail impact • Furthest from existing homes 	Generally prefer due to: <ul style="list-style-type: none"> • Least transmission • Safer for hang gliding • Further from existing homes 	Less preference due to: <ul style="list-style-type: none"> • Proximity to permitted use area • Potential visibility from neighborhood • More transmission lines 	Less preference due to: <ul style="list-style-type: none"> • Proximity to permitted use area • Potential visibility from neighborhood • More transmission lines