

North Shore Chelan Substation



Load Center Focus
- Outreach to load center property owners
- Potential Site identification
- Future specific Site analysis

Legend

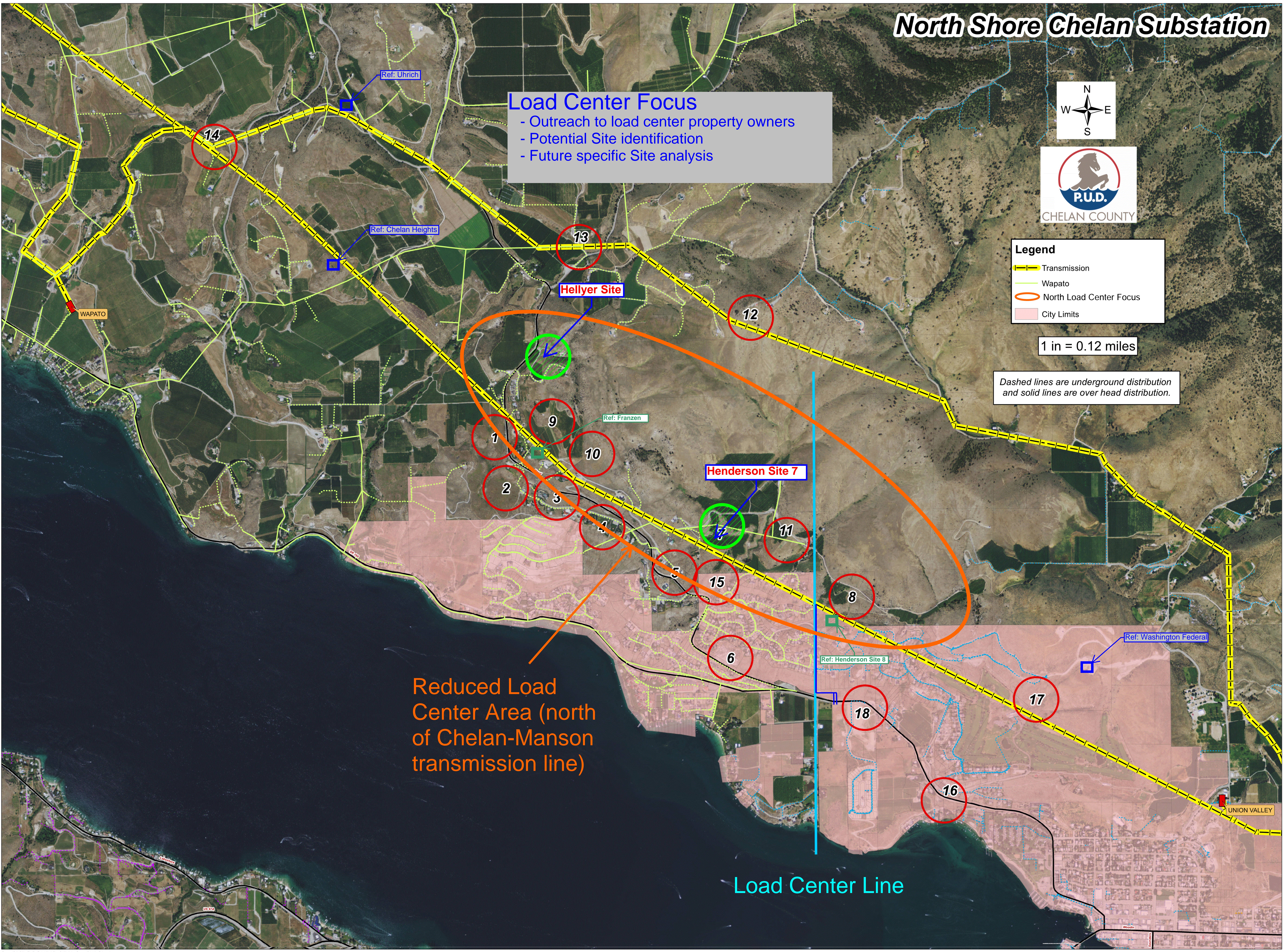
- Transmission (Yellow dashed line)
- Wapato (Green dashed line)
- North Load Center Focus (Orange circle)
- City Limits (Pink shaded area)

1 in = 0.12 miles

Dashed lines are underground distribution and solid lines are over head distribution.

Reduced Load Center Area (north of Chelan-Manson transmission line)

Load Center Line



Boyd Road Substation

- Proposed Feeder Circuit Routes
- Visual & Easement Impacts
- T&D Distances
- Preliminary Cost Estimates



Legend

- Alternative Trans Route
- Circuit Tie In
- Existing Dist OH
- Existing Distribution UG
- Feeder Route
- Hellyer Substation Site
- Primary Trans Route
- Transmission Tie In

T&D Distances:

Trans:	0.6 mi
Dist OH:	0.7 mi
Dist UG:	2.2 mi
Total T&D:	3.5 mi

Visual Impacts:

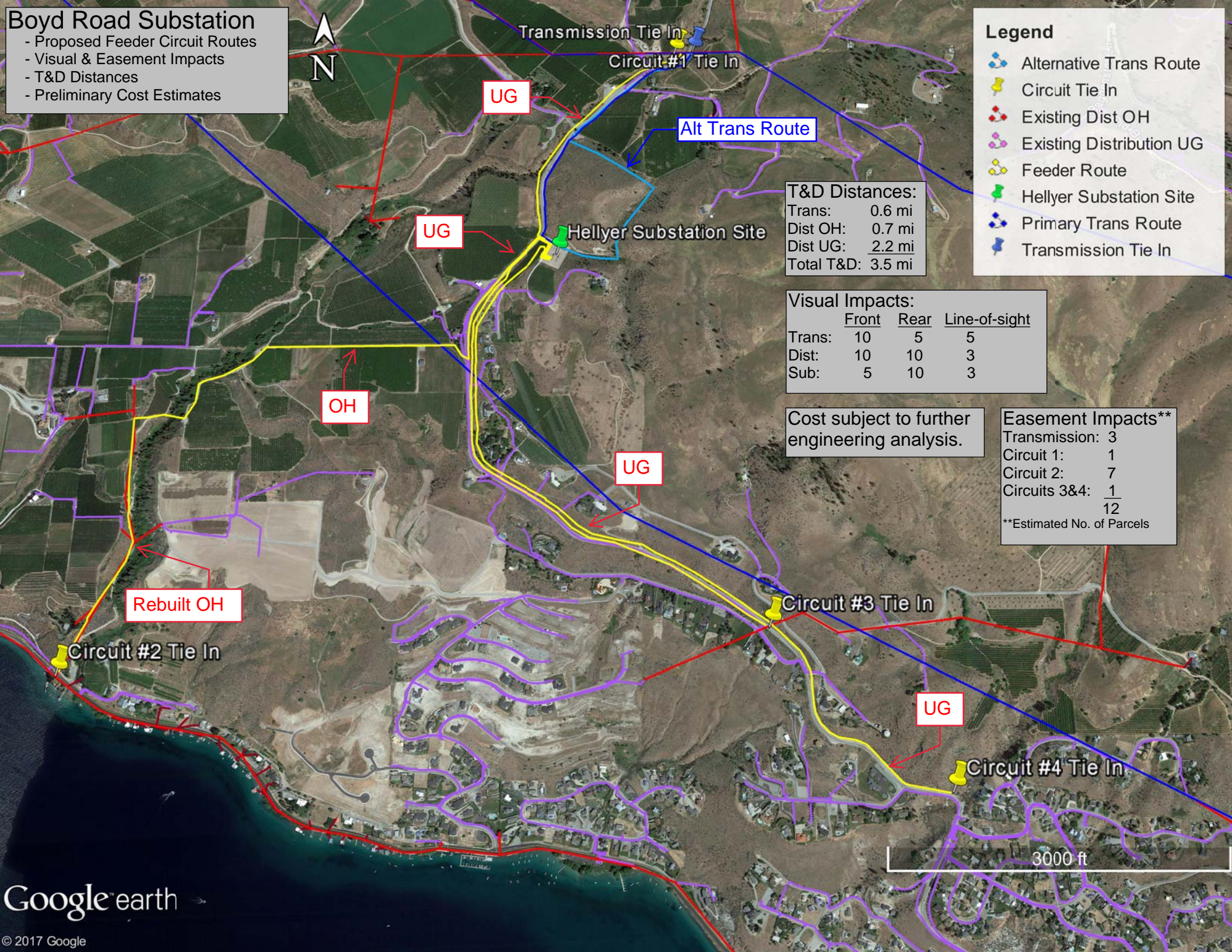
	Front	Rear	Line-of-sight
Trans:	10	5	5
Dist:	10	10	3
Sub:	5	10	3

Cost subject to further engineering analysis.

Easement Impacts**

Transmission:	3
Circuit 1:	1
Circuit 2:	7
Circuits 3&4:	$\frac{1}{12}$

**Estimated No. of Parcels



Henderson Site 7 Substation

- Proposed Feeder Circuit Routes
- Visual & Easement Impacts
- T&D Distances
- Preliminary Cost Estimates



Legend

- Circuit Tie In
- Existing Dist OH
- Existing Dist UG
- Existing Transmission
- Feeder Route
- Henderson Substation Site
- New Transmission
- Transmission Tie In

Circuit #2 Tie In

UG

Circuit #1 Tie In

UG

OH

UG

Henderson Substation Site

OH

UG

UG

Circuit #3 & #4 Tie

T&D Distances:

Trans:	0.1 mi
Dist OH:	0.4 mi
Dist UG:	1.7 mi
Total T&D:	2.3 mi

Visual Impacts:

	Front	Rear	Line-of-sight
Trans:	5	5	0
Dist:	5	10	0
Sub:	5	5	0

Cost subject to further engineering analysis.

Easement Impacts*

Circuit 1:	4
Circuit 2:	2
Circuits 3&4:	2
	8

*Estimated No. of Parcels

