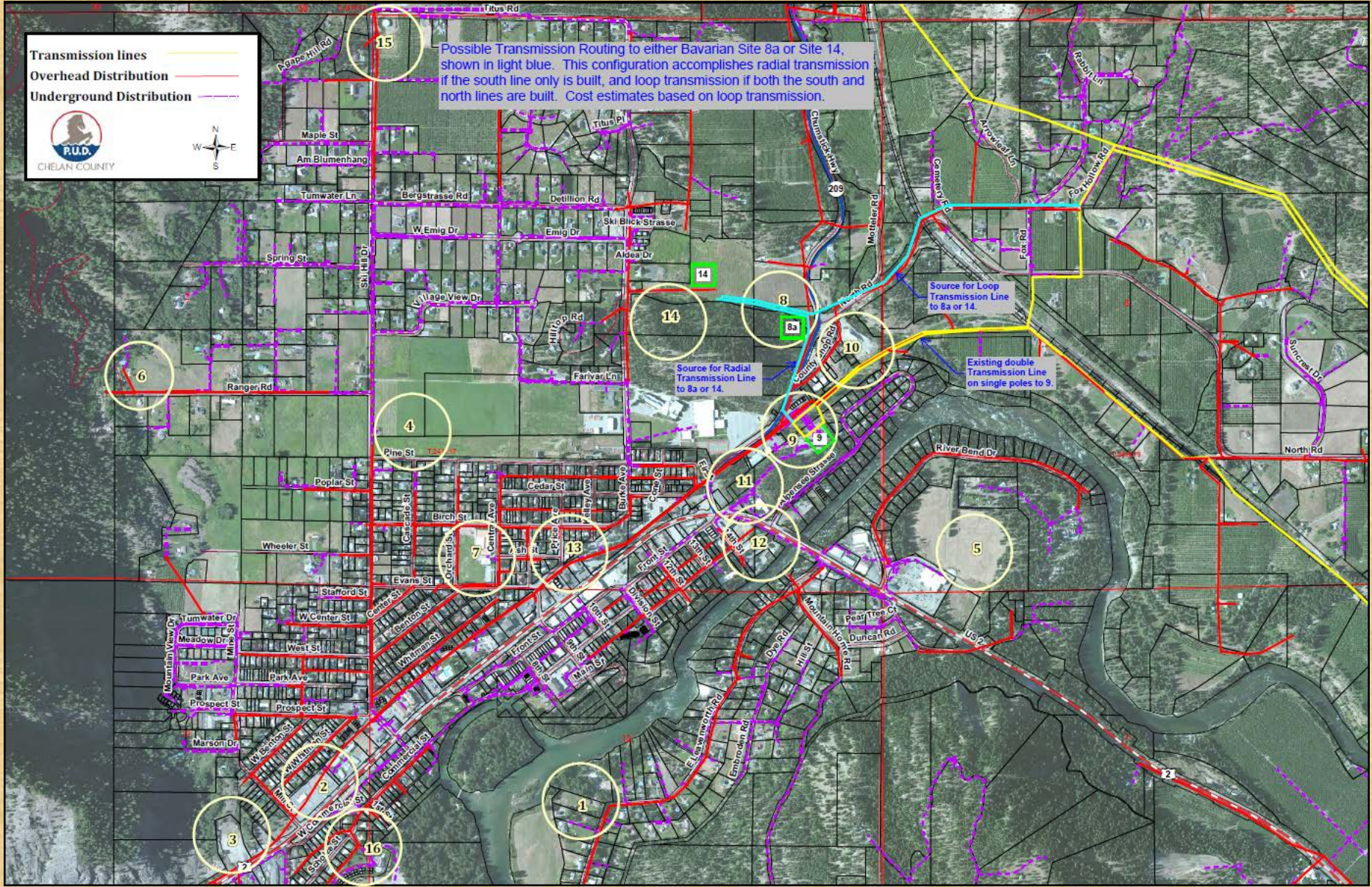


Transmission lines ———
Overhead Distribution ———
Underground Distribution - - -

Possible Transmission Routing to either Bavarian Site 8a or Site 14, shown in light blue. This configuration accomplishes radial transmission if the south line only is built, and loop transmission if both the south and north lines are built. Cost estimates based on loop transmission.



Bavarian Substation - Site Comparison

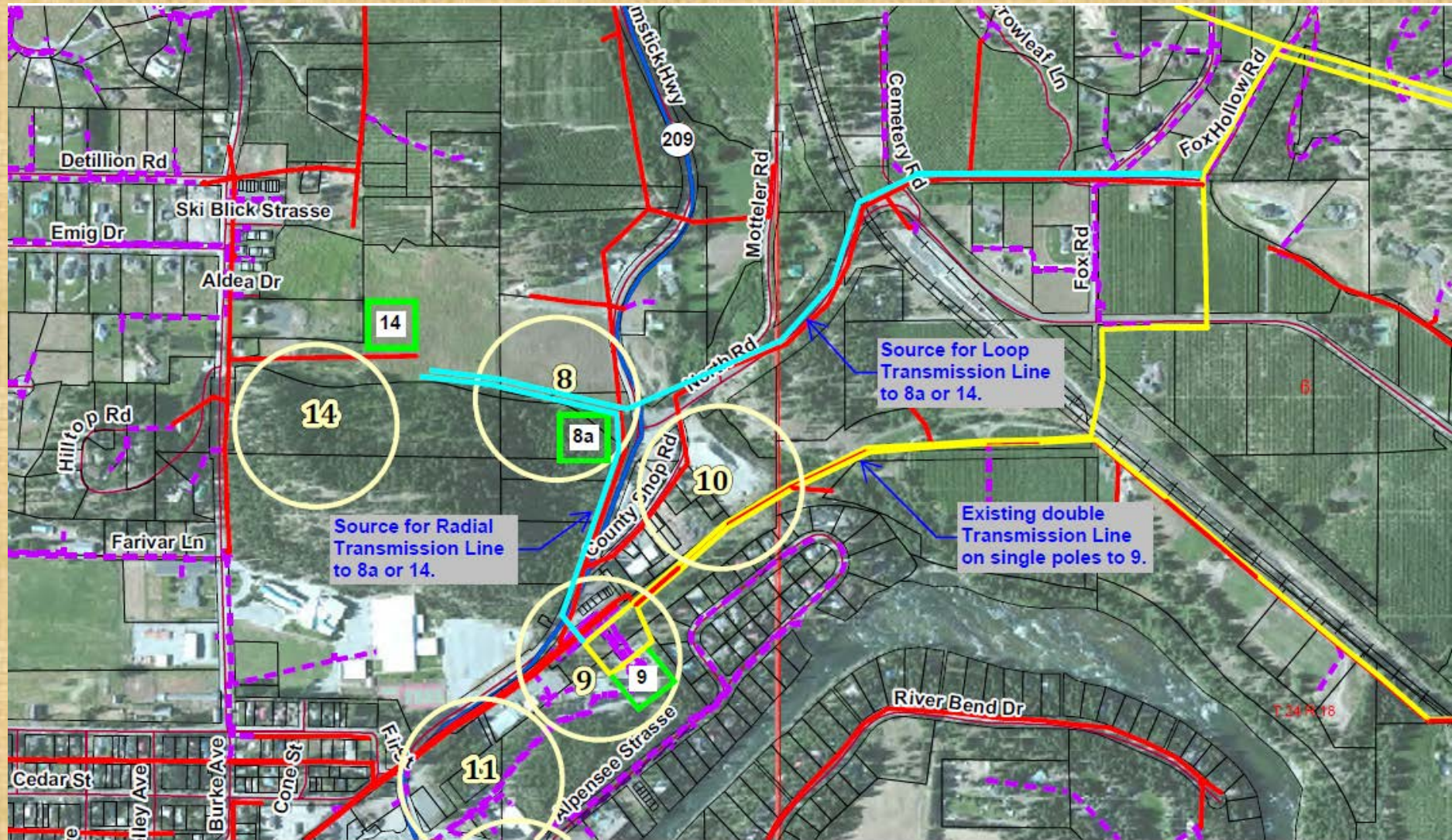
Feb. 13, 2017

	Site 8a	Site 14	Site 9
Earthwork Costs	1,660,000	709,000	458,000
Substation Costs	3,403,000	3,403,000	4,906,000
Distribution Costs	842,000	774,000	1,680,000
Transmission Costs	<u>2,472,000</u>	<u>2,862,000</u>	<u>868,000</u>
Total Costs	8,377,000	7,748,000	7,912,000

Considerations:

Contingency: All work element contingency is 20%; except Transmission Construction, which is 30%

	Pro	Con	Neutral
Site 8a	X		Earthwork Risk is high
	X		Site is sloped at 3.1 %
	X		Site has room for expansion to double bank
	X		Dual Transmission Source - Separate Route
		X	Land Use - Neutral
		X	Site Visibility - Chumstick Hwy/ Future Residential Area
Site 14		X	Distribution underbuild to Chumstick
		X	Transmission to south of yard would require larger yard
	X		Site has room for expansion to double bank
	X		Dual Transmission Source - Separate Route
		X	Land Use - Displaces future housing development
		X	Site Visibility - Future Residential Development
Site 9	X		Breaker-and-a-half required - complex constr. & operation
	X		Distribution cost has high uncertainty
	X		Site does not have room for expansion to double bank
		X	Dual Transmission Source - Same Route
	X		Land Use - Same land use
		X	Site Visibility - Adjacent to Existing Residential Area

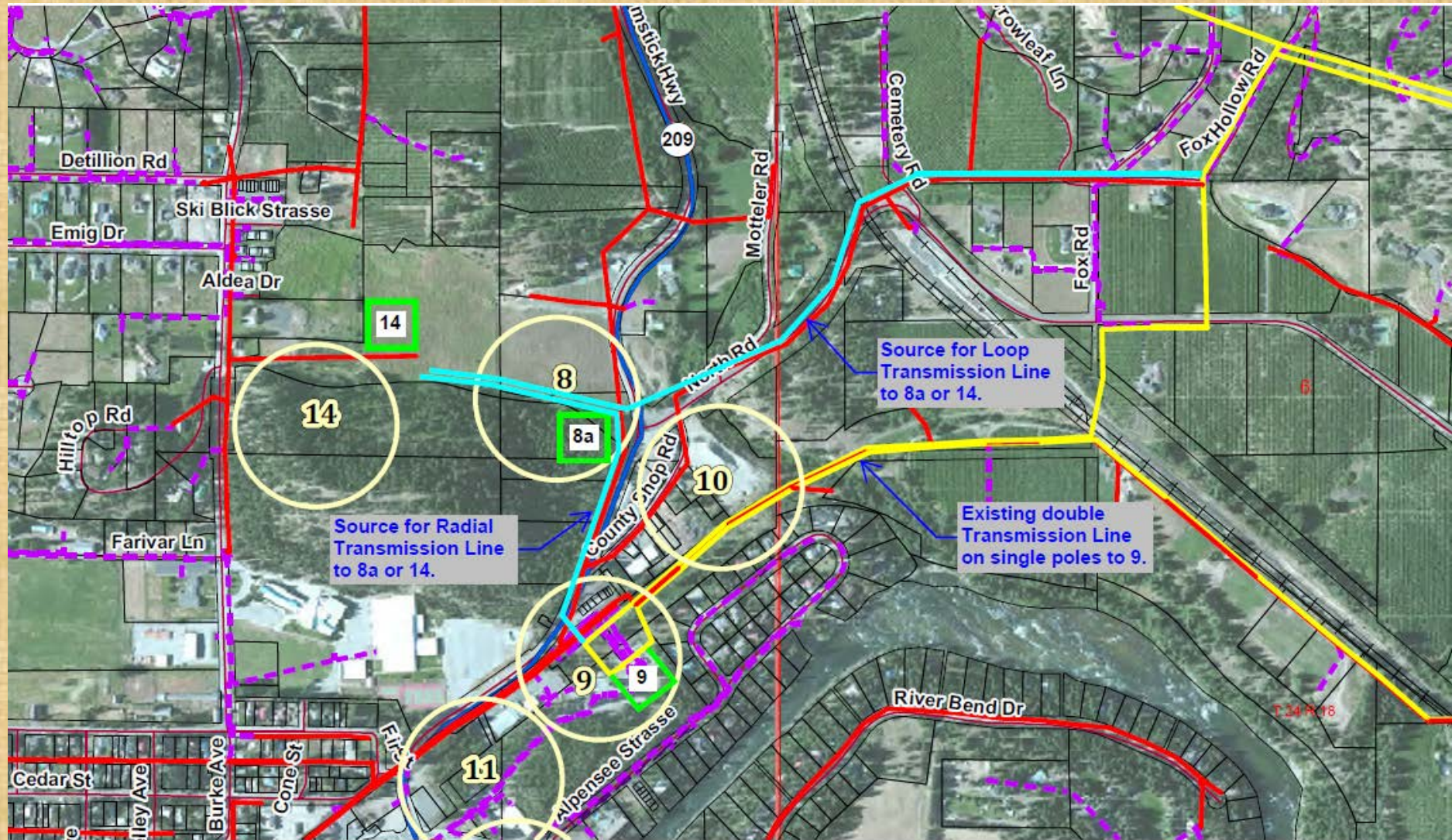


SITE 8A ESTIMATED COSTS

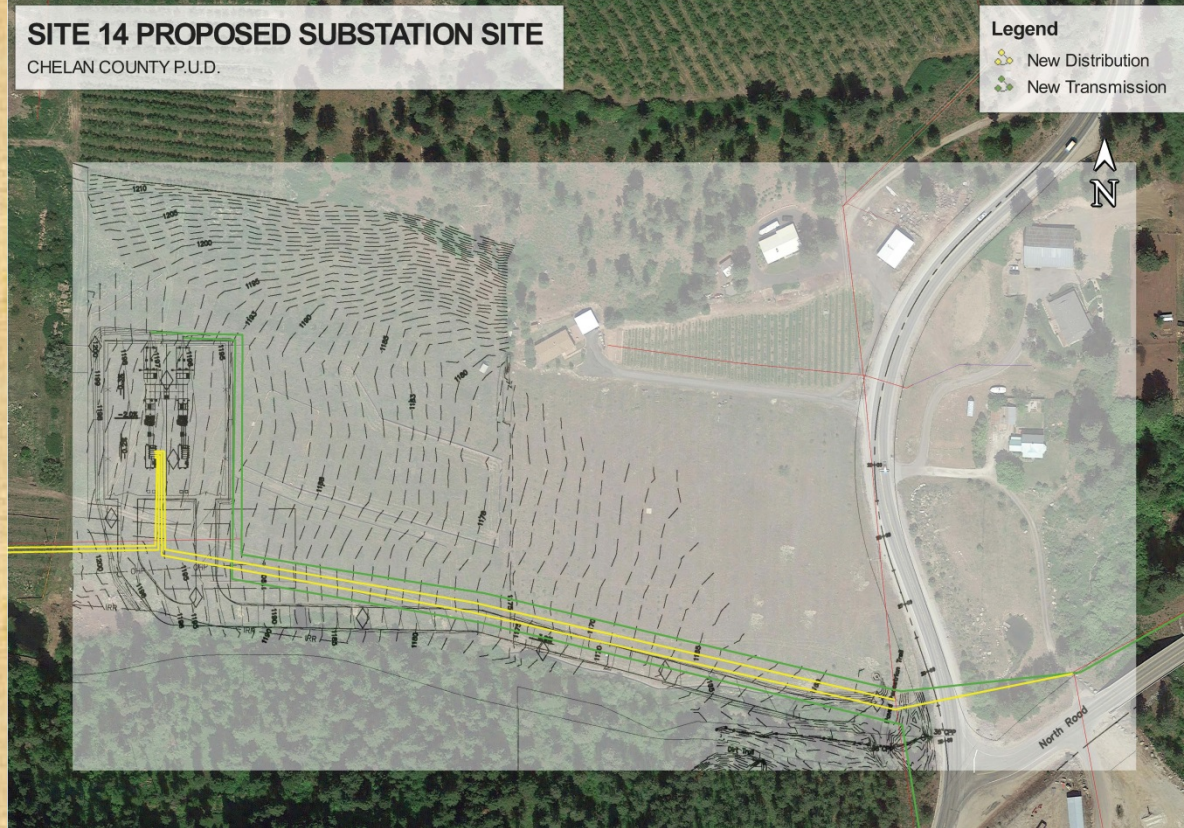


- EARTHWORK COSTS – \$1,660,000
- SUBSTATION COSTS – \$3,403,000
- DISTRIBUTION COSTS – \$842,000
- TRANSMISSION COSTS – \$2,472,000
- TOTAL COSTS - \$8,377,000



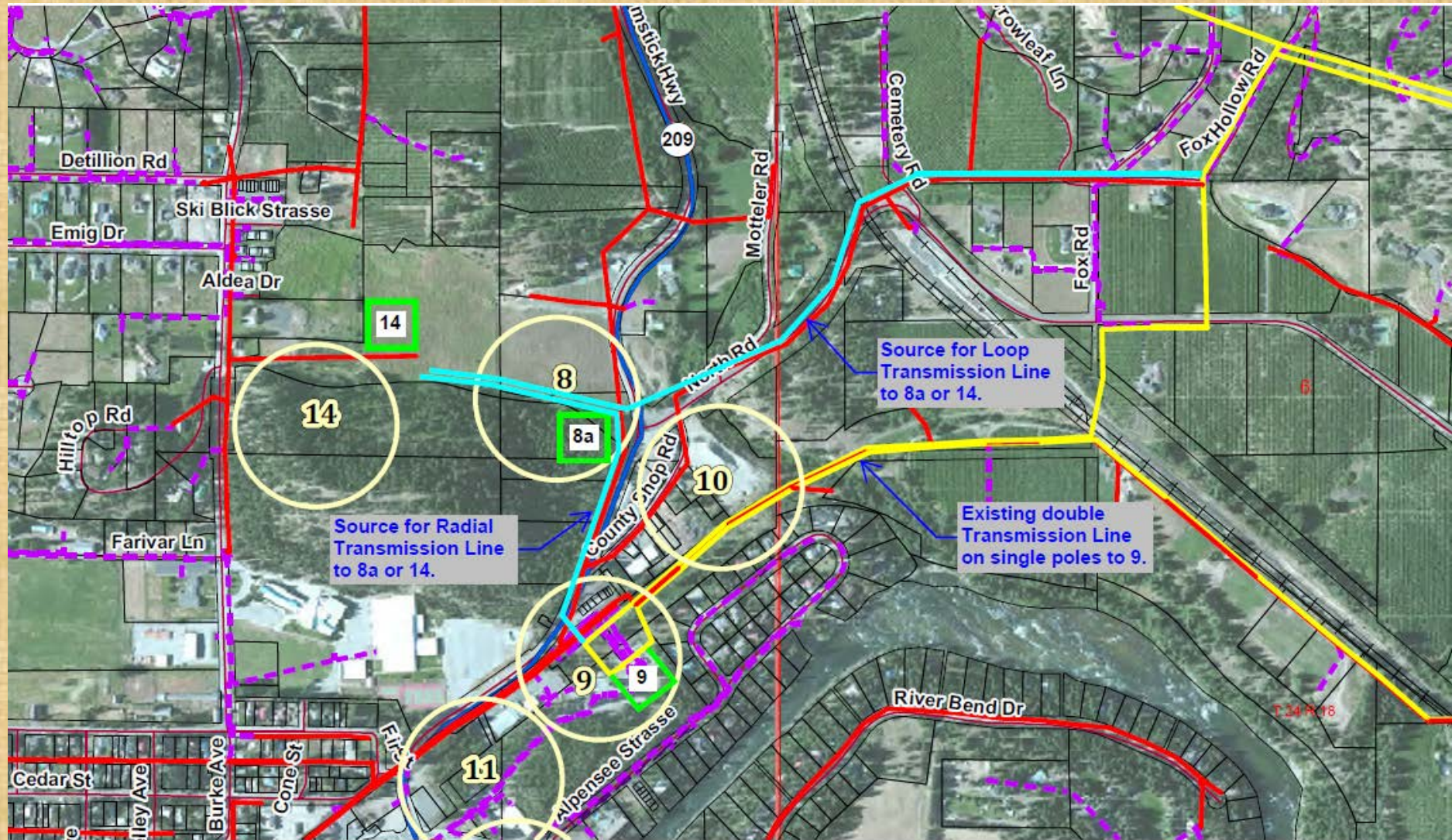


SITE 14 ESTIMATED COSTS



- EARTHWORK COSTS – \$709,000
- SUBSTATION COSTS – \$3,403,000
- DISTRIBUTION COSTS – \$774,000 (Includes underbuilt distribution)
- TRANSMISSION COSTS – \$2,862,000
- TOTAL COSTS - \$7,748,000





SITE 9 ESTIMATED COSTS*

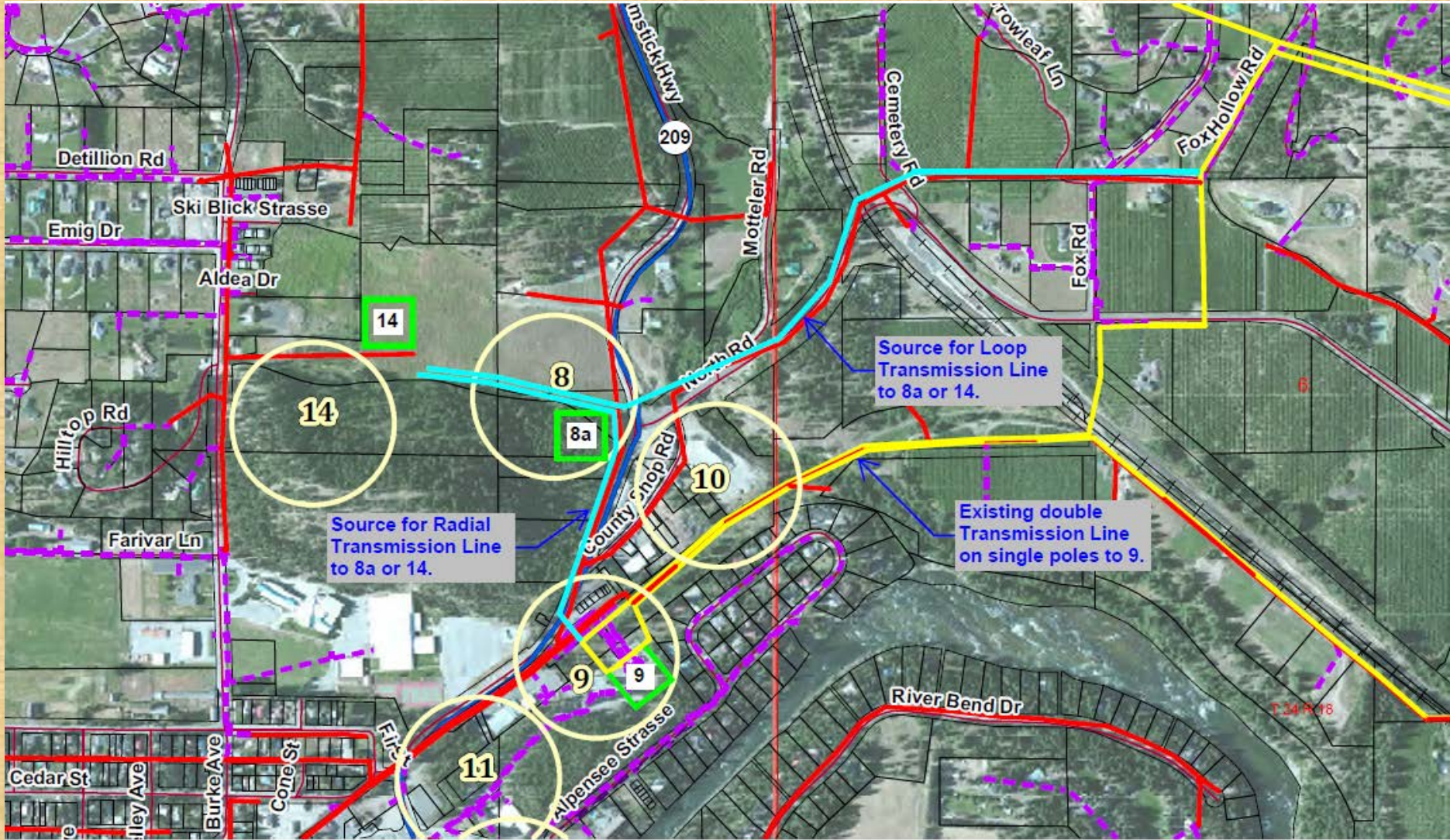


- EARTHWORK COSTS – \$458,000
- SUBSTATION COSTS – \$4,906,000
- DISTRIBUTION COSTS – \$1,680,000
- TRANSMISSION COSTS – \$868,000
- TOTAL COSTS - \$7,912,000

*Notes:

1. Costs include modification to a “breaker-and-a-half” configuration for the combined site. This is required to operate three breakers.
2. Addition of the breaker-and-a half, breakers and switches not shown for clarity.

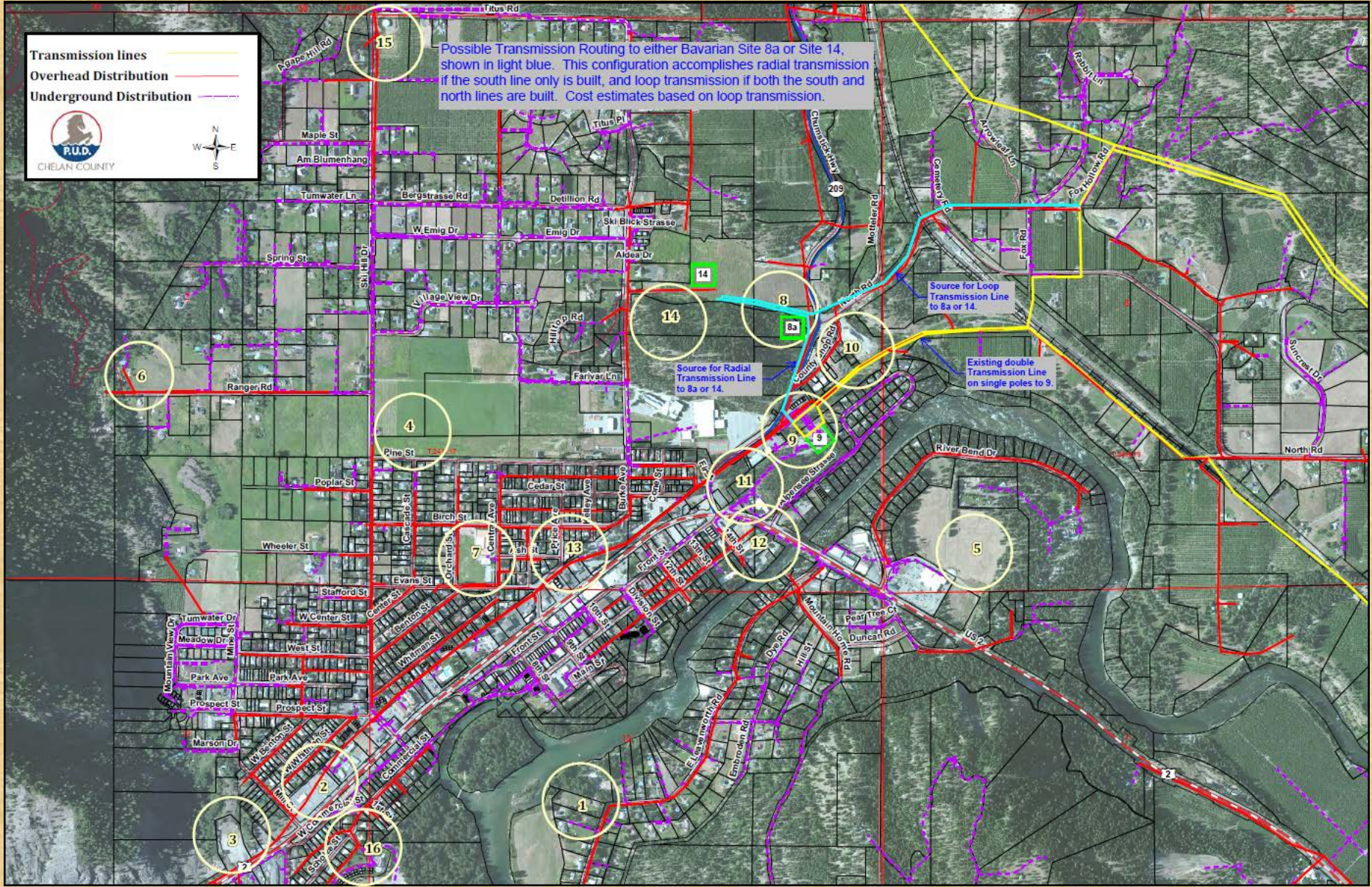




Transmission lines 
Overhead Distribution 
Underground Distribution 




Possible Transmission Routing to either Bavarian Site 8a or Site 14, shown in light blue. This configuration accomplishes radial transmission if the south line only is built, and loop transmission if both the south and north lines are built. Cost estimates based on loop transmission.



Source for Loop Transmission Line to 8a or 14.

Source for Radial Transmission Line to 8a or 14.

Existing double Transmission Line on single poles to 9.