

RESOLUTION NO. 11-13624

A RESOLUTION ESTABLISHING RATE INCREASES
FOR WATER AND WASTEWATER SERVICES

FACTUAL BACKGROUND AND REASONS FOR ACTION

The District, in compliance with RCW 54.24.080, is required to establish, maintain, and collect rates or charges for electric energy and water and other services, facilities, and commodities sold, furnished, or supplied by the District. The rates and charges shall be fair, nondiscriminatory, and shall be adequate to provide revenues sufficient for the payment of the principal of and interest on such revenue obligations for which the payment has not otherwise been provided and all payments which the District is obligated to set aside in any special fund or funds created for such purpose, and for the proper operation and maintenance of the public utility and all necessary repairs, replacements, and renewals thereof.

In a strategic planning effort that began in August 2006, the General Manager and District staff analyzed and discussed with the Commission the costs and revenues in each area of operation of the District. Financial analyses and policy discussions were held during a series of public meetings. The information, analyses and discussions were designed to set the utility's course through 2012.

Rate increases to water and wastewater services was discussed during public meetings as part of the annual budget process presented for Board approval in December 2010. Staff presented budgets that included salary freezes, cost reductions, capital project delays, water and wastewater rate increases and an eight (8) month extension of the surcharge through 2011. Even with all actions proposed, staff reported that utility services losses are expected to be almost \$7 million for 2011 in an average water year, senior debt coverage will require additional action in an unusually low water year (as results could fall below the 1.0 bond covenant), and the five year financial forecast indicates that caution is needed in order to comply with the District's financial policies for 2013 – 2015.

In light of those considerations, the General Manager recommended a rate increase to water and wastewater services. The District Commissioners directed staff to initiate the public process required for rate increases. Public notices of the meetings were provided and meetings were held January 11, 2011 in Entiat, January 17, 2011 in Wenatchee, and January 18, 2011 in Cashmere. A public hearing was publicly advertised to occur on February 7, 2011.

The General Manager recommended that the following rate increases be considered for adoption: 5% for water and wastewater to be applied equally to all rate

classes and a step increase of 25% to the Dryden water and wastewater usage rates to bring them closer in line with cost of service and other District systems. A 5% increase to the existing low-income assistance discounts is included in the rates.

The proposed rates are attached as Exhibit A. New rates shall be effective April 1, 2011.

Further, staff recommends that System Development charges and other onetime fees and charges not be part of the rate schedules, be removed from the rate schedules and placed in Fees and Charges. Resolution No. 07-13163 delegates authority to the General Manager to revise and adjust fees and charges with reporting to the Commission.

ACTION

IT IS RESOLVED BY THE COMMISSION OF PUBLIC UTILITY DISTRICT NO.1 OF CHELAN COUNTY, WASHINGTON, as follows:

Section 1. The Commission held public informational meetings and a public hearing. The Commission considered staff recommendations and public input.

Section 2. The water and wastewater rates set forth in Exhibit A attached hereto are determined to be fair, reasonable, necessary and non-discriminatory. The rates set forth in Exhibit A are effective April 1, 2011.

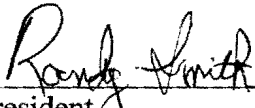
Section 3. The water and wastewater service rates established by prior Commission actions are hereby rescinded and replaced by rates included in the attached Exhibit A.

Section 4. The rate increase does not apply to System Development Charges and other onetime fees and charges. These charges are removed from the Water and Wastewater Rate schedule and placed in the District's Fees and Charges schedule and will be subject to Resolution No. 07-13163.

Section 5. The adoption of this rate resolution is not a major action under the State Environmental Policy Act, and as such is categorically exempt under S.E.P.A. guidelines, W.A.C., Ch 197-11-800(15)(i).


Section 6. This resolution rescinds and supersedes prior resolutions and Commission actions that are inconsistent with this resolution and exhibit. This resolution shall not render invalid any previous action by this Commission regarding rates, service regulations, policies, fees, charges or agreements except as specifically included in this resolution and exhibit.

Dated this 7th day of February 2011.



President

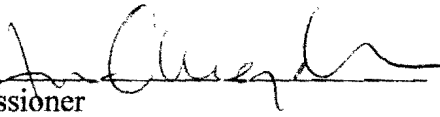
ATTEST:




Vice President



Secretary



Commissioner



Commissioner

Seal

Exhibit A
Water Rate Schedules



TABLE OF CONTENTS

SECTION	PAGE
TABLE OF CONTENTS	2
RATE DISCOUNT FOR RESIDENTIAL WATER SERVICE	3
WENATCHEE, SQUILCHUCK, OLLALA, AND CHELAN RIDGE WATER SYSTEMS	4
RESIDENTIAL SERVICE	4
COMMERCIAL, INDUSTRIAL AND INTERDEPARTMENTAL SERVICES	4
ADDITIONAL RATE LINE ITEMS	4
TAX ADJUSTMENT	5
SERVICE POLICY	5
DRYDEN WATER SYSTEM	6
RESIDENTIAL AND COMMERCIAL SERVICES	6
ADDITIONAL UNITS	6
TAX ADJUSTMENT	6
SERVICE POLICY	6
CHELAN FALLS WATER SYSTEM	7
RESIDENTIAL, COMMERCIAL, INDUSTRIAL SERVICE AND INTERDEPARTMENTAL HYDRANT	7
ADDITIONAL UNITS	7
RATE DISCOUNT FOR RESIDENTIAL WATER SERVICE	7
HYDRANT VALVE CHARGES	7
INTERDEPARTMENTAL SERVICE	8
FIRE SPRINKLER SERVICE RATE	8
PRIVATE FIRE HYDRANT SERVICE RATE	8
TAX ADJUSTMENT	8
SERVICE POLICY	8
FIRE SPRINKLER SERVICE RATE	9
WENATCHEE, SQUILCHUCK, AND OLLALA WATER SYSTEMS	9
PRIVATE FIRE HYDRANT SERVICE RATE	9
WENATCHEE, SQUILCHUCK, OLLALA, AND CHELAN RIDGE WATER SYSTEMS	9
HYDRANT VALVE CHARGES	9
WENATCHEE, SQUILCHUCK, OLLALA, AND CHELAN RIDGE WATER SYSTEMS	9
RESOLUTION HISTORY	10

RATE DISCOUNT FOR RESIDENTIAL WATER SERVICE

A rate discount not to exceed \$7.50* per month is available to all qualifying low-income seniors 62 years and older and low-income disabled as provided for in State of Washington R.C.W. 74.38.070. The rate discount will not exceed the amount of the monthly bill up to \$7.50* per month and will be applied to one residential water account only.

QUALIFYING CRITERIA FOR LOW-INCOME SENIORS

1. Age 62 years or older prior to or during the month in which the discount is to apply.
2. Total household income including his or her spouse or co-tenant does not exceed the amount specified in R.C.W. 84.36.381 (5) (b).
3. Ownership or occupancy as head of household residing therein at certain property being served water within the District's service area.

LOW-INCOME DISABLED

1. Physical disability prior to application.
2. Special parking privileges as defined in State of Washington R.C.W 46.16.381(1) (a) through (f) or a blind person as defined in R.C.W 74.18.020.
3. Household income does not exceed 125% of Federal Poverty Income Guidelines.
4. Ownership or occupancy as head of household residing therein at certain property being served water within the District's service area.

* Rate discount for Chelan Falls residential water service is \$6.15. See Chelan Falls Water System.

WENATCHEE, SQUILCHUCK, OLLALA, AND CHELAN RIDGE WATER SYSTEMS

RESIDENTIAL SERVICE

RATE SCHEDULE 111, 311, 711 AND 811

Meter Size	Basic Monthly Charge
5/8"	\$ 26.25
1"	\$ 31.50
1 1/2"	\$ 42.00
2"	\$ 57.75
3"	\$ 189.00

RESIDENTIAL QUANTITY RATE

First 3,000 gallons per month @ \$2.20 per 1,000 gallons
3,001 to 10,000 gallons per month @ \$3.05 per 1,000 gallons
Over 10,000 gallons per month @ \$3.90 per 1,000 gallons

COMMERCIAL, INDUSTRIAL AND INTERDEPARTMENTAL HYDRANT VALVE SERVICES

RATE SCHEDULES 121, 131, 143, 161, 321, 343, 843 AND 871

Meter Size	Basic Monthly Charge
5/8"	\$ 42.00
1"	\$ 50.40
1 1/2"	\$ 63.00
2"	\$ 92.40
3"	\$ 302.40
4"	\$ 382.20
6"	\$ 562.80

COMMERCIAL, INDUSTRIAL AND INTERDEPARTMENTAL HYDRANT VALVE QUANTITY RATE

Charge per 1,000 gallons used \$ 2.76

ADDITIONAL RATE LINE ITEMS

Each additional unit \$ 16.30 per month

Chelan Ridge privately owned lots (no meter) \$ 28.05 per month

Squilchuck Debt Service- Each meter and additional dwelling or commercial unit will be charged a monthly Debt Service charge of \$6.55.

TAX ADJUSTMENT

The amount of tax levied by any city or town in accordance with R.C.W 54.28.070, of the Laws of the State of Washington, will be added to the above charges for water sold within the limits of any such city or town.

CONNECTION FEES AND SERVICE CHARGE

Connection fees and service charges are as stipulated in the District's Fees and Charges.

SERVICE POLICY

Service under this schedule is subject to the rules and regulations as defined in the District's Utility Service Regulations.

DRYDEN WATER SYSTEM

RESIDENTIAL AND COMMERCIAL SERVICES

RATE SCHEDULES 511 AND 521

Meter Size	Basic Monthly Charge
5/8"	\$ 26.25
1"	\$ 31.50

RESIDENTIAL QUANTITY RATE

First 3,000 gallons per month @ \$1.35 per 1,000 gallons
3,001 to 10,000 gallons per month @ \$2.35 per 1,000 gallons
Over 10,000 gallons per month @ \$3.35 per 1,000 gallons

COMMERCIAL QUANTITY RATE

Charge per 1,000 gallons used \$ 2.04

ADDITIONAL UNITS

Each additional unit \$ 16.30

INTERDEPARTMENTAL HYDRANT VALVE QUANTITY RATE

RATE SCHEDULES 543

Charge per 1,000 gallons used \$2.76

TAX ADJUSTMENT

The amount of tax levied by any city or town in accordance with R.C.W 54.28.070, of the Laws of the State of Washington, will be added to the above charges for water sold within the limits of any such city or town.

CONNECTION FEES AND SERVICE CHARGE

Connection fees and service charges are as stipulated in the District's Fees and Charges.

SERVICE POLICY

Service under this schedule is subject to the rules and regulations as defined in the District's Utility Service Regulations.

CHELAN FALLS WATER SYSTEM

RESIDENTIAL, COMMERCIAL, INDUSTRIAL SERVICE AND INTERDEPARTMENTAL HYDRANT VALVE

RATE SCHEDULES 611, 621, 631 AND 643

Services	Basic Monthly Charge
Residential Service	\$ 20.00
Commercial Service	\$ 45.00
Industrial Service	\$ 500.00

RESIDENTIAL QUANTITY RATE

First 3,000 gallons per month @ \$0.42 per 1,000 gallons
 3,001 to 10,000 gallons per month @ \$0.53 per 1,000 gallons
 Over 10,000 gallons per month @ \$0.79 per 1,000 gallons

COMMERCIAL, INDUSTRIAL, AND INTERDEPARTMENTAL HYDRANT VALVE QUANTITY RATE

Charge per 1,000 gallons used \$0.42

ADDITIONAL UNITS

Each additional unit \$ 11.05

RATE DISCOUNT FOR RESIDENTIAL WATER SERVICE

A rate discount not to exceed \$6.15 per month is available to all qualifying low-income seniors 62 years and older and low-income disabled as provided for in State of Washington R.C.W. 74.38.070. The rate discount will not exceed the amount of the monthly bill up to \$6.15 per month and will be applied to one residential water account only. See page three for qualifying criteria.

PRIVATE HYDRANT VALVE CHARGES

Water consumption will be charged at the commercial quantity rate charged for the system it is used on.

RATE SCHEDULES 641 AND 642

All Water Systems:	District Owned	Customer Owned
Hydrant Valve Daily Usage Charge	\$ 12.50+ water	- 0 -
Fire Hydrant Daily Usage Charge	\$ 12.50+ water	\$ 12.50+ water

Note:

1. Additional onetime fees may apply. See [Fees & Charges](#)

Exhibit A
Water Rate Schedules

INTERDEPARTMENTAL SERVICE

RATE SCHEDULES 661

Connection Size	Monthly Charge
1.5"	\$ 45.00
2"	\$ 45.00
4"	\$ 500.00

INTERDEPARTMENTAL QUANTITY RATE

Charge per 1,000 gallons used \$0.42

FIRE SPRINKLER SERVICE RATE

RATE SCHEDULES 681

Connection Size	Monthly Charge
2"	\$ 20.00
3"	\$ 27.48
4"	\$ 34.37
6"	\$ 68.62
8"	\$103.12
10"	\$137.22

QUANTITY RATE

Charge per 1,000 gallons used \$ 2.31

PRIVATE FIRE HYDRANT SERVICE RATE

RATE SCHEDULES 682

Fire Hydrant Service \$8.06 per month

TAX ADJUSTMENT

The amount of tax levied by any city or town in accordance with RCW 54.28.070, of the laws of the State of Washington, will be added to the above charges for water sold within the limits of any such city or town.

CONNECTION FEES AND SERVICE CHARGE

Connection fees and service charges are as stipulated in the District's Fees and Charges.

SERVICE POLICY

Service under this schedule is subject to the rules and regulations as defined in the District's Utility Service Regulations.

EFFECTIVE: APRIL 1, 2007 BY RESOLUTION 07-03

Rate increases are approved by:

Chelan Falls Water District's Board of Commissioners

This system is owned by the Chelan Falls Water District and operated and maintained by Chelan County Public Utility District.

FIRE SPRINKLER SERVICE RATE

WENATCHEE, SQUILCHUCK, AND OLLALA WATER SYSTEMS
RATE SCHEDULES 181, 381, AND 581

Connection Size	Monthly Charge
2"	\$ 24.70
3"	\$ 34.15
4"	\$ 42.55
6"	\$ 85.60
8"	\$128.65
10"	\$171.15

QUANTITY RATE

Charge per 1,000 gallons used \$ 2.76

PRIVATE FIRE HYDRANT SERVICE RATE

WENATCHEE, SQUILCHUCK, OLLALA, AND CHELAN RIDGE WATER
SYSTEMS

RATE SCHEDULES 182, 382, 582, AND 882

Fire Hydrant Service \$10.00 per month

HYDRANT VALVE CHARGES

Water consumption will be charged at the commercial quantity rate charged for the system it is used on.

WENATCHEE, SQUILCHUCK, OLLALA, AND CHELAN RIDGE WATER
SYSTEMS

RATE SCHEDULES 141, 142, 341, 342, 541, 542, 841, 842:

All Water Systems:	District Owned	Customer Owned
Hydrant Valve Daily Usage Charge	\$15.75+ water	- 0 -
Fire Hydrant Daily Usage Charge	\$15.75+ water	\$15.75+ water

Note:

1. Additional onetime fees may apply. See Fees & Charges

RESOLUTION HISTORY

PUBLIC UTILITY DISTRICT NO. 1 OF CHELAN COUNTY

WATER RATE SCHEDULES

Resolution No. 91-9122	December 1, 1991	All Systems
Resolution No. 93-9579	May 1, 1993	All Systems
Resolution No. 97-10658	February 3, 1997	Chelan Ridge
Resolution No. 98-10970	March 30, 1998	Ollala Canyon, Dryden, Wenatchee
Commission Motion	October 1, 1998	Squilchuck, Debt Service Adjustment
Resolution No. 99-11350	December 20, 1999	All Systems
Resolution No. 00-11626	December 4, 2000	All Systems
Resolution No. 01-11764	April 23, 2001	All Systems
Resolution No. 02-12057	April 1, 2002	All Systems, Except Chelan Falls
Resolution No. 03-12467	December 8, 2003	All Systems, Except Chelan Falls
Resolution No. 07-13162	September 10, 2007	All District Owned Systems
Resolution No. 08-13395	October 27, 2008	All District Owned Systems

Exhibit A
Wastewater Rate Schedules



TABLE OF CONTENTS

SECTION	PAGE
TABLE OF CONTENTS	2
RATE DISCOUNT FOR RESIDENTIAL WASTEWATER SERVICE	3
LAKE WENATCHEE WASTEWATER SYSTEM	4
RESIDENTIAL	4
SMALL GENERAL SERVICE	4
MEDIUM GENERAL SERVICE	5
LARGE GENERAL SERVICE	5
SEPTIC SERVICE	5
ADDITIONAL UNITS	6
CONNECTION FEES AND SERVICE CHARGE	6
SERVICE POLICY	6
DRYDEN WASTEWATER SYSTEM	7
RESIDENTIAL AND COMMERCIAL SERVICE	7
ADDITIONAL UNIT	7
CONNECTION FEES AND SERVICE CHARGE	7
SERVICE POLICY	7
PESHASTIN WASTEWATER SYSTEM	8
RESIDENTIAL, INSTITUTIONAL 1, INSTITUTIONAL 3, COMMERCIAL 1, COMMERCIAL 2, AND INDUSTRIAL SERVICE	8
CONNECTION FEES AND SERVICE CHARGE	8
SERVICE POLICY	8
RESOLUTION HISTORY	9

RATE DISCOUNT FOR RESIDENTIAL WASTEWATER SERVICE

A rate discount not to exceed \$7.50 per month is available to all qualifying low-income seniors 62 years and older and low-income disabled as provided for in State of Washington R.C.W. 74.38.070. The rate discount will not exceed the amount of the monthly bill up to \$7.50 per month and will be applied to one residential wastewater account only.

QUALIFYING CRITERIA FOR LOW-INCOME SENIORS

1. Age 62 years or older prior to or during the month in which the discount is to apply.
2. Total household income including his or her spouse or co-tenant does not exceed the amount specified in R.C.W. 84.36.381 (5)(b).
3. Ownership or occupancy as head of household residing therein at certain property being provided wastewater service within the District's service area.

LOW-INCOME DISABLED

1. Physical disability prior to application.
2. Special parking privileges as defined in State of Washington R.C.W. 46.16.381 (1)(a) through (f) or a blind person as defined in R.C.W. 74.18.020.
3. Household income does not exceed 125% of Federal Poverty Income Guidelines.
4. Ownership or occupancy as head of household residing therein at certain property being provided wastewater service within the District's service area.

LAKE WENATCHEE WASTEWATER SYSTEM

RESIDENTIAL USERS AND SMALL GENERAL SERVICE

Residential users will be charged a flat rate for each single family residence. Duplexes, apartments, and small general services will be charged based on the total number of equivalent residential unit (ERU). (One ERU will be considered to have a flow of 250 gpd and strength not to exceed 250 mg/l BOD and TSS).

MEDIUM AND LARGE GENERAL SERVICE

The general service users will be charged based on actual metered use of the wastewater system. The metered usage will be obtained either by a wastewater meter, when one is installed, or by the metered water usage. The user contribution shall be based on both volume and strength of the wastewater discharged into the system.

RESIDENTIAL

RATE SCHEDULES 783

Basic Monthly Charge

Residential	\$ 58.30 per ERU
--------------------	-------------------------

SMALL GENERAL SERVICE

RATE SCHEDULES 785:

Basic Monthly Charge

Small General Service	\$ 58.30 per ERU
------------------------------	-------------------------

For each additional STEP tank:

1,000 gallon tank	\$11.65 per month
1,250 gallon tank	\$14.60 per month
1,500 gallon tank	\$17.55 per month
3,000 gallon tank	\$35.05 per month
6,000 gallon tank	\$70.05 per month

Exhibit A
Wastewater Rate Schedules

MEDIUM GENERAL SERVICE

RATE SCHEDULES 786

	Basic Monthly Charge (up to 20,000 gallons)	Quantity Rate (over 20,000)
Medium General Service	\$ 341.25	\$16.28 per 1,000 gallons

For each additional STEP tank:

1,000 gallon tank	\$11.65 per month
1,250 gallon tank	\$14.60 per month
1,500 gallon tank	\$17.55 per month
3,000 gallon tank	\$35.05 per month
6,000 gallon tank	\$70.05 per month

LARGE GENERAL SERVICE

RATE SCHEDULES 787

	Basic Monthly Charge	Quantity Rate
Large General Service- USFS Complex	\$ 514.50	\$16.28 per 1,000 gallons

For each additional STEP tank:

1,000 gallon tank	\$11.65 per month
1,250 gallon tank	\$14.60 per month
1,500 gallon tank	\$17.55 per month
3,000 gallon tank	\$35.05 per month
6,000 gallon tank	\$70.05 per month

SEPTIC SERVICE

RATE SCHEDULES 788

	Basic Monthly Charge	Quantity Rate
Septic Service- State Park Holding Tank ~ RV Dump Station	\$ 514.50	\$32.55 per 1,000 gallons

Exhibit A
Wastewater Rate Schedules

ADDITIONAL UNITS

\$36.75 per month for each additional unit.

CONNECTION FEES AND SERVICE CHARGE

Connection fees and service charges are as stipulated in the District's Fees and Charges.

SERVICE POLICY

Service under this Schedule is subject to the rules and regulations as defined in the District Utility Service Regulations.

DRYDEN WASTEWATER SYSTEM

RESIDENTIAL USERS

Residential users will be charged a flat rate for each single family residence. Duplexes and apartments will be charged based on the total number of equivalent residential unit (ERU). (One ERU will be considered to have a flow of 250 gpd and strength not to exceed 250 mg/l BOD and TSS).

COMMERCIAL USERS

The commercial users will be charged a flat rate per unit. The District will determine the unit quantity for each commercial user. The unit quantity will be considered to be in direct proportion to the increase in flow and strength of the wastewater (no reduction for lower strength wastewater will be allowed).

RESIDENTIAL AND COMMERCIAL SERVICE

RATE SCHEDULES 71 AND 72

<u>Basic Monthly Charge</u>	
Residential	\$ 58.30 per ERU
Commercial	\$ 58.30 per ERU

ADDITIONAL UNIT

\$36.75 per month for each additional unit.

CONNECTION FEES AND SERVICE CHARGE

Connection fees and service charges are as stipulated in the District's Fees and Charges.

SERVICE POLICY

Service under this Schedule is subject to the rules and regulations as defined in the District Utility Service Regulations.

PESHASTIN WASTEWATER SYSTEM

RESIDENTIAL USERS

Residential users will be charged a flat rate for each single family residence. Duplexes and apartments will be charged based on the total number of equivalent residential unit (ERU). (One ERU will be considered to have a flow of 250 gpd and strength not to exceed 250 mg/l BOD and TSS).

INSTITUTIONAL 3 AND COMMERCIAL 2 USERS

These users will be charged a flat rate per unit. The District will determine the unit quantity for each user. The unit quantity will be considered to be in direct proportion to the increase in flow and strength of the wastewater (no reduction for lower strength wastewater will be allowed).

INSTITUTIONAL 1, COMMERCIAL 1 AND INDUSTRIAL USERS

These users will be charged based on actual metered use of the wastewater system. The metered usage will be obtained either by a wastewater meter, when one is installed, or by the metered water usage. The user contribution shall be based on both volume and strength of the wastewater discharged into the system.

RESIDENTIAL, INSTITUTIONAL 1, INSTITUTIONAL 3, COMMERCIAL 1, COMMERCIAL 2, AND INDUSTRIAL SERVICE

RATE SCHEDULES 792, 793, 795, 796, 797, AND 798

	Basic Monthly Charge	Quantity Rate
Residential	\$ 58.30 per ERU	
Institutional 1	\$561.75	\$2.21 per 1,000 gallons
Institutional 3	\$ 58.30 per ERU	
Commercial 1	\$121.80	\$2.21 per 1,000 gallons
Commercial 2	\$ 88.20 per ERU	
Industrial	\$777.00	\$2.21 per 1,000 gallons

CONNECTION FEES AND SERVICE CHARGE

Connection fees and service charges are as stipulated in the District's Fees and Charges.

SERVICE POLICY

Service under this schedule is subject to the rules and regulations as defined in the District Utility Service Regulations.

RESOLUTION HISTORY

PUBLIC UTILITY DISTRICT NO. 1 OF CHELAN COUNTY

WASTEWATER RATE SCHEDULES

Resolution No. 90-8582	February 26, 1990	Olds Station System
Resolution No. 91-9122	January 1, 1992	Dryden System
Resolution No. 93-9579	May 1, 1993	Dryden System
Resolution No. 93-9702	September 1, 1993	Lake Wenatchee System
Resolution No. 93-9706	October 1, 1993	Olds Station System
Resolution No. 96-10381	February 1, 1996	Dryden, Lake Wenatchee, Olds Station
Resolution No. 98-10970	March 30, 1998	Dryden, Lake Wenatchee, Olds Station
Resolution No. 98-11060	September 15, 1998	All Systems
Resolution No. 99-11350	December 20, 1999	All Systems
Resolution No. 00-11626	December 4, 2000	All Systems
Resolution No. 02-12057	April 1, 2002	All Systems
Resolution No. 03-12467	December 8, 2003	All Systems
Resolution No. 07-13162	September 10, 2007	All Systems
Resolution No. 08-13395	October 27, 2008	All Systems

Exhibit A
Fees and Charges

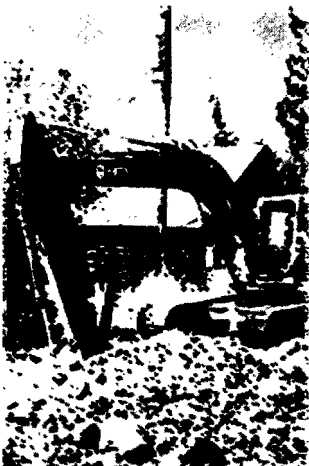


TABLE OF CONTENTS

SECTION	PAGE
TABLE OF CONTENTS	2
DELEGATED AUTHORITY	3
ELECTRICAL FEES AND CHARGES	4
<i>SERVICE CONNECTION FEES</i>	4
<i>WIRE INSTALLATION CHARGES</i>	4
<i>OTHER SERVICE CHARGES</i>	4
ENGINEERING FEES	5
WATER SYSTEM FEES & CHARGES	6
<i>LINE EXTENSION FEES</i>	6
<i>CHAMBER AND METER FEE</i>	7
<i>OTHER WATER FEES</i>	7
<i>SYSTEM DEVELOPMENT CHARGES (SDCs)</i>	7
<i>PRIVATE HYDRANT AND FIRE SPRINKLER SERVICE INSTALLATION FEES</i>	8
<i>FIRE HYDRANT CHARGE</i>	8
<i>FIRE HYDRANT VALVE USAGE CHARGES</i>	9
<i>CONNECTION CHARGE IN LIEU OF ASSESSMENT</i>	10
WASTEWATER SYSTEM FEES AND CHARGES	11
<i>WASTEWATER SYSTEMS DEVELOPMENT CHARGES (SDCs)</i>	11
<i>STEP TANK FEE</i>	11
UTILITY SERVICE REGULATIONS FEES	12
REGULATORY REQUIRED FEES	12

DELEGATED AUTHORITY

The following policy section identifies District policies that are subject to changes by the General Manager of Chelan County Public Utility District. Per Resolution 07-13163, dated September 10, 2007, the Board of Commissioners has authorized the General Manager to establish and administer the Electric, Water, Wastewater and Network Line Extension Fees and Charges.

Utilizing sound and reasonable business practices, all Utility Line Extension, Facilities Conversion policies and Utility Service Regulations fees are designed to provide a fair and consistent method for providing Utility Services while adequately recovering costs. As new methods are developed and costs change the District will adjust fees. Normal practice will be to analyze and project any cost adjustments during the District's annual budget cycle, however changes may be made on an as needed basis. In addition, this section identifies other one-time service fees that the General Manager may adjust as costs and application methods change.

Any proposed changes will be communicated to the Board of Commissioners during open session. In addition changes that may impact identified groups or stakeholders will be communicated at the earliest possible opportunity.

ELECTRICAL FEES AND CHARGES

SERVICE CONNECTION FEES

SERVICE RATING	CONNECTION TYPE AND FEE (EXISTING)		
COMMERCIAL AND RESIDENTIAL	120/240v or 120/208v single phase	120/240v or 120/208v three phase	277/480v three phase
1-100A	\$ 700	\$ 1,400	\$ 2,100
101-200A	\$ 1,300	\$ 2,800	\$ 4,100
201-400A	\$ 2,600	\$ 5,600	\$ 8,200
401-600A	\$ 3,900	\$ 8,400	\$ 12,300
601-800A	\$ 5,200	\$ 11,200	\$ 16,400
801-1000A	\$ 6,500	\$ 14,000	\$ 20,500
1001 AND OVER	Time and Material (See Engineering)		

Notes:

1. Service Connection Fee includes transformer, meter, materials and install labor
2. Material includes CT's, terminal blocks, cutouts, jumpers and other misc parts
3. 120/240 volt 4 wire three phase (3Ø) connections are non-standard and require engineering approval. Additional information regarding service requirements can be found in the Utility Service Regulations, Section 30.

WIRE INSTALLATION CHARGES

Wire Length	0-75ft	76-150ft
Underground Wire (single phase)	\$ 350	\$ 500
Overhead Wire (single phase)	\$ 200	\$ 300
Underground Wire (three phase)		\$ 650
Overhead Wire (three phase)		\$ 450

Notes:

1. Wire charges are based on average installation type
2. Underground wire charges includes riser if applicable

OTHER SERVICE CHARGES

Installed secondary handhole	\$440
Installed secondary handhole, traffic rated	\$940
Secondary service pole	\$650
Altered service (misc changes and upgrades)	\$250
Secondary handhole (material only)	\$250
Secondary handhole, traffic rated (material only)	\$750

Exhibit A
Fees and Charges

ENGINEERING FEES

Engineering fees depend upon the type of project involved. Fees are as follows:

Single phase residential line extension to single residence	\$200
Agricultural – wind machines, irrigation pumps, shops	\$200
Short Plats, Developments, Commercial lots and all others	\$450
Facility Modification on single lot and on private property	\$200
Facility Modification on multi-lots or on public right of way	\$450

Note:

1. Additional information regarding Engineering Fees is listed in the Utility Services Policies, under Electric Line Extension Policy, Engineering Fees.

ELECTRICAL REQUIREMENTS

1. The customer shall pay all costs and fees in advance, including, but not limited to the cost of permits, easements, clearing and any other special costs to provide service. These costs and fees will be in addition to any line extension or other costs that may be required and are not reimbursable.
2. There shall be a fee for all overhead secondary services, which shall include up to 150 feet of conductor (wire). The measurement shall be from the transformer location.
3. For underground facilities, the Residential Customers has the option to (1) provide District approved service conductor and have it installed by their licensed Electrical Contractor or, (2) have the District supply and install the service conductor, up to 150 feet, for the fee set forth above. For overhead and underground, the measurement shall be from the transformer location. All other customer classes will supply and install the secondary service conductor per District Electrical Service Requirements.
4. There shall be a service connection fee for one (1) permanent service connections and (2) capacity additions to existing service. The fee will be determined by the service rating consistent with Labor and Industries. This fee will not apply to temporary service installations.
5. For unusual situations, the service connection shall be the estimate of all transformers, labor, materials and metering the District supplies.

WATER SYSTEM FEES & CHARGES

LINE EXTENSION FEES

Item	Description of District Work	Description of Applicant Work	Fees
Plan Review	District review of engineering drawings for conformance to District standards. Submittal review for construction.	Provide drawings to District standards depicting all water system(s).	\$350 per Project
Easement(s)	District drafting of utility easement(s) for water system(s) outside of right of way.	Provide drawings to District standards depicting water system(s) in utility easement(s).	\$150 per easement
Construction Inspection	District inspection during construction for conformance to District standards.	Provide access to all construction activities for District inspection.	\$1000 per Project
Health Test(s)	District performance of health test(s) for water system.	Provide Temporary Flushing/Sampling and Blowoff Assembly and manpower for health test(s).	\$100 per Test
Pressure Test(s)	District observation and assistance of pressure test(s) for water system.	Provide pressure testing equipment and manpower for pressure test(s).	\$280 per Test
Mainline Connection(s)	District performance of connection(s) to existing water system(s).	Provide all materials, excavation, and restoration necessary to perform connection(s) according to District standards.	\$750 per Connection
Service Connection(s)	District performance of connection(s) to existing water system(s).	Provide all materials, excavation, and restoration necessary to perform connection(s) according to District standards.	\$420 per Connection
Hydrant Connection(s)	District performance of connection(s) to existing water system(s).	Provide all materials, excavation, and restoration necessary to perform connection(s) according to District standards.	\$1,470 per Connection

Note:

1. All Line Extensions must be in compliance with the District's Water and Wastewater System Line Extension Policy.

Exhibit A
Fees and Charges

CHAMBER AND METER FEE

Domestic Water Meter Size	Chamber and Meter Fee	Meter Fee
5/8"	\$3,360	\$390
1"	\$3,420	\$440
1 1/2"	\$4,230	\$550
2"	\$4,620	\$720
Above 2" turbine or compound*	T&M	T&M

Notes:

1. The Chamber and Meter Fee shall be paid when (1) the District must install a new chamber to serve the property, or (2) the District or District's Contractor previously installed the Chamber designated to serve the property.
2. The Meter Fee shall be paid for installations where a chamber has been previously installed in accordance with District requirements to serve the property (such as subdivisions and other property developments), and the District did not pay the costs of the installation.
3. When an applicant requests two meter services (size 5/8" and 1" meter only) and the District determines both services can be installed in one meter chamber, the applicant shall pay (1) Chamber and Meter Fee and (1) Meter Fee.
4. Costs for installation of 2" and larger turbine and compound meters shall be determined on a cost recovery basis, please contact the Water Department Engineer for the proper Chamber and Meter fee.
5. Additional costs will be charged for unforeseen conditions or complex installations requiring extraordinary labor, equipment, or materials.
6. In addition to Chamber and meter fees, customers will be required to pay a System Development Charge (SDC).

OTHER WATER FEES

Maintenance Bond Fee	10% of the value of the work
Performance Bond for uncompleted Work	150% of the value of the estimated costs to complete the work
Fire hydrant flow test	\$250 (Per test)

SYSTEM DEVELOPMENT CHARGES (SDCs)

System Development Charges (SDCs) for the water system are determined for an equivalent residential unit (ERU). Unless specifically provided for other wise, SDCs for connections involving more than one ERU are weighted by multiplying by a weighing factor based on AWWA safe operating capacity for displacement-type meters. SDCs shall be paid prior to connection.

Exhibit A
Fees and Charges

The SDCs for the water systems are as follows:

SYSTEMS				
Meter size	AWWA factor	WENATCHEE Cost	SQUILCHUCK Cost	CHELAN FALLS Cost
5/8"	1	\$2,372	\$2,995	\$2,950
1"	2.5	\$5,930	\$7,448	\$7,375
1 1/2"	5	\$11,859	\$14,977	\$14,750
2"	8	\$18,975	\$23,963	\$23,600
3"	15	\$35,580	\$44,925	\$44,250
4"	25	\$59,300	\$74,875	\$73,750
6"	50	\$118,600	\$149,750	\$147,500
8"	80	\$189,760	\$239,600	\$236,000
10"	115	\$272,780	\$344,425	\$339,250

Notes:

1. In addition to SDCs the customer will be required to pay applicable chamber and meter fees.
2. Ollala Canyon Water System has no System Development Charges (SDCs) as there are only 30 connections allowed for the system and all were accounted for by the LUD.
3. Chelan Ridge Water System has no System Development Charges (SDCs) for properties within the system (Chelan Ridge Development, Division 1 & 11, lots 1 through 41, as shown in Exhibit C of the agreement with Azure Corporation). Properties outside the original system shall pay the 1" SDC charge based on the Wenatchee System cost. All new customers will be required to pay the Meter and Chamber Installation Fees in effect at the time they connect to the system. Existing customers who already have meters will not be assessed a Meter Fee. All meters in the development are one (1) inch.

PRIVATE HYDRANT AND FIRE SPRINKLER SERVICE INSTALLATION FEES

All costs for the installation of a private hydrant and/or sprinkler system service will be charged on a time and expense basis and will be paid for by the owner of said system.

A monthly charge will apply. See Water Rate Schedules.

FIRE HYDRANT CHARGE

DISTRICT INSTALLED: High Pressure Hydrant: \$4,600

If distance from water main to fire hydrant is over 18', charges will be based on actual time and expense.

If distance is over 60' from the water main to the fire hydrant, a water line extension agreement will be required. Line size will be determined by the District.

UNAUTHORIZED CONNECTIONS TO FIRE HYDRANTS:

Unauthorized connections to the water system are covered in the District's Water and Wastewater Service Regulations, Section 52. This regulation allows for a minimum charge, plus consumption and investigative costs for an unauthorized connection. An individual or company that is found to be connected to the District's water systems through an unauthorized fire hydrant connection will be assessed the charge, plus consumption and investigative costs, for the first offense.

Exhibit A
Fees and Charges

FIRE HYDRANT VALVE USAGE CHARGES

All Water Systems:	District Owned	Customer Owned
Deposit Subject to Credit Approval	\$1,200.00 ¹	- 0 -
Purchase Amount	- 0 -	Actual Cost
Installation and Removal	\$ 60.00	\$60.00
Annual Inspection and Test Charge	- 0 -	Actual Cost

Notes:

1. Deposit will be collected only if customer's credit history is unsatisfactory. All deposits collected will be returned if hydrant valve is returned undamaged. Any customer who is not required to pay a deposit will be billed for all costs to repair or replace a damaged hydrant valve.
2. Water consumption will be charged at the Quantity rate charged for the system it is used on. See Water Rates Schedules.
3. Fire hydrant valves will be available to be used for a period of not more than thirty (30) days. If required beyond thirty (30) days, fire hydrant valve use will be reviewed for applicability by the District.
4. Fire hydrant valves will not be installed under conditions which subject the assembly to freezing temperatures that may result in damage to the unit.

Exhibit A Fees and Charges

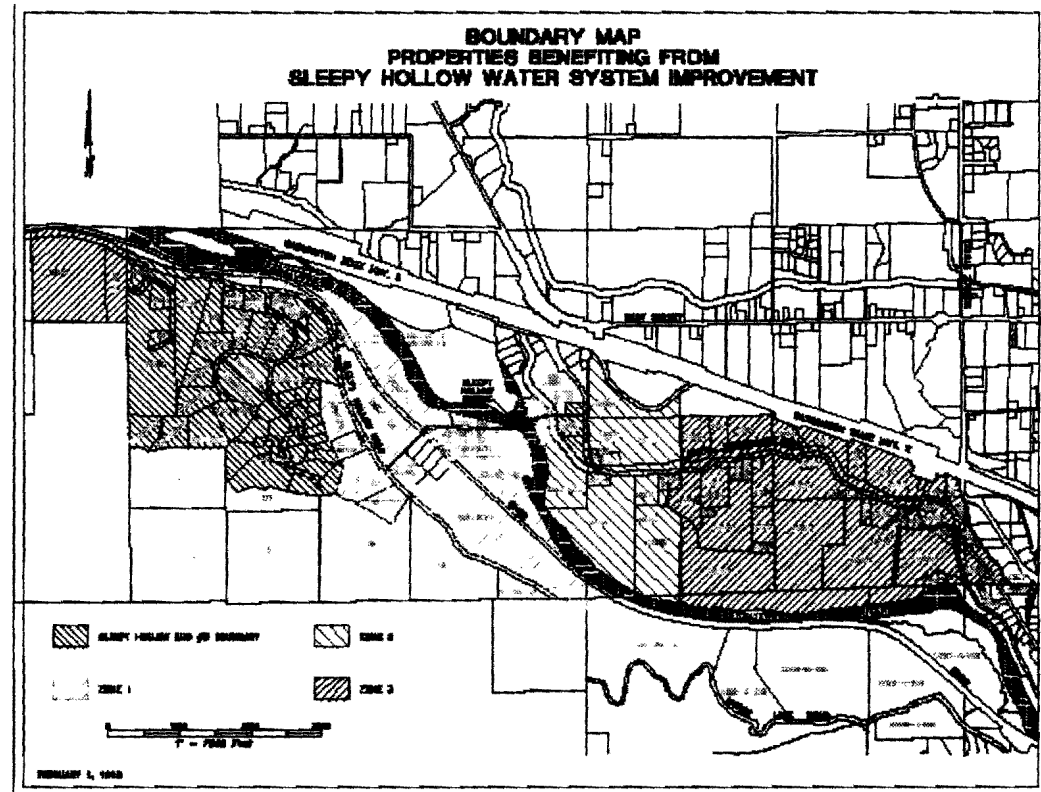
CONNECTION CHARGE IN LIEU OF ASSESSMENT

Areas benefitting from sleepy hollow water system improvement

YEAR	ZONE 1	ZONE 2	ZONE 3	YEAR	ZONE 1	ZONE 2	ZONE 3
1997	\$7,613	\$7,107	\$2,636	2013	\$15,531	\$14,498	\$5,377
1998	\$8,108	\$7,569	\$2,807	2014	\$16,025	\$14,960	\$5,549
1999	\$8,603	\$8,031	\$2,979	2015	\$16,520	\$15,422	\$5,720
2000	\$9,098	\$8,493	\$3,150	2016	\$17,015	\$15,884	\$5,891
2001	\$9,592	\$8,955	\$3,321	2017	\$17,510	\$16,346	\$6,063
2002	\$10,087	\$9,417	\$3,493	2018	\$18,005	\$16,808	\$6,234
2003	\$10,582	\$9,879	\$3,664	2019	\$18,500	\$17,270	\$6,405
2004	\$11,077	\$10,341	\$3,835	2020	\$18,994	\$17,732	\$6,577
2005	\$11,572	\$10,803	\$4,007	2021	\$19,489	\$18,194	\$6,748
2006	\$12,067	\$11,265	\$4,178	2022	\$19,984	\$18,656	\$6,920
2007	\$12,561	\$11,727	\$4,349	2023	\$20,479	\$19,118	\$7,091
2008	\$13,056	\$12,189	\$4,521	2024	\$20,974	\$19,580	\$7,262
2009	\$13,551	\$12,650	\$4,692	2025	\$21,469	\$20,042	\$7,434
2010	\$14,046	\$13,112	\$4,863	2026	\$21,964	\$20,504	\$7,605
2011	\$14,541	\$13,574	\$5,035	2027	\$22,458	\$20,966	\$7,776
2012	\$15,036	\$14,036	\$5,206				

Fee is per connection, not per parcel

Interest Rate = 6.5%



WASTEWATER SYSTEM FEES AND CHARGES

WASTEWATER SYSTEMS DEVELOPMENT CHARGES (SDCs)

System development charges (SDCs) for the wastewater systems are determined based on the volume and composition of wastewater discharged compared to that of a typical equivalent residential unit (ERU). Unless specifically provided for otherwise, SDCs for connections involving more than one ERU are weighted according to the ERUs calculated for the service at the new connection. An ERU shall be defined as 250 gallons per day, not exceeding any pollutant concentrations for high strength wastewater set forth in Section 78F of the Utility Service Regulations.

Each single family or duplex living unit shall be defined as one ERU. Each residential unit in a multifamily structure with three or more residential units shall be considered 0.8 ERU (Dryden system) and one ERU (Peshastin and Lake Wenatchee systems) ERU equivalencies for any other connection will be determined by the District using the following formula:

$$(\text{flow in gpd} / 250\text{gpd}) \times [0.38 + 0.387 \times (\text{BOD in ppm} / 250\text{ppm}) + 0.233 \times (\text{TSS in ppm} / 250\text{ppm})] = 1 \text{ ERU}$$

The minimum SDC per connection shall be based on one ERU.

System development charges shall be paid prior to connection. The SDCs for each ERU are as follows:

Wastewater System	SDCs per ERU
Dryden (b)	\$ 4,343
Lake Wenatchee/Peshastin	\$ 4,796

Note:

1. Lake Wenatchee LUD #4 and Peshastin LUD #7 customers that did not originally sign up for a Part B connection to the system and now connect shall pay the above fee per Equivalent Residential Unit (ERU).

STEP TANK FEE

Wastewater System	Cost
Lake Wenatchee/Peshastin	\$ 11,600

Note:

1. Includes septic tank effluent pump (STEP) system (maximum 1,500 gallon size). Where wastewater amounts require a larger tank, the STEP tank fee shall be determined by the District on a cost-reimbursement basis. This is a shared cost fee that each connection shall pay even though more than one connection may be made to a single STEP tank.

Exhibit A
Fees and Charges

UTILITY SERVICE REGULATIONS FEES

Utility Service Regulations Section	Item	Fee
7a	Landlord 72 hour service fee: <ul style="list-style-type: none"> ▪ Notifying the tenant ▪ Fee to disconnect electric service ▪ Fee to reconnect 	\$35 each
8B	Security deposit minimum	\$100
10C	Late payment charge	5% on unpaid balance
10D7	Collection fee	\$35
13A	Account service charge	\$15
13B	Seasonal disconnect/reconnection charge	\$35
13B	Remote disconnect/reconnect device	tbd
13C	After hours connection charge	\$175
13D	Reconnection charge	\$35
13D	Unauthorized electric connection	\$75
13E	Returned check charge	\$15
20	Meter test fee – electric	\$25
20	Meter test fee - water	\$85
52	Unauthorized water/wastewater connection	\$100

REGULATORY REQUIRED FEES

Item	Fee
Pole Contact fee (per pole, per year)	\$11.80