

Substation Siting

Community Engagement Update

September 20, 2016

Chad Rissman & Andy Wendell



Overview

- Status update for Chelan and Leavenworth projects
- Continue to work through the process in both locations
- Public input is active and feedback is being incorporated into next steps
- Planned actions and timeline
- Staff recommending to continue down the identified path in both Leavenworth and Chelan
- Seeking Board decision on our defined process moving forward

The Process

Deliverable:

- Respond to growth in Leavenworth and Chelan
- Provide reliable electric service for existing load and future growth
- Provide ~ three options for new substation sites in Leavenworth and Chelan to PUD Commissioners for consideration

Major milestones:

- Engage with a community focus group
- Seek additional input from the community groups
- Develop a foundation for decisions on site selection criteria
- Listened to and communicated with stakeholders and the community
- Narrowed to approximately (3) areas → parcels → sites
 - 3 in Leavenworth (currently)
 - 2 in Chelan (currently) – pursuing others

Current status in Leavenworth:

- Consultant assisting in performing high-level analysis on three sites
- Next community/stakeholder meeting scheduled in November

Current status in Chelan:

- For this phase - public comment period ended September 9th
- Using public comment to adjust consultant's scope of work and deliverable
- Next community/stakeholder meeting scheduled in November

Summary of Leavenworth Engagement

- 2013 – PUD identified need for substation
- 2014 – PUD performed engineering analysis
- 2015 – Community engagement efforts began
- Dec. 8, 2015 – Community meeting
- Jan. 25, 2016 – Focus group mtg. No. 1
- Feb. 25, 2016 – Focus group mtg. No. 2
- Mar. 28, 2016 – Email update to 80 residents
- Mar. 30, 2016 – Focus group mtg. No. 3
- May 19, 2016 – Focus group mtg. No. 4
- June 28, 2016 – Community meeting
- June 20, 2016 – Update to PUD Commissioners
- July 6, 2016 – Leavenworth Echo story
- Sept. 14, 2016 – Email update to 80 residents
- Sept. 20, 2016 – Update to PUD Commissioners
- *Between Dec. 2015 and July 2016 – numerous mentions on KOHO radio and during Manager’s Items at PUD Commission meetings*

Examples of public comments received:

- Concern about additional transmission needed for area 3 (*west end of town*)
- Want to know additional cost for underground distribution
- Minimum visual impact of overhead lines

Leavenworth

Upcoming scheduled meetings in 2016

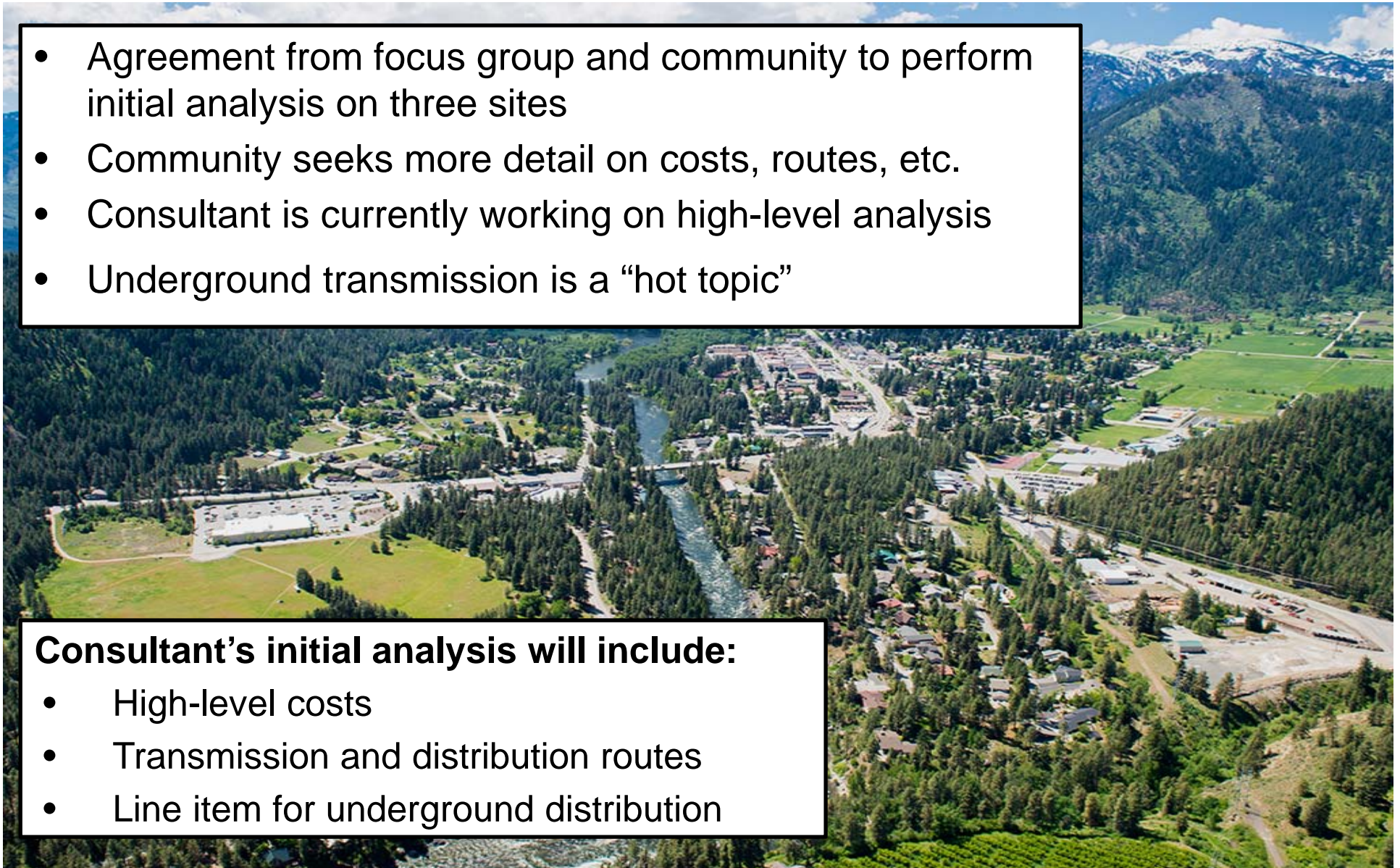
- **Oct. 4**
 - Residential Advisory Committee
- **Oct. 20**
 - Focus group meeting No. 5
- **Oct. 25**
 - City Council update
- **Nov. 2**
 - Community meeting

Leavenworth Substation Update

- Agreement from focus group and community to perform initial analysis on three sites
- Community seeks more detail on costs, routes, etc.
- Consultant is currently working on high-level analysis
- Underground transmission is a “hot topic”

Consultant’s initial analysis will include:

- High-level costs
- Transmission and distribution routes
- Line item for underground distribution



Summary of Chelan Engagement

- 2013 – PUD identified need for substation
- 2014 – PUD performed engineering analysis
- 2015 – Community engagement efforts
- July 7, 2015 – Letter to 400+ Chelan Hills res.
- July 10, 2015 – GoLakeChelan story
- Aug. 4, 2015 – Postcard to 4,500 residents
- Aug. 27, 2015 – Community meeting
- Sept. 1, 2015 – Letter to 400+ Chelan Hills res.
- Oct. 22, 2015 – Focus group mtg. No. 1
- Jan. 22, 2016 – Focus group mtg. No. 2
- Feb. 24, 2016 – Email update to 150 residents
- Mar. 1, 2016 – Focus group mtg. No. 3
- Apr. 20, 2016 – Focus group mtg. No. 4
- May 5, 2016 – Postcard to 6,300 residents
- May 5, 2016 – Email update to 150 residents
- May 24, 2016 – Community meeting
- May 25, 2016 – GoLakeChelan story
- June 20, 2016 – Update to PUD Commissioners
- June 14, 2016 – Letter to owners in “Top 3” areas
- July 20, 2016 – Email update to 150 residents
- Aug. 1, 2016 – Update to PUD Commissioners
- Aug. 1, 2016 – Postcard to 6,300 residents
- Aug. 2, 2016 – Email update to 150 residents
- Aug. 9, 2016 – Focus group mtg. No. 5
- Aug. 9, 2016 – Update to City Council
- Aug. 10, 2016 – GoLakeChelan story
- Aug. 15, 2016 – Wenatchee World story
- Aug. 17, 2016 – Email update to 150 residents
- Aug. 24, 2015 – Lake Chelan Mirror story
- Aug. 24, 2016 – Community meeting
- Aug. 25, 2016 – Wenatchee World story
- Aug. 31, 2016 – Lake Chelan Mirror story
- Sept. 6, 2016 – Letter to neighbors of two sites
- Sept. 14, 2016 – Email update to 150 residents
- Sept. 20, 2016 – Update to PUD Commissioners
- *Between Aug. 2015 and Sept. 2016 – numerous interviews and mentions on KOZI radio, KPQ radio, and during Manager’s Items at PUD Commission meetings*

August 24th community meeting outcomes:

- Understanding of the site selection process
- Informed community of next steps and timeline
- Public comment received – mostly related to Franzen Orchard property, both negative and positive

Chelan Substation Update

- Two sites identified for further analysis
- Received public comment
- Public comment will be incorporated into consultant's analysis
- Continue to seek 3rd site option

Consultant's analysis will include:

- Routes options
- General costs
- Renderings & visuals
- Wildlife considerations
- Ground water review
- Environmental considerations
- Other as necessary

Examples of Public comment received in Chelan

- A substation should not be placed in a residential neighborhood
- Opposition to further analysis of the Franzen Orchard property area 9/10
- Environmental and wildlife impact concerns
- Support for substation located on Franzen Orchard property
- PUD Commissioners should be stewards of all rate-payers

Timeline & future update

CHELAN

Community Engagement

August

Community Engagement
Consultant's analysis begins

September

Consultant's analysis

October

Consultant's analysis complete

November

Community meeting & engagement
Present options to PUD Commissioners

December

Begin site acquisition

January
(forecasted)

LEAVENWORTH

Consultant's high-level analysis began

Consultant's high-level analysis

Consultant's high-level analysis complete
Community engagement

Community meeting & engagement

Consultant completes full analysis
Community meeting & engagement
Present options to PUD Commissioners

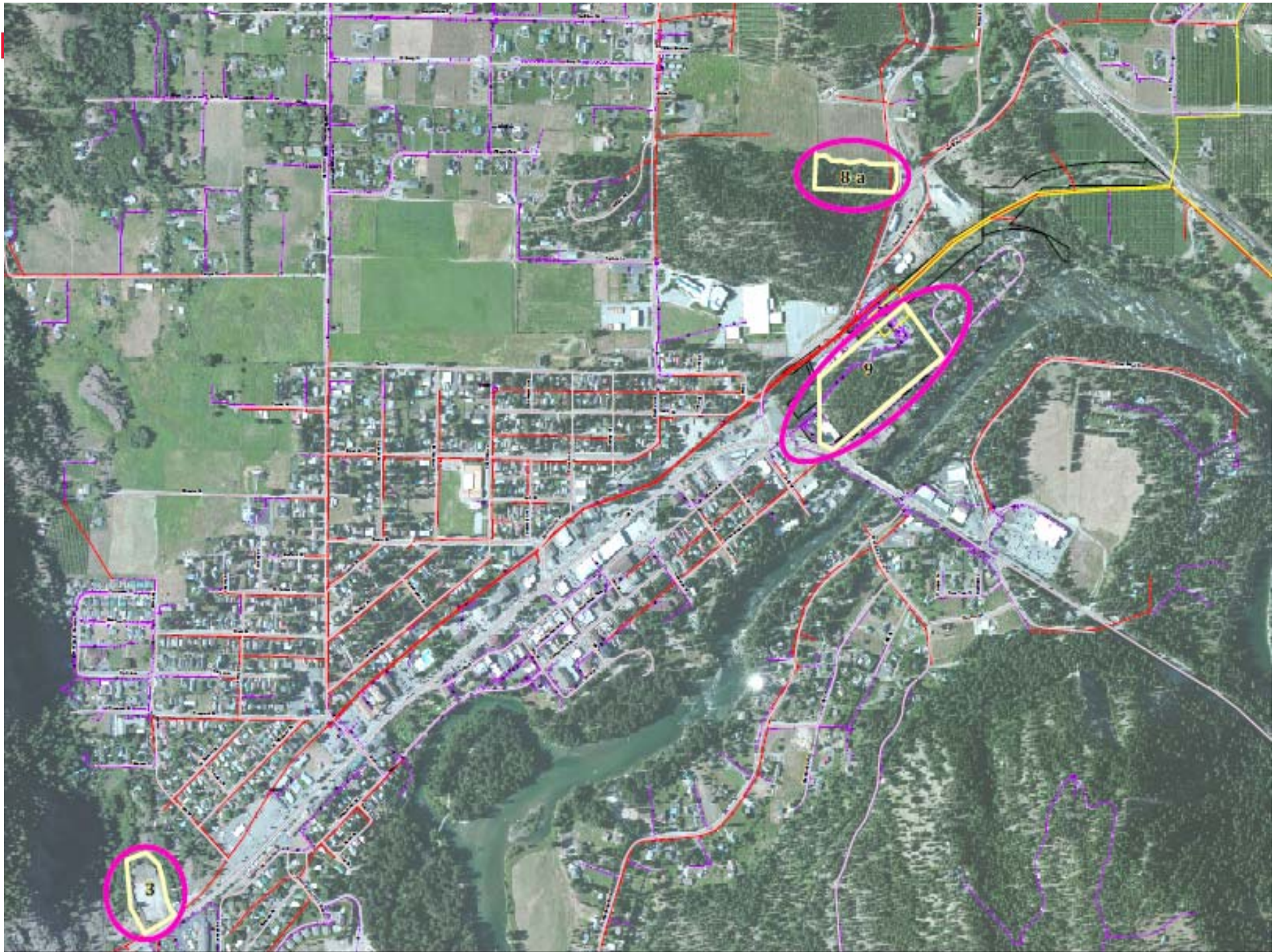
Begin site acquisition

Conclusion

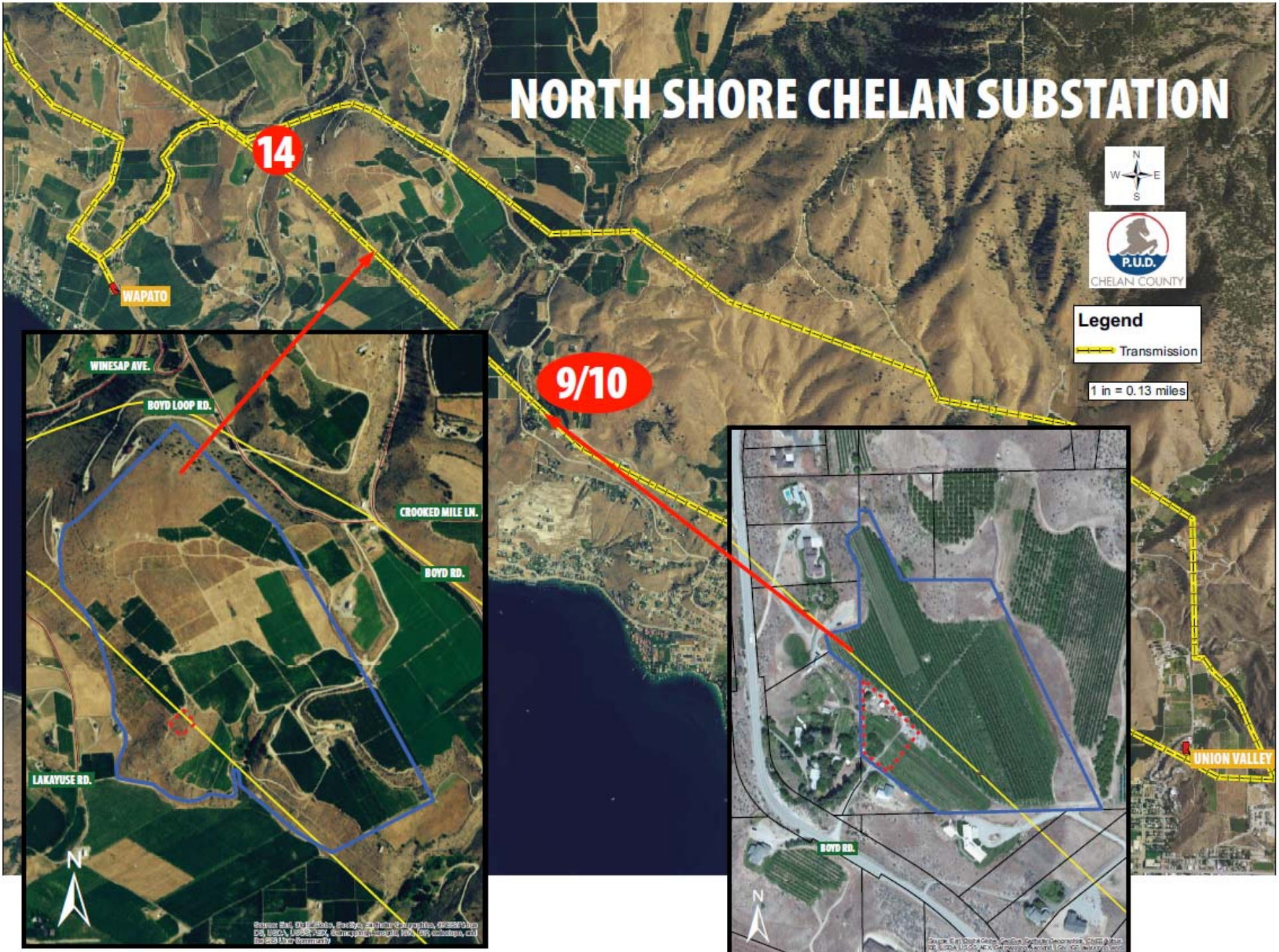
- On path for primary deliverable
- Leavenworth – 3 potential sites
- Received community feedback to incorporate into engineering analysis
- Chelan – 2 potential sites
- Actively seeking third site
- Moving forward with engineering analysis and incorporating community feedback
- Seeking Board decision today on next steps



Questions?



NORTH SHORE CHELAN SUBSTATION



Legend

Transmission

1 in = 0.13 miles



Source: Esri, DigitalGlobe, GeoEye, Earthstar Geographics, CNES/Airbus DS, USDA, USGS, AeroGRID, IGN, GE, CNES, and the US State Department



Source: Esri, DigitalGlobe, GeoEye, Earthstar Geographics, CNES/Airbus DS, USDA, USGS, AeroGRID, IGN, GE, CNES, and the US State Department