

Substation Siting Community Engagement Update

June 20th, 2016



CHELAN COUNTY
POWER

www.chelanpud.org

Overview

- PUD-Community Team building in Chelan and Leavenworth
- Outreach Planning Standard was the guide
- Good process – more work to do to successfully site the substations
- Two-way communication – each better understands needs and concerns

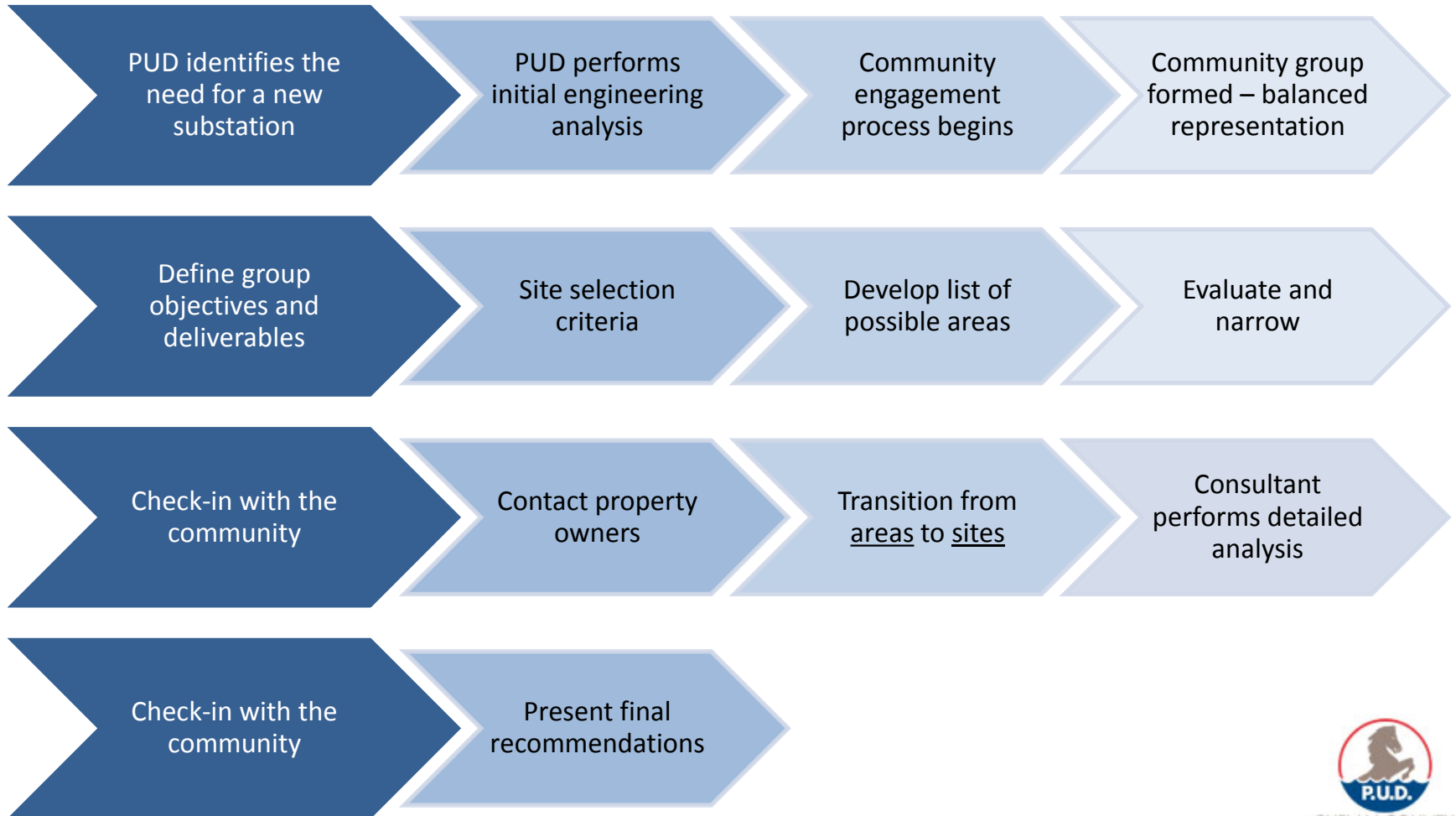


Outreach Planning

- Principles:
 - Transparency and openness
 - Inclusiveness
 - Accessibility and consistency
 - Responsiveness
- Collaboration
 - Multi-way engagement
 - Joint learning, decision making and action
 - Alliances, multi-stakeholder initiatives
- Utilizing the process to find a win-win
- The best for the most for the longest period of time

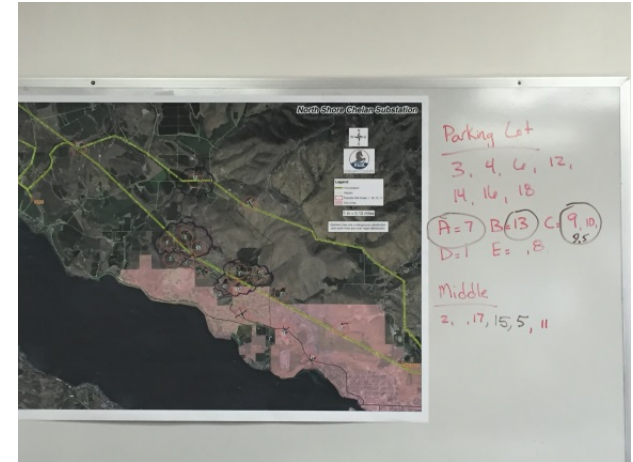


The Process



Deliverables




- **Site selection criteria**
 1. Statutory Requirements (*non-negotiables*)
 2. PUD Standards (*non-standard outside scope*)
 3. Site Variables (*focus group's ability to impact*)
 4. Design Variables (*neighbors ability to impact*)
- **Evaluation matrix**
- **Maps**
- **Lands fact sheet**
- **Detailed cost analysis and renderings**
- **Approx. 3 proposed options to Commissioners**




Status update


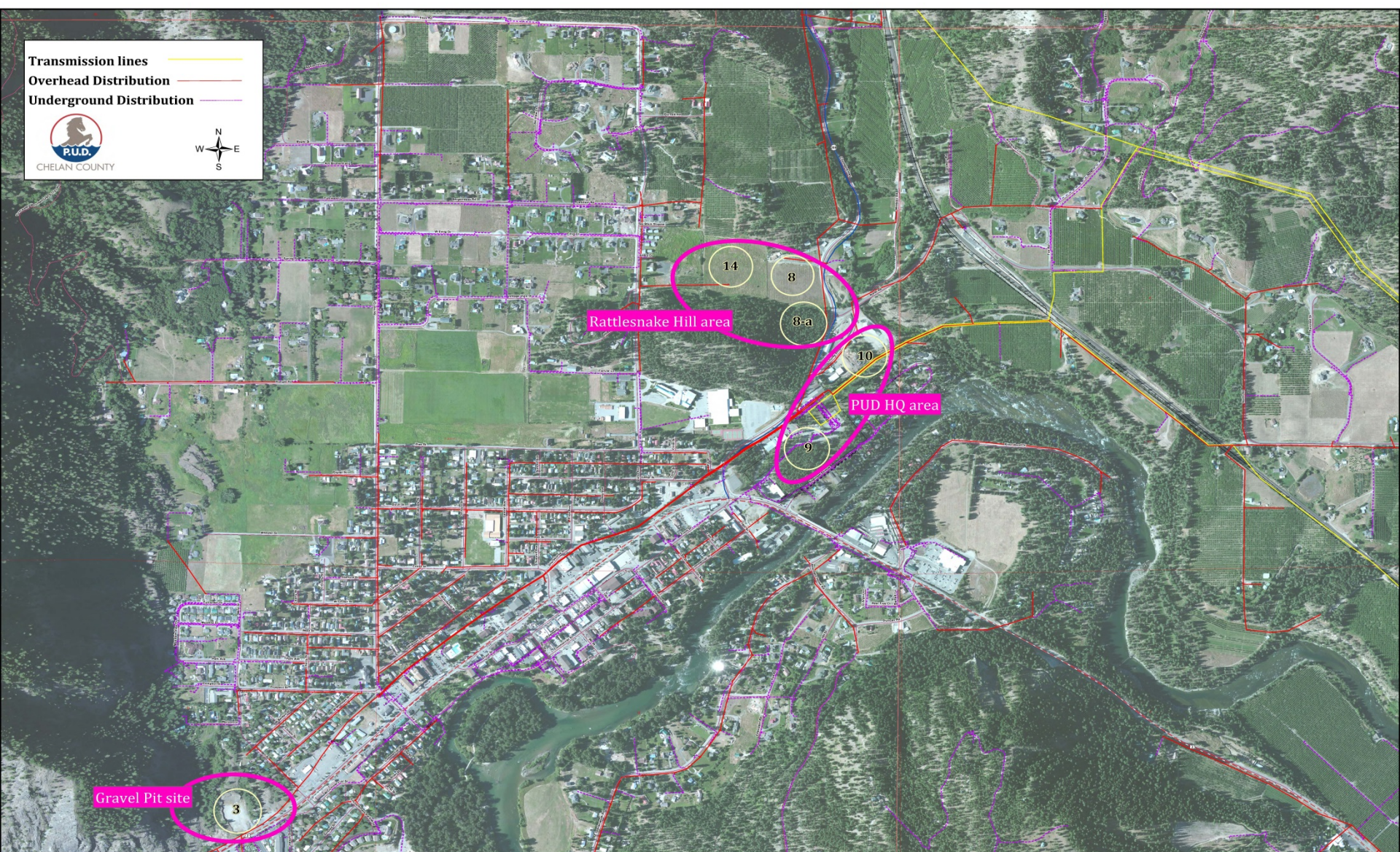
- Chelan community meeting – May 24th
- Leavenworth community meeting – June 28th
- Lands contacting all possible property owners in the “Top 3” areas
- Perform preliminary cost analysis
- Reapply site criteria
- Identify approximately 3 sites
- Check-in with the community
- Perform detailed cost analysis
- Present proposal to PUD Commission – Q416
- ❖ We will fully document the process and conduct a “Lessons Learned” review



Transmission lines 
Overhead Distribution 
Underground Distribution 



CHELAN COUNTY

Questions?