



CHELAN COUNTY

# DEVELOPING A ROADMAP

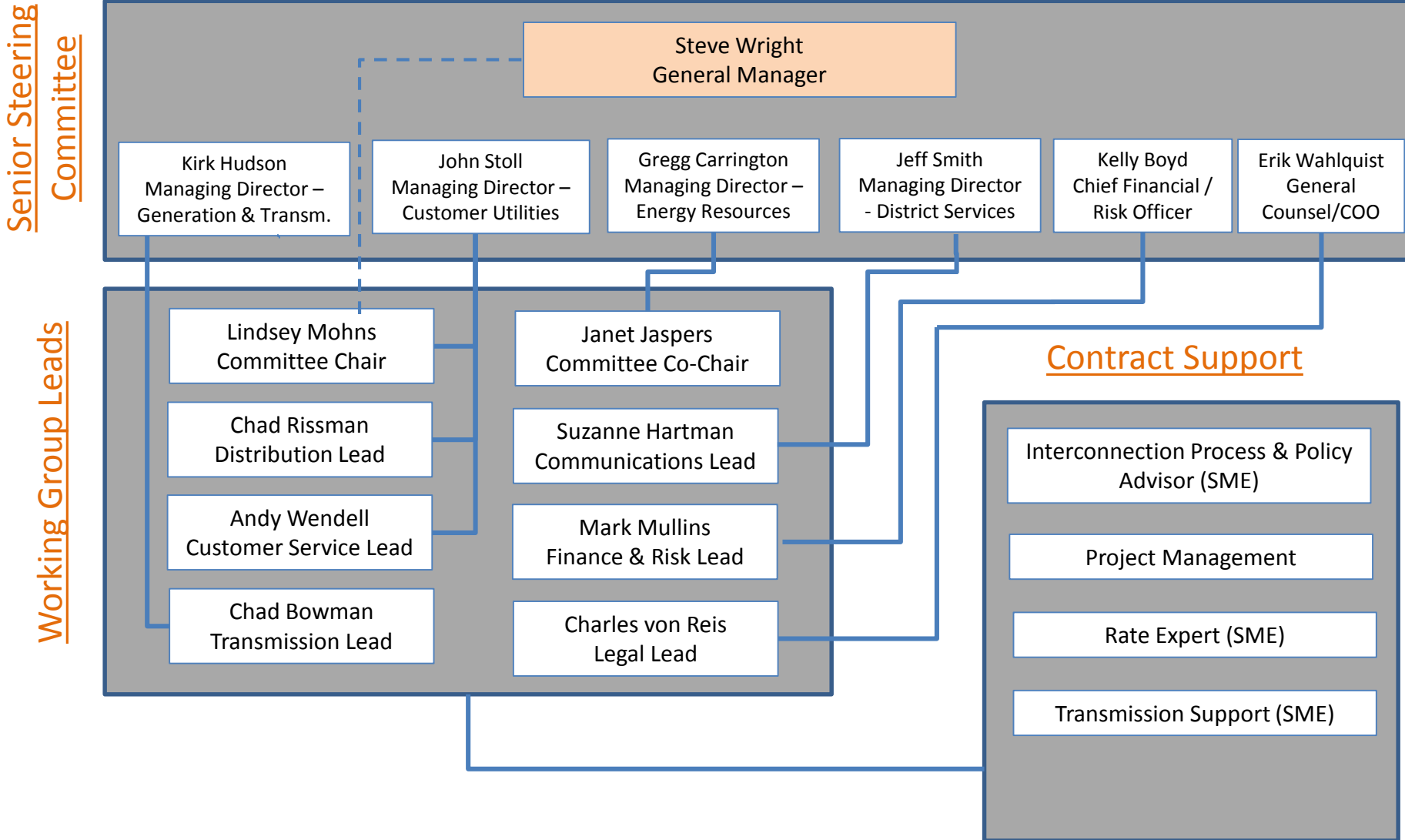
for loads greater than 5 MWs

March 5, 2018

# Today's Discussion

- Team Structure
- Contract Support
- Impacts to 2018 District Performance Plan Initiatives
- Outreach Efforts
- Next Steps

# Team Structure



# Contract Support

- Interconnection Process & Policy Advisor (SME)
  - Interconnection experience, lessons learned, critical path development, risk assessment
- Project Management
  - Schedule maintenance, roles & responsibilities, staff effort requirements, communication
- Rates Expert
  - Methodology review and advice
- Transmission Support
  - System impact and facility study

# Impact to 2018 District Performance Plan Initiatives

- 4.Q.1: Delay Long Term Hedge Authority Resolution
- 5.J.1-3: Forego process improvement to capital project attribute valuations and follow similar process as 2017
- 2.V.1: Delay the evaluation of hardening Chelan-Manson transmission line to protect against wildfire/weather
- Move some Individual Development Plans to “stretch goals” for those directly involved

# Impact to 2018 District Performance Plan Initiatives

- 2.K: Delay Transmission Asset Management Program Development
- 5.L: Delay development of the Purchasing & Contract Management bid workflow system upgrade
- Delay further work on the District-wide standardization of project management processes.

# Impact to 2018 District Performance Plan Initiatives

- 2.X.3: Delay progress on substation construction projects (Ohme, Leavenworth & Chelan)
- 5.H: Defer or minimize Business Continuity
- 2.L: Delay Elements of Customer Utilities Asset Management Program
- 1.A: Fiber Expansion Premises  
Passed: Potentially fewer premises passed

# Impact to 2018 District Performance Plan Initiatives

- 4.G.1: Delay Energy Imbalance Market Assessment to Q4
- 4.G.2: Delay new solar shaping product
- 4.Q: Delay Long Term Marketing plan
- 4.T.2-3: Delay two elements of the Customer Diversification project:
  - Identification and recruitment strategy
  - Stakeholder engagement plan



# Outreach Efforts

- Met with all municipals and the County
- Focus on County load growth
  - Organic growth
  - Updated them on the large load requests
  - Update on current High Density Load activity
  - Discussed impacts of residential HDL activity
- City of Wenatchee adopted interim controls
- City of Chelan enacted a moratorium

# Next Steps

- Finalize our management structure and onboard consultants
- Continue to communicate with large load requestors
- Collaborate with municipal and county governments as they enact new codes and ordinances
- Provide further Board and community updates as needed