

North Shore Chelan Substation Community Engagement Timeline Update

August 1st, 2016

Timeline overview

- **May 24, 2016** – Community Meeting
 - Presented Top 3 AREAS
 - Gathered input
 - Explained next steps
- **June 20, 2016** – Update to Commissioners
- **June 2016** – Contact will all property owners in Top 3 areas
- **June 2016** – Internal team check-in
 - No property owners in Area 13
 - 6 property owners within areas 7, 9/10, and 14
 - With focus group agreement, transitioned from Area 13 to 14
- **July 2016** – Lands and Engineering meet with interested property owners
 - Perform high-level engineering analysis on each parcel
 - Determine one viable site from each parcel within each of the Top 3 areas

External actives

Internal actives

Timeline overview cont.

External activities

Internal activities

- **August 1, 2016** – Update to Commissioners
- **August 9, 2016** – Chelan City Council update
- **August 24, 2016** – Chelan community meeting
 - Present three possible substation SITES
 - Gather input from the community
 - Explain next steps

Chelan and Manson-area customers:

You're invited to a community meeting about building a new substation between Chelan and Manson:

When: Wednesday, Aug. 24, 5:30–6:30 p.m.

Where: Chelan City Hall, 135 E. Johnson, Chelan



The PUD and some of your neighbors have been looking for a location for a new substation between Chelan and Manson. A substation is needed to support growth and development during the next decade. The last time a substation was built in the area was 1980.

In May, we met with several community members at a public meeting to talk about the top-rated areas of interest for locating the new substation. In June, PUD staff began contacting property owners and in July began meeting with property owners who expressed interest in selling property for the purpose of a substation.

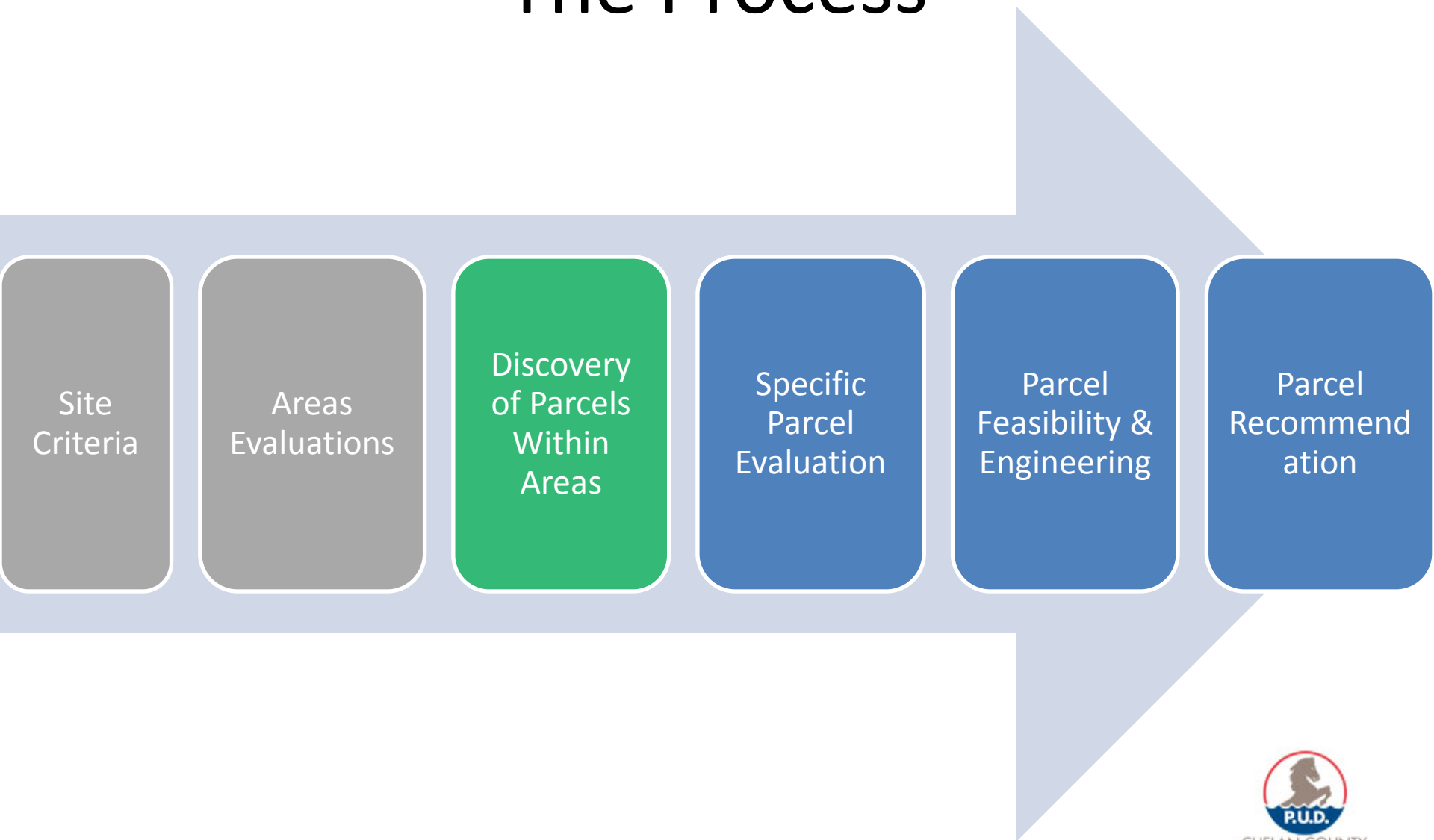
On August 24th, the PUD is coming back to the community to present three possible substation sites and discuss how we got to this point. We want to hear from the community about these sites before doing any detailed analysis. The goal is to present a recommendation to PUD Commissioners later this year.

Please join us. You can view information about the project at chelanpud.org/north-shore-chelan-substation.

If you can't make the August 24 meeting, there will be updates on the website and you can always contact us with your input or questions.

Questions? Contact teka.parks@chelanpud.org

The Process



Site
Criteria

Areas
Evaluations

Discovery
of Parcels
Within
Areas

Specific
Parcel
Evaluation

Parcel
Feasibility &
Engineering

Parcel
Recommendation

North Shore Chelan Substation

1 in = 0.13 miles

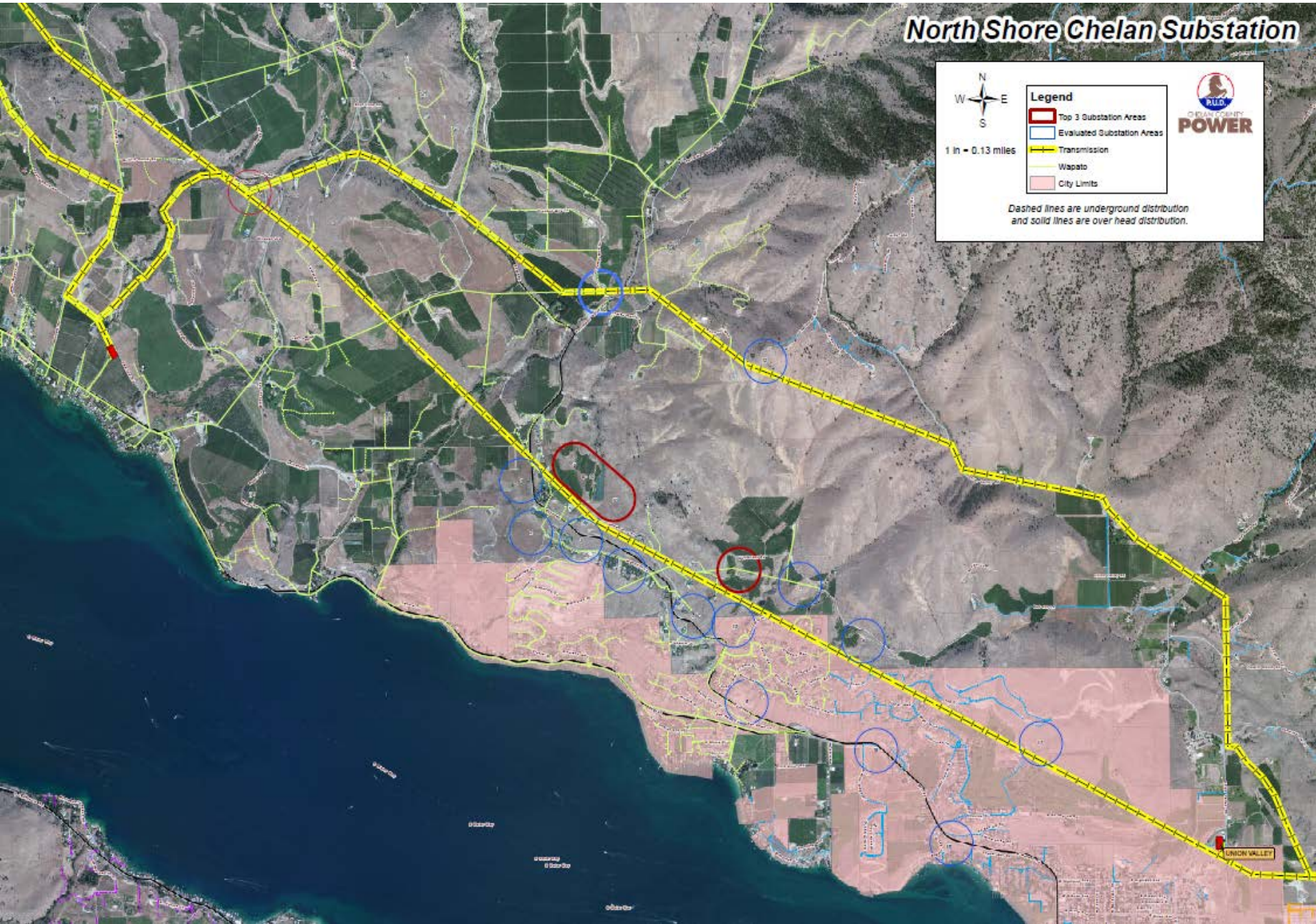
W N E S

Legend

- Top 3 Substation Areas
- Evaluated Substation Areas
- Transmission
- Wapato
- City Limits

R.P.U.D.
CHelan COUNTY
POWER

Dashed lines are underground distribution and solid lines are over head distribution.



Questions?