

**PUBLIC UTILITY DISTRICT NO. 1 *of* CHELAN COUNTY**

P.O. Box 1231, Wenatchee, WA 98807-1231 • 327 N. Wenatchee Ave., Wenatchee, WA 98801  
(509) 663-8121 • Toll free 1-888-663-8121 • [www.chelanpud.org](http://www.chelanpud.org)

July 31, 2017

Ms. Kimberly D. Bose, Secretary  
Attention: OEP/DHAC  
FEDERAL ENERGY REGULATORY COMMISSION  
888 First Street, NE  
Washington, DC 20426

**VIA ELECTRONIC FILING**

Re: **Rocky Reach Hydroelectric Project No. 2145  
Lincoln Rock As-Built Site Drawing, and  
Revised Rocky Reach Overall Site Plan Drawing of Recreation Facilities**

Dear Secretary Bose:

On September 23, 2016, the Federal Energy Regulatory Commission (Commission) issued its letter order requiring the Public Utility District No. 1 of Chelan County, Washington (Chelan PUD) to file the recreation site plan drawings for Commission approval.

In accordance with the requirements of the letter order, Chelan PUD hereby files the above-mentioned recreation drawings in electronic format. Two hard copies of this letter along with the drawings will be sent concurrently to Mr. Douglas Johnson, Regional Engineer, of FERC's Division of Dam Safety and Inspections Portland Regional Office.

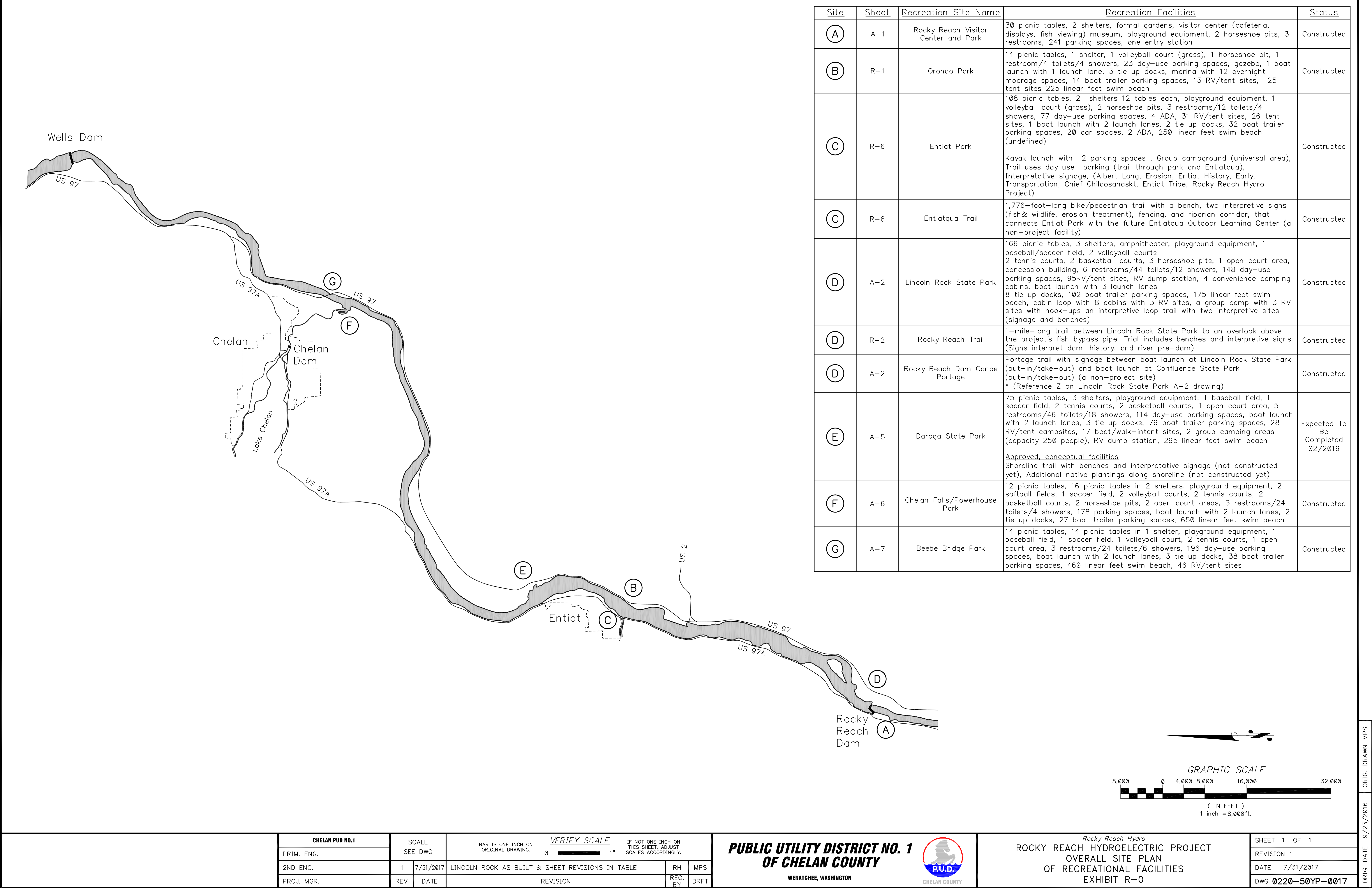
If you have any questions or need further information, please do not hesitate to contact me or Ryan Baker at 509-661-4495.

Regards,

Jeffrey G. Osborn  
License Compliance Supervisor  
[jeff.osborn@chelanpud.org](mailto:jeff.osborn@chelanpud.org)  
(509) 661-4176

Attachments: Lincoln Rock As-Built Site Drawing  
Revised Rocky Reach Overall Site Plan Drawing

c: Douglas Johnson, FERC Portland Office (two hard copies)



Site	Sheet	Recreation Site Name	Recreation Facilities	Status
(A)	A-1	Rocky Reach Visitor Center and Park	30 picnic tables, 2 shelters, formal gardens, visitor center (cafeteria, displays, fish viewing) museum, playground equipment, 2 horseshoe pits, 3 restrooms, 241 parking spaces, one entry station	Constructed
(B)	R-1	Orondo Park	14 picnic tables, 1 shelter, 1 volleyball court (grass), 1 horseshoe pit, 1 restroom/4 toilets/4 showers, 23 day-use parking spaces, gazebo, 1 boat launch with 1 launch lane, 3 tie up docks, marina with 12 overnight moorage spaces, 14 boat trailer parking spaces, 13 RV/tent sites, 25 tent sites 225 linear feet swim beach	Constructed
(C)	R-6	Entiat Park	108 picnic tables, 2 shelters 12 tables each, playground equipment, 1 volleyball court (grass), 2 horseshoe pits, 3 restrooms/12 toilets/4 showers, 77 day-use parking spaces, 4 ADA, 31 RV/tent sites, 26 tent sites, 1 boat launch with 2 launch lanes, 2 tie up docks, 32 boat trailer parking spaces, 20 car spaces, 2 ADA, 250 linear feet swim beach (undefined)  Kayak launch with 2 parking spaces , Group campground (universal area), Trail uses day use parking (trail through park and Entiatqua), Interpretative signage, (Albert Long, Erosion, Entiat History, Early, Transportation, Chief Chilcosahaski, Entiat Tribe, Rocky Reach Hydro Project)	Constructed
(C)	R-6	Entiatqua Trail	1,776-foot-long bike/pedestrian trail with a bench, two interpretive signs (fish& wildlife, erosion treatment), fencing, and riparian corridor, that connects Entiat Park with the future Entiatqua Outdoor Learning Center (a non-project facility)	Constructed
(D)	A-2	Lincoln Rock State Park	166 picnic tables, 3 shelters, amphitheater, playground equipment, 1 baseball/soccer field, 2 volleyball courts 2 tennis courts, 2 basketball courts, 3 horseshoe pits, 1 open court area, concession building, 6 restrooms/44 toilets/12 showers, 148 day-use parking spaces, 95RV/tent sites, RV dump station, 4 convenience camping cabins, boat launch with 3 launch lanes 8 tie up docks, 102 boat trailer parking spaces, 175 linear feet swim beach, cabin loop with 8 cabins with 3 RV sites, a group camp with 3 RV sites with hook-ups an interpretive loop trail with two interpretive sites (signage and benches)	Constructed
(D)	R-2	Rocky Reach Trail	1-mile-long trail between Lincoln Rock State Park to an overlook above the project's fish bypass pipe. Trail includes benches and interpretive signs (Signs interpret dam, history, and river pre-dam)	Constructed
(D)	A-2	Rocky Reach Dam Canoe Portage	Portage trail with signage between boat launch at Lincoln Rock State Park (put-in/take-out) and boat launch at Confluence State Park (put-in/take-out) (a non-project site) * (Reference Z on Lincoln Rock State Park A-2 drawing)	Constructed
(E)	A-5	Daroga State Park	75 picnic tables, 3 shelters, playground equipment, 1 baseball field, 1 soccer field, 2 tennis courts, 2 basketball courts, 1 open court area, 5 restrooms/46 toilets/18 showers, 114 day-use parking spaces, boat launch with 2 launch lanes, 3 tie up docks, 76 boat trailer parking spaces, 28 RV/tent campsites, 17 boat/walk-intent sites, 2 group camping areas (capacity 250 people), RV dump station, 295 linear feet swim beach  <u>Approved, conceptual facilities</u> Shoreline trail with benches and interpretative signage (not constructed yet), Additional native plantings along shoreline (not constructed yet)	Expected To Be Completed 02/2019
(F)	A-6	Chelan Falls/Powerhouse Park	12 picnic tables, 16 picnic tables in 2 shelters, playground equipment, 2 softball fields, 1 soccer field, 2 volleyball courts, 2 tennis courts, 2 basketball courts, 2 horseshoe pits, 2 open court areas, 3 restrooms/24 toilets/4 showers, 178 parking spaces, boat launch with 2 launch lanes, 2 tie up docks, 27 boat trailer parking spaces, 650 linear feet swim beach	Constructed
(G)	A-7	Beebe Bridge Park	14 picnic tables, 14 picnic tables in 1 shelter, playground equipment, 1 baseball field, 1 soccer field, 1 volleyball court, 2 tennis courts, 1 open court area, 3 restrooms/24 toilets/6 showers, 196 day-use parking spaces, boat launch with 2 launch lanes, 3 tie up docks, 38 boat trailer parking spaces, 460 linear feet swim beach, 46 RV/tent sites	Constructed

CHELAN PUD NO.1

PRIM. ENG.

2ND ENG.

PROJ. MGR.

SCALE

SEE DWG

1

7/31/2017

REV

DATE

BAR IS ONE INCH ON ORIGINAL DRAWING.

VERIFY SCALE

0 1"

LINCOLN ROCK AS BUILT & SHEET REVISIONS IN TABLE

REVISION

IF NOT ONE INCH ON THIS SHEET, ADJUST SCALES ACCORDINGLY.

RH

MPS

REQ. BY

DRFT

**PUBLIC UTILITY DISTRICT NO. 1**

**OF CHELAN COUNTY**

WENATCHEE, WASHINGTON

Rocky Reach Hydro

**ROCKY REACH HYDROELECTRIC PROJECT**

**OVERALL SITE PLAN**

**OF RECREATIONAL FACILITIES**

**EXHIBIT R-0**

SHEET 1 OF 1

REVISION 1

DATE 7/31/2017

DWG. 0220-50YP-0017

DOCUMENT CLASS:

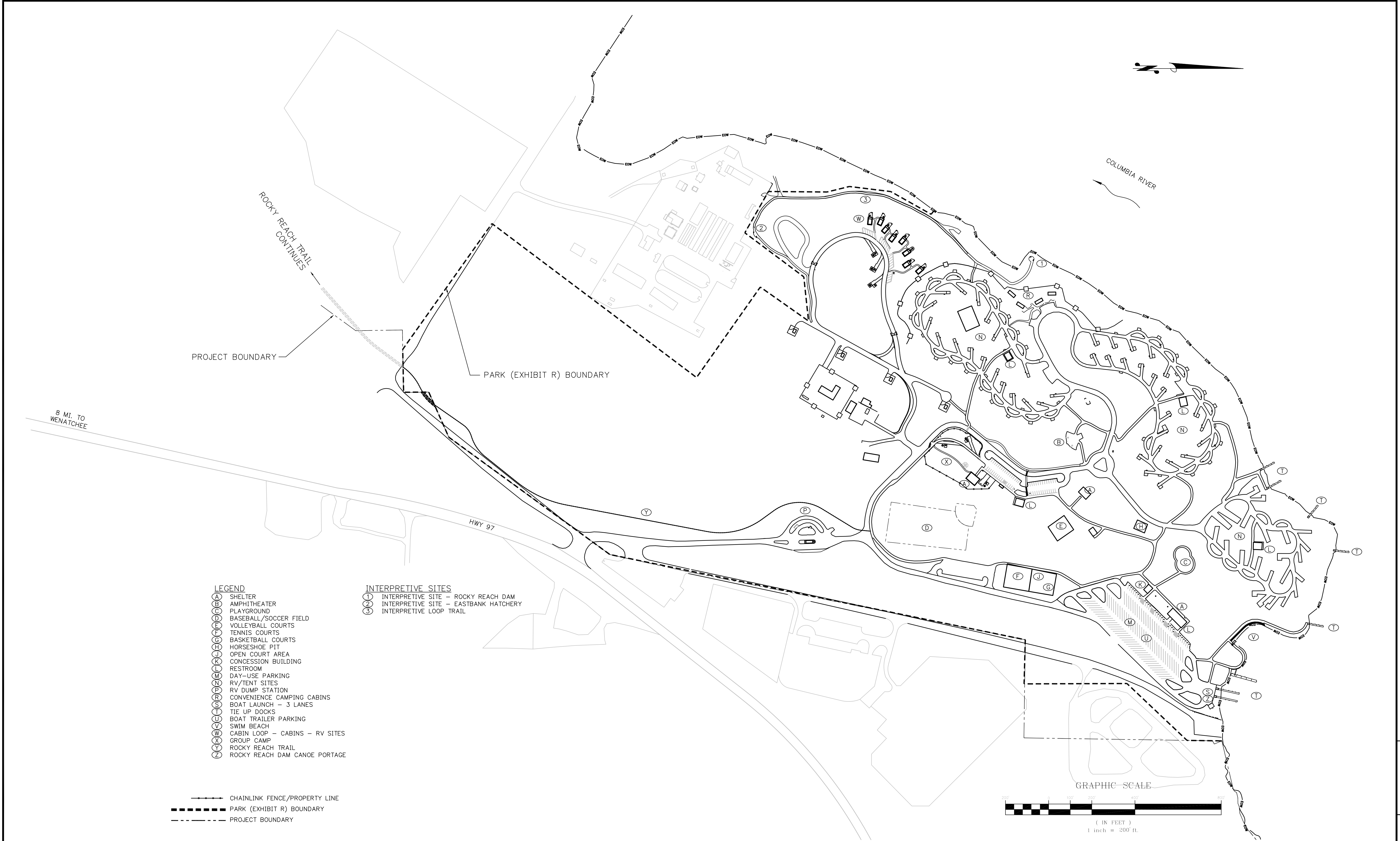
ID:

FERC DWG. #: P-2145-EXH\_R0

ORIG. DATE 9/25/2016

ORIG. DRAWN MPS





CHELAN PUD NO.1		SCALE		BAR IS ONE INCH ON ORIGINAL DRAWING.		VERIFY SCALE		IF NOT ONE INCH ON THIS SHEET, ADJUST SCALES ACCORDINGLY.		PUBLIC UTILITY DISTRICT NO. 1 OF CHELAN COUNTY		Lincoln Rock State Park LAYOUT AND FACILITIES PLAN		SHEET 1 OF 1	
PRIM. ENG.		SEE DWG		0	1"					REB	MPS			REVISION 0	
2ND ENG.		0	7/31/2017	ADDED CABIN LOOP AND TRAIL						REQ.	DRFT			DATE 7/31/2017	
PROJ. MGR.		REV	DATE	REVISION										DWG. 0913-50LY-0010	