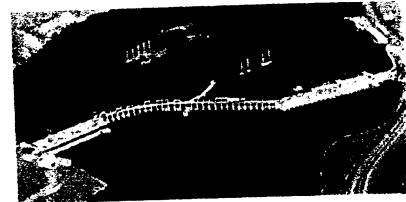
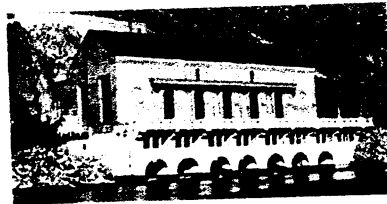


ORIGINAL



PUBLIC UTILITY DISTRICT NO. 1 of CHELAN COUNTY

P.O. Box 1231, Wenatchee, WA 98807-1231 • 327 N. Wenatchee Ave., Wenatchee, WA 98801
(509) 663-8121 • Toll free 1-888-663-8121 • www.chelanpubd.org

FILED
OFFICE OF THE
CLERK OF THE
COURT
NOV 30 P 1:28

PUBLIC

November 30, 2007

P-637-WA NATDAM-WA00004

Mr. Patrick Regan, P.E., Regional Engineer
Portland Regional Office
Federal Energy Regulatory Commission
805 SW Broadway, Suite 550
Portland, OR 97205

**CONTAINS CEII-
DESIGNATED MATERIALS**

Dear Mr. Regan:

To meet the requirements of Article 408, Appendix A, Article 7(b)1, 2 and 3 and Appendix D of the new license order¹ for the Lake Chelan Project, Chelan County Public Utility District (District) is preparing for construction of the Chelan River Project. The Chelan River Project comprises the low level outlet, the Chelan tailrace pump station with conveyance canal and outlet, the reach 4 habitat channel and modifications to the powerhouse tailrace channel to provide additional spawning habitat.

The District is submitting, with this letter, an original and two copies each of the items listed below. Additionally, in accordance with license Articles 303 and 305 and Appendix E, two copies will be filed with the Federal Energy Regulatory Commission's Washington D.C. office by copy of this letter. One of those copies will be a courtesy copy to the Director, Division of Dam Safety & Inspections.

- Design drawings and specifications to be used for the proposed construction. These documents are not final at this time, but are nearly complete.
- Temporary Erosion and Sediment Control Plan (TESCP). The final plan will be prepared by the Contractor and reviewed by the District for compliance with applicable regulations and permits, however, it will incorporate the elements of the enclosed plan.
- Quality Control Inspection Plan (QCIP)
- Temporary Construction Emergency Action Plan (TCEAP)
- Supporting Design Reports (SDR). Each of the three consultants involved has prepared an SDR. These have been combined to cover all parts of the project.

Our intent is to meet the schedule requirements in the license order to the best of our ability. For this reason, we are submitting the design documents at this time. We greatly appreciate your willingness to begin review with the drawings and specifications in a not-quite-final condition. We would appreciate it if you could respond with any comments as

¹ 117 FERC ¶62,129

soon as practicable, as it would be helpful in our efforts to maintain the overall project schedule.

The design drawings and specifications, and the TCEAP, meet the CEM requirements under 18 CFR 388.113c. The District requests the Commission to not release this information to the public.

If you would like to discuss this work or if additional information would be helpful, please call me at the number listed below, or call Michelle Smith, Licensing & Compliance Manager, at (509) 661-4180.

Sincerely,
Engineering Services



M. Gene Yow, P.E.
Dam Safety Manager
(509) 661-4305
gene.yow@chelanpud.org

Enclosures: **Original and two copies (CEI-Designated Material)**

cc: **Honorable Kimberly D. Bose, Commission (two copies, with one copy as a courtesy copy to the Director of Division of Dam Safety & Inspections)**